

Worcestershire

ISSUE 449 JUNE 2024

What's On

FILM | COMEDY | THEATRE | GIGS | VISUAL ARTS | EVENTS

worcestershirewhatson.co.uk



NEC PRESENTS THE OFFICIAL

Follow us on
f
t
i

CIRCUS VEGAS

FROM THE PRODUCERS OF
CIRCUS EXTREME

It's like Vegas on Wheels!

**FOR GREAT DISCOUNTS CALL
07494 774 008 OR 07494 774 009**

and quote promo code **ACROBAT**

Must book 24hours in advance. Offer not valid with any other discount or against tickets already purchased.

**WORCESTER
SIXWAYS STADIUM
WED 26 TO SUN 30 JUNE**

BIG TOP BOX OFFICE 07494 774 008 or 07494 774 009

Ticket Sales & Information www.circusvegasuk.com

BOOK NOW! ONLINE ticketmaster www.ticketmaster.co.uk

inside:

HAMILTON

blockbuster musical arrives in the Midlands for a summer run



CHARM OF FINCHES

Aussie sisters bring bewitching folk pop to The Fleece Inn



CULINARY DELIGHTS

BBC Good Food Show Summer returns to the NEC





Birmingham
Museums

VICTORIAN



Showing
until
31 Oct

RADICALS

From the Pre-Raphaelites to the Arts and Crafts Movement
Gas Hall, Birmingham Museum & Art Gallery

birminghammuseums.org.uk



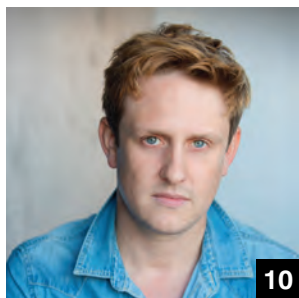
Birmingham
City Council



Supported using public funding by
**ARTS COUNCIL
ENGLAND**



08



10



14



17



19



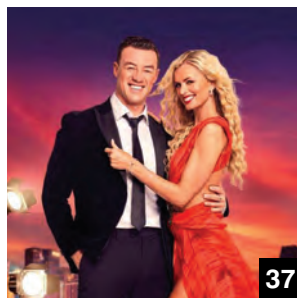
21



22



31



37



39



43



49

INSIDE:

First Word

4

Gigs

17

Festivals

19

Comedy

21

Theatre

24

Dance

37

Film

38

Visual Arts

43

Events

45

Follow us at:



whatsonwarwickshire
whatsonworcestershire



@whatsonwarwicks
@whatsonworcs



@whatsonwarwicks
@whatsonworcs

What's On

MEDIA GROUP

Jessica Clixby jessica@whatsonlive.co.uk Subscriptions: subscriptions@whatsonlive.co.uk 01743 281714
Contributors: Graham Bostock, Diane Parkes, Patsy Moss, Steve Adams, Sue Hull, Reggie White, Sue Jones, Liz Day, Carol Lovatt
Publisher and CEO: **Martin Monahan** Accounts Administrator: **Julia Perry** julia@21stcd.com 01743 281717

This publication is printed on paper from a sustainable source and is produced without the use of elemental chlorine. We endorse the recycling of our magazine and would encourage you to pass it on to others to read when you have finished with it.

All works appearing in this publication are copyright. It is to be assumed that the copyright for material rests with the magazine unless otherwise stated. No part of this publication may be reproduced, or stored in an electronic system, transmitted in any form or by any means, electronic, mechanical, photocopied, recording or otherwise, without the prior knowledge and consent of the publishers.





Bright lights of Vegas at Sixways Stadium

A circus which merges Las Vegas traditions and contemporary styles with extreme stunts and classic clown escapades is visiting the Midlands this month.

Circus Vegas finishes its run at Birmingham's NEC on Sunday 2 June. It then visits Worcester's Sixways Stadium from Wednesday the 26th to Sunday the 30th. Further information about the show is available at circusvegasuk.com

Pelvic thrust in Malvern!

Hook up your fishnets, tighten your corsets and prepare to 'do The Time Warp again' - The Rocky Horror Show is returning to the Midlands! Richard O'Brien's cult classic will visit Malvern Theatres in the autumn, stopping off at the venue from Monday 7 to Saturday 12 October.

For more information and to book tickets, visit malvern-theatres.co.uk



Olivier-nominated show to visit the Belgrade Theatre

An Olivier Award-nominated show, celebrating 'the joy and chaos of raising a queer child', will stop off at Coventry's Belgrade Theatre next month as part of a UK tour. Written & performed by 'social-media sensation' Rob Madge, My Son's A Queer, (But What Can You Do?) shows at the venue from Monday 15 to Wednesday 17 July.

For more information about the show and to purchase tickets, visit belgrade.co.uk



Theatre beneath the stars in Solihull's Brueton Park

Solihull theatre The Core is presenting four family-friendly outdoor productions at nearby Brueton Park in August. Beginning with Gilbert & Sullivan's The Gondoliers on Thursday the 1st, the programme of entertainment also features Angelica Sprocket's Pockets - 'a perfect treat for the whole family' - on Saturday the 10th, Oddsocks' fun-filled version of Julius Caesar on Tuesday the 13th and a production of The Importance Of Being Earnest on Thursday the 22nd. To find out more and book tickets, visit thecoretheatresolihull.co.uk

New Michael Jackson celebration in Coventry

A new event celebrating the music of Michael Jackson will visit Coventry early next year as part of a UK-wide tour.

Man In The Mirror will see CJ, 'one of the world's leading Michael Jackson tribute artists', take to the stage at Coventry Building Society Arena on Saturday 11 January. More information and tickets are available at coventrybuildingsocietyarena.co.uk



British Motor Museum to host STEM Careers days

The British Motor Museum in Gaydon, Warwickshire, is hosting four STEM Careers days over the course of the next few weeks. Taking place on Wednesday 26 & Thursday 27 June, and then on Thursday 11 & Friday 12 July, the special events will feature a range of interactive STEM-based activities for secondary school pupils in years seven to 10. For more information about the events, visit britishmotormuseum.co.uk

Turning Japanese at Brum's Symphony Hall

Birmingham's Symphony Hall is set to play host to a Japanese orchestra for the first time in more than 25 years.

The Yomiuri Nippon Symphony Orchestra of Tokyo will perform at the venue (Wednesday 23 October) as part of the 2024/25 classical music season, presenting a concert that will include performances of Beethoven's Violin Concerto and Rachmaninov's Second Symphony. Sebastian Weigle conducts while Christian Tetzlaff (pictured) plays violin. To check out Symphony Hall's complete programme of concerts, visit the website bmusic.co.uk/bclassical



AJ & Curtis set to star in Moulin Rouge tribute

A show paying tribute to hit musical Moulin Rouge will visit the region in the autumn as part of a UK tour.

Come What May, starring AJ and Curtis Pritchard, stops off at Coventry's Warwick Arts Centre on Thursday 10 October.

To find out more and book tickets for the show, visit cuffeandtaylor.com



Harry on tour...

Harry Hill is heading out on tour early next year and will be stopping off at a number of Midlands venues.

Harry's latest show, *New Bits & Greatest Hits*, sees the big-collared comedian 'offering new insights into the hot topics of the day, including the demise of the SCART lead, the 'culture wars', the differences between crabsticks and rhubarb, and the origins of Tiramisu'.

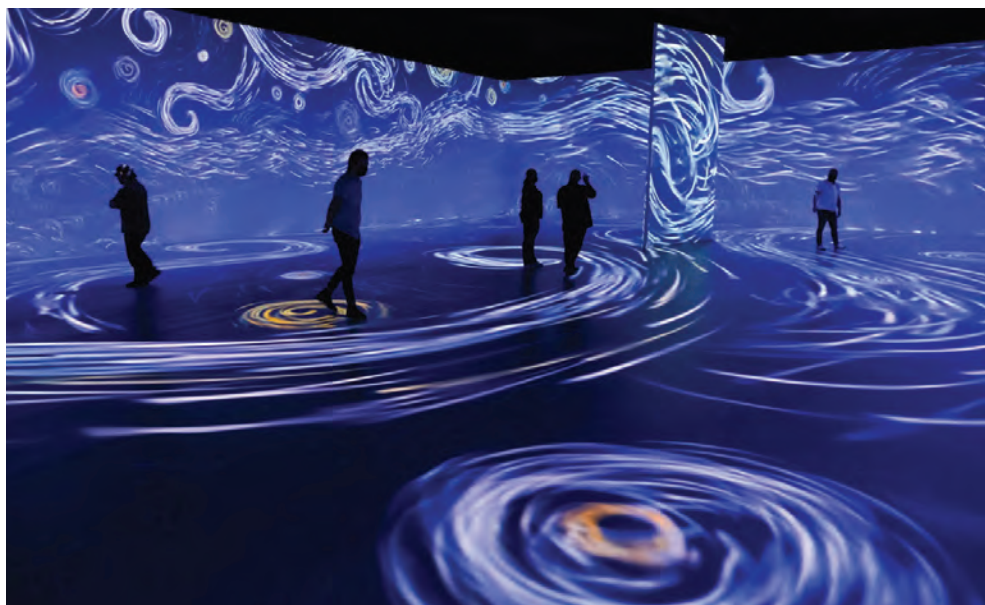
To find out where and when Harry is appearing in the region, visit harryhill.co.uk



Midlands date for Janet Jackson

Five-time Grammy Award winner Janet Jackson is bringing her *Together Again* tour to Birmingham in the autumn.

The show - which celebrates Janet's 50 years in the music business and the 35th anniversary of her critically acclaimed album, *Rhythm Nation* - stops off at Utilita Arena on Friday 27 September. To book a seat, visit the website theticketfactory.com



Van Gogh touring exhibition stopping off at the NEC

A multimedia touring show celebrating Vincent van Gogh's life and work is visiting Birmingham this summer.

Beyond Van Gogh: The Immersive Experience will show at the NEC from Thursday 1 August to Sunday 1 September. Combining more than 300

of the artist's paintings with cutting-edge technology and a specially curated soundtrack, the 'stunning sensory extravaganza' has so far been viewed by more than five million people across the world... To find out more about the show, visit the website thenec.co.uk

Licensees to host two-day family festival

Licensees Nick and Emma Woodhouse are hosting a two-day festival at the end of the month to celebrate a decade in charge of their pub, Fleur de Lys, in the Warwickshire village of Lowsonford.

Taking place on Saturday 29 & Sunday 30 June, Fleur Fest will feature a host of entertainment and activities throughout the weekend, from live musicians and performers - including stilt walkers and bubbleologists - to craft and circus-skills workshops, market and charity stalls, and a dog show with prizes. To find out more about Fleur Fest, visit the website eventbrite.co.uk



Gladiator Giant to star in Beauty And The Beast at Wolverhampton Grand

Gladiators star Giant has joined the cast of this year's Wolverhampton Grand Theatre pantomime production of *Beauty And The Beast*. The Midlands-born 6ft 5inch star of the hit BBC television series will take on a 'villainous new role' in the family-friendly panto, which runs at the venue from Saturday 30 November to Sunday 5 January. For further information and to purchase tickets, visit grandtheatre.co.uk

Open-weekend event at water-powered corn mill

A family day out with a difference is on offer at Shelsley water mill this month, courtesy of a special 'open weekend' event. Shelsley is the home of Worcestershire's only functioning water-powered corn mill. It can be visited free of charge on Saturday 8 & Sunday 9 June. A display of classic vehicles and a steam traction engine from a bygone era will also be available to view.

Food glorious food as popular festival returns...

The ever-popular Three Counties Food & Drink Festival returns late next month. Taking place at Malvern's Three Counties Showground on Saturday 27 & Sunday 28 July, the show will feature 160-plus local traders, live music, a dedicated crafts marquee, a kids' cookery school and a 500-seat cookery theatre with award-winning TV chefs giving daily demonstrations. For more information about the event, visit threecountiesfoodfestival.com

BRB take over BMAG's Waterhall

If you've ever fancied finding out more about the operations of one of the country's most acclaimed ballet companies, then now's your chance.

Birmingham Royal Ballet (BRB) has announced a short residency at Birmingham Museum & Art Gallery's (BMAG) Waterhall Gallery (Wednesday 26 June - Tuesday 2 July), during which various aspects of life in a ballet company - both on and off stage - will be showcased.

An exhibition, demonstrations, the chance to watch and join in dance classes, and an introduction to making your very own tutu, all feature.

A special Night At The Museum event is also planned, offering visitors the chance to enjoy both BMAG's Victorian Radicals exhibition and a series of short performances, including the world premiere of a new work by BRB dancer Olivia Chang Clarke. For further information and to book tickets, visit brb.org.uk



Four summer concerts at Warwick Castle next month

Midlands music lovers will no doubt be heading to Warwick Castle in their droves next month, when the popular visitor attraction hosts a series of summer concerts. Kickstarting the programme of gigs on Thursday 18 July is the London Concert Orchestra, who will be performing the music of Hollywood composers Hans Zimmer and John Williams. The following night it's the turn of McFly, with special guests The

Hoosiers, to entertain the masses, before London Concert Orchestra return on Saturday the 20th to perform 'ultimate dance hits from the 90s'.

The castle's summer concert season is then rounded off on Sunday the 21st by Noel Gallagher's High Flying Birds, with special guests Johnny Marr and The WAEVE. For more information and to book tickets, visit premier.ticketek.co.uk

Outdoor adventure with The Three Musketeers!

It will definitely be a case of 'all for one and one for all' at the Commandery Gardens in Worcestershire next month, when the highly rated Worcester Repertory Company present their brand-new version of Alexandre Dumas' swashbuckling adventure, The Three Musketeers.

The production shows at the venue from Wednesday 10 to Sunday 21 July... For further information, visit mpv.tickets.com

Core Theatre confirmed to reopen in spring 2025

Solihull Council will reopen the Core Theatre auditorium in spring next year. The council's aim is that, by April 2025, the auditorium will be hosting shows, performances and film screenings, with a full theatre programme in place from

September of next year. Check The Core Theatre website to keep up to date with all the latest performances and plans."

Midlands organisations receive Arts Council cash

Arts Council England has awarded a total of £3,238,499 to seven West Midlands cultural and creative organisations.

The money comes from the Government-funded Capital Investment Programme and will be used to improve accessibility, reduce environmental impact and support new business models.

The seven beneficiaries are the Birmingham-based ACE Dance & Music and Grosvenor Road Studios, Stourbridge Glass Museum, Stoke-on-Trent's Portland Inn Project, the New Vic Theatre in Newcastle-under-Lyme, Hereford Museum Service and the Royal Shakespeare Company in Stratford-upon-Avon.

B:Music

Town Hall & Symphony Hall



@bmusicltd



@bmusic_ltd



0121 7803333

Richard Thompson: Ship to Shore

03 June | Symphony Hall



Between The Covers: Live

04 June | Town Hall



Collabro: 10th Anniversary Reunion Concert

07 June | Symphony Hall



Fanna-Fi-Allah Sufi Qawwali

07 June | Town Hall



Britpop Classical

08 June | Symphony Hall



Bhangra Symphonica

08 June | Town Hall



Disney in Concert: The Sound of Magic

11 June | Symphony Hall



Shalamar: Greatest Hits

14 June | Symphony Hall



Nadiya & Kai: Behind The Magic

24 June | Symphony Hall



JUST ANNOUNCED

B:Classical 2024/25

Various Dates | Symphony Hall

Highlights Include: Nuremberg Symphony Orchestra
Hungarian Radio Symphony Orchestra | German
National Orchestra | Vasily Petrenko & The Royal
Philharmonic Orchestra & many more!

bmusic.co.uk

There's something for
everyone this June!

Get fundraising to help support Myton Hospice

Fundraisers are being urged to get their wheels in motion on behalf of Myton Hospice this summer by taking part in a 'cycle challenge' through the picturesque villages of Warwickshire and the Cotswolds (Sunday 4 August)...

If cycling's not your thing, then how about fundraising for the hospice via an autumn abseil down Coventry Cathedral instead (Saturday 28 September)?

To find out more about both challenges and how to get involved, visit the website at: mytonhospice.org

Picturing High Streets at the Transport Museum

Coventry Transport Museum continues to host Picturing High Streets, an installation of work featuring images of the city and its people taken by Coventry's photographer-in-residence, Tim Mills.

The installation is available to view at the venue until early November.

Dance company set to explore regeneration

Midlands-based Keneish Dance Company is visiting numerous local venues with a brand-new contemporary dance performance piece.

Taking the title *Balance*, the work is described as a production in which art meets science, 'featuring the delicate choreography of the human immune-system cells and cellular movement'.

The show is choreographed by the ensemble's artistic director, Keisha Grant, who said: "Creating this work has opened my understanding of human cells, their movement, behaviour, how they respond to environment, how they react, protect us and rejuvenate, resulting in the creation of this exciting new work, which will be incorporated into the company's wellbeing programming."

To find out where the company is appearing, and when, over the next few months, visit keneishdance.com



Midlands stop-off for Disney's Road Trip Adventures

Grab your mouse ears and get your skates on - Disney On Ice is heading back to Birmingham with a brand-new show!

Titled *Road Trip Adventures*, the production features new and classic tales, world-class

skating, high-flying acrobatics and up-close character interactions. The show stops off at Utilita Arena from Wednesday 30 October to Sunday 10 November. For more information and tickets, visit utilitaarenabham.co.uk

Best of the Blues coming to Solihull studio theatre

Although the main auditorium of Solihull theatre The Core is closed until 2025, the venue is making good use of its Studio space during the second half of this year, with its programme of shows including three Blues-music gigs.

Blues rocker Simon 'Honeyboy' Hickling and his band pay a visit this month (Friday 14 June), with PJ Baker's Blues Irregulars and Jimmy Regal & The Royals then stopping off at the venue in the autumn. To find out more about what's on in the Studio, visit thecoretheatresolihull.co.uk

Herbert summer show inspired by nature

Herbert Museum & Art Gallery's free-to-enjoy summer exhibition opens next month - complete with giant flowers, bursts of rainbow colours, and sounds and smells that awaken inner tranquillity!

Titled *Joy...Inspired By Nature*, the display will see acclaimed artists Nicola Richardson and Marianne Taviner create 'an eye-popping wonderland that playfully reconnects us to nature'.

The exhibition is available to view at the Coventry venue from Friday 19 July to Sunday 22 September.

For more information, visit theherbert.org

Cultural feast at Rugby's Festival On The Close

Rugby will once again be hosting its hugely popular Festival On The Close at the end of this month.

Taking place from Saturday 22 to Wednesday 26 June, the event features music, dance, comedy, drama and performance. Highlights include a live orchestra, DJ and vocalist performing Ibiza anthems, a performance of *Showstopper! The Improvised Musical*, and Manford's Comedy Club, featuring comedian Paul Sinha. Hip-hop dance crew Flawless also make a contribution. To check out the full line-up, visit thefestivalontheclose.co.uk

August 'after hours' event at Compton Verney

Warwickshire venue Compton Verney's next After Hours evening will be held on Friday 9 August.

Taking place from 6pm to 9pm, the event provides visitors with the chance to 'jump on outdoor inflatable structures with Ringworld, run away with the Flying Seagulls Circus to learn new skills, or laugh out loud in their children's comedy corner'. A silent disco, a chance to explore the venue's exhibitions at night, and music from the Electro Swing Project also feature. To check out the whole programme, visit comptonverney.org.uk

BELGRADE



Book now **belgrade.co.uk**

MERRY HAPPY RETURNS

Richard Goulding explains why he's delighted to be back in Stratford-upon-Avon this summer



Richard Goulding's acting career got off to a flying start almost 20 years ago when the Royal Shakespeare Company unexpectedly came calling. This month sees him returning to the RSC to play Frank Ford in *The Merry Wives Of Windsor*. And, as he explains to What's On, working for the Company is just as much of a treat now as it was all those years ago...

Plenty of actors have a story to tell about how they got their first big break in the profession. Richard Goulding - best known for playing Prince Harry in TV comedy *The Windsors* and this summer starring in the Royal Shakespeare Company's (RSC) new production of *The Merry Wives Of Windsor* - is no exception...

A trip to Stratford while he was at drama school ultimately led to him performing on the most iconic stage of all, working alongside two theatrical giants - but it required more than a few stars to be in alignment.

"Our class did a production of *The Tempest*," he recalls, "touring local schools and doing workshops, the reward for which was doing a performance in the Swan Theatre.

"After that show, I saw a poster outside the theatre for new productions of *King Lear* and *The Seagull*, directed by Trevor Nunn and starring Sir Ian McKellen, starting in Stratford and then touring and going to the West End. I just thought that was the stuff of dreams; wouldn't it be amazing to be in that. And by some weird confluence of the stars, I ended up being in it six months later."

For 'confluence' you could just as easily read 'coincidence', as Richard thinks those school workshops played as big a part as his acting ability in attracting the attention of Sam Jones, the RSC's head of casting at the time.

"I don't know if this is true, but this is what I think," he says, almost conspiratorially.

"They were struggling to find someone to play Constantine in *The Seagull* and Edgar in *King Lear*, so they turned to drama schools and Trevor said to Sam 'Find me a graduate.'"

He thinks this probably made her think of the workshops - and one particular incident - rather than the Swan performance he'd given the previous year.

"Before I went to drama school, I'd been a schoolteacher, so I had some experience of dealing with unruly kids. We were struggling to get the attention of one particular group of children, so I used some of my teaching experience to wrest some attention from them. Sam had been at that workshop, and I think it must have stuck in her mind, because I'm sure it wasn't anything to do with my acting!"

The rest is now history - although Richard

admits that despite such an extraordinary start, his career hasn't panned out quite the way he intended.

"When I left drama school, my ambitions were to be at the RSC or the National, doing Shakespeare and classical plays, so it's been a complete surprise to me that I've ended up doing so much television and comedy."

His TV and film credits include a number of period (*Grantchester*, *Traitors*, *Belgravia*, *The Crown*) and factual (*A Very British Scandal*, *Scoop*) dramas, as well as comedies (*The Windsors*, *Fresh Meat*, *Wicked Little Letters*). And he regularly finds himself portraying real people - especially one particular member of the Royal Family. He played Prince Harry in three series of *The Windsors* as well as the hugely successful play, *King Charles III*, which went on to spawn a movie and BBC radio play.

"Prince Harry became part of my life in quite a big way for a long time, and while I'd never want to get away from it or deny it, it is a concern that one might become synonymous with that [character] to such an extent that it's the only thing that people see you as.

"I seem to have got a bit boxed into this 'posh idiot' kind of bracket - oddly I've found a kind of talent for it in some ways!

"Thankfully some of the roles I've done recently have been nothing like that, which I'm pleased about - you want to be versatile and test yourself in other waters."

It's one of the reasons he's delighted to be in *Merry Wives*, which he suggests is "in some ways a continuation of things I've done in the past, but also a break into something a bit new for me. My character is not an idiot, and he's very rich but not particularly posh."

Director Blanche McIntyre claims the play is one of Shakespeare's most underrated works, suggesting that its farcical set pieces paved the way for the classic sitcom. It's something she aims to reinforce by setting the latest production in a contemporary small town where gossip, suburban values and town politics are the order of the day.

Richard got onboard with the contemporary setting immediately.

"I think *Merry Wives* has a reputation for being a bit second rate among Shakespeare's plays because it's written in prose, is very middle class, provincial and the only comedy he wrote that's set in England. But it's real

life, so I think it's a very good idea to set it in a contemporary world.

"As someone who didn't really know [the play], I've been completely blown away by how brilliant it is. There are so many story threads and a very complicated plot, but if you get it right and make it clear, it's wonderfully human, funny and moving at the same time, like all Shakespeare's plays."

The comedy is set in Windsor ("which in our production might look a bit like Stratford"), where the townsfolk, including the titular wives (played by Samantha Spiro and Siubhan Harrison) are going about their normal lives until Falstaff (John Hodgkinson) arrives "and makes complete chaos of everything", according to Richard.

"Blanche says it very well - he's 'the lord of misrule'. On the one hand you're invited to judge Falstaff because of his disreputable, mischievous behaviour - with motives that you'd frown upon from a moralistic standpoint - but the play brilliantly, as so many of Shakespeare's comedies do, points out that misrule is where real life lives.

"My character in particular, Master Ford, lives this very tightly controlled, rules-based moralistic life, but that is turned inside out, and by the end he sees something like the truth about what it's really like to live as a human being. If Falstaff hadn't landed in Windsor, he wouldn't have had that great revelation and lived the life he eventually had."

This nicely mirrors Richard's own life-changing moment back in 2006. He knows how lucky he was to be spotted in that classroom - if that's really what happened, of course - and seems genuinely delighted to be making another appearance on the RSC stage, having also appeared in *A Mad World My Masters*, *Titus Andronicus* and *Candide* in 2013.

"The RSC has become a nice little staging post in my life and holds a great, lovely place in my heart," he says. "It's really lovely to be back."

.....

The Merry Wives Of Windsor shows at the Royal Shakespeare Theatre, Stratford-upon-Avon, from Wednesday 5 June to Saturday 7 September

ARMONICO CONSORT

'PURE PLEASURE' THE GUARDIAN
★★★★★ THE INDEPENDENT
★★★★★ BBC MUSIC MAGAZINE
★★★★★ THE TIMES
★★★★★ THE TELEGRAPH

Tickets: www.armonico.org.uk

Registered Charity no. 1103159



The Fairy Queen - Henry Purcell

ARMONICO CONSORT & BAROQUE PLAYERS
DIRECTOR | CHRISTOPHER MONKS
NARRATORS | OZ CLARKE & LAURA MORETTO
SOPRANO | ELOISE IRVING & HANNAH FRASER-MACKENZIE
ALTO | WILLIAM TOWERS
TENOR | TBC
BASS | ROBERT DAVIES

For 15 years, Armonico Consort has been in demand by festivals in the UK and Europe to perform its inimitable version of Purcell's *Dido & Aeneas*. The singers and actors of the company now turn their attention to Purcell's greatest semi-opera in a brand new semi-staged version with a specially adapted script from Shakespeare's *'Midsummer Night's Dream'* to create for the first time a modern-day retelling of both of these incredible works in one joyous evening!

27th June 2024 7.30pm, Royal Pump Rooms, Leamington Spa

Tickets from £23.50. 01926 334418 armonico.org.uk

This performance is generously supported by Hilary Eldridge, member of the Conductor's Circle.

29th June 2024 7.30pm, Malvern Theatres, Worcestershire

Tickets from £29.12. 01684 892277 armonico.org.uk

EX CATHEDRA

JEFFREY SKIDMORE ARTISTIC DIRECTOR



SUMMER MUSIC BY CANDLELIGHT

12-25 JUNE 2024

Unwind with an evening
of enchanting music
by candlelight.

Hereford Cathedral

St Peter's Church,
Wolverhampton

St Chad's Church,
Shrewsbury

St Paul's Church,
Birmingham

St Martin-in-the-Fields,
London

“a beautiful evening -
just magical”

Audience member



Book now at
www.excathedra.co.uk



ARTS COUNCIL
ENGLAND



Birmingham
City Council

B:Music Town Hall

Bhangra Beats, Western Rock
and Classical Strings

BHANGRA SYMPHONICA

Saturday 8 June 2024, 7:30pm, Birmingham Town Hall

bhangrasymphonica.com

Box Office: bmusic.co.uk | 0121 780 3333

Hamblett's

Classical music from across the region...



Armonico Consort: The Fairy Queen

Royal Pump Rooms, Leamington Spa, Thurs 27 June; Malvern Theatres, Sat 29 June

Founded by organist & conductor Christopher Monks in 2001, Armonico are one of the largest organisations of their kind in the UK. Making excellent use of authentic period instruments, the baroque consort regularly perform with some of the best solo musicians in the world.

This latest concert sees them returning to the output of Henry Purcell, having previously

earned rave reviews for their inimitable version of his Dido & Aeneas. This time out, they're also turning their attention to his famous semi-opera, The Fairy Queen - a work based on Shakespeare's A Midsummer Night's Dream...

Armonico promise 'a modern-day retelling of both of these incredible works in one joyous evening!'

University of Warwick Symphony Orchestra & Chorus: Finale!

Warwick Arts Centre, Coventry, Sun 23 June

University of Warwick Symphony Orchestra & Chorus end the season with a concert which features not only orchestral music by Tchaikovsky and Vaughan Williams but also Haydn's Nelson Mass. One of the final six masses the composer wrote, the piece is widely considered to be a culmination of the best of his liturgical work.



Birmingham Bach Choir

St Mary's Church, Warwick, Sat 29 June;
St Alban's Church, Conybere, Birmingham,
Sat 6 July

One of the city's oldest and most distinguished musical groups, Birmingham Bach Choir here presents a summer concert featuring four very different works. As well as David Bednall's The Dear Bargain, which was originally performed by the choir during its centenary, the programme also features Elgar's dramatic Give Unto The Lord and Leonard Bernstein's ever-popular Chichester Psalms. The final piece is Sound The Invisible Trumps, a work composed by the choir's conductor, Paul Spicer, in memory of much-loved chairperson Pauline Round.

Ex Cathedra: Summer Music By Candlelight

Hereford Cathedral, Wed 12 June; St Paul's Church, Birmingham, Tues 18 June

Jeffrey Skidmore once again picks up the baton to conduct Birmingham's highly rated early music ensemble, on this occasion in a concert that Ex Cathedra confidently predict will see people heading for home singing of summertime. The programmes for these annual get-togethers, presented by candlelight as dusk falls, move seamlessly from seasonal favourites to popular gems and accessible new music.



Coventry Cathedral Chorus: Festal Choral Evensong

Coventry Cathedral, Sat 22 June

Fresh from celebrating their 60th anniversary, Coventry Cathedral Chorus make a welcome return with a concert that includes performances of Charles Wood's Hail Gladdening Light, Matthew Martin's Responses, Hubert Parrys Blest Pair Of Sirens and Edward Elgar's Te Deum. Three works by Charles Villiers Stanford - Psalm 150, Magnificat and Nunc Dimittis in A - also feature.

City of Birmingham Choir

Tewkesbury Abbey, Sat 15 June

An evening of moving and inspiring 20th-century French choral and organ music is in prospect when the City of Birmingham Choir make a welcome return to Tewkesbury Abbey this month. With Adrian Lucas once again taking on the conducting duties, the choir has teamed up for the concert with Midlands-born organist David Briggs. As well as accompanying the choral pieces, David will also be playing two contrasting solos on the Abbey's historic Milton organ.



A WHOLE LOTTA LOVE

Irresistible beats. Musical fusion. Bhangra Symphonica is set to excite and inspire Birmingham audiences this month...



This month's Birmingham Town Hall concert by Bhangra Symphonica - an integration of bhangra-rock fusion band Kissmet and classical music masters Orchestra of the Swan - promises to be a big, bold and beautiful experience. What's On spoke to Ron & Buzz Singh of Kissmet, alongside Orchestra of the Swan's artistic director, David Le Page, to get a flavour of the epic collaboration...

Bhangra Symphonica is the meeting of two genre-blending powerhouses. Orchestra of the Swan, headed up by Artistic Director David Le Page, aim to break down the starchy stigma around classical music, while Kissmet, started by brothers Ron and Buzz Singh, blends traditional bhangra with classic rock. In collaboration, they create a thrilling and mesmerising experience, and are bringing that irresistible energy to Birmingham this month.

The partnership began, however, in a much humbler setting, with David visiting Ron and Buzz in Peterborough, to test the waters together in a jam session.

"Dave got his violin and I had my harmonium, and they just sang to each other," Ron explains. "It was such a revelation playing with Dave, because he's an absolutely phenomenal musician.

"We knew that the sound was completely unique; I've never heard anything like it before - this whole fusion of different genres, different instruments, different languages and different cultures, all coming together. But they work so well!"

The first iteration of Bhangra Symphonica hit the stage in Coventry, followed by a show at Alcester's Ragley Hall, featuring a selection of classical musicians from Orchestra of the Swan, the remainder of Kissmet, and most importantly, an audience.

"Being a classical musician, you don't always get instant feedback from the audience," says David. "The concerts that we do with Bhangra Symphonica are akin to a religious experience in some ways. I know it's expected in any live performance, but especially at these gigs - the audience is as important as the band."

"We try to make the audience another band member," adds Buzz, "so that everyone feels a part of the experience. Like Dave said, it feels religious - I think it also feels spiritual. We're all on that same journey; we're all looking to find peace, happiness and safety within ourselves."

Bhangra Symphonica's fusion reaches beyond the music into the groups' respective audiences. "It breaks down lots of barriers," says Buzz. "As Kissmet, who are singing in English, Punjabi, Hindi, playing rock music and playing bhangra, that was already quite unique in itself. Now, bringing the orchestra on with us as well - lots of our audiences have never heard violin live, or cello."

Kissmet's melting pot of influences stretches back to Buzz and Ron's childhood, and the street where they grew up in Peterborough. Ron explains: "Within half a mile there was the Pentecostal church, so on Sunday morning we were hearing gospel. Right next door to that was the mosque, and we would

hear the Friday evening call to prayers. You'd walk a bit further down the road and there was the Marcus Garvey Centre, playing Rastafarian reggae music. A bit further down, there was the Sikh temple, the Hindu Samaj, the Ukrainian club, the Roman Catholic church... As we were going to school, we heard all these different musical genres playing at the same time.

"As children, you don't realise that they're different; you just think of it as music - you don't even think that they're all singing in different languages."

The final piece of Kissmet's puzzle was the influence of rock music.

"We listened to Top Of The Pops and we'd hear Whole Lotta Love," says Ron. "Then, when we became musicians, I'd say to my guitarist 'Can you play the Top Of The Pops tune?' 'What, Whole Lotta Love?' I listened to it and I thought, that sounds Indian to me... so we'd start singing Punjabi lyrics over the top."

The band's new collaboration with Orchestra of the Swan has brought a further dimension to the sound experience, blending a classical influence into the mix.

Buzz paints a picture of Bhangra Symphonica's stage presence: "We're Sikhs with turbans and beards, and we've got English bass players, and we've got an orchestra behind us. It's amalgamating what we all are - we're all from one source. That's where the spiritual energy comes into it. People are listening to the sounds of each genre mixing together, and that's basically what we are as human beings."

Orchestra of the Swan, David attests, have just as much to gain from the collaboration: "It's enlightening on both sides completely. It broadens our horizons. It's an amazing body of music, the classical world, but sometimes its amazingness is a little bit like a museum piece - it reached the end of the 19th century and felt a bit stuck.

"One of the first things I did was get rid of the penguin suits and tails, all of that stuff, so it felt like there were human beings playing the music. At the heart of it, the music of Beethoven and Mozart is extraordinary, and it's emotional, and it really connects. What doesn't connect are some of those unhelpful rituals that are associated with the classical world, like clapping in a certain place..."

"No one told me about that one, Dave," interrupts Ron, "clapping in the wrong place!"

"I quite often say to the audience 'I don't mind where you clap,'" David continues. "I've tried to foster that approach in the classical world, but that's kind of slow progress. When we work with Bhangra Symphonica, it's amazing for the classical musicians to

suddenly feel such an extraordinarily strong and immediate reaction to what you're playing."

The practicalities of this collaboration needed to be considered as well. Buzz, as Kissmet's drummer, had to be flexible to balance the new instrumentation: "With the percussion side, you do have to adjust slightly because it's not like rock and bhangra: bam bam bam! Now we're putting a bit of class into our performance! So there's slight changes in volumes and beats, but that's what you have to do - you have to give everybody respect in their own instrument. We want everybody to be heard."

Bhangra Symphonica's combined influences, instruments and individuals creates something really special. The band perform at Birmingham Town Hall on the 8th of June - a venue David knows well, having frequently performed there with Orchestra of the Swan: "We haven't played there for a while now, but we used to play there several times a season. It's a very grand mid-19th century institution building, and it was refurbished about 15 years ago. It still has that Victorian feel to it, but it's a modern, airy space as well. It has a lot of different kinds of music - classical music, but lots of bands as well. It feels like it's the right setting for what we're doing - joining these two musics together."

With the venue fitting Bhangra Symphonica like a glove, there's one thing missing: the audience. The gig promises to be quite a spectacular experience - and according to Ron, the electricity in the room is essential: "As artists, it's so important for us to have that level of engagement with the people in front of us. Without them, we can't do anything. Dave, Buzz and I, we're not musicians who want to perform and have people listening to us - we want to perform and have people interacting with us, engaging, and going on the journey with us."

The group are driven by a wish to unite people's experiences, resonating all the way from the music, to the stage, to the audience. As Ron says: "The whole world is disintegrating into chaos, and we've got this little jewel of harmony, happiness, unity, diversity and multiculturalism - all the positive words you can put together. We need people to sit up and listen, because this is an opportunity to bring people together.

"Come with open ears, open minds, open hearts, and we will go on an incredible journey together."

.....

Bhangra Symphonica plays at Birmingham Town Hall on Saturday 8 June



OUTDOOR SUMMER MUSIC

Lively gigs coming up soon
from children's TV favourites to reggae legends

Simmer Down 2024 launch
Sat 6 Jul

YolanDa's Band Jam
Sun 28 Jul

Apache Indian 30th anniversary
Sat 3 Aug

mac
Midlands Arts Centre

Book now | macbirmingham.co.uk | 0121 446 3232
Midlands Arts Centre, Cannon Hill Park, Birmingham, B12 9QH





B:Music

Bat for Lashes

18 June | Town Hall
bmusic.co.uk | 0121 780 3333



3 BRIT Awards nominations | 3 Mercury Prize nominations | 2 Ivor Novello wins
Music & soundtrack writing for 'The Twilight Saga' & 'The Hunger Games'

B:Music
Town Hall & Symphony Hall

Live music from across the region...

Charm Of Finches

Temperance, Leamington Spa, Mon 10 June;
Kitchen Garden, Birmingham, Tues 11 June;
The Fleece Inn, Bretforton, Tues 18 June

Darkly bewitching folk pop, boasting seamless blood harmonies that 'traverse melancholy and wonder in equal measure', is the stock-in-trade of Melbourne sisters Mabel and Ivy Windred-Wornes. With a propensity for writing haunting tunes about emotive subjects such as love and grief, the Aussie duo visit the Midlands this month in support of their fourth studio album, *Marlinchen In The Snow* - a record inspired by the frozen beauty of rural Nova Scotia.



Drahla

The Tin Music & Arts, Coventry, Thurs 13 June

Skilled in the knack of bringing together post-punk and art-rock, Leeds-based three-piece Drahla make robust, bass-heavy and enticingly hook-laden music. They're also a band with a glowing reputation for the quality of their live performances - a fact which augurs well for 13th of June visitors to the Tin Music & Arts. The trio stop off at the venue in support of latest release *Angeltape*.



The Amy Winehouse Band

Warwick Arts Centre, Coventry, Thurs 20 June

Amy Winehouse's friend, long-term musical director & bass player Dale Davis here leads the late singer's original band in a 'joyful

and emotional' celebration of her songbook. Fronted by vocalist Bronte Shandé and coming complete with on-screen visuals and unique footage, the show is being promoted (and not without good reason) as 'the only completely authentic reimagining of the Amy Winehouse sound'.

Albert Lee

Huntingdon Hall, Worcester, Thurs 20 June

Grammy Award-winning guitarist Albert Lee has no shortage of celebrity admirers.

Included among them is Eric Clapton, who has hailed him 'the ultimate virtuoso', and Ralph McTell, who's called him a musical genius.

Then there's Emmylou Harris, who says of Albert's sound that it is 'often emulated, never equalled', and Jools Holland, whose admiration for the Herefordshire-born 80-year-old seemingly knows no bounds.

"Great musicians make you want to dance, make you cry and make you fall in love," says Jools, "and Albert does that with his playing."

Anta

Drummonds Bars, Worcester, Sun 2 June

Anta's live shows have been described as ceaseless onslaughts of deafening riffs - and the Bristolian sci-prog quartet are fully committed to making their gigs as energised as possible: "It comes down to those precious sweaty hours in which we get to vibrate these sounds into your face and chest, and you can dance and laugh with us. This is the stuff we remember and plan for,

the moments we talk about the most when writing songs."

Embrace

hmv Empire, Coventry, Sat 15 June

After building a following through their EP releases, Yorkshire rockers Embrace went straight to number one in the UK albums chart with their 1998 debut offering, *The Good Will Out*. They've since enjoyed a colourful career, bagging themselves further number one albums and even being chosen to record an official England World Cup song (2006's *World At Your Feet*).

The boys stop off in Coventry this month to perform a warm-up gig in preparation for a summer of festivals and an autumn tour.





Warwick FOLK FESTIVAL

25 - 28 July 2024

The Unthanks Oysterband

The Spooky Men's Chorale Breabach

Lady Maisery • John Tams • Melrose Quartet
Gnoss • Bonfire Radicals • Merry Hell
Will Pound • Ellie Gowers Trio
Blair Dunlop • The Wilderness Yet
Tarren • Lauren South • Old Spot
Keith Donnelly • Farefeld • Amit Dattani

Dance Brown Boots • Lasair **many more!**
Melrose Ceilidh Band • Steamchicken
The Relentless Ceilidh Band

Beautiful greenfield festival located in the medieval town of Warwick, a short walk from Warwick Castle.
Music • Dance • Comedy • Workshops • Sessions
Family Entertainment • Food • Real Ale Bar
Craft Village • Camping • Luxury Showers & Loos

The heart of Folk

Castle Park, Warwick, CV34 6AX
warwickfolkfestival.co.uk

Herbert

Art Gallery & Museum

HAYWARD GALLERY

TOURING

after the end of history

BRITISH WORKING CLASS PHOTOGRAPHY 1989 - 2024

29 March - 16 June 2024

FREE | Drop-in

HAGM is operated by:

Photo © Serena Brown, Clayponds, 2018, Courtesy the artist.



Festivals coming to the region in June...

Nocturne Live

Blenheim Palace, Oxfordshire,
Thurs 13 - Sun 16 June

Nocturne Live is a series of concerts which sees a fantastic line-up of artists performing against the spectacular backdrop of Blenheim Palace's Great Court.

Why not make the most of your visit and spend the day at the stunning venue before the concert begins? With an Annual Pass, you can enjoy everything that the palace, park & gardens has on offer, before enjoying an incredible evening of music.

2024 line-up includes: Crowded House, Turin Brakes, Sheryl Crow, Chaka Khan, Sister Sledge, Soft Cell (pictured), Heather Small, Sugababes and Melanie C.



Download Festival

Donington Park, Derby, Fri 14 - Sun 16 June

With top billing consistently taken by some of the biggest names in rock and metal, it's not hard to see why Download is one of the most popular and well-attended festivals in the country.

Conceived as a follow-up to the Monsters Of Rock Festival, Download partly owes its name

to the pioneering way in which it uses technology to connect with audiences and build a community.

2024 line-up includes: Queens Of The Stone Age, Fall Out Boy (pictured), Avenged Sevenfold, Royal Blood, The Offspring, Limp Bizkit, Machine Head, The Used, Electric Callboy, Pantera, Black Stone Cherry, Sum 41, Enter Shikari, Corey Taylor and Billy Talent

Upton Jazz

various venues in Upton-upon-Severn,
Worcestershire, Fri 28 - Sun 30 June

Registered charity Upton Jazz Association has a couple of aims. One is to provide and encourage jazz music by inviting high-quality, award-winning and international talent to Upton. Its second aim is to encourage local and talented young people to explore the music and develop their skills and confidence in performance.

All profits from the sale of tickets are used to support the aims of the charity.

2024 line-up includes: Panama Quartet, Debbie Arthur's Quartet, Malvern Jazz Jam, Alan Barnes with John Hallam, Tom Kincaid, Nick Milward and Tom Hil, Hanley School Jazz Band, Amy Roberts Quintet (pictured) and Hotsy Totsy.



Forest Live

Cannock Chase Forest, Thurs 27 - Sat 29 June

Forest Live is a major live-music series held annually in forests around the UK.

Forestry England use the money the concerts raise to run important conservation projects, keep growing trees, and maintain beautiful natural areas for everyone to enjoy.

Last year they planted some 7.4 million trees, cared for the nation's 1,500 woods and forests sustainably and welcomed a staggering 291 million visitors.

2024 line-up: Olly Murs, Anne-Marie (pictured), The Charlatans and Johnny Marr.

Beardy Folk Festival

Hopton Court, Cleobury Mortimer, Shropshire,
Thurs 13 - Sun 16 June

Beardy Folk Festival is a beautifully crafted midsummer weekend boasting a programme of folk, roots and acoustic music.

There are plenty of workshops to sample too, including group singing, French dancing, ceilidh, yoga, morris dancing, spoken word, comedy, storytelling, woodland craft making and circus skills.

2024 line-up includes: Kate Rusby, Mad Dog Mcrea, The Magic Numbers, Blackbeard's Tea Party, 3 Daft Monkeys, The Deep Blue (pictured), Michele Stodart, An Audience With Bob Harris, Martin Stephenson & The Daintees and Blair Dunlop.



LICHFIELD FESTIVAL

4 - 14 JULY 2024

11 DAYS OF MUSIC,
PERFORMANCE
AND LITERATURE

Folk bands in the historic cathedral, book readings from top authors, outdoor plays, classical concerts popping up in churches, free fireworks and more.

For 11 days in July, Lichfield Festival brings music, performance, comedy and dance to venues across the city. Experience performances from world-class, award-winning artists and discover new talent in our diverse programme.

01543 306271
lichfieldfestival.org

Scan for more



Comedy previews from across the region...

Sally-Anne Hayward

Stourbridge Town Hall, Sat 15 June

If you're a Sarah Millican, Russell Howard, Russell Kane, Hal Cruttenden or Suzi Ruffell fan and have attended some of their shows, there's every chance that, prior to the main event, you will have had your laughter muscles nicely lubricated for you by Sally-Anne Hayward.

A real comedian's comedian, Sally-Anne's ever-so-nice persona conceals a caustic wit, cutting cynicism and generally bitchier side that serves her well as she takes a tongue-in-cheek look at the world around her. Her latest stand-up offering is *Egg Shortage*, a show in which she recounts 'hilarious tales of dating apps, fragile neighbours, and trying to hold in farts on a yoga retreat'.



Viggo Venn

Theatre Severn, Shrewsbury, Wed 26 June

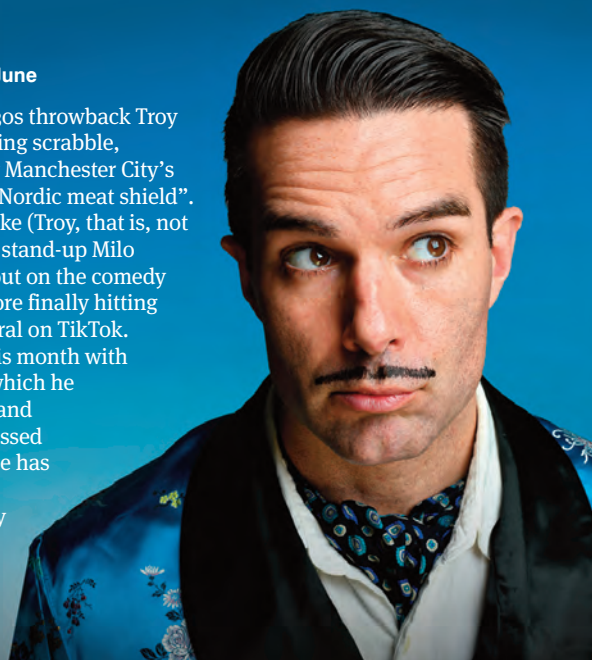
Viggo Venn hit the big time last summer when he became the 2023 winner of ITV's Britain's Got Talent, since which time he's been basking in the glory of finally achieving his long-desired transformation from Norwegian clown to British comedian. The BGT judges were certainly effusive in their praise for the talented 35-year-old, with Bruno Toniolo hailing him one of the most memorable characters since Mr Bean and Simon Cowell declaring his act to be like nothing he'd ever seen before. Viggo visits Shrewsbury this month as part of his first-ever national tour.



Troy Hawke

Birmingham Town Hall, Sat 29 June

Erudite and home-schooled 1930s throwback Troy Hawke lists his hobbies as playing scrabble, conspiracy theories and calling Manchester City's Erling Haaland "a tremendous Nordic meat shield". The foppish Errol Flynn-lookalike (Troy, that is, not Erling) - as played by character stand-up Milo McCabe - had been out and about on the comedy circuit for a good few years before finally hitting the online jackpot and going viral on TikTok. Troy is visiting the Midlands this month with The Greeters Guild, a show in which he 'examines his unlikely genesis and explores exactly why a well-dressed man simply being nice to people has caused such a kerfuffle'. Expect an evening of splendidly incongruous, occasionally brain-addling, delivered-with-warmth comedy.



Ruby Wax

Warwick Arts Centre, Coventry, Sat 29 June

American comedian Ruby Wax here presents what has been described as her rawest, darkest and funniest offering yet.

"The original idea behind this show [titled *I'm Not As Well As I Thought I Was*] was based on the extreme journeys that I wanted to take in order to find an antidote to living a frazzled life," says Ruby. "Along the way, I wanted to find meaning, peace, happiness - the stuff we're all chasing. However, after some transcendent experiences, I ended up in a mental institution... Obviously, I didn't find what I was looking for..."



Rhod's best-loved gags include: "In the Bible, God made it rain for 40 days and 40 nights. That's a pretty good summer for Wales... That's a hosepipe ban waiting to happen." And "A spa hotel? It's like a normal hotel, only in reception there's a picture of a pebble."

Catherine Bohart

The Glee Club, Birmingham, Sun 9 June;
Belgrade Theatre, Coventry, Wed 26 June

'The OCD, bisexual offspring of a Catholic deacon', Catherine Bohart's natural enthusiasm ensures excellent rapport with her audience, for whom the Irish comedian seems to have a genuine affection. Her jokes include: "Lesbian sex is like cricket: it goes on forever and there's a lot of men watching it at home, alone, on the internet."



Rhod Gilbert

Regent Theatre, Stoke-on-Trent, Fri 7 June

Welsh funnyman Rhod Gilbert has acquired a huge and still-growing following thanks to a high-energy brand of grumpiness that marks him out as one of the top comedians of his generation.

He's returning to the Midlands this month with *Rhod Gilbert And The Giant Grapefruit*, a show in which he discusses his recent battle against stage four head and neck cancer.

THE ROOM WHERE IT HAPPENS...

Birmingham Hippodrome is this month welcoming blockbuster musical Hamilton for the summer season...



When multi-award-winning musical Hamilton opened in the West End, it was the hottest ticket in town. Created by Lin-Manuel Miranda, the show - which tells the story of American founding father Alexander Hamilton through a mix of musical styles including hip-hop, rap, blues and jazz - had been a smash hit on Broadway and was the musical everyone was talking about.

Now Hamilton is on tour across the UK, coming to Birmingham Hippodrome this summer - and the buzz continues. For its two lead actors, Shaq Taylor as Hamilton and Sam Oladeinde as his friend and then nemesis, Aaron Burr, that fever pitch is both exciting and a little daunting.

"It's equally as thrilling as it is terrifying," says Sam, who understudied a host of lead parts in the West End production before taking on the role of Burr for the tour. "I think there is a huge amount of pressure and anticipation that comes with being part of this thing which everyone has heard of called Hamilton. But also I think, because the piece simply is incredible, very quickly that terror dies down, and it's just pure excitement and joy because the show carries everybody through; it really does. It's incredibly special."

Both men knew of the musical from its early days in the US and were keen to be part of its story.

"I've been a fan of Hamilton from when it first came out," says Shaq, "and from then on, I've been completely immersed in the whole world that is Hamilton. Now, to be able to be a part of that world is very scary because there's a lot to live up to. A lot of great artists have paved the way before me, and now to put my own stamp on this machine is amazing. So it's both very daunting and joyful at the same time."

London-born Shaq has a host of theatre credits to his name, including the Beast in Disney's Beauty And The Beast and Javert in Les Misérables. One of the benefits of touring is that it offers actors the chance to really dig into a role.

"That is the luxury of doing it so many different times," Shaq explains. "You get the chance to make so many choices and explore different nuances and play different elements of the character."

"They are very complex characters. I like how instinctive Hamilton is, how everything he does and says comes from his heart and he means it. It's always from a place of 'I feel this way, I'm going to say it this way and

everyone else is going to hear me.' From the way he has grown up as a young man, I feel like that has conditioned him to have this bravado, this 'me against the world' stance, and I feel he never loses that throughout this piece."

But, Shaq adds, Hamilton also has his flaws: "He is someone who definitely flies too close to the sun. There are moments in the piece where I catch myself, as Shaq, saying 'Just think about that situation a bit more and choose a different route because it would be better for yourself and those around you.' But unfortunately that's not how the story goes."

For Sam, who has recently appeared as vocalist Zalon Thompson in the Amy Winehouse film Back To Black, the chance to play Aaron Burr on tour was an opportunity not to be missed.

"I understudied several different roles in the West End, but I never went on for Burr, so it felt like the journey wasn't quite complete. So I feel like we are ending the journey, doing all of the tracks that I've learned and doing it in such a celebratory way, taking it to the audiences and breathing perhaps a different life into the show."

"The joy of doing the show eight times a week is that you fill out Aaron and he becomes an entire human being. And just like I am different Monday to Saturday, so Aaron Burr is different Monday to Saturday. It's really interesting when people come to the show more than once and say 'I saw a couple of different things today, and that was really exciting.' I think I've been able to delve deeper into the role, and I hope that means that audiences have been able to take even more from the story."

So why do the guys think Hamilton has been such a runaway success?

"I think the show is a building with many, many doors," explains Sam, "and absolutely everyone on this planet can find a door they like [through which] to enter the piece. People love the show for so many different things. You might love the hip-hop beat, you might love the lyricism, you might fall in love with the love story, you might fall in love with the politics."

"The show has every element of every type of story in it, but it's done so well that you fall in love with the show for one reason, and then you get to witness the joy of everything else. Every single element of the show is a strength - the choreography, the direction, the music, the band, the performances on stage, the sound, the lighting - the show has

won record numbers of awards in the UK, in America, around the world, and that's for a reason."

Shaq believes its story, in which a nascent nation takes on the weight of the British Empire and wins, resonates in its David & Goliath struggle.

"There's a strong togetherness that everyone can relate to in some sort of way, whether it's in their local community or fighting for something that they believe in. It may not be as big as this, but there's an undeniable force of togetherness when people fight for something they believe in."

Before taking on the role, Shaq learned a good deal more about the historical figure of Hamilton and his era.

"It's good to know the basics so that you can immerse yourself in the world of Alexander Hamilton. Ron Chernow's Alexander Hamilton, the book that the musical is based off, is so detailed. It goes through the emotions of Hamilton from a young age. It holds so much information that never made it into the musical, but it's good to know those parts of his life to connect the dots and create nuances within our piece."

Sam, too, spent time learning more about the real-life characters, reading biographies of both Hamilton and Burr - and making some research visits.

"I used to work as a lawyer in New York, so the last time I was there, I went and visited some of the venues that we find ourselves in in the show. Then just doing a bit of a deep dive into the history of the show itself was fascinating, as well as trying to understand all of the musical references."

"Hamilton and Burr are written so well and are polar opposites. I think that Burr feels a sense of jealousy quickly and doesn't necessarily understand that his success doesn't negate others' success, and the other way round. But I also think he is a very intelligent and kind and considerate person, so I try and play Aaron in a way that makes the audience feel that they *are* Aaron in those situations. I think it's much easier to think of yourself as Aaron, who is an ordinary person, who is smart but a little bit flawed, as opposed to this unique, headstrong, bright Hamilton. He is the exception to the rule - which is why the musical is Hamilton!"

.....

Hamilton shows at Birmingham Hippodrome from Tuesday 25 June to Saturday 31 August



The Wizard Of Oz

Birmingham Hippodrome, Tues 11 - Sun 16 June; Wolverhampton Grand Theatre, Tues 30 July - Sun 4 August

Craig Revel Horwood (Hippodrome) and The Vivienne (Grand Theatre) star as the Wicked Witch of the West alongside Aston Merrygold as the Tin Man in this classic story from the imagination of L Frank Baum.

A marvellous mix of magic, mayhem and munchkins, the terrific tale tells the story of Kansas resident Dorothy Gale and her unexpected trip over the rainbow to the colourful land of Oz. Once there - and accompanied by a literally brainless scarecrow, a tin

man who's missing a heart and a cowardly lion in urgent need of some courage - she determines to travel along the Yellow Brick Road, visit the Emerald City, and ask the Wonderful Wizard of Oz to help her find her way back home to Kansas...

Only trouble is, the aforementioned Wicked Witch of the West has other, far more sinister plans for her...

Featuring the iconic original score from the Oscar-winning MGM film - including Follow The Yellow Brick Road, We're Off To See The Wizard, and of course Over The Rainbow - this hit show visits the Midlands direct from the London Palladium and includes additional songs by Andrew Lloyd Webber and Tim Rice.

Frankie Goes To Bollywood

Wolverhampton Grand Theatre, Tues 11 - Sat 15 June; Belgrade Theatre, Coventry, Tues 2 - Sat 6 July

Frankie never wanted to be a star; she just wanted a family. But after a chance encounter with an up-and-coming director, she finds herself transported to Bollywood... Described as a breathtakingly colourful journey of romance, sweeping songs and vibrant dance, Frankie Goes To Bollywood has been inspired by real stories of British women who've been 'caught in the spotlight of the biggest film industry in the world'. The show is a Rifco Theatre Company, Watford Palace Theatre and HOME Manchester co-production.



The 39 Steps

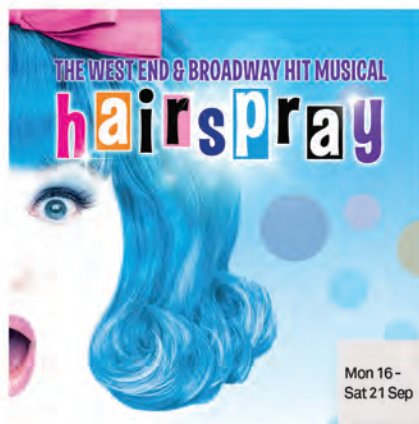
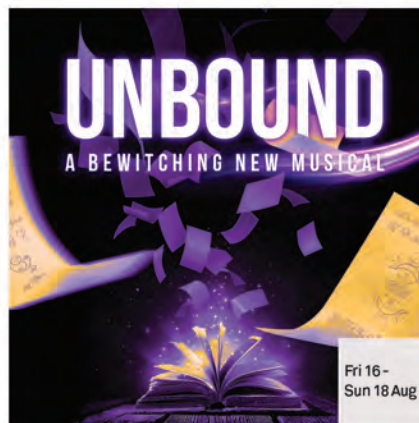
The Alexandra, Birmingham, Tues 4 - Sat 8 June

Anybody who remembers the various film versions of classic John Buchan spy thriller The 39 Steps would be hard-pressed to call any of them 'humorous'. So it's a bit weird, to say the least, to imagine an adaptation of the story that majors in belly laughs. Nonetheless, that's exactly what's being served up here, in a much-loved show that's been doing the rounds for many a year.

So why not catch up with handsome hero Richard Hannay as he battles to remain impressively stiff-upper-lipped in the face of dastardly murders and life-threatening encounters with double-crossing secret agents.

Four fearless actors take on 139 roles in a 100-minute show that offers plenty of fun.







The Mousetrap

Theatre Severn, Shrewsbury, Mon 3 - Sat 8 June; Wolverhampton Grand Theatre, Tues 25 - Sat 29 June

Not only has everybody heard of Agatha Christie's *The Mousetrap*, everybody's seen the show as well - haven't they?... Okay, maybe not, but as the production recently celebrated its 70th anniversary, it's fair to say its capacity to put bums on seats is absolutely beyond question. Not surprisingly the world's longest-running show, its touring version is now making a welcome return to the Midlands. *EastEnders'* Todd Carty top-bills in Shrewsbury, and is then joined in Wolverhampton by *Only Fools And Horses* favourite Gwyneth Strong.

Windrush: The Journey

Patrick Studio, Birmingham Hippodrome, Thurs 13 - Sat 15 June

With a well-deserved reputation for championing diverse talent in opera, Pegasus turn their attention to the journey of *Windrush*, showcasing a tapestry of music and storytelling while at the same time celebrating three Black classical composers: Chevalier de Saint Georges, Richard Thompson and Des Oliver... A free exhibition, featuring photographs, music and local *Windrush* testimony, will be on display at the Hippodrome during the week of the show.

Rush

The Rep, Birmingham, Tues 25 - Sat 29 June

Pegasus Opera Company's production at the Patrick Studio (see above) isn't the only opportunity for Midlands theatregoers to immerse themselves in the story of the *Windrush* generation this month... Subtitled *A Joyous Jamaican Journey*, *Rush* is written and narrated by John Simmit and features ska, rock steady, calypso, gospel, lovers rock, dancehall and Reggae music, all played live by the JA Reggae Band.

Shakespeare In Love

Brewhouse Arts Centre, Burton upon Trent, Tues 25 - Sat 29 June

The Burton-based Little Theatre Company here present a stage version of the Marc Norman & Tom Stoppard-scribed Oscar-winning film of the same name. The story finds the usually brilliant bard of Stratford struggling with writer's block. Meanwhile, Viola De Lesseps - desperate to be an actor even though women are

forbidden to be on stage - disguises herself as a boy and auditions for Will's new play. When the two meet by chance, the encounter becomes the inspiration for one of the greatest love stories ever told...

Austen's Women: Lady Susan

Theatre Severn, Shrewsbury, Wed 19 June

Tudor queen. Shell-shocked soldier. Hollywood icon... Dyad Productions' Rebecca Vaughan portrays a dazzlingly diverse array of characters in her critically acclaimed solo shows. With previous theatrical offerings having included *Elizabeth*, *Female Gothic* and *A Room Of One's Own*, Rebecca now returns with a brand-new show about *Lady Susan Vernon*, the coquettish, black-widow protagonist of an early novella by Jane Austen, believed to have been written in 1794 but not published until 1871.



The Massive Tragedy Of Madame Bovary

Lichfield Garrick, Mon 17 & Tues 18 June

Vermin, visual absurdity, wild animals and a nun are brought together in Ha Hum Ah and Minack Theatre's version of Gustave Flaubert's *Madame Bovary*. Described by its publicity as irreverent, irrepressible and irresistible, the production sees four actors battling 'hilarious mishaps and misbehaving props to tell the (massively) tragic story' of a woman who's desperately in need of a little fun in her life.

Oddsocks: Julius Caesar

Tamworth Castle, Sun 9 June; Belgrade Theatre, Coventry, Mon 17 - Wed 19 June; Avoncroft Museum, Bromsgrove, Wed 26 June; Bowring Park, Telford, Sun 7 July; Compton Verney, Warwickshire, Thurs 12 July; Victoria Gardens, Tewkesbury, Sun 14 July; Brueton Park, Solihull, Tues 13 August

When Roman emperor Caesar is assassinated by a group of prominent senators, one of his staunchest supporters, Mark Antony, manages not only to turn the crowd against the conspirators but also to defeat them in battle... But let's avoid getting too bogged down in the whys and wherefores of Shakespeare's extremely serious tale of conspiracy and bloody murder - given that it's here being presented by zany funsters Oddsocks! The ever-entertaining band of theatricals are promising their audiences thrills and spills aplenty, including the tearing of togas, the swishing of swords, some splendidly preposterous puppetry and the biggest battle scene ever created by five actors. In short, it's time to brace yourself for the kind of laughs you have no right to expect in a production of *Julius Caesar*...



DIRECT FROM LONDON'S WEST END

SWEET
CAROLINE
NEIL DIAMOND
THE ULTIMATE TRIBUTE



WED 24 JUL '24
SWEET CAROLINE

WOLVERHAMPTON GRAND THEATRE PRESENTS



TUE 16 - SAT 20 JUL '24
I LOVE YOU, YOU'RE PERFECT,
NOW CHANGE



TUE 20 - SAT 24 AUG '24
101 DALMATIANS THE MUSICAL

LOVE & TALKER IN ASSOCIATION WITH PAUL KERRICK'S DAUGHTERS PRESENT
**WHAT'S LOVE GOT
TO DO WITH IT?**
THE ULTIMATE TRIBUTE TO TINA TURNER



THU 29 AUG '24
WHAT'S LOVE GOT
TO DO WITH IT?



oddsocks

'TOGA-LLY' HILARIOUS, FUN FOR ALL OF THE FAMILY!

JULIUS CAESAR



TAMWORTH CASTLE GROUNDS

Staffordshire

9 June

tamworthartsandevents.co.uk

01827 709618

BELGRADE THEATRE

Coventry

17-19 June

belgrade.co.uk

024 7655 3055

AVONCROFT MUSEUM

Bromsgrove

26 June

oddsocks.co.uk

0333 666 3366

BOWRING PARK

Telford

7 July

telfordtheatre.com

01952 382382

COMPTON VERNEY

Warwickshire

12 July

oddsocks.co.uk

0333 666 3366

VICTORIA GARDENS

Tewkesbury

14 July

rosetheatre.org

01684 295074

BRUETON PARK

Solihull

13 August

thecoretheatresolihull.co.uk

0121 704 6962

NEW VIC

A thrilling ghost story from one of Britain's most loved authors

CHARLES DICKENS'

THE HAUNTING

BY HUGH JANES

SHOWING UNTIL SAT 15 JUNE

Box Office 01782 717962

newvictheatre.org.uk



Image by musecreativecomms.co.uk

Theatre previews from around the region



The Syndicate

Theatre Severn, Shrewsbury, Tues 18 - Sat 22 June; The Alexandra, Birmingham, Tues 25 - Sat 29 June

With their jobs and livelihoods under threat, five supermarket workers have a stroke of luck when their lottery syndicate numbers come in. But will a share of the jackpot make their dreams come true - or their nightmares a reality?... This stage adaptation of the popular Kay Mellor-written television series is being directed by the late playwright's daughter, the actress Gaynor Faye.

"Mum's shoes are big ones to fill," says Gaynor, "but I understand what her vision was for this production because I had been by her side from the very beginning. I'm excited for everyone to see it."

The show stars two familiar faces from the world of television soap operas: Brooke Vincent (Sophie Webster in Coronation Street) and Samantha Giles (Emmerdale's Bernice Blackstock).

Twelfth Night: A Cornish Tale

Stafford Gatehouse Theatre, Fri 21 June - Sun 7 July

Comedian Seann Walsh takes on the coveted role of Malvolio in this Stafford Festival Shakespeare production, the second to be performed in the Gatehouse theatre rather than outdoors in the grounds of the town's castle.

As with many Shakespeare comedies, Twelfth Night is based on a case of mistaken identity, with Viola disguising herself as a boy and causing all manner of awkward romantic shenanigans. However, the play's continuing popularity can mainly be attributed to its hilarious (well, by Shakespeare's standards anyway) comic sub-plot, in which the merciless Sir Toby Belch and his foolish companion, Sir Andrew Aguecheek, seek to humiliate the pompous Malvolio (and achieve their aim in fine style)...

As the show's subtitle makes clear, this particular version of Twelfth Night comes complete with a Cornish theme. Natalie Anderson and the Bafta-winning Molly Windsor also star.

Yes, We're Related

Old Joint Stock Theatre, Birmingham, Thurs 6 & Fri 7 June

According to its publicity, audience members should get ready to laugh, cry and 'eat trifle' when they take their seat for Florence Lacey-Evans' 'nutty new comedy'.

Showing in Birmingham prior to a run at the Edinburgh Fringe, the play finds Sara, who's in denial about the death of her mother, being visited by her estranged older sister, Saskia. Events then take a turn for the worse as a result of a secret being revealed, one which sees the sisters' relationship going from bad to absolutely catastrophic...



Kyoto

Swan Theatre, Stratford-upon-Avon, Tues 18 June - Sat 13 July

Written by Joe Murphy and Joe Robertson, Kyoto is being produced by the Royal Shakespeare Company in collaboration with Good Chance - of which the aforementioned Joes are founders and co-artistic directors. The organisation started life in the Calais 'Jungle' refugee camp in the mid-2010s, where thousands of people were waiting for their 'good chance' to reach the UK. When the Joes visited the camp, they decided to build a dome theatre there, so that people of all nationalities could come together to share stories, music and art. Having since enjoyed a major critical success



with a play about the refugee experience (The Jungle), Murphy and Robertson have now turned their attention to another highly topical subject: climate change...

Described as a fast-paced political thriller, their new play takes audiences into the heart of the historic 1997 climate summit, which took place in the Japanese city of Kyoto (hence the title).

With time running out, the world's nations scramble to agree the first-ever legally binding emissions targets. They're desperate to get the deal signed, sealed and delivered - but American oil lobbyist and master strategist Don Pearlman has other ideas...

Party Games!

Malvern Theatres, Tues 25 - Sat 29 June

With a general election on the not-too-distant horizon, what better time to check out a play about the chaos of government and the state of politics in the UK?

It's the year 2026, and John Waggner, the newly elected leader of the centrist and hastily formed One Nation Party, presides over a hung parliament, a discontented electorate and a workforce of striking cheese makers.

He and his power-hungry MPs must cling onto authority through whatever shaky means possible. Can one man, a Svengali spin doctor and some dodgy data unite the country? And what role can his wife, the King and a large spider play in keeping the lights on? This acerbic new comedy stars Matthew Cottle, Debra Stephenson and Ryan Early.

RSC

STRATFORD-UPON-AVON
18 JUNE – 13 JULY 2024



A CO-PRODUCTION WITH GOOD CHANCE

KYOTO

BY JOE MURPHY AND JOE ROBERTSON
DIRECTED BY STEPHEN DALDREY AND JUSTIN MARTIN
A GOOD CHANCE COMMISSION

BOOK NOW
rsc.org.uk

TikTok

£10
TICKETS
FOR
14-25s



Supported using public funding by
ARTS COUNCIL
ENGLAND

THE OLD JOINT STOCK PRESENTS

FIRST DATE

A COMEDY MUSICAL

BOOK BY AUSTIN WINSBERG
MUSIC AND LYRICS BY ALAN ZACHARY
AND MICHAEL WEINER
DIRECTED BY JAMES EDGE

7TH - 25TH AUGUST 2024

OLD JOINT STOCK THEATRE, BIRMINGHAM | OLDJOINTSTOCK.CO.UK
BOX OFFICE ENQUIRIES: 0121 200 1892

FIRST DATE is presented by arrangement with Concord Theatricals LTD. www.concordtheatricals.co.uk

NEW VIC
education

NEW VIC

SUMMER HOLIDAY PROJECTS 2024

Join us this summer for our fantastic holiday projects, from crafts and drama for younger children to A Play in a Week for older children.

The Real Secret Garden

Tue 6 - Wed 7 August
Ages 5-9 £50



Keeping the Garden's Secrets

Mon 29 July – Fri 2 August
Ages 10-15 £120

To find out more information email lperry@newvictheatre.org.uk
To book, visit www.newvictheatre.org.uk or call the
Box Office on 01782 717962

Theatre for younger audiences



In The Night Garden Live!

Belgrade Theatre, Coventry, Fri 21 & Sat 22 June; Theatre Severn, Shrewsbury, Wed 4 & Fri 5 September

If your little ones are big fans of the much-loved CBeebies television series, they're certain to adore this live version as well. And it's not only the kids who're in love with the stage shows; according to audience surveys and parents' reviews, nine out of 10 adults consider In The Night Garden Live to be a five-star theatrical experience.

The show lasts for 55 interval-free minutes, sees Igglepiggle looking for his friends in the Night Garden (by following their funny sounds), and features a very special visit from 'the amazing flying Pinky Ponk'.

Zog And The Flying Doctors

Crewe Lyceum Theatre, Fri 14 - Sat 16 June; William Aston Hall, Wrexham, Sat 22 - Sun 23 June

Freckle Productions' hugely popular stage version of the much-loved Julia Donaldson & Axel Scheffler story finds accident-prone dragon Zog providing an air-ambulance service with the assistance of his 'flying doctor' crew - namely, Princess Pearl and Sir Gadabout. But Pearl's uncle, the king, doesn't believe that princesses should be doctors, so before too long she finds herself locked up in the castle and once again forced to wear a crown and a 'silly frilly dress'. Needless to say, help is soon at hand...

you'd think'), an adorable unicorn and a majestic griffin. Oh, and there's a dragon, too - but the producers strongly advise that you avoid at all costs waking it up...



about a knight... who also has a favourite book... You get the idea?...

Created for children aged between three and eight, the show has a running time of one hour.

PSYCHEdelight: Mohand & Peter

Midlands Arts Centre, Birmingham, Sat 15 & Sun 16 June

Mohand Hasb Alrosol Abdalrahman and Peter Pearson visit Birmingham with this critically acclaimed play, a family-friendly work of physical theatre which celebrates the country and culture of Sudan, the home of refugee Mohand.

"Every day for the past five years, I witnessed how much my cast miss their homes," says Sophie Bertrand Besse, whose participatory theatre company, PSYCHEdelight, is producing the show. "I saw pictures of beautiful lakes, mountains and ancient buildings; videos of family gatherings, birthdays and silly cats. I Facetimed brothers, sisters, but also nieces and nephews - those kids that we spoil at weekends but that the people I work with have never held in their arms because they are not allowed to go back. Not for a wedding, not for a funeral, never. Their country is not just a war zone or a Taliban nest, it's their homes. With Mohand and Peter, we aim to celebrate them."



Dragons & Mythical Beasts Live

Warwick Arts Centre, Coventry, Sat 1 & Sun 2 June

If you caught and enjoyed Dinosaur World Live when it toured to the region, then Dragons & Mythical Beasts Live should also float your boat, as it's produced by the very same creative team. An interactive show for all the family to enjoy, the production boasts a cast of 'magnificent monsters and terrifying beasts'. These include the colossal Stone Troll, the mysterious Indrik and Japanese Baku, the Tooth Fairy (who's 'not as sweet as

Charlie Cooke's Favourite Book

Swan Theatre, Worcester, Tues 11 & Wed 12 June; Palace Theatre, Redditch, Tues 16 & Wed 17 July; Theatre Severn, Shrewsbury, Fri 27 - Sun 29 September

Given the success of so many other stage adaptations of Julia Donaldson & Axel Scheffler's hugely popular stories (see, for example, Zog And The Flying Doctors elsewhere on this page), it's a real no-brainer to mount a live version of Charlie Cook's Favourite Book.

Presented via the ever-popular combination of clever puppetry and enchanting songs, the show follows Charlie's attempts to get his sister to read.

Charlie himself loves reading. For him, there's nothing better than settling down to enjoy a favourite book about a pirate... who also has a favourite book... about Goldilocks... who also has a favourite book...



EASY PEASY

**Staffordshire's New Vic Theatre is this month presenting
a brand-new circus-fairytale adaptation of
Hans Christian Andersen's The Princess And The Pea...**



Staffordshire's New Vic Theatre has joined forces with Upswing contemporary circus company and London's Unicorn Theatre to present an innovative stage version of Hans Christian Andersen's *The Princess And The Pea*. The play promises to be a circus spectacle that provides fun for all ages - and features a huge pile of mattresses! What's On spoke to New Vic Artistic Director Theresa Heskins, who has adapted and co-directed the show, to find out more...

Rehearsals are up and running for *The Princess And The Pea* at London's Unicorn Theatre, before it transfers to the New Vic on Wednesday 19 June. What's behind the decision to create this show, Theresa?

It was the artistic director here at the Unicorn, actually, who asked me and Upswing's Vicki Dela Amedume to think about a version of *The Princess And The Pea*, Hans Christian Andersen's short story. Vicki's a circus director and I love comedy, so immediately we thought we wanted to do something that's a piece of circus slapstick; really funny, really full of circus and energy, really engaging, and aimed at a very wide audience, from very little ones right up to adults who like a laugh - and who doesn't?

What's your history in terms of working with Upswing and the Unicorn?

It's our first time working with the Unicorn. They're the country's leading theatre for children and young people, and the New Vic's programme of work for children and young people is really significant and important to us - and to hundreds of thousands of young people in the area - so it's wonderful working with them.

Upswing we've been working with for about 12 years, bringing circus to the New Vic and to New Vic audiences, most recently with Astley's Astounding Adventures, which was incredibly popular and breathtaking and wonderful. The New Vic's actually engaged in a partnership with Upswing to bring circus to the Potteries, and that means creating shows, circus performance, community events, education and training.

Astley's Astounding Adventures was a big hit - is there pressure to follow on from last year's triumph?

There always is when you do something that's been successful. Our last Hans Christian Andersen was a version of *The Snow Queen*, at Christmas a few years ago. That was really popular, and it won the UK Theatre Award for Best Show for Children & Young People. We've got pressure on all sides, for our track record with Hans Christian Andersen and with Astley's Astounding Adventures, and all sorts of other things.

When you're making work for young people, I think that's a huge responsibility too. You want the whole family to come and have a wonderful time, and you're making an impact that a child's probably going to remember for

the rest of their lives. We do remember those early theatre experiences more than any others.

Why do you think circus has been such a big hit in Stoke?

We are quite unique, I think. Because the inventor of the modern circus, Phillip Astley, came from Newcastle-under-Lyme, it's in our bones. He's our Shakespeare, really. Circus has a special importance in our area.

You can go to the circus in any country and understand it. It's a kind of international artform that goes beyond language and crosses all age ranges.

The Princess And The Pea actually has no words in it, so it's as accessible as possible to as wide an audience as possible, in that true circus form.

What makes Hans Christian Andersen's stories work so well when adapted for the stage?

There's something very strong about his concepts - the mattress tower is a really strong image. Thinking about *The Snow Queen*, the sense of all that ice and snow and frost is very evocative. *The Little Mermaid* is one of his, and that sense of the world under the sea makes such a brilliant theatrical environment. I suppose they've all also got quite a lot of action, and really enticing stories that are quite poignant and quite funny at the same time.

How do you make sure that your shows have a broad appeal?

We sort of always make them with the family in mind, because usually the way young people are coming to the theatre is within quite a wide family group - often a group with three or four generations coming along together. Everybody primarily wants the children to enjoy it; they want to make sure that they're having a lovely time, but we want them *all* to enjoy it.

I think fundamentally it comes down to making sure that the theatre-making is very sophisticated. There's nothing simple about the approach we take. The soundtrack is incredibly complicated - there's this raft of really detailed sound effects that need a lot of skill to deliver. The circus performers are doing very complicated skills that they're learning from the ground up in some instances. Everything about it - the design and lighting and everything - is very

sophisticated, but the storytelling is fast and energetic and full of action. I think that's what keeps young people engaged. Slapstick humour of the Laurel & Hardy type has huge appeal across the generations.

Is it a modern interpretation of the story?

It's a bit of a remix, but we're not setting it in modern times - it's set in fairytale land. It's interesting - the original story is one paragraph long. It's an elevator pitch rather than a story!

The story we have in mind - the princess is trying to get a good night's sleep and is so sensitive that she can't sleep, and there's a pea under the bed - that's all it is.

We've had a brilliant experience here at the Unicorn, where for six weeks before rehearsal started, every Saturday a group of young people and their families came in, and we worked with them to get a sense of what the story might be from their point of view; what music they like, what makes them laugh...

One of the things we found all of them talked about, the children *and* the parents, was the difficulty of getting to sleep at night even without a pea under the bed. It feels as though it's a very important part of every parent and child's life - the bedtime stories or the bedtime songs.

What are you looking forward to most about the production?

So much! I'm particularly looking forward to seeing the audience. We had a small group of young people in on Saturday that we've been working with, who saw some of it, had a sneak preview and told us what they thought. I suppose the thing that's been really interesting is that, in drawings and in storybooks, a mattress tower with a person sleeping on the top of it is a really easy thing. When you try to build a tower of 20 mattresses and put a performer on top of it, it's very different!

If they're covered in slippery fabrics, the mattresses fall off, taking the performer with them. How do you get up a mattress tower? Do you jump up, do you climb up, what do you do to get up there? And how do we keep it still? It's quite an engineering miracle that had to be created.

.....
The Princess And The Pea shows at New Vic Theatre, Newcastle-under-Lyme, from Wednesday 19 until Saturday 29 June

BEYOND THE STARRY NIGHT

BEYOND *Van Gogh*

The Immersive Experience

BIRMINGHAM

NEC - BIRMINGHAM

NOW ON SALE

LIMITED RUN FROM 1 AUGUST

BOOK NOW: www.quaytickets.com



annerin productions

Light entertainment from around the region



Voices Of Evil

Old Joint Stock Theatre, Birmingham,
Sat 29 - Sun 30 June

Self-described 'poof prince of puppets' Lachlan Werner is here joined for an evening of laughter and chaos by a green-faced witch named Brew. The witch is a puppet brought to life by Lachlan via the nowadays woefully undervalued art of ventriloquism.

The show's storyline sees Brew deciding to sacrifice Lachlan - to help with his self-esteem - only to find that the endeavour inadvertently releases a sinister entity with an unbridled lust for destruction...

A debut show from Lachlan, Voices Of Evil should tick plenty of boxes for anybody who likes their comedy delivered with a substantial - but in no way traumatising - side-order of horror, gore and ritualistic blood sacrifice...

The Horne Section's Hit Show

Warwick Arts Centre, Coventry, Tues 18 June;
Symphony Hall, Birmingham, Wed 11 September

A six-headed comedy band comprising five talented musicians and one non-musical stand-up, The



Horne Section have been blowing their own trumpet to excellent effect for well over a decade now. Led by comedian (and creator of Bafta-winning television series Taskmaster) Alex Horne, and specialising in spoof and comedy songs, the boys have plenty of TV appearances to their name and also boast a chart-topping podcast. The fellas visit Warwick Arts Centre this month with a show that blends 'comedy, songs, enthusiastic dancing and a lot of mucking about'.

Mrs Kapoor's Daughter's Wedding 2 Mauritius

The Alexandra, Birmingham, Sun 23 June

Mrs Kapoor's Daughter's Wedding scored a big hit when it toured to the Midlands, and there's every chance that this sequel - featuring the same winning blend of relatable comedy and Bollywood-style glamour - will be accompanied by a similar cascade of well-deserved plaudits when it stops off in Birmingham this month. The show's storyline is wafer-thin, but where the production really scores is with its high-

energy feelgood factor, imaginatively blending dancing and singing to create a party atmosphere that's clearly enjoyed by audiences and performers alike.

Between The Covers Live

Birmingham Town Hall, Tues 4 June

This coming together of celebrity book worms sees actors Kacey Ainsworth and Stephen Mangan, comedian Jo Brand and bestselling author Joseph O'Connor waxing lyrical about some of their favourite reads. The show is based on the popular same-named BBC television series hosted by Sara Cox.

Uncanny: I Know What I Saw

Patrick Studio, Birmingham Hippodrome, Sun 2 June; Regent Theatre, Stoke-on-Trent, Wed 3 July

Danny Robins, the creative force behind spooky podcast The Battersea Poltergeist and spintangling stage production 2:22 - A Ghost Story, here makes a welcome return with a chilling showcase of real-life stories of the supernatural. Brought to life through 'thrilling theatrical invention in a mix of projection, sound and spellbinding storytelling', the terrifying tales relate to very modern hauntings. Danny and the team will not only be recounting the strange encounters but also debating what they think actually happened in each case.



La Voix

Crewe Lyceum Theatre, Thurs 27 June

One-time Britain's Got Talent semi-finalist La Voix has been playing the cabaret circuit for all she's worth these last few years, picking up plaudits - and devoted fans - like they're going out of fashion.

As her stage name suggests, she's an impressive vocalist, but she's also a talented impersonator and bitingly funny comedian. Past routines have seen her explaining that the only difference between performing as Shirley Bassey and Tina Turner is that, when she's impersonating Tina, she leaves the coat hanger in her dress and holds a football between her legs!

Cirque: The Greatest Show

Theatre Severn, Shrewsbury, Mon 24 & Tues 25 June; Wolverhampton Grand Theatre, Thurs 4 July; Symphony Hall, Birmingham, Thurs 27 July; Belgrade Theatre, Coventry, Fri 13 September

Musical theatre and jaw-dropping circus combine in this intriguing touring show.

The production sees stars of the West End performing alongside 'amazing aerialists, incredible contortionists and fabulous fire jugglers' as they undertake 'thrilling feats of agility and flair'... Cirque is certainly an interesting concept, and it's to be hoped that the performers really embrace the challenge of seamlessly combining two such hugely popular art forms.



BIRMINGHAM ROYAL BALLET

Director Carlos Acosta

Sir Frederick Ashton's

La Fille mal gardée

25 – 28 September

H BIRMINGHAM
HIPPODROME

brb.org.uk/Fille

Don't miss Birmingham Royal Ballet at the Museum
this June. Visit brb.org.uk/bmag to find out more.

Birmingham
City Council

ARTS COUNCIL
ENGLAND

Dance previews from across the region

Ballet Black

The Rep, Birmingham, Thurs 13 & Fri 14 June

Award-winning Ballet Black comprises British and international dancers of black and Asian descent and takes an impressively daring approach to its work. Under the guidance of Artistic Director Cassa Pancho, the company is here making a welcome return to the Rep to perform a mouthwatering double bill...

Taking the umbrella title of *Heroes*, the show includes award-winning choreographer Mthuthuzeli November's *The Waiting Game* - a contemplation on the purpose of life, infused with a dynamic soundtrack featuring the voices of Ballet Black artists. Accompanying Mthuthuzeli's creation is a celebratory and original piece by Franco-British artist and Scottish Ballet choreographer-in-residence Sophie Laplane. Created especially for Ballet Black, the new work, titled *If At First*, explores the complexity of humanity, heroism and self-acceptance... *Heroes* has a running time of 95 minutes, including an interval.



Black British Ballet: Island Movements

Patrick Studio, Birmingham Hippodrome, Sat 22 June

Driven by a pulsating soundtrack of reggae, calypso and contemporary black British music, this 30-minute show explores the impact of the Windrush generation's experiences on their families, communities and society.

The production is presented as part of a project celebrating and sharing the hidden history of black pioneers in British ballet.

A 45-minute Q&A session will take place after the show.

Ballet Cymru: Romeo A Juliet

New Vic Theatre, Newcastle-under-Lyme, Mon 10 June; The Roses, Tewkesbury, Fri 28 June; Lichfield Cathedral, Thurs 11 July

The proudly Welsh and impressively creative Ballet Cymru has garnered a reputation for presenting productions which are innovative, challenging and original. Touring to a host of venues throughout the UK on an annual basis, the company is here making a welcome return to the Potteries with its energetic adaptation of *Romeo & Juliet*, a show which earned plenty of praise the last time it visited the New Vic Theatre.

KVN Dance Company: Coppelia

Albany Theatre, Coventry, Thurs 20 June

Eccentric toy maker Dr Coppélius' lifesize clockwork doll, Coppelia, causes quite a stir - not only in the heart of the red-blooded Franz but also in the mind of his jealous fiancée, Swanilda, who foolishly mistakes Coppélius' creation for a flesh-and-blood rival...

KVN Dance Company fuse classical ballet with contemporary dance and hip-hop to present a show that brings together Leo Delibes' dazzling score - remixed by Richard Berg - with some truly impressive choreography. The production runs for just short of two hours and includes an interval.



Echoes: Mi Flamenco

Theatre Severn, Shrewsbury, Fri 21 June

Filmic imagery, music to stir the soul and extraordinarily emotive flamenco dancing is the winning combination of ingredients with which *Mi Flamenco* has cooked up this eagerly anticipated feast of entertainment. "Our inspiration comes from how flamenco speaks to us," explains the company. "We are constantly evolving to find ways of expressing that voice to our audiences; to intrigue and inspire."

Nadiya & Kai: Behind The Magic

Malvern Theatres, Thurs 13 June; Symphony Hall, Birmingham, Mon 24 June

"I can't wait for everyone to see our new show," says Ukrainian dancer Nadiya Bychkova in talking about this latest on-stage team-up with her real-life partner and fellow *Strictly* star Kai Widdrington. "It's so exciting to be able to throw a lifetime of my thoughts, visions and dreams into *Behind The Magic*, and to create something unique and inspiring with the most talented and incredible people."

Featuring 'fabulous outfits, wonderful music and, of course, sensational dancing', the production invites its audience behind the scenes to witness 'how the magic comes together'.

"Starring in *Once Upon A Time*, our first headline tour, was the realisation of a lifelong dream for both Nadiya and I, a real career highlight," says Kai. "Now we get the chance to do it all over again this summer with our brand-new show!"



Film highlights in June...



Inside Out 2 CERT PG (100 mins)

With the voices of **Amy Poehler, Phyllis Smith, Lewis Black, Tony Hale, Liza Lapira, Maya Hawke** Directed by **Kelsey Mann**

Disney and Pixar's first Inside Out film proved to be an unexpectedly huge hit, so a sequel was of course an absolute no-brainer.

And speaking of brains, that's exactly where this second film yet again takes its audience; into the mind of newly minted teenager Riley. The visit there coincides with a profoundly significant happening - headquarters is undergoing a sudden demolition, to make room for something entirely unexpected: new Emotions! Joy, Sadness, Anger, Fear and Disgust, who've long been running a successful operation by all accounts, aren't sure how to feel when Anxiety shows up. And it looks like she's not alone...

Released Fri 14 June

The Watched CERT tbc (102 mins)

Starring **Dakota Fanning, Georgina Campbell, Olwen Fouère, Siobhan Hewlett, Hannah Howland, Alistair Brammer**
Directed by **Ishana Shyamalan**

When young artist Mina gets stranded in an expansive, untouched forest in western Ireland, she unknowingly becomes trapped alongside three strangers who are watched and stalked by mysterious creatures every night... Having scored a significant hit as director with last year's *Knock At The Cabin*, M Night Shyamalan now looks set to enjoy further success - on this occasion as co-producer - with this spine-tingling adaptation of AM Shine's supernatural horror novel. The film sees Night Shyamalan's daughter, Ishana, taking the directorial reins for the very first time.

Released Fri 7 June



The Bikeriders CERT 15 (116 mins)

Starring **Jodie Comer, Austin Butler, Tom Hardy, Michael Shannon, Mike Faist, Boyd Holbrook** Directed by **Jeff Nichols**

Jodie Comer yet again displays her star quality in this critically acclaimed biker movie. She's joined by Austin Butler, whose impressive performance offers further evidence - were any to be needed - that he's got plenty more in his acting locker than his often-spellbinding impersonation of Elvis from a couple of years back.

Capturing a rebellious time in America, when the culture and people were changing at

seemingly breakneck speed, *The Bikeriders* sees a strong-willed Kathy (Comer) finding herself inextricably drawn to Benny (Butler), the newest member of The Vandals, a Midwestern motorcycle club led by the enigmatic Johnny (Tom Hardy, in excellent form).

Much like the country around it, the club begins to evolve. As it transforms from a gathering place for local outsiders into a dangerous and violent underworld, Benny finds himself forced to choose between Kathy and his loyalty to The Vandals...

Released Fri 21 June

Kinds Of Kindness CERT tbc (164 mins)

Starring **Emma Stone, Jesse Plemons, Willem Dafoe, Margaret Qualley, Hong Chau, Joe Alwyn** Directed by **Yorgos Lanthimos**

"It's a contemporary film, set in the US," director Yorgos Lanthimos explained to the Guardian, in talking about his latest movie, *Kinds Of Kindness*. "Three different stories, with four or five actors who play one part in each story, so they all play three different parts. It was almost like making three films, really."

Following on from *The Favourite* and *Poor Things*, Yorgos once again teams up with Emma Stone, calling to mind other well-established director-actor partnerships such as Scorsese and De Niro, Tarantino and Samuel L Jackson. This latest collaboration is an epic (at nearly three hours in length) triptych fable, following a man without choice who tries to take control of his own life; a policeman who is alarmed that his wife, who was missing-at-sea, has returned and seems a different person; and a woman determined to find a specific someone with a special ability, who is destined to become a prodigious spiritual leader... The film has met with a mixed reception from the critics. That said, there does seem to be a general consensus of opinion about one thing: even if *Kinds Of Kindness* is an off-kilter affair unlikely to be to everybody's taste, it certainly makes for an absorbing watch.

Released Fri 28 June



A Quiet Place: Day One

CERT 15 (100 mins)

Starring **Lupita Nyong'o, Joseph Quinn, Djimon Hounsou, Alex Wolff, Malike Jubal, Thea Butler** Directed by **Michael Sarnoski**

The sightless aliens with supersharp hearing and an insatiable lust for blood are back for a third movie. This one's a prequel bereft of A-listers, but don't let that worry you - if the first two films in the franchise are anything to go by, another nailbitingly tense cinematic experience awaits.

Whereas the previous movies were set in remote areas, this one features the city streets of Brooklyn in New York as its backdrop. And being a prequel, it concerns

itself with what happened to civilisation *before* the start of the original film, which dedicated fans of the franchise will recall kicked off on 'Day 89'. Plenty of scope there, then, to tell the gripping tale of why Earth went silent after alien invasion..

"The biggest thing for me was that the first two films very much circle around a family and these people that have established relationships," director Michael Sarnoski told Entertainment Weekly. "I wanted to explore a little more of what it would look like for strangers to have to go through the end of the world together."

Released Fri 28 June



Horizon: An American Saga - Chapter 1

CERT tbc (181 mins)

Starring **Kevin Costner, Dale Dickey, Jena Malone, Sienna Miller, Sam Worthington, Michael Angarano** Directed by **Kevin Costner**

Having won a best director Oscar for 1990's *Dancing With Wolves* - and then watched on as the next film he helmed, *The Postman*, accumulated scorn and derision rather than plaudits and glittering prizes - Kevin Costner here takes the directorial chair for only the fourth time in his filmmaking career.

A multi-faceted chronicle, *Horizon: An American Saga* spans the four years of the Civil War and promises to take audiences on an emotional journey across a country in brutal conflict with itself.

Chapter two is being released later in the summer, with chapter three currently in the works and a fourth film scheduled to follow.

Released Fri 28 June





Image © Claudette Johnson / photo: Andy Keate

DOWN TO A FINE ART

A jewel in the crown of the Midlands art scene,
Birmingham's Barber Institute reopens its doors this month...



Birmingham's Barber Institute of Fine Arts reopens late June after almost nine months of building improvement works. This year's highly anticipated exhibitions include a first solo show in the Midlands from Turner Prize nominee Claudette Johnson, botanical drawings from the Victoria & Albert Museum in London, and a fresh look at Pre-Raphaelite paintings that's not to be sniffed at...

The Barber, situated in the green, airy surroundings of Birmingham University, has been closed for building improvement work for almost nine months. Its return has been highly anticipated by regular visitors, who will be looking forward to seeing beloved works from the collection again when the gallery reopens on Saturday 22 June.

The collection contains works by masters ranging from Botticelli to Rubens, and from the Pre-Raphaelites to the Impressionists, as well as esteemed 20th century artists.

"We've always been regarded as a small art gallery with a collection that punches far above its weight," says Andrew Davies, communications & marketing manager at the Barber. "It's like a mini National Gallery."

One of the interesting things about the Barber's permanent collection is its examples of unusual works by well-known masters. The two Rubens masterpieces, for instance, are not epic scenes of Biblical stories or classical history. Instead, there's a tranquil landscape of the artist's estate in Belgium, and an unassuming yet masterful portrait of a monk lost in his devotions.

The gallery will this year host exciting exhibitions of botanical illustrations from the V&A and well-loved Pre-Raphaelite works explored in a new way. There will also be a celebration of contemporary Turner Prize nominee Claudette Johnson.

The Johnson exhibition was confirmed by the Barber's current director, Professor Jennifer Powell, before the artist's shortlisting for the Turner Prize. Her work often takes the human figure as its subject, and in particular explores the experience of Black women, including herself. Entitled *Darker Than Blue*, the exhibition includes a loan from Coventry's Herbert Art Gallery and brand-new works created with the Barber show in mind. *Darker Than Blue* is Johnson's first solo show in the Midlands. Having studied fine art at Wolverhampton School of Art (now part of Wolverhampton University), she was a key member of the Blk Art Group, and her work will be exhibited at the Turner Prize show at Tate Britain in September, immediately after being on display at the Barber.

"It's wonderful that Claudette has been nominated and recognised for her incredible work," says Professor Powell. "It is really powerful, with striking and confident line work - and her figures always hold your gaze."

Opening along with the wider gallery this month, Johnson's exhibition is a fitting celebration to mark the completion of the

Barber's first phase of scheduled redevelopments.

The main change to the venue that regular visitors might notice is the complete redevelopment of the Lady Barber exhibition gallery, named after the venue's founder. The exhibition space, originally a painting store and technicians' workshop, has been taken back to the bare bricks and rebuilt. Not originally created for use as a gallery, the room now contains state-of-the-art lighting and air-conditioning systems, as is appropriate for a gallery that frequently houses priceless works.

The conversion of this space in a Grade-1 listed building has been handled with care, creating an unmistakably modern gallery that is also in keeping with the four main historic picture galleries.

Another thing eagle-eyed visitors might notice is a change to the way Renaissance paintings and sculptures are exhibited in the Green Gallery. Previously displayed chronologically, the Barber has been working for over a year with Chloe Church, National Gallery Curatorial Trainee, who developed an alternative way of looking at the paintings.

The Green Gallery will now group works by theme within the broad chronological pattern, with bay sections devoted to shared subjects such as devotional works, portraiture, the influence of ancient Greece and Rome, and Venetian art. The re-grouping gives context to different works, and the opportunity to explain why those subjects were repeatedly chosen.

The second phase of redevelopment will begin in early 2025, so art fans in the Midlands are encouraged to make the most of the Barber's exciting programme before the next wave of building improvement begins.

The focus of the redevelopment will swap from improving the gallery spaces to enhancing the visitor experience, and retrofitting a ventilation system into the Barber's elegant concert hall.

The original 1930s Art-Deco concert hall is situated in the middle of the building, without external ventilation, so the building works will include a new system which extracts 'used' air from the hall and pumps in fresh air.

A frequent problem when working in historic buildings is the need to make sure they are accessible to as many people as possible. As a 1930s building, with steps up to the main entrance, the Barber can prove hard to navigate for some. There is step-free rear access, but the works scheduled for 2025 will

create an easier journey into the building for visitors with additional mobility needs.

Before the final stage of redevelopment begins, the Barber's 2024 programme has much to offer. Lunchtime gallery talks, open to everyone, will begin again - the first being an introduction to Claudette Johnson's exhibition on Wednesday 26 June. There's also a programme for younger audiences, including a family festival in August, upholding Lady Barber's mission to promote 'the study and encouragement of art and music'.

Other exhibitions include *The Hidden Lives Of Plants*, a selection of visually lovely botanical watercolours, drawings and prints from London's V&A Museum, and *Women In Power*, assembled from the Barber's extensive coin collection.

Autumn's exhibition, *Scent And The Art Of The Pre-Raphaelites*, meanwhile, will explore largely forgotten ideas about smell in the 19th and early 20th century. Apparently, there was actually a belief in Victorian times that you could smell a rainbow - it smelt like spring flowers and meadows. One of the paintings to be lent to the show by Birmingham Museum & Art Gallery - *The Blind Girl*, by Millais - depicts two young girls breathing in the scent of the rainbow.

The exhibition is going to be a multi-sensory experience, complete with concealed machines pumping spritzes of scent in the gallery at the press of a button.

And this isn't the only multi-sensory installation in the upcoming season either - as Professor Powell explains: "In Claudette's show there will be a sound installation by Trevor Mathison, who's a contemporary sound artist. Trevor has created a soundscape that combines aspects of the Barber experience - the echoes and sounds of the galleries - with the sound of Claudette working in the studio.

"It's the first time that Claudette and Trevor have ever worked together as well, and it's the first time that Claudette has had this sound aspect in an exhibition.

"We can't wait to welcome visitors back to the Barber and to our exhibitions."

.....

The Barber Institute of Fine Arts reopens on Saturday 22 June, along with the exhibitions Claudette Johnson: *Darker Than Blue* and *The Hidden Lives Of Plants*. *Scent And The Art Of The Pre-Raphaelites* opens on Friday 11 October

THE
BARBER
INSTITUTE OF
FINE ARTS

 UNIVERSITY OF
BIRMINGHAM

Claudette Johnson

Darker Than Blue

22 June - 15 September 2024

**FREE
ADMISSION** Barber.org.uk
Visit by train:
University station

© Claudette Johnson / The Courtauld. Photo: David Barber.



© Victoria and Albert Museum, London

The Hidden Lives of Plants

ALSO
SHOWING

BOTANICAL ILLUSTRATIONS
FROM THE V&A

22 June - 10 November 2024

Developed in collaboration with the V&A

V&A



THE COVENTRY MUSIC MUSEUM
<http://www.covmm.co.uk>

Our Town

OUR NEW EXHIBITION

"A TRIBUTE TO
THIS TOWN
THROUGH
THE EYES OF A
SUPPORTING ARTIST"
INCLUDES MEMORABILIA AND
COSTUMES FROM THE SHOW

ALSO
THE
"STILL WORKING FOR THE RAT
RACE RODDY RADIATION WALL"

KIDS GO
FREE

With thanks to
Coventry City Council

PLUS OUR NEW
TERRY HALL TRIBUTE

RISE IN THE ACTUAL
GHOST TOWN CAR

EMAIL: [TENCTON@HOTMAIL.COM](mailto:tencton@hotmail.com) OR CALL 07971171441
THE COVENTRY MUSIC MUSEUM, THE 2-TONE VILLAGE, UNIT 3, RD 74-80 WALSGRAVE RD, COVENTRY, CV2 4ED



What's On



MEDIA GROUP

**STAY IN
THE LOOP!**

SIGN UP TO OUR FORTNIGHTLY
E-NEWSLETTER TO RECEIVE THE
LATEST ENTERTAINMENT NEWS
FROM ACROSS THE REGION -
AS WELL AS **COMPETITIONS**
AND **OFFERS** FOR THEATRES,
GIGS, DINING OUT AND MORE...

THIS WEEK: Birmingham Festival 23 brings
10 days of fun to the city

SIMPLY SCAN THE QR TO SIGN UP TODAY

Visual Arts previews from around the region

**Acts Of Creation: On Art And Motherhood**

Midlands Arts Centre (MAC), Birmingham, Sat 22 June - Sun 29 September

A Hayward Gallery Touring exhibition that 'plunges into the joys and heartaches, mess, myths and mishaps of motherhood', Act Of Creation features more than 100 artworks - 'from the feminist avant-garde to the present day'.

The exhibition explores the lived experience of being a mum, offering a 'complex account' that engages with contemporary concerns about gender, caregiving and reproductive rights.

Collecting Coventry

Herbert Art Gallery & Museum, Coventry, until Sun 27 April 2025

Seventy-five years of collecting is being celebrated in this brand-new and long-running exhibition.

Featuring a selection of objects dating from the founding of the Herbert Art Gallery in 1949 through to the present day, the show is being presented across four of the Herbert's rooms.

Featured objects and curiosities include a 4.5 billion-year-old meteorite, a Covid testing kit, LS Lowry's famous painting of Ebbw Vale and a number of items being displayed for the very first time.

**Summer Exhibition**

Warwick Arts Centre, Coventry, until Sun 23 June

Coventry's Warwick Arts Centre is hosting three concurrent exhibitions this month... Bologna-based Rwandan artist Francis Offman's Economics Of Painting showcases canvases that tell stories of friendship, conversation and travel... Swiss creative Nicole Bachmann's There Are Tides In The Body is a new film commission. Set across two locations in Kent and Spon End in Coventry, the film considers the body as a site of knowledge by using movement and voice to 'embody vocabulary' and create new meaning... Completing the trio of exhibitions, Activate/Assemble/Amplify contemplates the creative future of Coventry's children and young people. Sharing artworks and performances made throughout the year as part of youth and schools projects, the exhibition explores the participants' vision for themselves and their city.

Jaskirt Dhaliwal-Boora

Ikon Gallery, Birmingham, Wed 12 - Sun 23 June

This collaboration between Ikon and local mental-health consortium Living Well features photographs taken by Birmingham-born artist Jaskirt Dhaliwal-Boora.

Jaskirt has been working with local communities, taking photographic portraits against the backdrop of the city's green spaces, and exploring the benefits of nature in terms of people's health. After its stay at Ikon, the exhibition heads to the city's Selly Oak district, where it will be showcased at the Living Well Consortium and Birmingham Mind venue Grounded - a community-focused wellbeing cafe & hub.

Abbey Road Music Photography Awards

Symphony Hall, Birmingham, until Fri 14 June

Symphony Hall's collaboration with the iconic Abbey Road Studios continues this month.

Abbey Road is, of course, the London-located purpose-built recording studio made famous by its association with The Beatles.

For the past three years, the studio has run the Music Photography Awards. The initiative is designed to champion emerging and undiscovered young photographers, and to celebrate 'the unforgettable, unique and unsung musical moments' from the previous 12 months.

As part of the collaboration, Symphony Hall is hosting a month-long exhibition of work by the 2023 Music Photography Awards nominees and winners.

Across nine categories, including 'Live', 'Icon', 'Undiscovered' and 'Hip Hop 50', the exhibition offers a unique opportunity to view the photographs in a distinctive setting.

A series of masterclasses and panel talks - led by local, established music photographers and Music Photography Awards alumni - also runs across the month, in addition to special performances by emerging Birmingham-based musicians.

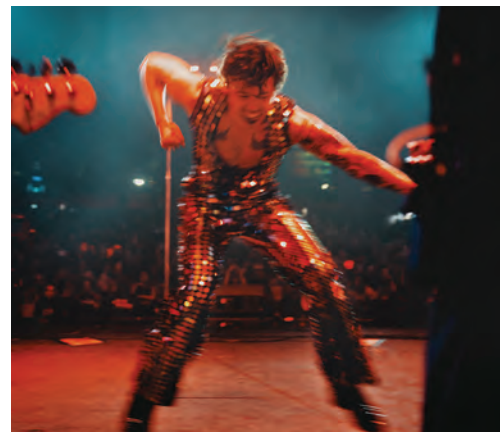
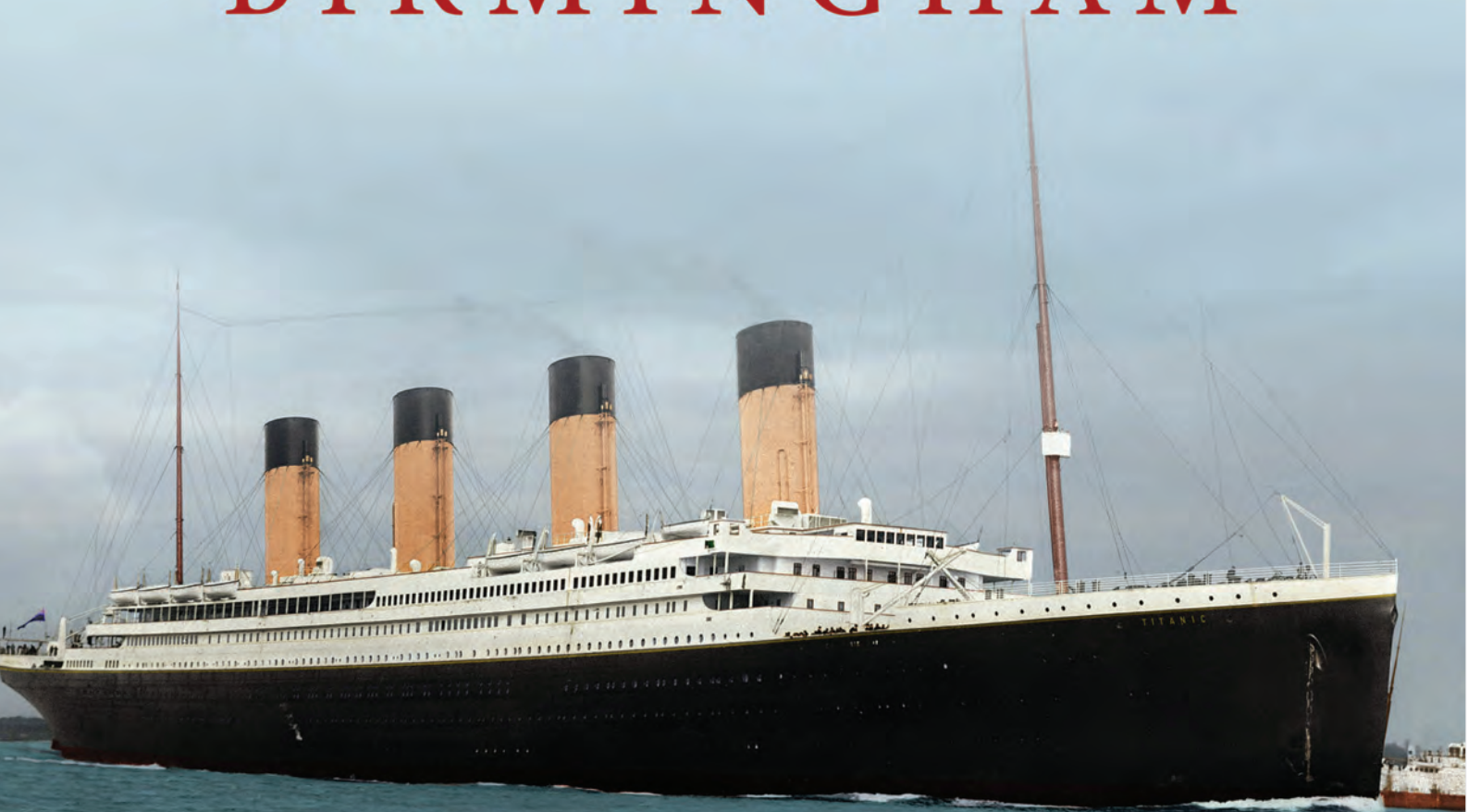


Image: Harry Styles by Anthony Pham (Music Moment of the Year award winner, 2023)

TITANIC

—EXHIBITION—

BIRMINGHAM



BOOK NOW:

WWW.TITANICBIRMINGHAM.CO.UK

JULY 27 - AUG 25
2024



nec
birmingham

Events previews from around the region



BBC Good Food Show Summer NEC, Birmingham, Thurs 13 - Sun 16 June

Boasting tasty food, mouthwatering recipes, and in-the-kitchen entertainment served up by some of the nation's most celebrated chefs, the summer edition of the BBC Good Food Show makes a welcome return mid-month.

TV chefs including Michel Roux (pictured), James Martin and Nadiya Hussain will be

sharing their culinary skills and cooking live on stage.

The show's ever-popular shopping village returns too, providing visitors with plenty of opportunity to 'taste, try and buy' a wide range of delicious produce from an impressive selection of food & drink suppliers.



BBC Gardeners' World Live NEC, Birmingham, Thurs 13 - Sun 16 June

Green-fingered visitors to BBC Gardeners' World Live will, as usual, find plenty to delight them.

As well as taking ideas and inspiration from the show gardens and displays, attendees can also pick up tips and tricks from TV gardeners including Monty Don, Frances Tophill and Adam Frost.

Meanwhile, the Floral Marquee and Plant

Village will boast a vast array of top-quality nurseries from which to make purchases for your next gardening project.

And if all that gardening leaves you peckish, be sure to check out the neighbouring BBC Good Food Show Summer (see above), entry to which is included with all tickets to Gardeners' World Live.

Weston Park Air Show International

Weston Park, Shropshire, Fri 14 - Sun 16 June

Model and full-sized aircraft taking to the skies, off-road and circuit model-car racing, model boats and helicopters, trade stands, food & drink stalls and a craft fair all feature among the attractions at this three-day show. Youngsters are catered for too, courtesy of a funfair, and there's live music to enjoy in the evenings.

Pyrotechnics, gliders and fireworks light up the sky on the Saturday night.



Warwickshire Game & Country Fair

Wroxall Park, nr Warwick, Sat 22 & Sun 23 June

Set within the surroundings of Wroxall Park, Warwickshire Game & Country Fair returns this month.

Visitors can enjoy a mixture of main-arena attractions running throughout the day - including falconry and scurry driving - alongside a host of smaller country sports arenas and workshops.


The show's World of Dogs attraction features a variety of dog displays, the Shooting Village provides visitors with the opportunity to have a go at clay shooting, and the Craft Village offers a wide variety of items to buy. The fair's popular Chainsaw Carving Area is back too, featuring daily 30-minute speed carves during which all chainsaw carvers race against the clock to produce a carving that is then sold at auction.



A decorative border surrounds the central text. On the left, there is a vertical strip of green foliage with various pink and white flowers. On the right and top, there is a border of fresh fruit including strawberries, raspberries, blackberries, and macarons. At the bottom, there are more flowers and vegetables like carrots.

Two shows, one ticket, a great day out!

BBC
Gardeners' World **Live**
&
goodFOOD
SHOW SUMMER

Shows sponsored by:  **LEXUS**

13-16 June 2024 | NEC Birmingham

**BOOK
NOW**

Save 15%* on standard tickets when you quote WHAT15 by 6 June
bbcgardenersworldlive.com | goodfoodshow.com

*Valid on adult/Over 65s standard entry tickets only. Not valid on VIP, 2-day tickets, added extras, or with any other offer. Offer ends 23:59pm on 6 June 2024. £3.95 transaction fee per advance order. Not all experts appear on all days, see website for details. Details correct at time of print. The Gardeners' World logo is a trademark of the BBC. © BBC. The Good Food trade mark is used under license from Immediate Media Company London Limited. Organised and presented by River Street Events at Immediate Media.

Events previews from around the region



The World of Park & Leisure Homes Show

NAEC Stoneleigh, Warwickshire, Fri 28 - Sun 30 June

As the biggest event of its kind in the UK, The World of Park & Leisure Homes Show provides a fantastic opportunity to discover and consider a leisure lifestyle. Visitors can view more than 50 state-of-the-art leisure lodges and residential park

homes, check out the latest designs and innovations, and discover affordable luxury. There's also the chance to pick up some expert advice and find out more from people already enjoying the leisure lifestyle.



Step Back To The 1940s

Severn Valley Railway, Bewdley, Nr Kidderminster, Sat 29 & Sun 30 June and Sat 6 & Sun 7 July

A taste of all things vintage comes to the Severn Valley Railway this month, as the 16-mile line and all of its stations host a festival of 1940s-themed fun.

Taking place across two weekends, the event features an array of attractions and entertainment, including 1940s singers and dancers, a wartime wedding, and jitterbug sessions. There's even the chance to hear a rousing speech by Winston Churchill!

Vintage traders will be selling their wares at the Engine House at Highley, with a flypast from the Lancaster Bomber on the Sunday of both weekends. New for 2024 is the chance to meet Herr Flick, Helga and Lieutenant Gruber from the much-loved BBC TV series 'Allo 'Allo!.

Big Band shows take place at Kidderminster station on the Saturday evening of both weekends.

RAF Cosford Air Show

RAF Museum Midlands, Cosford, Sun 9 June

The RAF Cosford Air Show returns this month with an action-packed flying display that features powerful demonstrations of modern military aircraft from the Royal Air Force and international military partners. Participants include F35 Lightning from 617 Sqn, the RAF Typhoon Display Team and the ever-popular Red Arrows.

On-the-ground entertainment comes in the form of, among other attractions, static displays of aircraft, a Vintage Village with reenactors, and STEM hangars offering family-friendly interactive activities.



Classic & Vintage Commercial Show

British Motor Museum, Gaydon, Warwickshire, Sat 8 & Sun 9 June

Take a nostalgic trip back in time by checking out hundreds of pre-2003 commercial vehicles at British Motor Museum this month. The display features Morris Minor and Ford Transit vans, familiar marques of the 1950s and 60s - including Fodens, ERFs, AECs and Leylands - and Volvos and Scania's, which took over the roads of Britain from the 1970s onwards.

Visitors can also take advantage of a large autojumble and, within the museum, cast their eye over two model shows.



THE COUNTRYSIDE COMES TO LIFE AT...

WARWICKSHIRE GAME & COUNTRY FAIR

Saturday & Sunday

June 22nd & 23rd • 10am-6pm



ALL DAY ARENA ENTERTAINMENT • WORLD OF DOGS
FALCONRY & FISHING • SHOOTING VILLAGE • FAMILY ENTERTAINMENT
CRAFT VILLAGE • FOOD SHOW & LOTS OF COUNTRY SPORTS TO TRY



Come and visit us ...

at this stunning venue for an action packed event

Adults: £18.00 Over 65s: £17.00 Children: £6.00

BOOK YOUR TICKETS ONLINE NOW

www.livingheritagecountryshows.com/tickets

WROXALL PARK, WROXALL, NEAR WARWICK CV35 7NB

Tel 01283 820548

www.livingheritageevents.co.uk

Step back to the
1940s

SATURDAY 29 &
SUNDAY 30 JUNE,
SATURDAY 6 &
SUNDAY 7 JULY

THE BIG BAND SHOW
A festival of 1940s music each Saturday night!

SEVERN VALLEY RAILWAY

PRE-BOOK TICKETS AND SAVE AT SVR.CO.UK

ROYAL THREE COUNTIES SHOW
14-16 JUNE 2024

in partnership with **HOWDEN**

OUTDOOR FAMILY ACTIVITIES
FOOD & DRINK FESTIVAL
LIVE ARENA DISPLAYS
OVER 6000 ANIMALS TO SEE
KIDS GO FREE!

GREAT CELEBRITY LINE UP INCLUDING
MATT BAKER MBE (SAT)
KALEB COOPER (SUN)

A BUMPER CROP OF FARMING, FOOD & FAMILY FUN
For Worcestershire, Herefordshire, Gloucestershire and beyond

BOOK NOW
royalthreecounties.co.uk 0344 338 5400
Advance tickets: Adults £23* | Under 16s free
Three Counties Showground, Malvern, WR13 6NW
* + £0.85 ticketing fee per ticket

@3CountiesShows

Events previews from around the region



Royal Three Counties Show

Three Counties Showground, Malvern, Fri 14 - Sun 16 June

Hailed as one of the UK's biggest celebrations of the great British countryside, the Royal Three Counties Show offers a long weekend of animal encounters, interesting displays and expert agricultural insights. Special guests at this year's get-together include Bake Off winner Matty Edgell, pop star-turned-farmer JB Gill, Countryfile's Matt

Baker and Clarkson's Farm's Kaleb Cooper. Other highlights include The Future of Farming Zone - hosting a line-up of informative talks and Q&A sessions - the Food & Drink Theatre, the Equine Village, the Countryside Arena and Adventure Avenue.



Cheltenham Science Festival

Montpellier Gardens, Cheltenham, Tues 4 - Sun 9 June

Cheltenham Science Festival makes a welcome return this month, providing a platform for scientists, futurologists and thought-leaders to help make sense of the world around us. Visitors are guaranteed a creatively curated programme to spark their curiosity, with lots of free family activities available to enjoy

alongside a range of ticketed events. Highlights include FameLab - the largest public-facing science communication competition and training programme in the world - and Voicebox - a visually striking, Instagrammable space presenting free events for young talent.

Potfest By The Lake

Compton Verney, Warwickshire, Fri 21 - Sun 23 June

An artisan ceramics market showcasing the work of 80 of the UK's finest ceramics makers, Potfest returns to Compton Verney for a fourth year and has become a highlight in every potter's calendar. Work by local and continental makers also features.



Comic Con Midlands

Telford International Centre, Shropshire, Sat 15 & Sun 16 June

Celebrating all things pop culture, Comic Con Midlands heads to Telford this month. Numerous familiar faces from movies, TV, streaming, gaming, anime and sports entertainment will be in attendance, including Lucy Lawless, Jodie Whittaker and Alyssa Mialno.

The show also features: unique props and set builds; cosplayers strutting their stuff on stage; retro and modern gaming areas; and trader and artist zones.

Adventure Bike Rider Festival 2024

Ragley Hall, Warwickshire, Fri 28 - Sun 30 June

Back for its fifth year, this popular event brings together the adventure motorcycling community for three action-packed days. The festival features 40km of exclusive on-site trails, guest speakers across four stages, the world's biggest motorcycle manufacturers and over 130 exhibitors.

Away from the biking, attractions include more than 20 live bands and over 50 food vendors.





Shropshire Horticultural Society
Charity Number: 501564



Shrewsbury Flower Show

Friday 9th and Saturday 10th August 2024

SO MUCH MORE THAN A FLOWER SHOW

FRIDAY 9TH & SATURDAY 10TH
AUGUST 2024

TICKETS ON SALE NOW

FREE ENTRY FOR KIDS 15 AND UNDER WHEN
ACCOMPANYING A PAYING ADULT



For further information call 01743 234050 www.shrewsburyflowershow.org.uk

*Your week-
by-week
listings guide*
June 2024

thelist



In The Night Garden Live - Belgrade Theatre, Coventry - Fri 21 & Sat 22 June

Music I Comedy I Theatre I Dance I Events I Visual Arts I and more!

What's On

Sat 1 - Sun 9 June



The Resonate Festival of Arts & Culture - University of Warwick
Sun 2 June

Mon 10 - Sun 16 June



Joe Dolman - The Royal Pug, Leamington Spa
Fri 14 June

Mon 17 - Sun 23 June



The Telling: I Spie - Stratford Play House, Stratford-upon-Avon
Tues 18 June

Mon 24 - Sun 30 June



Saije - Temperance, Leamington Spa
Tues 25 June

VISUAL ARTS IN THE MIDLANDS

Birmingham Museum & Art Gallery

VICTORIAN RADICALS Exhibition presenting works by 19th-century artists, designers & makers, from the Pre-Raphaelites to the arts & crafts movement, until Thurs 31 Oct

Compton Verney, Warwickshire

LANDSCAPE AND IMAGINATION: FROM GARDENS TO LAND ART Exhibition, guest-curated by Professor Christina Payne, using a range of loaned paintings by major artists to investigate the relationship between art, gardens and landscape, until Sun 16 June

A SPIRIT INSIDE A selection of works from the Women's Art Collection and the Ingram Collection, exploring how women and non-binary artists have grappled with the notion and sense of 'spirit', until Sun 1 Sep

REUNITED: THE LAMENTATION ALTERPIECE After 30 years of its central panel being housed in the National Gallery of Scotland's collection, this is the chance to see a rare masterpiece, reunited, until Fri 28 Feb 2024

Coventry Music Museum

OUR TOWN A tribute to the This Town TV series through the eyes of a supporting artist, including memorabilia and costumes. The museum also features a new tribute to The Specials' Terry Hall

Herbert Museum & Art Gallery, Coventry

AFTER THE END OF HISTORY: CONTEMPORARY WORKING-CLASS PHOTOGRAPHY, 1989-2004 A collection of photography, curated by Johnny Pitts, until Mon 16 June

COVENTRY'S JEWISH COMMUNITY Exhibition exploring a community history that dates back to the 12th century, until Mon 30 Sept 2024

Mead Gallery, Warwick Arts Centre, Coventry

FRANCIS OFFMAN: ECONOMICS OF PAINTING Bologna-based Rwandan artist Offman uses found materials in collage to tell stories of friendship, conversation and travel, until Sun 23 June

NICOLE BACHMANN: THERE ARE TIDES IN THE BODY A new film that considers the body as a site of knowledge, until Sun 23 June

ACTIVATE/ASSEMBLE/AMPLIFY The venue's Youth Leadership Collective presents an interactive exhibition that amplifies their voices and

explores their vision for themselves and their city, until Sun 23 June

Rugby Art Gallery

RUGBY COLLECTION: SELECTED BY CHRIS ORR Exhibition of works from the gallery's own collection, selected by Orr in conjunction with his visiting exhibition, until Sat 8 June

A QUESTION OF TIME Compilation of work from final-year students studying fine art at Coventry University. Students' work will be displayed in rotation, until Sat 7 Sept

JASON AND HIS ARGONAUTS Exhibition of works from 'Super Cool Digital Artist' Jason Wilsher-Mills, including 2D images, 3D sculpture, and digital surprises. Sat 22 June - Sat 7 Sept

Leamington Spa Art Gallery & Museum

LEAMINGTON SPA AND THE BLACK ATLANTIC Exhibition highlighting Leamington's historic links to exploitation and enslavement, the legacy of which is still visible in the town today, until Sun 15 Sept

Nuneaton Museum & Art Gallery

NUNEATON FESTIVAL OF ARTS WINNERS Exhibition of works by the winners of this year's festival, Sat 8 June - Sat 20 July

Elsewhere

BEAUTIFUL OPEN SPACES Solo exhibition by local artist & art lecturer Vicky Chapple comprising acrylic paintings inspired by Worcestershire's Confetti Fields, until Mon 10 June, The Courtyard Gallery, The Core, Solihull

INTERNATIONAL GARDEN PHOTOGRAPHER OF THE YEAR EXHIBITION A selection of photographs embracing the word 'garden' in its broadest definition, until Sat 29 June, The Birmingham Botanical Gardens

FESTIVAL OF BLOSSOM Origami blossom installation featuring hundreds of handcrafted paper blossoms made by visitors, volunteers and staff, until Sun 23 Feb 2025, Croome Park, Worcestershire

STEP ASIDE AND SEE An exhibition of works by contemporary oil painter Nicola Currie, artist-in-residence at Spetchley Park Gardens. Sat 15 - Sun 30 June, Worcester Cathedral

TRANSITIONS: THE IMPACT OF INNOVATION Exhibition exploring the technologies that are bringing cars into the future, until summer 2024, British Motor Museum, Gaydon



The Smashing Pumpkins + Weezer - Utilita Arena Birmingham

Gigs

RIDING THE LOW + JOSEPH HOOLIGAN + WILF SPIV Sat 1 June, Hare & Hounds, Birmingham

JAY SEAN + VÉYAH + KAYAM Sat 1 June, O2 Institute, Birmingham

THE ROSADOCS Sat 1 June, O2 Institute, Birmingham

YES Sat 1 June, Symphony Hall, B'ham

CLOUDBUSTING - THE MUSIC OF KATE BUSH Sat 1 June, The Roses Theatre, Tewkesbury

LUKE CONCANNON + STEPHANIE HOLLENBERG Sat 1 June, Temperance, Leamington Spa

HARRY BROWN Sat 1 June, The Royal Pug, Leamington Spa

BUDDY HOLLY'S DANCE PARTY Sat 1 June, Stratford Playhouse

GORDON GILTRAP & CARRIE MARTIN Sat 1 June, The Henrician, Evesham

MAET LIVE AND THE NEVER NEVERLAND EXPRESS Sat 1 June, Queens Hall, Nuneaton

8 FOOT UNDER Sat 1 June, Queens Hall, Nuneaton

RICHARD DIGANCE Sat 1 June, The Priory Theatre, Kenilworth

WALK LIKE A MAN - THE MUSIC OF FRANKIE VALLI & THE FOUR SEASONS Sat 1 June, The Benn Hall, Rugby

EXPLOSIVE LIGHT ORCHESTRA Sat 1 June,

Marrs Bar, Worcester

CONSERVATOIRE FOLK ENSEMBLE Sat 1 June, Huntingdon Hall, Worcester

TAYLOR SWIFT TRIBUTE Sat 1 June, Swan Theatre, Worcester

NORTHERN LIVE Sat 1 June, Palace Theatre, Redditch

THE SIGNATURES Sat 1 June, Malvern Theatres

THE COVER DUCKS Sat 1 June, 45Live, Kidderminster

PICTISH TRAIL Sat 1 June, West Malvern Social Club

NIGHT THIEVES + CRYSTALLINE Sun 2 June, Devil's Dog, Birmingham

DANNI NICHOLLS Sun 2 June, The Kitchen Garden, Birmingham

SKA TRAIN Sun 2 June, Temperance, Leamington Spa

MIRANDA SYKES Sun 2 June, The Fleece Inn, Bretforton, Nr Evesham



MYSTERIOUS BLUES Sun 2 June, Queens Hall, Nuneaton

ANTA + SANS FROID + MT YONDER Sun 2 June, Drummonds, Worcester

BAD MANNERS Sun 2 June, 45Live, Kidderminster

THE BOOTLEG SHADOWS Sun 2 June, Civic,

Stourport

REBECCA FERGUSON + TOM SEALS + ELOISE VIOLA Sun 2 June, The Civic at The Halls, Wolverhampton

SEAN FINDLAY & ADAM SMITH Mon 3 June, Hare & Hounds, B'ham

ALYSSA BONAGURA Mon 3 June, Hare & Hounds, Birmingham

MEMORIAL Tues 4 June, Hare & Hounds, B'ham

RUBY WATERS Tues 4 June, The Sunflower Lounge, Birmingham

MARK HARRISON & CHARLES BENFIELD Tues 4 June, The Roses Theatre, Tewkesbury

FIONA BEVAN + ADAM BEATTIE Tues 4 June, Temperance, Leamington Spa

THOSE FOLK Tues 4 June, Regal, Tenbury Wells

SWIM DEEP + PRIMA QUEEN Wed 5 June, Hare & Hounds, Birmingham

STATUS QUO + LAURENCE JONES Wed 5 June, The Civic at The Halls, Wolverhampton

JODIE NICHOLSON Thurs 6 June, The Sunflower Lounge, Birmingham

CHRIS DISTEFANO Thurs 6 June, O2 Institute, Birmingham

RED + LANDSDOWNE Thurs 6 June, O2 Academy, Birmingham

SPIERS AND BODEN Thurs 6 June, Midlands Arts Centre (mac), Birmingham

THE SANDY DENNY PROJECT Thurs 6 June,

Saturday 1 - Sunday 9 June

Huntingdon Hall,
Worcester

LET'S ROCK THE 70S
Thurs 6 June, Swan
Theatre, Worcester

JOHNNY CASH
ROADSHOW Thurs 6
June, Palace Theatre,
Redditch

JOOLS HOLLAND & HIS
RHYTHM & BLUES
ORCHESTRA Thurs 6
June, Malvern Theatres



MILES HUNT Fri 7 June,
Hare & Hounds, B'ham

COUNTRY FEST Fri 7
June, O2 Institute,
Birmingham

ONLY THE POETS Fri 7
June, O2 Academy,
Birmingham

BLACK CILICE +
ABDUCTION + SANGUINE
RELIC Fri 7 June, The
Flapper, Birmingham

MASCA Fri 7 June, The
Victoria, Birmingham

COLLABRO Fri 7 June,
Symphony Hall, B'ham

FANNA-FI-ALLAH SUFI
QAWWALI Fri 7 June,
Birmingham Town Hall

THE SMASHING
PUMPKINS + WEEZER Fri
7 June, Utilita Arena
Birmingham

CHANTEL MCGREGOR Fri
7 June, Temperance,
Leamington Spa

HELLO AGAIN - THE NEIL
DIAMOND SONGBOOK Fri
7 June, Stratford
Playhouse

VOYEAKS Fri 7 June, The

Tin at The Coal Vaults,
Coventry

AMY WINEHOUSE BY
CANDLELIGHT Fri 7 June,
The Rialto, Coventry

JILTED GENERATION - THE
PRODIGY TRIBUTE Fri 7
June, hmv Empire,
Coventry

FLASHBACK Fri 7 June,
Queens Hall, Nuneaton

ABBA SENSATION Fri 7
June, Regal, Tenbury
Wells

STEREOHOLICS + ERICA
JEAN Fri 7 June,
Drummonds, Worcester

CLIVE JOHN Fri 7 June,
Huntingdon Hall,
Worcester

ULTIMATE COLDPLAY Fri 7
June, Malvern Cube

JOLENE - THE DOLLY
PARTON EXPERIENCE Fri 7
June, Civic, Stourport

JOOLS HOLLAND & HIS
RHYTHM & BLUES
ORCHESTRA Fri 7 June,
Wolverhampton Grand
Theatre

DARREN WHARTON'S
RENEGADE Sat 8 June,
O2 Institute, B'ham

ROSA CAELUM Sat 8
June, O2 Institute,
Birmingham

THE SOUTHMARTINS Sat
8 June, O2 Academy,
Birmingham

BHANGRA SYMPHONICA
Sat 8 June, Birmingham
Town Hall

BRITPOP CLASSICAL Sat
8 June, Symphony Hall,
Birmingham

PET SHOP BOYS Sat 8
June, Utilita Arena
Birmingham

BOOGALOO BABES Sat 8
June, The Core
Theatre, Solihull

JO CARLEY AND THE OLD

DRY SKULLS Sat 8 June,
Temperance,
Leamington Spa

LEIGHTON TONGUE Sat 8
June, The Royal Pug,
Leamington Spa

BOWIE VS PRINCE Sat 8
June, The Rialto,
Coventry

DIRTYJACKDC Sat 8
June, Arches Venue,
Coventry

BLACK VOICES: SONGS OF
NINA SIMONE PLUS EMILY
SAUNDERS Sat 8 June,
Warwick Arts Centre,
Coventry

SUMMER PUNCH Sat 8
June, Coventry Building
Society Arena

COLDPLACE Sat 8 June,
The Henrician,
Evesham

THINK-182 + COURTNEY
REDDY AS AVRIL LAVIGNE
Sat 8 June, Queens
Hall, Nuneaton

SKA NIGHT Sat 8 June,
Marrs Bar, Worcester

THE ULTIMATE
CELEBRATION OF CARLOS
SANTANA Sat 8 June,
Swan Theatre,
Worcester

VULGAR DISSECTION +
ELIMINATE THE MIDDLE
CLASS + DESECRATOR
Sat 8 June, Paradiddles
Cafe, Worcester

RANAGRI Sat 8 June,
West Malvern Social
Club

THIRTY SECONDS TO
MARS Sun 9 June,
Utilita Arena
Birmingham

STONE FOUNDATION Sun
9 June, Queens Hall,
Nuneaton

THE SIMON AND
GARFUNKEL STORY Sun
9 June, Swan Theatre,
Worcester

Classical Music

WORCESTERSHIRE SYMPHONY

ORCHESTRA Featuring Keith Slade
(conductor), Sally Alexander & Kate
Moon (cellos). Programme includes
works by Elgar, Vivaldi & Bach, Sat 1
June, Worcester Guildhall

THE JENNY LIND SINGERS Featuring
Lynne Lindner (conductor), Anwen
Mai Thomas (harp) & Tim Sidford
(piano). Programme includes works
by Elgar, Quartel, Liz Dillnot Johnson,
Holst & more..., Sat 1 June,
Worcester Guildhall

THE ELGAR CHORALE Featuring Piers
Maxim (conductor). Programme
includes works by Coleridge-Taylor &
Elgar, Sat 1 June, St. Martin in the
Cornmarket, Worcester

ELGAR FESTIVAL: GALA CONCERT
Featuring Kenneth Woods
(conductor), Zoë Beyers (violin -
pictured) & April Fredrick (mezzo
soprano). Programme includes works
by Elgar & Elcock, Sat 1 June,
Worcester Cathedral



ELGAR FESTIVAL: PIANO QUINTET
Featuring Zoë Beyers (violin),
Suzanne Casey (violin), Carl Hill
(viola), Joely Koos (cello), Mike
Escree (bass) & Daniel King Smith
(piano). Programme includes works
by Elgar & Elcock, Sun 2 June, Henry
Sandon Hall, Worcester

NATIONAL OPEN YOUTH ORCHESTRA
Programme includes works by
Meredith, Vivaldi, Nyman & more...
Sun 2 June, Birmingham Town Hall

BIRMINGHAM PHILHARMONIC
ORCHESTRA: GAELIC VISIONS Featuring
Michael Lloyd (conductor).
Programme includes works by
MacCunn, Arnold, Stanford & Beach,
Sun 2 June, Royal Birmingham
Conservatoire

CBSO: FINAL SYMPHONY II Featuring
Eckehard Stier (conductor) & Mischa
Cheung (piano). Programme
includes music from Final Fantasy,
Sun 2 June, Symphony Hall, B'ham

THOMAS TROTTER ORGAN CONCERT
Featuring Simon Gledhill (organ).
Programme includes works by
Schubert, Rutter, Benjamin &
Moszkowski, Mon 3 June,
Birmingham Town Hall

SHAUN WARD ORGAN RECITAL Tues 4
June, Hereford Cathedral

CBSO: VESPERS OF THE BLESSED EARTH
Featuring Ludovic Morlot
(conductor), CBSO Chorus &
University of Birmingham Voices.

Programme includes works by John
Luther Adams & Sibelius, Thurs 6
June, Symphony Hall, Birmingham

DAVID SAINT ORGAN RECITAL

Programme includes works by J.S.
Bach, C. V. Stanford, Franck &
Monnikendam, Thurs 6 June, St
Chad's Cathedral, Birmingham

CBSO CENTRE STAGE: NORDIC TO NEW
WORLD Featuring the Career
Accelerator String Fellows.

Programme includes works by the
Danish String Quartet, Pereira &
Price, Fri 7 June, CBSO Centre,
Birmingham

SIMON WATTERTON PIANO RECITAL
Programme tbc, Fri 7 June, St Mary's
Church, Warwick

BRODSKY QUARTET: SHOSTAKOVICH
QUARTET CYCLE Featuring Krysis
Osostowicz & Ian Belton (violins),
Paul Cassidy (viola) & Jacqueline
Thomas (cello). Programme
comprises Dimitri Shostakovich's
complete string quartet cycle,
performed in five concerts, over three
days, Fri 7 - Sun 9 June, Malvern
Theatres

STRATFORD CONCERT 50th Anniversary
performance, Sat 8 June, Stratford
Playhouse

UNIVERSITY BRASS BAND REUNION
Featuring Stuart Birnie & Stephen
Roberts (conductors). Programme
includes old favourites and classics
from the brass band repertoire, Sun 9
June, Elgar Concert Hall, Bramall
Music Building, University of
Birmingham

BIRMINGHAM PHILHARMONIC
ORCHESTRA: GAELIC VISIONS Featuring
Michael Lloyd (conductor).
Programme includes works by
MacCunn, Arnold, Stanford & Beach,
Sun 9 June, Leominster Priory

Comedy

BRENNAN REECE, DAVE LONGLEY,
ROBERT WHITE & RAJ POOJARA Sat 1
June, The Glee Club, Birmingham

ED GAMBLE Sat 1 June, The
Alexandra, Birmingham

MARK THOMAS Sat 1 June, Midlands
Arts Centre (mac), Birmingham

KANE BROWN Sun 2 June, The Glee
Club, Birmingham

BRIAN CONLEY Sun 2 June, The
Alexandra, Birmingham

DIANE SPENCER, ERIC RUSHTON,
ANDREW BIRD & COMIC TBC Mon 3
June, The Royal Pug, Leamington
Spa

BRIAN BUTTERFIELD Wed 5 June,
Birmingham Town Hall

RICH HALL Wed 5 June, The Roses
Theatre, Tewkesbury

MILES JUPP Wed 5 June, Huntingdon
Hall, Worcester



Jo Carley And The Old Dry Skulls - Temperance, Leamington Spa

CHRIS FORBES, DARREN HARRIOTT, BAS RAHMAN, FINLAY CHRISTIE & COMIC TBC Fri 7 June, The Glee Club, B'ham

CHRIS FORBES, DARREN HARRIOTT, FINLAY CHRISTIE & COMIC TBC Sat 8 June, The Glee Club, Birmingham

SHAZIA MIRZA Sat 8 June, Regal, Tenbury Wells



TOMMY SANDHU Sun 9 June, The Glee Club, Birmingham

CATHERINE BOHART Sun 9 June, The Glee Club, Birmingham

Theatre

COME FROM AWAY Olivier & Tony award-winning musical telling the real-life story of the 7,000 air passengers from all over the world who were grounded in Canada during the wake of 9/11, until Sat 1 June, Birmingham Hippodrome

THE BUDDHA OF SUBURBIA Emma Rice stage adaptation of Hanif Kureishi's exploration of family, friends, sex, theatre and belonging, until Sat 1 June, Swan Theatre, Stratford-upon-Avon

SUNSHINE ON LEITH Amateur version presented by Solihull Theatre Company, until Sat 1 June, Bushell Hall, Solihull School

ENGLISH European premiere of Sanaz Toossi's Pulitzer Prize-winning play, set in a classroom in Iran where four adult students grapple with the challenge of learning English, until Sat 29 June, The Other Place, Stratford-upon-Avon

AS YOU LIKE IT Blue Duck Theatre Company presents its version of Shakespeare's tale of romance and mistaken identity, Sat 1 June, Midlands Arts Centre (MAC), B'ham

THE ADVENTURES OF DOCTOR DOLITTLE Illyria present an outdoor production of the much-loved fantasy tale. Suitable for all ages, Sat 1 June, Winterbourne House & Garden, University of Birmingham

PRISCILLA QUEEN OF THE DESERT Pershore Operatic & Dramatic Society present an amateur version of the iconic jukebox musical, Mon 3 - Sat 8 June, Number 8, Pershore

THE 39 STEPS Smash-hit comedy recreating John Buchan's classic spy thriller, Tues 4 - Sat 8 June, The Alexandra, Birmingham

WISE WOMEN Midlands-based Calathea Arts tell the stories of Margo

and Margaret, two women treading the same path 375 years apart, Wed 5 June, Old Joint Stock Theatre, Birmingham

LIBERATION SQUARES Three teenage girls forge an unlikely friendship in a play inspired by graphic novels, hip-hop, pop culture and real-world activists, Wed 5 - Fri 7 June, Belgrade Theatre, Coventry

THE GOVERNMENT INSPECTOR Amateur version of Nikolai Gogol's comedy, which satirises human greed, stupidity, and the extensive political corruption of Imperial Russia, Wed 5 - Sat 15 June, The Loft Theatre, Leamington Spa

THE MERRY WIVES OF WINDSOR Richard Goulding and Samantha Spiro star in a new production of Shakespeare's tale of mischief and double dealing, Wed 5 June - Sat 7 Sept, Royal Shakespeare Theatre, Stratford-upon-Avon

TONES: A HIP HOP OPERA Join Jerome, aka The Professor, as he navigates his way through Black British culture, class and belonging on a path to self-discovery, Thurs 6 - Fri 7 June, Patrick Studio, Birmingham Hippodrome

YES, WE'RE RELATED Florence Lacey-Evans' 'nutty new comedy', focusing on sibling grief and chaos, Thurs 6 - Fri 7 June, Old Joint Stock Theatre, Birmingham

ARABIAN NIGHTS Amateur version presented by Priory Youth Theatre, Thurs 6 - Sat 8 June, Priory Theatre, Kenilworth

LORD OF THE FLIES Playbox Theatre present an amateur version of William Golding's dystopian novel, Thurs 6 - Sat 8 June, The Dream Factory, Warwick

THE METAMORPHOSIS A new adaptation of Franz Kafka's classic story concerning a salesman who awakes one morning to find that he's transformed into a huge insect, Fri 7 June, Swan Theatre, Worcester

THE SECRET DIARY OF HENRY VIII The Three Inch Fools present an essential guide on how to keep your head in a Tudor court, Fri 7 June, Coventry Cathedral

AMADEUS Tewkesbury Arts & Drama Society present an amateur version of Peter Shaffer's famous play, Sat 8 - Sun 9 June, The Roses, Tewkesbury

GREAT EXPECTATIONS Quantum Theatre present an outdoor production of Dickens' classic tale, Sun 9 June, Forge Mill Needle Museum, Redditch

Kid's Theatre

MADAGASCAR THE MUSICAL CBBC star Karim Zeroual stars as King Julien in an adventure musical based on the

hit DreamWorks film, Thurs 30 May - Sun 2 June, Wolverhampton Grand Theatre

SPOT'S BIRTHDAY PARTY Interactive and accessible show based on Eric Hill's much-loved children's book, Fri 31 May - Sat 1 June, Belgrade Theatre, Coventry

THE TIGER WHO CAME TO TEA Join the tea-guzzling tiger in a delightful family show packed with oodles of magic, singalong songs and clumsy chaos. Based on Judith Kerr's best-selling children's book, Fri 31 May - Sun 2 June, The Albany Theatre, Coventry

CLAYTIME Indefinite Articles present a 'play with clay' event for kids aged three to six. Expect to enter a world of fabulous forms, amazing animals and morphing monsters, Sat 1 June, The Core Theatre, Solihull

DRAGONS AND MYTHICAL BEASTS LIVE An award-winning show featuring 'spectacular puppetry' and 'spell-binding adventure'. Suitable for audience members aged three-plus, Sat 1 - Sun 2 June, Warwick Arts Centre, Coventry

JURASSIC MANIA Interactive dinosaur show in which audiences can get 'up close and personal' with the most magnificent creatures ever to have roamed the earth, Sat 8 - Sun 9 June, Malvern Theatres

Light Entertainment

CIRCUS VEGAS All-new show featuring Wheel of Death & Globe of Speed alongside high-wire and hair-hanging acts. Acrobatic displays from Ukraine's Didyk Troupe and Tanzania's Bellagio Warriors also feature - as does Edy the Clown, until Sun 2 June, NEC, Birmingham



BOTTOMS UP: BURLESQUE & CABARET Enjoy sultry striptease, witty wisecracks and saucy songs as the creme de la creme of the cabaret world take to the stage to surprise and delight, Sat 1 June, Old Joint Stock Theatre, Birmingham

UNCANNY: I KNOW WHAT I SAW Danny Robins hosts a live investigation into the paranormal, Sun 2 June, Birmingham Hippodrome

SHOULD I DELETE THAT? Join Em & Alex for a night of embarrassing stories, DMCs and general Should I Delete That? chaos as they embark on their first-ever live tour, Sun 2

June, Crescent Theatre, Birmingham

BETWEEN THE COVERS LIVE Live version of the nation's favourite TV book club, featuring Kacey Ainsworth, Jo Brand, Stephen Mangan and bestselling author Joseph O'Connor, Tues 4 June, Birmingham Town Hall

PAUL ZERDIN: PUPPETMAN Join Paul and his creations - Sam, Albert, Baby and Roger the Bodyguard - in a brand-new comedy show for 2024, Tues 4 June, Palace Theatre, Redditch



AN EVENING OF MEDIUMSHIP WITH TONY STOCKWELL Wed 5 June, Benn Hall, Rugby

BEHIND THE MIC: BROADCASTING LEGENDS Join broadcasters Nick Owen, Jim Rosenthal and Pat Murphy as they give an insight into 50 years of fun and games on TV and radio, Wed 5 June, Palace Theatre, Redditch

BOX OF FROGS Birmingham's premiere Improv group present an evening of high-octane comedy nonsense, based entirely on audience suggestions, Fri 7 June, The Core, Solihull



THE D-DAY DARLINGS - 80TH ANNIVERSARY TOUR Featuring new arrangements of songs from the era, slick choreography and special guest performances, Fri 7 June, Palace Theatre, Redditch

BULLYACHE: WHO HURT YOU? A radical reimagining of choreographer Kenneth McMillan's ballet L'histoire de Manon and erotic thriller Showgirls. University of Birmingham String Ensemble feature. Jonathan Silk conducts, Sat 8 June, Elgar Concert Hall, Bramall Music Building, University of Birmingham

BACH TO BACHARACH Featuring The Magic Moments Orchestra and a West End cast, Sat 8 June, Palace Theatre, Redditch

GIRLS NIGHT OUT WITH FLAT AND THE CURVES A glittery cabaret described as Sex And The City meets The Spice Girls, Sat 8 June, The Albany Theatre, Coventry

MUSICALS BY CANDLELIGHT Collection

Saturday 1 - Sunday 9 June

of musical theatre classics from productions including Rent, Avenue Q, Bonnie & Clyde and Little Shop Of Horrors... Sat 8 - Sun 9 June, Old Joint Stock Theatre, Birmingham

AN EVENING WITH JOHN LYDON Join the former Sex Pistols frontman as he talks about his unique and extraordinary career, Sun 9 June, Birmingham Town Hall

Talks & Spoken Word

THE REVERSE SPOKEN WORD

SHOWCASE Student-led event supported by Warwick Literature Society, Thurs 6 June, Mead Gallery, Warwick Arts Centre, Coventry

DR PAUL NEWLAND: HOW TO WRITE A SONG ABOUT A PLACE The University of Worcester academic explores famous songs about places and considers what makes them so evocative, Thurs 6 June, The Hive, Worcester

Events

MADE IN THE BLACK COUNTRY

Celebrate Black Country people and products, until Sun 2 June, Black Country Living Museum, Dudley

CHARACTER WEEK Meet your favourite kids' characters across the half-term holiday, until Sun 2 June, West Midlands Safari Park, Bewdley, Nr Kidderminster

FAMILY TRAIL | BACK IN TIME: ANCIENT ROME A hoard of Roman coins has been lost around the museum. Can you match each Roman coin with its other side? until Sun 2 June, Worcester City Art Gallery & Museum

UK GAMES EXPO Featuring hundreds of exhibitors showing, demonstrating and selling tabletop games of all types, until Sun 2 June, NEC, B'ham

MIDLANDS AIR FESTIVAL Featuring over 100 hot-air balloons, until Sun 2 June, Ragley Hall, Warwickshire

KIDS RULE! Featuring hands-on activities and fresh-air family fun, until Sun 2 June, Witley Court, Worcestershire



KIDS RULE! Discover medieval weapons and armour, then test your skills in foam swordfighting games, until Sun 2 June, Kenilworth Castle

TAKING SHAPE: PATTERNS IN THE MUSEUM Discover patterns of all

kinds via numerous family activities, until Sun 2 June, British Motor Museum, Gaydon

RETURN OF THE DINOSAURS Meet and greet several dinosaurs and learn how to tame them, until Sun 2 June, Hatton Adventure World, Warwick

MAY HALF-TERM 'BEE DETECTIVE' TRAIL 'Buzz' around the parkland on this family-friendly activity trail and help the bees find their queen, until Sun 2 June, Charlecote Park, Warwick

BRICK OCEAN AT THE ENGINE HOUSE Go under the sea and discover ocean-themed brick model installations, until Sun 2 June, Severn Valley Railway, Bewdley, Nr Kidderminster

DESIGNS AND PATTERNS SEARCH

CHALLENGE HALF-TERM TRAIL Search for designs, shapes and patterns around the castle, until Sun 2 June, Hartlebury Castle, Worcestershire

GIANT TOP TRUMPS TRAIL From the most endangered species to the most elusive, explore and collect the highest-ranking cards to become the ultimate Top Trumps champion, until Sun 9 June, Twycross Zoo, Atherstone

LEGO® NINJAGO® Find your dragon power, until Sun 30 June, Legoland Discovery Centre, Birmingham

SEAHORSE HOTEL Check out the new seahorse area, until Sun 30 June, National SEA LIFE Centre, Birmingham

PLAY AND MAKE ZONE Discover the world of STEM via a selection of crafts which you can enjoy at your own pace, until Sat 31 Aug, Coventry Transport Museum

LADIES DAY The most stylish day of the season, featuring Planet ABBA, Sat 1 June, Worcester Racecourse

COVENTRY VEGAN FESTIVAL 2024

Celebrating an ethical, animal-friendly and eco-friendly lifestyle, Sat 1 June, Centre AT7, Coventry

COMPTON DINING CLUB

Digbeth Dining Club offers its usual mixture of award-winning and all-star street food, Sat 1 June, Compton Verney, Warwickshire

OUT OF THE BOX ARTS FAIR Featuring a wide range of artworks, Sat 1 - Sun 2 June, FarGo Village, Coventry

MOTOFEST COVENTRY Cultural festival celebrating transport heritage, Sat 1 - Sun 2 June, Coventry City Centre

FAMILY FUN DAY Family fun with garden games and a zip-wire on the Valley Lawn, Sun 2 June, Eastnor Castle, Herefordshire

THE RESONATE FESTIVAL OF ARTS & CULTURE

Explore culture and creativity from across the world at this festival-style day for people of all ages, Sun 2 June, University of Warwick, Coventry

BRITISH OPEN SQUASH CHAMPIONSHIP 2024 One of the most prestigious and



The Resonate Festival of Arts & Culture - University of Warwick

historic tournaments in professional squash returns to Birmingham, Sun 2 - Sun 9 June, The Rep, Birmingham

BIRMINGHAM DESIGN FESTIVAL A celebration of the local, national and international design industry, Thurs 6 - Sat 8 June, various venues across Birmingham

THREE COUNTIES CHAMPION DOG SHOW Over 120 breeds of dogs compete for the Best in Show title, Thurs 6 - Sun 9 June, Three Counties Showground, Malvern

STEP INSIDE STEWARD'S CHEMIST SHOP Hear about the history of Steward's Chemist Shop at 27 High Street, Fri 7 June, Worcester City Art Gallery & Museum

ROSIE'S RETRO BAZAAR: VINTAGE & ANTIQUE MARKET Showcase of 20th century and retro style, from furniture and fashion to homeware and memorabilia, Sat 8 June, Belgrade Theatre, Coventry

WOLVERHAMPTON PRIDE 2024

Celebrating the local LGBTQIA+ community, Sat 8 June, Wolverhampton City Centre

GARDENS CINEMA: BARBIE An outdoor screening of Barbie, set against the stunning backdrop of the Botanical Gardens, Sat 8 June, Birmingham Botanical Gardens

ANIMALS IN COLLAGE WORKSHOP Join award-winning artist Ann-Monique Stellinga to create your own animal artwork to take home, Sat 8 June, Hanbury Hall, Worcestershire

D-DAY 80TH ANNIVERSARY PICNIC Enjoy a picnic and 1940s-style fairground games, rides and stalls, Sat 8 June, Spetchley Park Estate, Worcester

GREAT BIG GREEN WEEK: WALLED GARDEN TOURS Enjoy a tour of the Walled Garden with a member of the gardening team, Sat 8 June, Hanbury Hall, Worcestershire

HCW WRESTLING Body-slamming action from your favourite pro wrestling stars, Sat 8 June, The Civic,

Stourport

SUSTAINABLE SHAKESPEARE

COMMUNITY DAY Find out how local and regional groups and organisations tackle climate change and protect our natural environment, Sat 8 June, Shakespeare's New Place, Stratford-upon-Avon

AI FUTURES: EXTREME ROBOTICS Join researchers from the University of Birmingham's Extreme Robotics Lab for a family-friendly venture into the world of advanced robotics and AI, Sat 8 June, The Exchange: 3 Centenary Square, Birmingham

FAMILY HERITAGE TOURS An interactive exploration of The Exchange, Sat 8 June, The Exchange: 3 Centenary Square, Birmingham

BCU INSPIRED FESTIVAL: FAMILY DAY Showcasing the talent and creativity of the university's arts, design and media students, Sat 8 June, Birmingham City University's City Centre Campus

FARGO X BROKEN SOULS RESCUE DOG FEST A fun day out for you and your four-legged family members, raising money for Broken Souls Rescue, Sat 8 June, FarGo Village, Coventry

HEY DUGGEE VISIT Take a heritage train ride out into the countryside to see Duggee, who will be appearing at regular intervals throughout the day at the Engine House Visitor Centre, Highley, Sat 8 - Sun 9 June, Severn Valley Railway, Bewdley, Nr Kidderminster

OUTDOOR CINEMA Outdoor screenings of Mamma Mia! and The Greatest Showman, Sat 8 - Sun 9 June, Warwick Racecourse

OPEN FARM SUNDAY Displays of farm machinery, animals and crops, Sun 9 June, Ragley Hall, Warwickshire

RAF COSFORD AIR SHOW A full day of family fun and aircraft displays, Sun 9 June, RAF Cosford, Nr Wolverhampton

Plus 12 Dance Bands 🌸

☆ Ladysmith Black Mambazo ☆ Elkie Brooks
 ☆ Gangstagrass ☆ Mary Black
 ☆ Eric Bibb ☆ Ward Thomas
 ☆ Jacqui McShee's Pentangle
 ☆ Beth Nielsen Chapman
 ☆ Manran ☆ Mary Gauthier
 ☆ The Longest Johns
 ☆ Peatbog Faeries ☆ El Pony Pisador
 ☆ The Sentimentals & friends
 ☆ The Wandering Hearts
 ☆ Kathryn Tickell & The Darkening
 ☆ Le Vent du Nord ☆ Dream in Colors
 ☆ The Celtic Social Club ☆ Bella Hardy
 ☆ London Afrobeat Collective
 ☆ The Pleasures ☆ Suntou Susso Band
 ☆ HEISK ☆ Ranagri ☆ The Hello Darlins
 ☆ Joshua Burnell Band ☆ The Magpies
 ☆ NATI ☆ Sidiki Jobarteh Trio
 ☆ The Hunch ☆ Rosie Hood Band
 ☆ James Delarre & Saul Rose
 ☆ Lady Nade ☆ Joli Blon
 ☆ Mazula ☆ Winter Wilson
 ☆ Suntou Susso (solo)
 ☆ Anthony John Clarke
 ☆ The Lost Notes ☆ The 309s
 ☆ Roswell ☆ Patakas
 ☆ Al O'Kane ☆ Dan the Hat

★ Ceilidhs
 ★ Workshops
 ★ Morris & dance teams
 ★ Singarounds & sessions
 ★ Craft fair
 ★ Food village
 ★ Camping & glamping
 ★ Real ale, wine & cocktail bars

refolkus
 Youth Festival
 P@ndemonium!
 Children's Festival

Day & weekend tickets

shrewsburyfolkfestival.co.uk

Cheltenham Science Festival 4-9 June 2024

Talks and interactive activities for all ages including...

Brian Cox
Robin Ince
Sophia Smith Galer
Dara O'Briain
Susie Dent
Jim Al-Khalili
Kate Bradbury
Thomas Hertog
Maggie Aderin-Pocock
Tim Peake

...and so many more scientists, thinkers, writers and creators

Produced by **CHELTENHAM Festivals**

Tickets on sale from Wednesday 24 April
Find out more at cheltenhamfestivals.com/science

MUSIC & DANCE ○ THEATRE & ART ○ SPORT & WELLBEING
HISTORY & LITERATURE

WARWICK PURSUITS FESTIVAL

FREE COMMUNITY FESTIVAL

June 22nd & 23rd St Nicholas Park

www.pursuitsfestival.co.uk

TAVOLA

Leamington Spa's newest Italian café, bar and restaurant
Bringing together the authentic tastes and cultures of Italy

44 Clarendon Street, Leamington CV32 4PE
tavolauk.co.uk Tel. 01926 744744



Joe Dolman - The Royal Pug, Leamington Spa

Gigs

DANNY MELLIN Mon 10 June, Hare & Hounds, Birmingham

CHARM OF FINCHES Mon 10 June, Temperance, Leamington Spa

RAQUEL RODRIGUEZ + GARETH DONKIN Tues 11 June, Hare & Hounds, Birmingham

KEBU Tues 11 June, Castle & Falcon, Birmingham

RUMOURS OF FLEETWOOD MAC Tues 11 June, Malvern Theatres

RICHARD HAWLEY Tues 11 June, The Wulfrun at The Halls W'hampton

ELLE LIMBEAR Wed 12 June, Hare & Hounds, Birmingham

DOJA CAT + HEMLOCKE SPRINGS Wed 12 June, Resorts World Arena, Birmingham

JAMES + RAZORLIGHT Wed 12 June, Utilita Arena Birmingham

ALISON TUCKER Wed 12 June, Stratford Playhouse

VINCE STAPLES Thurs 13 June, O2 Institute, Birmingham

TOTALLY TINA Thurs 13 June, Royal Spa Centre, Leamington Spa

DRAHLA Thurs 13 June, The Tin at The Coal Vaults, Coventry

THE BRANDON ALLEN GROOVE BAND Thurs 13 June, Marris Bar,

Worcester

THE MAGIC OF THE BEE GEES Thurs 13 June, Swan Theatre, Worcester

ALEXANDER STEWART Fri 14 June, O2 Academy, Birmingham

SHALAMAR Fri 14 June, Symphony Hall, B'ham

HONEYBOY HICKLING BAND Fri 14 June, The Core Theatre, Solihull

THE MCCARTNEY SONGBOOK Fri 14 June, Royal Spa Centre, Leamington Spa

JOE DOLMAN Fri 14 June, The Royal Pug, Leamington Spa

THE KINGS VOICE STARRING GORDON HENDRICKS Fri 14 June, The Rialto, Coventry

WALK RIGHT BACK - THE EVERLY BROTHERS' STORY Fri 14 June, Albany Theatre, Coventry

DEFINITELY MIGHTBE + ADORED Fri 14 June, Queens Hall, Nuneaton

YEAR OF THE DOG Fri 14 June, Marris Bar, Worcester

THE UNRAVELLING WILBURYS Fri 14 June, Huntingdon Hall, Worcester

FRANKIE - THE CONCERT Fri 14 June, Swan Theatre, Worcester

CLASSIC ROCK REVIVAL Fri 14 June, Palace Theatre, Redditch

BON JOVI VS NICKELBACK Fri 14 June, 45Live, Kidderminster

PORKPIE Sat 15 June, O2 Academy, B'ham

AN AUDIENCE WITH HIGHGATE GOSPEL CHOIR Sat 15 June, Birmingham Town Hall

DIRTY DC Sat 15 June, The Assembly, Leamington Spa

THE BAD DAY Sat 15 June, Temperance, Leamington Spa

EMBRACE Sat 15 June, hmv Empire, Coventry

GNOSS Sat 15 June, The Fleece Inn, Bretforton, Nr Evesham

THE FLEETWOOD MAC SONGBOOK Sat 15 June, The Henrician, Evesham

SHAKLEFORD + SMOKING GIVES YOU BIG TITS + PARDON US + GOODBYE BLUE MONDAY + SPOILERS Sat 15 June, Queens Hall, Nuneaton

THE MERSEY BEATLES Sat 15 June, Regal, Tenbury Wells

JON AMOR TRIO Sat 15 June, Marris Bar, Worcester

DISCO INFERNO Sat 15 June, Swan Theatre, Worcester

AND FINALLY... PHIL COLLINS Sat 15 June, Malvern Theatres

RE:VERVE Sat 15 June, 45Live, Kidderminster

ALFIE BOE Sun 16 June, Symphony Hall, Birmingham

WLDLWRS Sun 16 June, Temperance, Leamington Spa

Classical Music

JAMES THOMAS ORGAN RECITAL Tues 11 June, Hereford Cathedral

EX CATHEDRA: SUMMER MUSIC BY CANDLELIGHT Featuring Jeffrey Skidmore (conductor). Programme includes works by Benjamin Britten, Charles Villiers Stanford & Liz Dilot Johnson, Weds 12 June, Hereford Cathedral

CBSO: BARBER & RACHMANINOFF Featuring Kevin John Edusei (conductor) & Alisa Weilerstein (cello). Programme includes works by Dvořák, Barber & Rachmaninoff, Thurs 13 June, Symphony Hall, Birmingham

EPIC BRASS Featuring the Tredegar Town Band, Ian Porthouse, Josh Geddes, Alan Gifford (conductors), Dewi Griffiths (cornet) & Siôn Jones (euphonium). Programme includes works by Holst, E Ball, Curnow & Böllmann, Thurs 13 June, The Bradshaw Hall, Royal Birmingham Conservatoire

RBC SYMPHONY ORCHESTRA Featuring Martyn Brabbins (conductor), Emanuil Ivanov (piano) & Kinna Whitehead (voice). Programme includes works by Busoni, Respighi & a world premiere of Kinna Whitehead's The Lily, Fri 14 June, The Bradshaw Hall, Royal Birmingham Conservatoire

COLIN MILLINGTON ORGAN RECITAL Programme TBC, Fri 14 June, St Mary's Church, Warwick

PICCADILLY SINFONETTA: VIVALDI'S FOUR SEASONS BY CANDLELIGHT Featuring Katie Stillman (violin) & Warren Mailley-Smith (piano). Programme also includes Chopin's Piano Concerto No.1 in E Minor, Sat 15 June, Birmingham Cathedral

CITY OF BIRMINGHAM CHOIR: FRENCH ROMANTICS Featuring Adrian Lucas (conductor), David Briggs (organ), Philippa Hyde (soprano), Thomas Castle (tenor) & Jolyon Loy (bass). Programme includes works by Vierne, Durufé & Dupré, Sat 15 June, Tewkesbury Abbey

WARWICKSHIRE SYMPHONY ORCHESTRA Featuring Emily Wilson (soloist) & Roger Coull (conductor). Programme includes works by Brahms, Weber & Dvořák, Sat 15 June, All Saints Church, Leamington Spa

SPIRES SUMMER CONCERT Featuring Spires Philharmonic Orchestra & Chorus. Programme includes works by Schubert, Handel, Mozart, Bruckner, Beach, Fauré & more... Sat 15 June, St. James Church, Bulkington, Warwickshire

AMINGTON BRASS BAND Programme includes brass band favourites,

modern tunes and plenty of pomp and circumstance, Sat 15 June, The Hub at St Mary's, Warwick

WORCESTER PHILHARMONIC ORCHESTRA Featuring Eleanor Percy (violin), Dan Watson (conductor) & Graham Longfils (leader). Programme includes works by Mendelssohn, Brahms & Parry, Sat 15 June, Pershore Abbey

Comedy

PIERRE NOVELLIE & SUSAN RIDDELL Wed 12 June, Huntingdon Hall, Worcester

HUGE DAVIES & JOSH WELLER Thurs 13 June, Huntingdon Hall, Worcester

CLINTON BAPTISTE Fri 14 June, Birmingham Town Hall

GARETH MUTCH, KEITH FARNAN, ALLYSON JUNE SMITH, MAD RON & MATT STELLINGWERF Fri 14 June, The Glee Club, Birmingham

MORGAN REES & SHARON WANJOHI Fri 14 June, The Glee Club, B'ham

TOM STADE, ROB MULHOLLAND, JONNY PELHAM & WAYNE BEESE Fri 14 June, Castle & Falcon, Birmingham

RAW COMEDY Fri 14 June, Ecgwins Club, Evesham

GARETH MUTCH, KEITH FARNAN, ALLYSON JUNE SMITH & SAANIYA ABBAS Sat 15 June, The Glee Club, Birmingham

SOPHIE DUKER & ROB AUTON Sat 15 June, Huntingdon Hall, Worcester

EMMANUEL SONUBI Sun 16 June, The Glee Club, Birmingham

SAANIYA ABBAS Sun 16 June, The Glee Club, Birmingham

SUKH OJLA Sun 16 June, The Core Theatre, Solihull

TOMMY SANDHU Sun 16 June, The Core Theatre, Solihull

BELLA HULL & KATIE NORRIS Sun 16 June, Huntingdon Hall, Worcester

Theatre

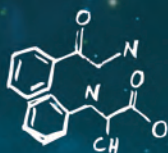
CHARLIE AND THE CHOCOLATE FACTORY THE MUSICAL BMOS presents an amateur version of the hit musical based on Roald Dahl's much-loved children's book, Tues 11 - Sat 15 June, The Alexandra, Birmingham

MOBY DICK Stage version of Herman Melville's seafaring adventure, Tues 11 - Sat 15 June, Malvern Theatres

FRANKIE GOES TO BOLLYWOOD New musical inspired by real stories of British women who have been caught in the spotlight of the biggest film industry in the world, Tues 11 - Sat 15 June, Wolverhampton Grand Theatre



thinktank
Birmingham science museum



DISCOVER

Family Fun
at Thinktank



- minibrum
 - 4k Planetarium
 - Outdoor Science Garden
- Plus lots more*



Don't miss

MAKERS and MACHINES

Creativity in the Computer Age

birminghammuseums.org.uk/thinktank

Funded by:



ARTS COUNCIL
ENGLAND



Birmingham
Museums

THE WIZARD OF OZ Craig Revel Horwood stars as the Wicked Witch of the West alongside Aston Merrygold as the Tin Man in a spectacular new production based on the much-loved classic, Tues 11 - Sun 16 June, Birmingham Hippodrome

THE WONDERFUL WIZARD OF OZ Amateur version presented by Encore Youth Theatre, Thurs 13 June, The Civic, Stourport

A MIDSUMMER NIGHT'S DREAM: THE MUSICAL Performed by students at Hereford College of Arts, Thurs 13 June, Regal, Tenbury Wells

WET FEET A poignant comedy about two lives that collide in the most unlikely of places. Note that this show contains themes of a sexual nature and audience members must be aged 16+, Thurs 13 - Fri 14 June, Old Joint Stock Theatre, Birmingham

PETER PAN Warwick Prep School present an amateur version of the timeless classic, Thurs 13 - Fri 14 June, Bridge House Theatre, Warwick

WINDRUSH - THE JOURNEY Pegasus Opera Company fuse music and storytelling to celebrate Black classical composers, past, present and future... Thurs 13 - Sat 15 June, Patrick Studio, Birmingham Hippodrome

LEGALLY BLONDE; THE MUSICAL Amateur version of the romantic comedy celebrating self-discovery and resilience, Thurs 13 - Sat 15 June, Warwick Arts Centre, Coventry

FAUSTUS: THAT DAMNED WOMAN Royal Birmingham Conservatoire present Chris Bush's reimagining of a classic cautionary tale, Thurs 13 - Sat 15 June, The Crescent Theatre, B'ham

KING LEAR A 'compelling' new production in which director Vyacheslav Yehorov draws on the parallels between Ukrainian refugees in the small town of Uzhhorod in the west of the country, and the themes of Shakespeare's famous tragedy, Fri 14 - Sat 15 June, The Other Place, Stratford-upon-Avon

Kid's Theatre

CHARLIE COOK'S FAVOURITE BOOK Puppetry & song come together in a new stage version of Julia Donaldson & Axel Scheffler's children's book, Tues 11 - Wed 12 June, Swan Theatre, Worcester

PSYCHEDELIGHT: MOHAND AND PETER Humour and visual poetry combine in a family-friendly show celebrating Sudan and the magic of friendship across cultures, Sat 15 - Sun 16 June, Midlands Arts Centre (mac), Birmingham

IS THAT A YETI, HETTY? Crow's Nest Theatre present a live-illustrated

storytelling show, performed at a window. A free drop-in event for families, Sat 15 - Sun 16 June, Midlands Arts Centre (mac), Birmingham

THE ADVENTURES OF DOCTOR DOLITTLE Illyria present an outdoor staging of the much-loved fantasy tale. Suitable for all ages, Sun 16 June, The Lenches Amphitheatre, Evesham

Dance

AN ORPHAN'S DREAM Intercultural physical theatre piece, seamlessly blending Chinese traditional stylised movements - including Kung Fu, Chinese opera and classical dance - with western physical theatre elements, Fri 14 June, Albany Theatre, Coventry

Light Entertainment

DISNEY IN CONCERT: THE SOUND OF MAGIC A symphonic celebration in which the renowned Novello Orchestra bring to life soundtracks and characters from the Walt Disney Animation Studios, Tues 11 June, Symphony Hall, Birmingham

AN EVENING WITH PSYCHIC SALLY Tues 11 June, Palace Theatre, Redditch

PUNT AND DENNIS: WE ARE NOT A ROBOT Hugh Dennis and Steve Punt, back on tour for the first time in 10 years, Wed 12 June, Birmingham Town Hall

ALL THE LOVERS: A NIGHT OF LIVE QUEER MUSIC & DANCING An evening of live music and dance celebrating favourite independent queer music artists from across the UK - including Pink Suits, Mickey Callisto and Spit XL... Wed 12 June, Jennifer Blackwell Performance Space, Symphony Hall, Birmingham

PRISCILLA, QUEEN OF DISASTER One-woman show that gives an honest account of surviving the early years of motherhood, Thurs 13 June, Swan Theatre, Worcester

RAVE ON: THE ULTIMATE 50S AND 60S EXPERIENCE Enjoy a nostalgic musical journey featuring classics from Elvis, Buddy Holly, Chuck Berry, The Beatles, Connie Francis, Neil Sedaka, Little Richard, Roy Orbison, Lulu, The Beach Boys and many more... Sat 15 June, Palace Theatre, Redditch

KS CHITHRA: REWIND UK TOUR 2024 A soul-stirring performance paying homage to Chithra's timeless classics and new musical masterpieces. Featuring a 14-piece live orchestra and singers Madhu Balakrishnan, Nishad and Anamika, Sun 16 June, Birmingham Town Hall

Talks & Spoken Word

FEMINIST ORAL HERSTORIES WITH KATY WAREHAM MORRIS Join Katy as she discusses her poetry, practice and experiences, Mon 10 June, The Hive, Worcester

AN EVENING WITH ANDREW SCHEPS The three-time Grammy award-winning mix & recording engineer and record producer shares stories from his life in music, Sat 15 June, The Hive, Worcester

Events

BIG GOBS PUPPET PROJECT Enjoy performances and create your own unique Big Gob Puppet, Wed 12 - Sat 15 June, Herbert Art Gallery & Museum, Coventry

GREAT BIG GREEN WEEK: WALLED GARDEN TOURS Enjoy a tour of the Walled Garden with a member of the gardening team, Thurs 13 June, Hanbury Hall, Worcestershire

BBC GARDENERS' WORLD LIVE Featuring presenters and top experts, show gardens and a floral marquee, Thurs 13 - Sun 16 June, NEC, Birmingham

BBC GOOD FOOD SHOW SUMMER Featuring chefs and experts sharing their culinary skills and cooking live on stage, Thurs 13 - Sun 16 June, NEC, Birmingham

ROYAL THREE COUNTIES SHOW One of the UK's largest celebrations of the countryside and rural life, Fri 14 - Sun 16 June, Three Counties Showground, Malvern

WESTON PARK AIR SHOW INTERNATIONAL Back for its 27th year, attracting visitors and pilots from all over the world, Fri 14 - Sun 16 June, Weston Park, Shropshire

GREAT BIG GREEN WEEK: WALLED GARDEN TOURS Enjoy a tour of the Walled Garden with a member of the gardening team, Sat 15 June, Hanbury Hall, Worcestershire

WESTON PARK FIREWORK & AERIAL PYRO SPECTACULAR Featuring the Aerospax Display Team, who combine formation aerobatics with night-time pyrotechnics, Sat 15 June, Weston Park, Shropshire

INTRODUCTION TO SUMINAGASHI PAPER MARBLING WITH THE HANDCRAFTED HEN Learn the technique of suminagashi paper marbling, Sat 15 June, Herbert Art Gallery & Museum, Coventry

DOZE UNDER DIPPY Stay overnight in the museum, snoozing under the feet of a 26-foot Diplodocus, Sat 15 June, Herbert Art Gallery & Museum, Coventry

MIXED TRACTION & REAL ALE FESTIVAL Serving up to 20 real ales alongside a busy service of steam and diesel trains, Sat 15 - Sun 16 June, Severn Valley Railway, Bewdley, Nr Kidderminster

A FEEL OF THE FORTIES Mark the 80th anniversary of the June D-Day landings as you learn about life in the 1940s, Sat 15 - Sun 16 June, Hartlebury Castle, Worcestershire

FIRING UP FOR FATHERS DAY Featuring heritage vehicles, vintage tractors and car club displays, Sat 15 - Sun 16 June, Avoncroft Museum, Bromsgrove

ARTIZAN BAZAAR A handcrafted and small-business craft fair, Sat 15 - Sun 16 June, Baddesley Clinton, Warwickshire

SPIES AND SEARCHERS See if you can work out who the spies are as you walk around the Hall and its grounds, Sat 15 - Sun 16 June, Harvington Hall, Worcestershire

ANIMECON UK A showcase of the best in Asian pop culture, Sat 15 - Sun 16 June, NEC, Birmingham

NATIONAL CYCLING SHOW Popular show bringing together industry experts to educate, inspire and motivate, Sat 15 - Sun 16 June, NEC, Birmingham

FATHER'S DAY FALCONRY A 'spectacular collection' of birds take flight in a display of Victorian falconry, Sat 15 - Sun 16 June, Witley Court, Worcestershire

ARCHERY Have-a-go archery sessions for adults and children, Sun 16 June, Eastnor Castle, Herefordshire

CLASSIC CAR & MOTOR SHOW Featuring up to 1,000 vintage, classic and modern classic cars and motorcycles, Sun 16 June, Ragley Hall, Warwickshire

FATHER'S DAY LUNCH Treat Dad and your loved ones to a premium Sunday lunch, Sun 16 June, Severn Valley Railway, Bewdley, Nr Kidderminster

Festivals

NOCTURNE LIVE AT BLENHEIM PALACE Line-up includes Crowded House, Turin Brakes, Sheryl Crow, Wed 12 - Sun 16 June, Blenheim Palace, Oxfordshire

BEARDY FOLK FESTIVAL Line-up includes Blair Dunlop, Kate Rusby, Mad Dog Mcrea, Thurs 13 - Sun 16 June, Hopton Court, Cleobury Mortimer, Shropshire

DOWNLOAD FESTIVAL Line-up includes Queens Of The Stone Age, Fall Out Boy, Avenged Sevenfold, Fri 14 - Sun 16 June, Donington Park, Derby



The Dualers - The Rialto, Coventry

Gigs

LYDIA LUNCH & MARC HURTADO PLAY SUICIDE AND ALAN VEGA Mon 17 June, Hare & Hounds, Birmingham

LARRY DEAN + LAURA DAVIS Mon 17 June, Temperance, Leamington Spa

BAT FOR LASHES Tues 18 June, Birmingham Town Hall

NICK MASON'S SAUCERFUL OF SECRETS Tues 18 June, Symphony Hall, B'ham

CHARM OF FINCHES + MIA KELLY Tues 18 June, The Fleece Inn, Bretforton, Nr Evesham

RUMOURS OF FLEETWOOD MAC Tues 18 June, Wolverhampton Grand Theatre

GIRLS ALOUD Tues 18 - Thurs 20 June, Resorts World Arena, B'ham

BIG TIME RUSH Wed 19 June, O2 Academy, Birmingham

UNDERSIDE Wed 19 June, Dead Wax, Digbeth, Birmingham

LOUIS DUNFORD Thurs 20 June, Hare & Hounds, Birmingham

GODSTICKS Thurs 20 June, The Asylum, Birmingham

BOWIE EXPERIENCE Thurs 20 June, The Alexandra, B'ham

THE BROTHERS GILLESPIE Thurs 20 June, Temperance, Leamington Spa

THE AMY WINEHOUSE BAND Thurs 20 June,

Warwick Arts Centre, Coventry

ALBERT LEE Thurs 20 June, Huntingdon Hall, Worcester

BLACK UMFOLOSI Thurs 20 June, Swan Theatre, Worcester

LIZZIE AND THE BANSHEES Fri 21 June, Castle & Falcon, Birmingham

PHIL ROBSON ORGAN TRIO Fri 21 June, 1000 Trades, Birmingham

WANNABE - THE SPICE GIRLS SHOW Fri 21 June, The Alexandra, Birmingham

THIRD CULTURE COLLECTIVE X ASHNA Fri 21 June, Mama Roux's, Birmingham

BONFIRE RADICALS Fri 21 June, Temperance, Leamington Spa

DANNY ANSELL + MARUI DRIVE + SONS OF REST + GLASS CANNONS Fri 21 June, hmv Empire, Coventry

JIVE TALKIN' - BEE GEES TRIBUTE Fri 21 June, Albany Theatre, Coventry

THE SMYTHS Fri 21 June, Queens Hall, Nuneaton

THE MAGIC OF MOTOWN Fri 21 June, Malvern Theatres

ELEGANTLY INXS Fri 21 June, 45Live, Kidderminster

TALON Fri 21 - Sat 22 June, Swan Theatre, Worcester

PUNK + DRONGOS FOR EUROPE + LIARBITYS + COMPLETE DYSFUNCTION Sat 22 June, Castle & Falcon,

Birmingham

TROY REDFERN Sat 22 June, The Asylum, Birmingham

THE NOTEBENDERS Sat 22 June, Birmingham Town Hall

KINGS OF LEON + THE VACCINES Sat 22 June, Utilita Arena B'ham

ERROL LINTON BAND Sat 22 June, Temperance, Leamington Spa

THE DUALERS Sat 22 June, The Rialto, Coventry

LINK N PARK + SHINXBI Sat 22 June, Arches Venue, Coventry

CELEBRATING CELINE! Sat 22 June, Albany Theatre, Coventry

THE HISTORY OF ROCK Sat 22 June, The Henrician, Evesham

PINK BY VICKY JACKSON Sat 22 June, Queens Hall, Nuneaton

MALVERN BIG BAND Sat 22 June, The Market Theatre, Ledbury

THE WESTLANDS Sat 22 June, Marrs Bar, Worcester

PUZZLE TREE + NO MORE KINDRED + PARADISE SINS Sat 22 June, Paradiddles Cafe, Worcester

THE MAGIC OF MOTOWN Sat 22 June, Wolverhampton Grand Theatre

KING PLEASURE AND THE BISCUIT BOYS Sun 23 June, Evesham Town Hall

SYMPHONIC IBIZA Sun 23 June, The Tandem Outdoor Arena, Rugby

Classical Music

THOMAS TROTTER ORGAN CONCERT

Mon 17 June, Birmingham Town Hall

EX CATHEDRA: SUMMER MUSIC BY

CANDLELIGHT Featuring Jeffrey Skidmore (conductor). Programme includes works by Benjamin Britten, Charles Villiers Stanford & Liz Dilot Johnson, Tues 18 June, St Paul's Church, Jewellery Quarter, B'ham

PETER DYKE ORGAN CONCERT

Programme includes works by J.S. Bach, Hollins, S.S. Wesley & more... Tues 18 June, Hereford Cathedral

CBSO: MENDELSSOHN'S ITALIAN

SYMPHONY Featuring Olari Elts (conductor) & Ariel Lanyi (piano). Programme includes works by Farrenc, Mozart, Schubert & Mendelssohn, Wed 19 June, Symphony Hall, Birmingham

ORCHESTRA OF THE SWAN: METAMORPHOSES (NIGHT OWL)

Featuring David Le Page (violin/director), David Gordon (keyboard) & Victoria Brawn (oboe). Programme explores transformation in music and words, from Bach to Britten, and Keats to Kafka, Wed 19 June, Stratford Playhouse

AN EVENING WITH ANNA LAPWOOD

Featuring Anna Lapwood (organ). Programme includes works by H Zimmer, Glass, Menken, Debussy, Rani & O Belli, Thurs 20 June, Birmingham Town Hall

TIANJIAN XIE PIANO CONCERT

Programme includes works by Chopin, Thurs 20 June, Recital Hall, Royal Birmingham Conservatoire

ACADEMY OF ST MARTIN IN THE FIELDS

Featuring Tomo Keller (soloist). Programme includes works by Beethoven, Wallen, Vaughan-Williams & Mozart, Fri 21 June, Coventry Cathedral

UNIVERSITY OF WARWICK CHAMBER

CHOIR: APPEAR & INSPIRE Programme includes music by Lobo, Smith-More, Pärt & Britten, Fri 21 June, Warwick Arts Cnetre, Coventry

CBSO: THE MUSIC OF HANS ZIMMER

Featuring Nicholas Buc (conductor), Andrew Pogson & Dan Golding (presenters). Programme includes Zimmer's music from Sherlock Holmes, Pirates of the Caribbean, Inception, Kung Fu Panda & more... Fri 21 June, Symphony Hall, B'ham

PAVLOS TRIANTARIS ORGAN CONCERT

Programme TBC, Fri 21 June, St Mary's Church, Warwick

COLLEGIUM WARWICK Featuring Adrian Moore (organ) & Ron Binnie (director). Programme includes works by Vivaldi, Haydn, Fauré, Brahms & J.S. Bach, Sat 22 June, St Mary's Church, Warwick

FESTAL CHORAL EVENSONG Featuring Coventry Cathedral Chorus. Programme includes works by Wood, M Martin, Stanford, Parry & Elgar, Sat 22 June, Coventry Cathedral

AN EVENING IN SUPPORT OF THE FARMERS OVERSEAS ACTION GROUP

Featuring Hannah Brookes-Hughes (violin) & James Lancelot (organist). Programme includes works by Bizet & Saint-Saëns, Sat 22 June, Pershore Abbey

BIRMINGHAM CONTEMPORARY MUSIC

GROUP: NOH REIMAGINED Featuring BCMG musicians exploring traditional Japanese Noh Theatre. Programme includes new works by Ben Nobuto & Hollie Harding, plus works by Toshio Hosokawa & Misato Mochizuki, Sun 23 June, CBSO Centre, Birmingham

STRATFORD UPON AVON SYMPHONY

ORCHESTRA Featuring Dan Watson (conductor), Phil Houghton (leader) & Suzie Purkis (mezzo-soprano). Programme includes works by Wagner, Elgar & Tchaikovsky, Sun 23 June, The Greig Hall, Alcester

UNIVERSITY OF WARWICK SYMPHONY ORCHESTRA & CHORUS: FINALE!

Programme includes works by Tchaikovsky, Vaughan Williams & Haydn, Sun 23 June, Warwick Arts Centre, Coventry

BIRMINGHAM SYMPHONIC WINDS:

UN-MASKED! Also featuring Minnesota's Grand Symphonic Winds & Warwick Foundation Wind Orchestra, Sun 23 June, Warwick Hall

Comedy

GARRETT MILLERICK & STEVE BUGEJA Tues 18 June, Huntingdon Hall, Worcester

ANDY ROBINSON, CONNOR BURNS & STEVE WILLIAMS Thurs 20 June, The Glee Club, Birmingham

JOE MCTERNAN Thurs 20 June, The Glee Club, Birmingham

JOE MCTERNAN, ABIGOLIAH SCHAMAUN, CONNOR BURNS & STEVE WILLIAMS Fri 21 - Sat 22 June, The Glee Club, Birmingham

BILAL ZAFAR Sat 22 June, The Glee Club, Birmingham



PAUL SINHA, PAUL MCCAFFREY, KATE LUCAS & BARRY DODDS Sat 22 June, The Tandem Outdoor Arena, Rugby

Theatre

JULIUS CAESAR 2024 One of the most famous political coups in history gets the Oddssocks treatment, Mon 17 - Wed 19 June, Belgrade Theatre, Coventry

THE GOOD LIFE The Nonentities Society present a stage version of the much-loved 1970s TV sitcom, Mon 17 - Sat 22 June, The Rose Theatre, Kidderminster

THE TELLING: I, SPIE Concert-play telling the imagined story of renaissance composer & lutenist John Dowland's brush with the Elizabethan secret service, Tues 18 June, Stratford Play House, Stratford-upon-Avon



SIX Award-winning musical in which the wives of Henry VIII take to the mic to tell their tales, remixing 500 years of historical heartbreak into an 80-minute celebration of 21st-century girl power, Tues 18 - Sat 22 June, Birmingham Hippodrome

GLORIOUS! Amateur production that tells the true story of Florence Foster Jenkins, the worst singer in the world, Tues 18 - Sat 22 June, The Bear Pitt Theatre, Stratford-upon-Avon

KYOTO Fast-paced political thriller which places audiences right at the heart of the historic 1997 Kyoto climate summit, Tues 18 June - Sat 13 July, Swan Theatre, Stratford-upon-Avon

BEAUTIFUL EVIL THINGS High-energy one-woman show 'combining physical storytelling and cut-throat wit', Wed 19 June, Swan Theatre, Worcester



THE ADDAMS FAMILY YOUNG@PART A NEW MUSICAL A 'dark and funny' amateur reimaging of the 'kooky' musical, Wed 19 - Fri 21 June, Bridge House Theatre, Warwick

INSPECTOR DRAKE'S LAST CASE Fast-paced farce performed by Regal Community Theatre, Wed 19 - Sat 22 June, Regal, Tenbury Wells

RHYMES AGAINST HUMANITY Improvised musical, totally ad-libbed

with prompts from the audience, Thurs 20 June, Old Joint Stock Theatre, Birmingham

HAMLET The Lord Chamberlain's Men present an outdoor version of Shakespeare's most famous tragedy, Fri 21 June, Packwood House, Solihull

FIDDLER ON THE ROOF Amateur version of the hit musical about a poor Jewish peasant and his attempts to marry off his five daughters, Fri 21 - Sat 29 June, Rugby Theatre

REVOLUTION Razzamataz Theatre School presents a showcase of music, choreography and acting, Sat 22 June, Belgrade Theatre, Coventry

THE HOMECOMING Amateur version of Harold Pinter's masterpiece concerning family, power struggles, masculinity and home, Sat 22 - Sat 29 June, Criterion Theatre, Coventry

MRS KAPOOR'S DAUGHTER'S WEDDING 2 MAURITIUS A British Asian comedy featuring singing, dancing and dhol... Sun 23 June, The Alexandra, B'ham

Kids Theatre

IN THE NIGHT GARDEN LIVE Join Igglepiggle, Upsy Daisy, Makka Pakka and friends in a fun-filled live show which also includes a very special visit from the amazing flying Pinky Ponk, Fri 21 - Sat 22 June, Belgrade Theatre, Coventry

Dance

COPPELIA KVN Dance present a contemporary reimaging of a classic ballet, Thurs 20 June, The Albany Theatre, Coventry

BLACK BRITISH BALLET: ISLAND MOVEMENTS Epic tale of a Windrush family that focuses on the story of a young soldier in World War Two, Sat 22 June, Birmingham Hippodrome

AERIAL DANCE: THIS IS ME SHOWCASE Performed by students from across the UK, Sun 23 June, The Albany Theatre, Coventry

Light Entertainment

CLOSURE? One-act comedy performance lecture following Lydia De La Murray on a journey of self-discovery, Wed 19 June, Old Joint Stock Theatre, Birmingham

G4 20TH ANNIVERSARY TOUR Wed 19 June, Palace Theatre, Redditch

HENRY WINKLER: THE FONZ AND BEYOND Join the Happy Days actor and bestselling author as he shares his heart-warming story in celebration

of his memoir, Being Henry, Thurs 20 June, Warwick Arts Centre, Coventry

GIRLS NIGHT OUT WITH FLAT AND THE CURVES A glittery cabaret described as Sex And The City meets The Spice Girls, Thurs 20 June, Palace Theatre, Redditch

AN EVENING WITH TREVOR & GARY That'll Be The Day's Trevor Payne & Gary Anderson take to the road to share 40 years of history through music, stories and laughter, Thurs 20 June, The Roses Theatre, Tewkesbury

JAY ADKINS: A STATE OF MIND SHOW Two hours of 'mind-splitting mentalism accompanied by a dose of comedy', Fri 21 June, The Civic, Stourport

THE MUSIC OF ELTON JOHN BY CANDLELIGHT Featuring a cast of West End singers and a live band, Fri 21 June, Worcester Cathedral

KATHERINE AND PIERRE: A KATY PERRY DRAG MUSICAL Lip-sync, mime, acrobatics and choreography come together in TalkSmall's genre-defying production 'that plays out the highs and lows of a relationship in a way you've never seen before', Fri 21 June, Old Joint Stock Theatre, B'ham

LEA SALONGA - STAGE, SCREEN & EVERYTHING IN BETWEEN Featuring stage & screen classics from Lea's best-known roles in Miss Saigon, Les Misérables, Aladdin, Mulan and more... Fri 21 June, Wolverhampton Grand Theatre



AN EVENING OF MEDIUMSHIP WITH PSYCHIC MEDIUM NIKKI KITT Fri 21 June, Huntingdon Hall, Worcester

ROCKETMAN, WITH LIVE ORCHESTRA The critically acclaimed, Oscar-winning musical fantasy, charting the life of the legendary Elton John, presented live in concert with a full orchestra, Sat 22 June, Symphony Hall, Birmingham

THE BEST OF JOHN WILLIAMS Featuring the London Concert Orchestra. Programme includes music from Star Wars, Jurassic Park, Schindler's List & more... Sun 23 June, Symphony Hall, Birmingham

GIRLS NIGHT OUT WITH FLAT AND THE CURVES A glittery cabaret described as Sex And The City meets The Spice Girls, Sun 23 June, Swan Theatre, Worcester

TRASH TEST DUMMIES CIRCUS Children's show featuring slapstick, daring acrobatics and dexterous juggling, Sun 23 June, Regal, Tenbury

Talks & Spoken Word

POCK Weeping Bank Library Tales present an immersive after-dark talk about the shadowy world of witchcraft, possession and the occult, Tues 18 June, The Hive, Worcester

AN EVENING WITH MICHAEL PORTILLO Sat 22 June, Malvern Theatres

Events

A TOUR OF THE UNIVERSITY ART COLLECTION Join the curator for a tour of Warwick University's art collection, exploring artworks that address the subject of migration, Wed 19 June, Warwick Arts Centre, Coventry

THE BIG BANG FAIR Featuring hands-on activities, careers panels and workshops, Wed 19 - Fri 21 June, NEC, Birmingham

POTFEST BY THE LAKE Showcasing the work of 80 of the UK's finest ceramics makers, Fri 21 - Sun 23 June, Compton Verney, Warwickshire

POETRY MACHINE Beth Calverley will be chatting to visitors about their interests and dreams as she produces a brand-new poem, custom-made for visitors, Sat 22 June, Baddesley Clinton, Warwickshire

DENNY VS CASH A night of championship boxing, Sat 22 June, Resorts World Arena, Birmingham

PINHOLE CAMERA MAKING WITH CREATIVE IN NATURE Make your own pinhole camera and process your own images from them, Sat 22 June, Herbert Art Gallery & Museum, Coventry

ORIENTAL EXPRESS A Chinese-inspired dining experience on the Severn Valley Railway, Sat 22 June, Severn Valley Railway, Bewdley, Nr Kidderminster

BELGIAN BEER BASH WITH TRIPLEB Enjoy a selection of beers whilst listening to local bands playing live, Sat 22 June, Hartlebury Castle, Worcestershire

GIN TRAINS Gin-tasting session combined with a leisurely ride along the railway, Sat 22 - Sun 23 June, Severn Valley Railway, Bewdley, Nr Kidderminster

WARWICKSHIRE GAME & COUNTRY FAIR Featuring the very best in countryside activities and entertainment, Sat 22 - Sun 23 June, Wroxall Park, nr Warwick

MIDSUMMER FUN DAY Midsummer fun, with local suppliers and games aplenty, Sun 23 June, Eastnor Castle, Herefordshire



A free programme of inspiring and interactive events

Designed for all ages to spark ideas, curiosity, and creativity. Join us across Coventry and Warwickshire for talks, workshops, hands-on activities and more!

For more information visit www.resonatefestival.co.uk



WARWICK
THE UNIVERSITY OF WARWICK

also



12th July 2024 14th July
Warwickshire

also-festival.com

10% off weekend & day
tickets with this QR code*



*Until May 2024

ALSO is the award-winning ideas, music and comedy festival set in a stunning Capability Brown landscape where you can explore, swim, relax and let **ideas run wild**.



Bloc Party - O2 Institute, Digbeth

Gigs

ORA COGAN + MICHAEL B. THOMAS Mon 24 June, Hare & Hounds, Birmingham

JESS VINCENT AND KATIE WHITEHOUSE Mon 24 June, The Kitchen Garden, Birmingham

TMDISTANT + YAOUNDEBOXINGCLUB Tues 25 June, The Sunflower Lounge, Birmingham

UNDEROATH Tues 25 June, O2 Institute, Birmingham

GLADYS KNIGHT Tues 25 June, Symphony Hall, Birmingham

CSS Tues 25 June, XOYO, Digbeth, Birmingham

SAIJE Tues 25 June, Temperance, Leamington Spa

KIM GORDON Wed 26 June, O2 Institute, Birmingham

HOMETOWN GLORY: A TRIBUTE TO ADELE Wed

26 June, The Tandem Outdoor Arena, Rugby

AYNSLEY LISTER Thurs 27 June, Hare & Hounds, Birmingham

MIKE SILVER Thurs 27 June, Bromsgrove Folk Club

HEJIRA - CELEBRATING JONI MITCHELL Thurs 27 June, Marrs Bar, Worcester

THE ILLEGAL EAGLES Thurs 27 June, Malvern Theatres

BLOC PARTY Fri 28 June, O2 Institute, B'ham

HEADSHRINKERS Fri 28 June, Dead Wax, Digbeth, Birmingham

MATTHEW HALSALL Fri 28 June, The Crossing, Digbeth, Birmingham

TROYE SIVAN + JODIE HARSH Fri 28 June, Utilita Arena B'ham

THOM KIRKPATRICK Fri 28 June, The Royal Pug, Leamington Spa

THE MUCKS Fri 28 June, hmv Empire, Coventry

TARA JAFF, MEHDI AND

ADIB ROSTAMI Fri 28 June, Warwick Arts Centre, Coventry

SHEF LEPPARD & TOTO UK Fri 28 June, Queens Hall, Nuneaton

THE AMERICAN FOUR TOPS Fri 28 June, Regal, Tenbury Wells

KAST OFF KINKS Fri 28 June, Swan Theatre, Worcester

KRINGO BLUE + ALICE COLEY + THE GIRL WITH A HAT + RUBEN SEABRIGHT Fri 28 June, Paraddles Cafe, Worcester

LET THERE BE HOUSE! Fri 28 June, Palace Theatre, Redditch

PARTY101 Sat 29 June, O2 Academy, B'ham

TY SEGALL Sat 29 June, The Crossing, Digbeth, Birmingham

THE SUPREME DREAMGIRLS Sat 29 June, Regal, Tenbury Wells

ULTIMATE MADNEZZ Sat 29 June, 45Live, Kidderminster

AYNSLEY LISTER Sat 29 June, Malvern Cube

JULIE JULY BAND Sun 30 June, The Kitchen Garden, Birmingham

THE BIG COUNTRY MUSIC SHOW Sun 30 June, Swan Theatre, Worcester

DAVE BAINBRIDGE & SALLY MINNEA Sun 30 June, 45Live, Kidderminster

NATHANIEL RATELIFF AND THE NIGHT SWEATS Sun 30 June, The Wulfrun at The Halls Wolverhampton

Classical Music

LUNCHTIME ORGAN RECITAL Featuring Jonathan Hope (organ), Tues 25 June, Hereford Cathedral

PURCELL: TE DEUM Featuring The Rugby Choristers and Canzona Baroque. Programme includes additional works by Purcell, Tues 25 June, Temple Speech Room, Rugby

ESTHER ABRAMI PLAYS MENDELSSOHN Also featuring Kenneth Woods (conductor). Programme includes works by Elgar, Mendelssohn & Beethoven, Wed 26 June, Cheltenham Town Hall

ORCHESTRA OF THE SWAN: SONGS OF INNOCENCE & EXPERIENCE Featuring Rebecca Miller (conductor) & Roderick Williams (baritone). Programme includes works by Wagner, Mahler, Puccini & Mozart, Thurs 27 June, Warwick Hall

ARMONICO CONSORT & OZ CLARKE: FAIRY QUEEN Featuring Christopher Monks (director), Oz Clarke & Laura Moretto (narrators), Eloise Irving & Hannah Fraser-MacKenzie (sopranos), William Towers (alto), Nathan Vale (tenor) & Gareth John (bass). Programme comprises a semi-staged version of Purcell's Fairy Queen, Thurs 27 June, Royal Pump Rooms, Leamington Spa

SUMMER RECITALS AT ST MARY'S Featuring young musicians from Warwick School, Fri 28 June, St Mary's Church, Warwick

BIRMINGHAM BACH CHOIR: SUMMER CONCERT Featuring Paul Spicer (conductor), Callum Alger (organ), Ciara Preston-Myakicheff (soprano) & Isaac Boulter (baritone). Programme includes works by Bednall, Bernstein, Elgar & Spicer, Sat 29 June, St Mary's Church, Warwick

CBSO: MADAM BUTTERFLY Featuring Kazuki Yamada (conductor), Thomas Henderson (director), Maki Mori (Cio-Cio San), Pene Pati (Pinkerton) Christopher Purves (Sharpless) & the CBSO Chorus. Programme comprises Puccini's Madam Butterfly, Sat 29 June, Symphony Hall, Birmingham

LEAMINGTON SINFONIA Programme includes works by Skempton, Page & Shostakovich, Sat 29 June, All Saints' Church, Leamington Spa

PICCADILLY SINFONIETTA: VIVALDI'S FOUR SEASONS BY CANDLELIGHT Featuring Martyn Jackson (violin) & Warren Mailley-Smith (piano). Programme also includes works by Mozart, Sat 29 June, Coventry Cathedral

ARMONICO CONSORT & OZ CLARKE: FAIRY QUEEN Featuring Christopher Monks (director), Oz Clarke & Laura

Moretto (narrators), Eloise Irving & Hannah Fraser-MacKenzie (sopranos), William Towers (alto), Nathan Vale (tenor) & Gareth John (bass). Programme comprises a semi-staged version of Purcell's Fairy Queen, Sat 29 June, Malvern Theatres

MALVERN FESTIVAL CHORUS - COME AND SING: HAYDN THE CREATION Conducted by Jonathan Brown. The day includes an afternoon workshop followed by an evening concert, Sat 29 June, Great Malvern Priory

LEAMINGTON CHAMBER ORCHESTRA Featuring Richard Laing (conductor). Programme includes works by Puccini, Weill, Schönberg & Sibelius, Sun 30 June, Holy Trinity Church, Leamington Spa

Comedy

CATHERINE BOHART Wed 26 June, Belgrade Theatre, Coventry

JIMMY CARR Wed 26 June, Malvern Theatres



COMEDY CLUB Thurs 27 June, Stratford Playhouse

GAVIN WEBSTER, ELF LYONS, DAVE FULTON, BRUCE DEVLIN & MAGS MCHUGH Fri 28 June, The Glee Club, Birmingham

TROY HAWKE Sat 29 June, Birmingham Town Hall

GAVIN WEBSTER, ELF LYONS, DAVE FULTON & BRUCE DEVLIN Sat 29 June, The Glee Club, Birmingham

RUBY WAX Sat 29 June, Warwick Arts Centre, Coventry

ADAM BEARDSMORE, JULES O'BRIAN, RICHARD DADD, MASAI GRAHAM, RACHEL BAKER, MATT BRAGG & TAL DAVIES Sun 30 June, The Glee Club, Birmingham

Theatre

SHOWSTOPPER! THE IMPROVISED MUSICAL A brand-new musical comedy created from scratch at each performance from audiences suggestions. Part of Rugby's Festival On The Close, Mon 24 June, The Tandem Outdoor Arena, Rugby

NOTES FROM A SMALL ISLAND Amateur stage version of Bill Bryson's witty exploration of Britain's quirks and culture, Mon 24 - Sat 29 June, Talisman Theatre & Arts Centre, Kenilworth



Saije - Temperance, Leamington Spa

forest live

CANNOCK CHASE FOREST

Staffordshire

ANNE-MARIE

Thursday 27 June

**THE CHARLATANS
+ JOHNNY MARR**

With special guest **Gaz Coombes**

Friday 28 June

OLLY MURS

Support from **Daniel Bedingfield**

Saturday 29 June

forestlive.com

Buying tickets from Forestry
England helps to grow and
protect our nation's forests.

We plant over
7 million
trees
in England
each year



Forestry England

In partnership with:

LIVE NATION

CUFFE AND TAYLOR

APPLE OF MY EYE A one-man musical telling the life story of Apple co-founder Steve Jobs. Part of Festival on The Close, Tues 25 June, Macready Theatre, Rugby

LEMONS LEMONS LEMONS LEMONS Rugby School Theatre & Performing Arts Department present Sam Steiner's play - an examination of a world where we're forced to say less. Part of Rugby's Theatre On The Close, Tues 25 June, The Macready Theatre, Rugby

THE SYNDICATE Kay Mellor comedy-drama following the change in fortune of five supermarket employees. Samantha Giles (Emmerdale) and Brooke Vincent (Coronation Street) star. Gaynor Faye directs, Tues 25 - Sat 29 June, The Alexandra, Birmingham



THE MOUSETRAP Todd Carty and Gwyneth Strong star in Agatha Christie's world-famous murder mystery, Tues 25 - Sat 29 June, Wolverhampton Grand Theatre

PARTY GAMES! Matthew Cottle, Debra Stephenson & Ryan Early star in an acerbic new comedy by Michael McManus, Tues 25 - Sat 29 June, Malvern Theatres

HAMILTON Lin-Manuel Miranda's multi-award-winning musical tells the story of America's Founding Father, Alexander Hamilton, Tues 25 June - Sat 31 Aug, Birmingham Hippodrome



THE WAITING ROOM Moon Kim's 'eccentric and surreal piece' uses 'physicality, dreamy words and a strange song about watermelons' to explore relationships and attachment, Wed 26 June, Old Joint Stock Theatre, Birmingham

THE MOST HAPPY New 30-minute musical from Rugby School Theatre & Performing Arts student Louisa Roberts which considers how easy it is for male-dominated narratives to shape our understanding of the past. Part of Rugby's Festival On The Close, Wed 26 June, Macready Theatre, Rugby

JULIUS CAESAR 2024 One of the most famous political coups in history gets the Oddssocks treatment, Wed 26

June, Avoncroft Museum, Bromsgrove

SHREK THE MUSICAL Warwick School present an all-singing, all-dancing production based on the popular Dreamworks movie, Wed 26 - Fri 28 June, Bridge House Theatre, Warwick

'FLO' SMITH - NOW AND THEN Ursula Mohan's single-hander tells the true story of a 'remarkably normal woman'. Based on Christopher Saul's book, which recalls conversations with his grandmother, Flo Smith, Thurs 27 June, Number 8, Pershore

THE LITTLE MERMAID Amateur stage version of the Disney classic, Thurs 27 - Sat 29 June, Benn Hall, Rugby

BUGSY MALONE Kidderminster Operatic & Dramatic Youth Section present an amateur stage version of Alan Parker's hit film, Thurs 27 - Sat 29 June, The Rose Theatre, Kidderminster

HARLEQUIN'S BUSY DAY A new play inspired by Carlo Goldini's A Servant Of Two Masters, Thurs 27 - Sat 29 June, The Bear Pitt Theatre, Stratford-upon-Avon

VOICES OF EVIL 'Horri-fying' debut show from the award-winning 'poo-f prince of puppets'. Expect your worst nightmares to come to life in a ceremony of paranormal tricks and treats, Sat 29 - Sun 30 June, Old Joint Stock Theatre, Birmingham

MISS JULIE Playbox Theatre present an amateur version of August Strindberg's exploration of class, desire and power, Sat 29 - Sun 30 June, The Dream Factory, Warwick

Dance

NADIYA AND KAI: BEHIND THE MAGIC Brand-new show in which the Strictly couple invite audiences into their world, sharing their personal journeys through the world of dance, Mon 24 June, Symphony Hall, Birmingham

FLAWLESS Performance by the award-winning street dance company and stars of Britain's Got Talent. Part of Rugby's Festival On The Close, Tues 25 June, The Tandem Outdoor Theatre, Rugby

BALLET CYMRU: ROMEO A JULIET Choreographed version of 'the world's greatest love story', Fri 28 June, The Roses, Tewkesbury

THE XPERIENCE! Footwrx Dance Company showcase a variety of dance styles, performed by students aged two through to adults, Sat 29 - Sun 30 June, Belgrade Theatre, Coventry

DR DOLITTLE - THE DANCE SHOW Bi-annual event presented by Leamington & Warwick Academy of Dance, Sat 29 - Sun 30 June, Royal Spa Centre, Leamington Spa

Light Entertainment

WEST END TO BROADWAY Students from Rugby School present a showcase of musical theatre's greatest numbers. Part of Rugby's Festival On The Close, Mon 24 June, Macready Theatre, Rugby

TALES FROM THE SOLANA & BEYOND An evening with Tim Healy, Sherrie Hewson & Crissy Rock, Mon 24 June, The Albany Theatre, Coventry

STOMP: STUDENT STOMPERS Members of the world-famous percussion-dance-theatre sensation perform live with over 100 local school students. Part of Rugby's Festival On The Close, Tues 25 June, The Tandem Outdoor Arena, Rugby

BOLLYWOOD TIME MACHINE An evening of laughter, dance and timeless melodies, Sat 29 June, The Core, Solihull

DIVA OF THE DECADES! Celebrating the powerhouse voices and iconic performances of the biggest divas in music history, Sat 29 June, The Dovehouse Theatre, Solihull

BEYOND BROADWAY Featuring hits from West End and Broadway musicals, with guest performances by West End stars, Sun 30 June, The Alexandra, Birmingham

Talks & Spoken Word

IN CONVERSATION WITH SIR GREGORY DORAN: MY SHAKESPEARE A director's journey through the First Folio. Part of Rugby's Festival On The Close, Tues 25 June, Macready Theatre, Rugby

Events

STOWE VALLEY AND FRIENDS ARTS FESTIVAL 2024 Pupils from schools in the Stowe Valley Multi-Academy Trust - as well as a few other like-minded schools - showcase their talents and skills, Wed 26 June, Belgrade Theatre, Coventry

THE WORLD OF PARK & LEISURE HOMES SHOW 2024 Find out more about the park & leisure home lifestyle, Fri 28 - Sun 30 June, NAEC Stoneleigh

OUTDOOR CINEMA AT COUGHTON COURT Watch and sing along to a blockbuster movie in the great outdoors, Fri 28 - Sun 30 June, Coughton Court, Warwickshire

ADVENTURE BIKE RIDER FESTIVAL 2024 Featuring trails, test-ride areas, off-roading, road ride-outs and live music, Fri 28 - Sun 30 June, Ragley Hall, Warwickshire

1960S EVENING Enjoy 1960s music,

see vintage vehicles, check out 60s fashion trends, and dance the night away with some of the decade's most famous characters, Sat 29 June, Black Country Living Museum, Dudley

GATECRASHER OUTSIDE PRESENTS TRANCE CLASSICAL Featuring 'some of the biggest tracks on the planet', performed by a 35-piece orchestra accompanied by live vocalists, Sat 29 June, Hartlebury Castle, Worcestershire

NETBALL SUPER LEAGUE GRAND FINAL 2024 The top four teams from the UK's elite domestic netball competition come together for one final day to decide the placings for the season, Sat 29 June, Resorts World Arena, Birmingham

BIRMINGHAM RUM FESTIVAL A celebration of the finest rums from around the world, Sat 29 June, The Cuban Embassy, Moseley

TAKE OFF FLIGHT BUSKING Find out which wing shape keeps your paper plane in the air the longest, and which flies the furthest, Sat 29 June, Thinktank Birmingham Science Museum

MURDER MYSTERY | LIGHTS! CAMERA! MURDER! Enjoy a glamorous evening out as Hollywood drama comes to The Commandery for one night only, Sat 29 June, The Commandery, Worcester

STEP BACK TO THE 1940S BIG BAND SATURDAY NIGHT SHOW Hosted by the 20-piece Kalamazoo Dance Band alongside special guests, Sat 29 June, Severn Valley Railway, Bewdley, Nr Kidderminster

SUFFOLK PUNCH WEEKEND Weekend of displays, classes and parades, with unique stands and stalls also featuring, Sat 29 - Sun 30 June, Cotswold Farm Park, Cheltenham

STEP BACK TO THE 1940S Step back in time as you travel by heritage steam train to each station, Sat 29 - Sun 30 June, Severn Valley Railway, Bewdley, Nr Kidderminster

SHREWSBURY FOOD FESTIVAL 2024 Bringing together independent food producers, quality street-food vendors, top chefs, local brewers, and distillers, Sat 29 - Sun 30 June, The Quarry Park, Shrewsbury

DUCK HERDING Duck-herding displays, complete with audience participation, Sun 30 June, Eastnor Caste

Festivals

UPTON JAZZ FESTIVAL Line-up includes Panama Quartet, Dave Bronwing's Jazzcats, ArtDeco Hot Jazz Orchestra, Fri 28 - Sun 30 June, various venues in Upton-upon-Severn, Worcestershire

Competitions

WIN! with What's On...

Enter now at whatsonlive.co.uk to be in with a chance of bagging one of these fabulous prizes!



Win! A family ticket to see Peppa Pig's Fun Day Out!

Packed full of singing and dancing (and muddy puddles!), Peppa Pig's Fun Day Out guarantees giggles and snorts for all Peppa fans - and provides a perfect introduction to theatre for your little ones. We have a family ticket (4 tickets) to give away for this oinktastic stage show when it stops off at The Alexandra, Birmingham, on Wednesday 31 July.

Competition closes Friday 19 July



Win! Two adult weekend camping tickets to this summer's Shrewsbury Folk Festival!

Shrewsbury Folk Festival returns late summer (West Mid Showground, Friday 23 - Monday 26 August) with four days of folk, Americana, blues and world music.

We are offering one reader the chance to win two adult weekend camping tickets for this year's get-together.

Competition closes Monday 5 August



Win! Two tickets to see Girls Aloud in concert!

Celebrating 22 years since their Popstars: The Rivals win, Girls Aloud have come together for a huge arena tour. The eagerly anticipated shows will feature all of the band's greatest hits, including the chart-topping Sound Of The Underground, The Promise and I'll Stand By You... We have two tickets to give away to see the girls perform at Birmingham's Resorts World Arena on Thursday 20 June.

Competition closes Friday 14 June



Win! Two tickets to see 101 Dalmatians: The Musical!

Telling the story of fashionista Cruella de Vil's wicked attempts to swipe all the Dalmatian puppies in town and create a fabulous fur coat for herself, this hit musical visits the region direct from London's West End and stars Kym Marsh as Cruella.

We have two tickets to give away for the show when it stops off at The Alexandra, Birmingham, on Tuesday 2 July.

Competition closes Friday 21 June

For your chance to WIN! with What's On, visit:
whatsonlive.co.uk

LIVE EVENTS IN SHREWSBURY

JUNE/JULY/AUG 2024

THE BUTTERMARKE SHREWSBURY



LONDON CALLING
play
THE CLASH
'GIVE 'EM ENOUGH ROPE'
45th Anniversary Tour

FRI 7 JUNE

THE DEFINITIVE TRIBUTE TO
QUEEN

★★★★★
"ATMOSPHERE WAS EXPLOSIVE!"
JAM SKINERS
Official Queen Biographer

★★★★★
"SOUNDS JUST LIKE FREDDIE!"
ADAM LAMBERT
Queen & Adam Lambert

WHY BE JAILING THE UK BY STOPPING
DON'T STOP
QUEEN
NOW

FRI 14 JUNE

I'M EVERY
WHITNEY

STARRING KIESHIA CHUN & HER MILLION DOLLAR LIVE BAND

★★★★★
"OUTSTANDING"
★★★★★
"PERFECT VOCALS"

FRI 21 JUNE

SKA
Outdoor Festival

LIVE ON STAGE!

THE SUPERSKAS

SAT 22 JUNE

NIRVANAH

FRI 28 JUNE

A Country Night in
NASHVILLE

STARRING DOMINIC HALLPIN & THE HURRICANES

SUN 30 JUNE

THE UK'S No.1 TRIBUTE TO THE ARCTIC MONKEYS

ANTARCTIC MONKEYS

FRI 5 JULY

The Jam

FRIDAY 12 JULY

FRIDAY 19 JULY

THE RONALDOS
SUMMER FIESTA

THE DEVOUT

FRIDAY 19 JULY

GREATEST HITS SHOW

DEPECHE MODE

Europe's Leading Depeche Mode Tribute Band

TRIBUTE

STEVE HUGHES

SAT 20 JULY

FRIDAY 26 JULY

JUST RADIOHEAD

THE UK'S DEFINITIVE TRIBUTE TO RADIOHEAD

BRAND NEW FOR 2024

MORGAN WALLEN

SUN 28 JULY

TRIBUTE UK

Entertainment or Death Tour 2024

MOTLEY CRUE

2 AUG

KISS THE SEX MACHINE GUNS

"OUTSTANDING"

DESPERADOS

FRIDAY 9 AUGUST

CELEBRATING THE MUSIC & LEGACY OF THE EAGLES

THE ULTIMATE GIRLS NIGHT OUT

FORBIDDEN PLEASURE

THE MALE REVUE SHOW

FRIDAY 16 AUGUST

HARRY STYLES

THE OUTDOOR Party

SAT 17 AUG

STARRING A LOT OF PHOTOGRAPHY & A LOT OF 'HARRY STYLED'

TOTAL REX

T-REX TRIBUTE

SUN 18 AUG

CELEBRATING THE MUSIC OF AMY WINEHOUSE

AMY
a Tribute

BACK TO BLACK TOUR

FRIDAY 23 AUG

SUN 25 AUG

CELEBRATING THE MUSIC OF
KENNY ROGERS

STARRING PETER WHITE
PLUS:
RYAN EVANS TOM BYRNE

THE WORLD'S GREATEST CELEBRATION AND TRIBUTE TO THE LIFE & WORK OF NEIL DIAMOND.

Hello Again

THE NEIL DIAMOND SONGBOOK

★★★★★
"a spellbinding recreation of a Neil Diamond Concert"
NOTTINGHAM POST

★★★★★
"Absolutely mesmerising"
WHY?

FRI 30 AUG

SUN 08 SEPT

FAULTY TOWERS
Original
the Dining Experience

SUN 10 NOV

IN THE NAME OF LOVE

THE
DIANA ROSS
STORY

12 SEPT

MAGGIE MAY

THE ROD STEWART YEARS

13 SEPT

THU 18 JULY, DOOR @ 5.30PM

THE MUSIC OF
HANS ZIMMER
vs
JOHN WILLIAMS

HARRY POTTER • JURASSIC PARK • STAR WARS
PIRATES OF THE CARIBBEAN • TOP GUN
THE DARK KNIGHT RISES • BATMAN BEGINS
GLADIATOR • SUPERMAN • INDIANA JONES
THE LION KING • INTERSTELLAR • E.T.



FRI 19 JULY, DOOR @ 5.30PM



McFLY

PLUS SPECIAL GUESTS
THE HOOSIERS
ELVANA

SAT 20 JULY, DOOR @ 5.30PM



MINISTRY OF SOUND
CLASSICAL

PLUS SPECIAL GUESTS
SIGMA
FREEMASONS (RUSSELL SMALL)

SUN 21 JULY, DOOR @ 5.30PM



**NOEL GALLAGHER'S
HIGH FLYING BIRDS**

PLUS SPECIAL GUESTS

JOHNNY MARR

The WAEVE (Graham Coxon & Rose Elinor Dougall)

WARWICK CASTLE

warwickcastlelive.co.uk

