

Staffordshire

ISSUE 449 JUNE 2024

# What's On

FILM | COMEDY | THEATRE | GIGS | VISUAL ARTS | EVENTS | FOOD [staffordshirewhatson.co.uk](http://staffordshirewhatson.co.uk)



 **gatehouse theatre**   
*William Shakespeare's*

# TWELFTH NIGHT

*A Cornish Tale*  
June 21 - July 7

Natalie Anderson Seann Walsh Molly Windsor

Box Office 01785 619080 [gatehousetheatre.co.uk](http://gatehousetheatre.co.uk)

## inside:

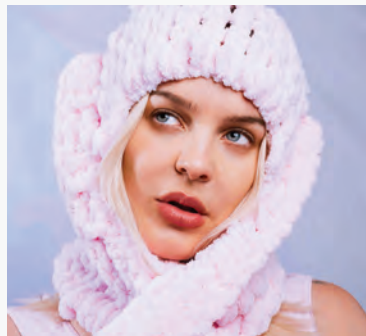
### TERRIFYING TALES

chilling showcase Uncanny visits Stoke-on-Trent



### BACK TO NATURE

Anne-Marie takes to the stage in Cannock Chase Forest



### CULINARY DELIGHTS

BBC Good Food Show Summer returns to the NEC







Birmingham  
Museums

# VICTORIAN



Showing  
until  
31 Oct

# RADICALS

From the Pre-Raphaelites to the Arts and Crafts Movement  
Gas Hall, Birmingham Museum & Art Gallery

[birminghammuseums.org.uk](http://birminghammuseums.org.uk)



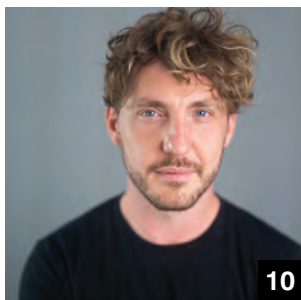
Birmingham  
City Council



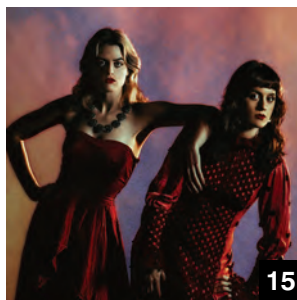
Supported using public funding by  
**ARTS COUNCIL  
ENGLAND**



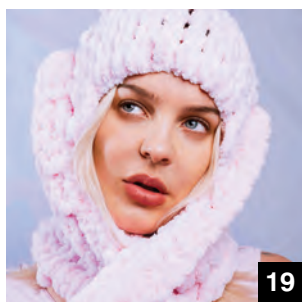
04



10



15



19



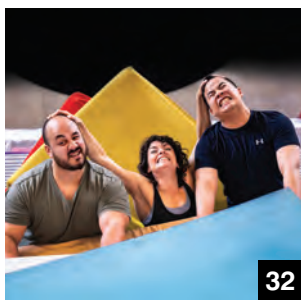
21



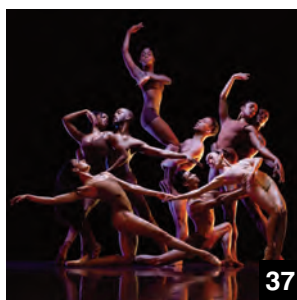
22



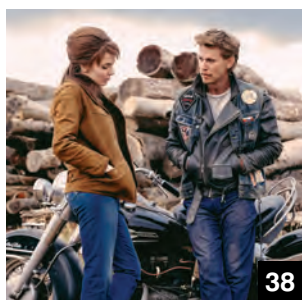
24



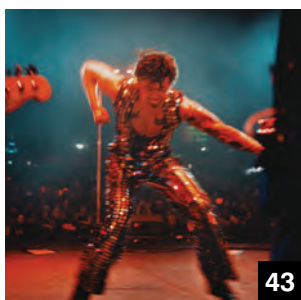
32



37



38



43



45

### INSIDE:

First Word

4

Gigs

15

Festivals

19

Comedy

21

Theatre

24

Dance

37

Film

38

Visual Arts

43

Events

45

### Follow us at:



whatsonshropshire  
staffordshirewhatson  
whatsonwolverhampton



@whatsonshops  
@whatsonstaffs  
@whatsonwolves



@whatsonshropshire  
@whatsonstaffs  
@whatsonwolves

## What's On

MEDIA GROUP

**Jessica Clixby** jessica@whatsonlive.co.uk Subscriptions: subscriptions@whatsonlive.co.uk 01743 281714  
Contributors: Graham Bostock, Diane Parkes, Patsy Moss, Steve Adams, Sue Hull, Reggie White, Sue Jones, Liz Day, Carol Lovatt  
Publisher and CEO: **Martin Monahan** Accounts Administrator: **Julia Perry** julia@21stdc.com 01743 281717

This publication is printed on paper from a sustainable source and is produced without the use of elemental chlorine. We endorse the recycling of our magazine and would encourage you to pass it on to others to read when you have finished with it.

All works appearing in this publication are copyright. It is to be assumed that the copyright for material rests with the magazine unless otherwise stated. No part of this publication may be reproduced, or stored in an electronic system, transmitted in any form or by any means, electronic, mechanical, photocopied, recording or otherwise, without the prior knowledge and consent of the publishers.







## CS Lewis classic returns to Midlands theatres

A celebrated stage adaptation of CS Lewis' *The Lion, The Witch And The Wardrobe* will visit two Midlands venues next year as part of a major new tour.

The show will play Birmingham theatre The Alexandra from Tuesday 27 to Saturday 31 May and Stoke's Regent Theatre from Tuesday 3 to Saturday 7 June.

Commenting on the news, the production's director, Michael Fentiman, said: "The show celebrates the magic of live theatre and is led by a multi-talented cast of actors, singers, musicians, dancers and puppeteers. It is a celebration of the possibilities of the collective imagination and the boundless wonders of individual skill." For further information about the show and to book tickets, visit [lionwitchonstage.com](http://lionwitchonstage.com)

## Colour Run fun as event makes its Telford debut

A popular and colourful (and messy!) fun run will this summer take place in Telford for the first time.

Following the success of recent Colour Runs held in Newtown in Mid Wales and Shrewsbury, Lingen Davies Cancer Fund is now gearing up to give the people of Telford the chance to get covered in colourful powder while helping raise money for the charity. The 5k run takes place at the Apley Estate in Norton, near Shifnal, on Saturday 17 August. Visit [lingendavies.co.uk](http://lingendavies.co.uk) to find out more and sign up for the event.



## New date for Bike4Life Ride Out & Festival

Midlands Air Ambulance Charity has announced Sunday 1 September as the date for its rescheduled 2024 Bike4Life Ride Out & Festival.

Following one of the wettest winters on record, the event was postponed in April due to safety concerns.

To find out more about the rescheduled get-together, visit the website: [bike4lifefest.com](http://bike4lifefest.com)

## University to host special SciFest community day

The University of Wolverhampton is once again hosting its annual Science, Technology, Engineering & Maths (STEM) festival.

Titled SciFest, the event features a special 'community day' at the university on Saturday 29 June, during which 'young learners and adults of all ages have the opportunity to explore STEM as they have never seen before'. To find out more about SciFest, visit [wlv.ac.uk](http://wlv.ac.uk)

## New children's festival launches in Biddulph

A celebration of children's books will take place at Biddulph Old Hall on Friday 12 & Saturday 13 July.

Titled The Festival Of Brilliant, the event will feature 'readings, talks, workshops, performances, installations and activities to feed the imagination'.

To find out more, visit [outsidearts.org](http://outsidearts.org)

## Gill Jordan to star in Lichfield Garrick panto

Gill Jordan - better known as her much-loved and now-retired Black Country character, 'lazy cow' Doreen Tipton - has signed up to appear in Lichfield Garrick's

2024/25 pantomime production of *Jack And The Beanstalk* (Friday 22 November - Sunday



5 January).

Joining Garrick panto regular Sam Rabone in the show, Gill will take the role of Fairy Sugarsnap. To find out more and book your tickets, visit [lichfieldgarrick.com](http://lichfieldgarrick.com)

## 'Time' the theme for 2024 Shrewsbury Arts Trail

Shrewsbury's Art Trail returns next month (Shrewsbury Museum & Art Gallery, from Monday 8 July), taking the theme of 'Time' and featuring work by, among others, Salvador Dali, David Hockney, Damien Hirst and Tracey Emin.

Workshops, an open exhibition and a brand-new Infinity Cube immersive experience also feature - as does an all-British female sculpture trail, including works by Halima Cassell, Alice Irwin and Almuth Tebbenhoff. More information is available by visiting the website: [shropshiremuseums.org.uk](http://shropshiremuseums.org.uk)

## Plans announced for new Black Country music hub

Arts Council England has confirmed that the Black Country will be one of 43 hubs taking part in an ambitious national programme which aims to provide high-quality music education for all children and young people. Dudley Council has been appointed the lead organisation for the hub and will work closely with music services in Walsall and Wolverhampton councils, and with SIPS Music & Education service in Sandwell. It will receive £1.9million from the Department of Education to coordinate music education in the region.



## Harry on tour...

Harry Hill is heading out on tour early next year and will be stopping off at a number of Midlands venues.

Harry's latest show, New Bits & Greatest Hits, sees the big-collared comedian 'offering new insights into the hot topics of the day, including the demise of the SCART lead, the 'culture wars', the differences between crabsticks and rhubarb, and the origins of Tiramisu'.

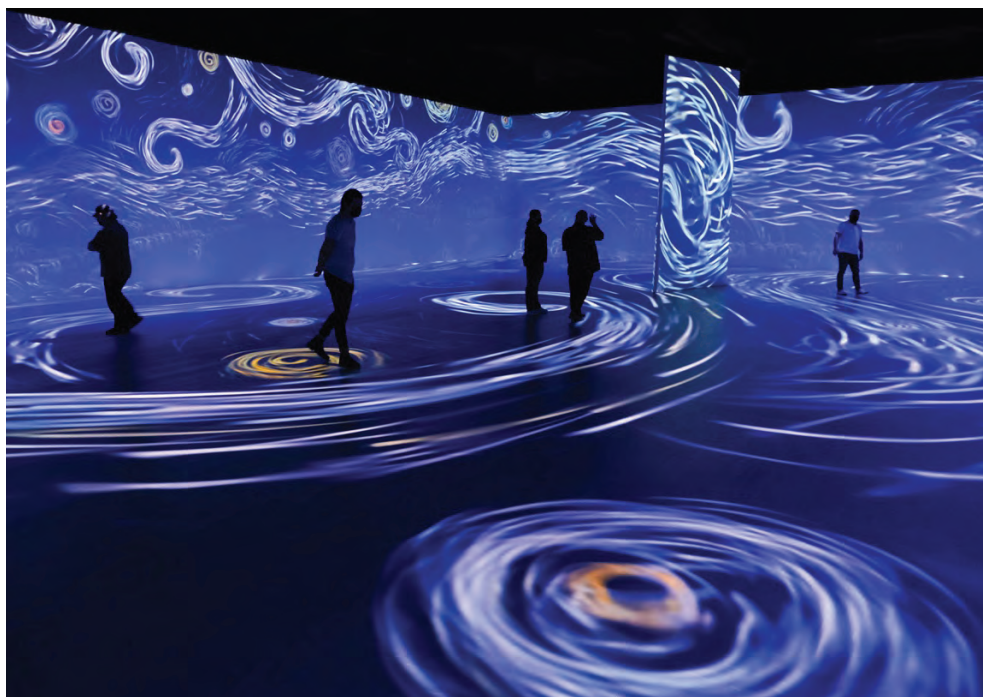
To find out where and when Harry is appearing in the region, visit [harryhill.co.uk](http://harryhill.co.uk)



## 'Naked' Terry set to confess...

Outspoken TV presenter Terry Christian will visit Telford next month with his new stand-up offering, Naked Confessions Of A Recovering Catholic. Described by its publicity as 'a hilarious romp through Terry's troubled inner-city Manchester childhood', the show takes place at Embers Cafe in Coalbrookdale on Friday 12 July.

Ticket information is available at [skiddle.com](http://skiddle.com)



## Van Gogh touring exhibition stopping off in the Midlands

A multimedia touring show celebrating Vincent van Gogh's life and work is visiting Birmingham this summer.

Beyond Van Gogh: The Immersive Experience will show at the NEC from Thursday 1 August to Sunday 1 September. Combining more than 300

of the artist's paintings with cutting-edge technology and a specially curated soundtrack, the 'stunning sensory extravaganza' has so far been viewed by more than five million people across the world... To find out more about the show, visit the website [thenec.co.uk](http://thenec.co.uk)

## Oswestry balloons take to the skies



Oswestry Balloon Carnival returns to the town's Cae Glas Park on Saturday 17 & Sunday 18 August. The popular show will feature hot-air balloons, family fun, entertainment and 'delicious refreshments'. Check out [oswestryballooncarnival.info/](http://oswestryballooncarnival.info/) for details.



## Gladiator Giant to star in Beauty And The Beast at Wolverhampton Grand

Gladiators star Giant has joined the cast of this year's Wolverhampton Grand Theatre pantomime production of Beauty And The Beast. The Midlands-born 6ft 5inch star of the hit BBC television series will take on a 'villainous new role' in the family-friendly panto, which runs at the venue from Saturday 30 November to Sunday 5 January. For further information and to purchase tickets, visit [grandtheatre.co.uk](http://grandtheatre.co.uk)

## Musicals celebration to raise cash for homeless

Shrewsbury's Blackburn Theatre at Prestfelde School is this month playing host to a celebration of much-loved musicals. Taking place at the venue on Saturday 15 June, A Night At The West End features songs from shows including Les Misérables, Mamma Mia!, West Side Story and Billy Elliot, all performed by four professional actors. All profits will go to the Shrewsbury Ark day centre for the homeless. For further information and to book your seat, visit [ticketsource.co.uk](http://ticketsource.co.uk)

## The Beach is back at Lichfield Cathedral

Lichfield Cathedral's free-to-attend summertime beach attraction is making a return for the school summer holidays. Boasting sand (of course!), decking, deck chairs and children's activities, The Beach is available to enjoy from Wednesday 24 July to Sunday 1 September. To check out the attraction's programme of associated events, visit [lichfield-cathedral.org](http://lichfield-cathedral.org)



## Wild food festival debuts at Hawkstone Park

Popular Shropshire venue Hawkstone Park is this month hosting the first British Wild Food Festival. Running on Saturday 8 & Sunday 9 June, the event will feature a range of activities, workshops, talks and demonstrations. Commenting on the new attraction, its founder, Samantha Webster, said: "The start of summer is the perfect time for a festival, and the best type of festival is a foodie festival surrounded by nature. The day can be full of the hustle and bustle of activity, or you can take it slow and relax in the forest bathing areas, listening to bird song and the gentle breeze in the trees." To buy tickets for the event, visit the website at [britishwildfoodfestival.com](http://britishwildfoodfestival.com)



## Midlands stop-off for Disney's Road Trip Adventures

Grab your mouse ears and get your skates on - Disney On Ice is heading back to Birmingham with a brand-new show! Titled Road Trip Adventures, the production features new and classic tales, world-class

skating, high-flying acrobatics and up-close character interactions. The show stops off at Utilita Arena from Wednesday 30 October to Sunday 10 November. For more information and tickets, visit [utilitaarenabham.co.uk](http://utilitaarenabham.co.uk)

## New printmaking festival in Wolverhampton

A new printmaking festival will launch in the Black Country later in the year. Showcasing the work of printmakers throughout the region and beyond, Print Fest Wolverhampton will run at Newhampton Arts Centre from Friday 8 to Sunday 10 November. Applications are now open for printmakers looking to exhibit their work. An application form can be accessed by visiting [clasherwen.com/printfestwolverhampton](http://clasherwen.com/printfestwolverhampton)

## Tribute acts to top bill at Shrewsbury Flower Show

Tributes to Mumford & Sons and Take That will entertain evening visitors to this year's Shrewsbury Flower Show.

Chasing Mumford will headline the Friday evening, with Take That Live Tribute taking to the stage the following night. Tickets to the two-day show - which is being held on Friday 9 & Saturday 10 August in the town's Quarry Park - are available via the website: [shrewsburyflowershow.org.uk](http://shrewsburyflowershow.org.uk)



## BRB take over BMAG's Waterhall

If you've ever fancied finding out more about the operations of one of the country's most acclaimed ballet companies, then now's your chance.

Birmingham Royal Ballet (BRB) has announced a short residency at Birmingham Museum & Art Gallery's (BMAG) Waterhall Gallery (Wednesday 26 June - Tuesday 2 July), during which various aspects of life in a ballet company - both on and off stage - will be showcased.

An exhibition, demonstrations, the chance to watch and join in dance classes, and an introduction to making your very own tutu, all feature.

A special Night At The Museum event is also planned, offering visitors the chance to enjoy both BMAG's Victorian Radicals exhibition and a series of short performances, including the world premiere of a new work by BRB dancer Olivia Chang Clarke. For further information and to book tickets, visit [brb.org.uk](http://brb.org.uk)





# B:Music

Town Hall & Symphony Hall



@bmusicltd



@bmusic\_ltd



0121 7803333

## Richard Thompson: Ship to Shore

03 June | Symphony Hall



## Between The Covers: Live

04 June | Town Hall



## Collabro: 10th Anniversary Reunion Concert

07 June | Symphony Hall



## Fanna-Fi-Allah Sufi Qawwali

07 June | Town Hall



## Britpop Classical

08 June | Symphony Hall



## Bhangra Symphonica

08 June | Town Hall



## Disney in Concert: The Sound of Magic

11 June | Symphony Hall



## Shalamar: Greatest Hits

14 June | Symphony Hall



## Nadiya & Kai: Behind The Magic

24 June | Symphony Hall



JUST ANNOUNCED

## B:Classical 2024/25

Various Dates | Symphony Hall

**Highlights Include:** Nuremberg Symphony Orchestra  
Hungarian Radio Symphony Orchestra | German  
National Orchestra | Vasily Petrenko & The Royal  
Philharmonic Orchestra & many more!

# bmusic.co.uk

There's something for  
everyone this June!



## Coracle Championships set to make a splash

The Coracle World Championships are set to return to the River Severn in Shrewsbury this autumn.

Raising funds for Macmillan Cancer Support, the event will take place at the town's Pengwern Boat Club on Friday 13 September. Entries are now officially open, with up to 48 teams able to take part.

If you're interested in participating, visit [coracleworldchampionship.co.uk](http://coracleworldchampionship.co.uk)



## New exhibition opens at the National Arboretum

The National Memorial Arboretum in Staffordshire has launched a new commemorative exhibition that uses personal stories to explore the events of a key year during World War Two.

Titled *The Year Was 1944*, the exhibition takes visitors on an 'interactive and sensory journey', using photographs, artefacts and music to tell real people's stories about life on the home front and the battlefield during what proved to be a year of seismic change.

## Sand Castles in Stoke

Stoke Rep Players return to the stage this month to present *Sand Castles*, a 'quintessentially British comedy' by television screenwriter Bob Larbey.

Larbey, who died in 2014 aged 79, was best known for his work alongside John Esmonde, with whom he wrote TV sitcoms *Please Sir!*, *Ever Decreasing Circles* and, most memorably, *The Good Life*.

*Sand Castles* runs at the Stoke Rep Theatre from Tuesday 11 to Saturday 15 June.

For more information and to buy tickets, visit the website at [stokereplayers.co.uk](http://stokereplayers.co.uk)



## Four summer concerts at Warwick Castle next month

Midlands music lovers will no doubt be heading to Warwick Castle in their droves next month, when the popular visitor attraction hosts a series of summer concerts. Kickstarting the programme of gigs on Thursday 18 July is the London Concert Orchestra, who will be performing the music of Hollywood composers Hans Zimmer and John Williams. The following night it's the turn of McFly, with special guests The

Hoosiers, to entertain the masses, before London Concert Orchestra return on Saturday the 20th to perform 'ultimate dance hits from the 90s'.

The castle's summer concert season is then rounded off on Sunday the 21st by Noel Gallagher's High Flying Birds, with special guests Johnny Marr and The WAEVE.

For more information and to book tickets, visit [premier.ticketek.co.uk](http://premier.ticketek.co.uk)

## Acclaimed Canadian folk band to play in the Shire

Critically acclaimed Canadian folk band The Fugitives will play a concert in Shrewsbury as part of their forthcoming UK tour. The talented quartet stop off at the town's St Mary's Church on Thursday 4 July. To book your seat for the gig, visit [wegottickets.com](http://wegottickets.com)

## RuPaul star to headline Dudley Pride event

RuPaul's Drag Race UK star Baga Chipz will headline this year's Dudley Pride. Taking place in Stone Street Square on Saturday 20 July, the event will also feature appearances by Birmingham's Rainbow Voices choir, Word Of Mouth DJ Stuart Ojelay, X Factor finalist Georgia Burgess, and drag Queen Trixie.

To find out more, visit [dudleypride.org.uk](http://dudleypride.org.uk)



## Living Well in the Quarry

A company which provides mushroom tinctures for medicinal purposes will be front and centre at Shrewsbury's Living Well Festival next month.

The free-to-attend event, taking place in the town's Quarry Park on Saturday 27 July, is being hosted by Mama's Cottage Mushrooms - aka Kate Schenk and Matty Brookes - and will feature 70-plus exhibitors and a wide range of health & wellbeing practices.

## New Vic to benefit from Arts Council funding

Newcastle-under-Lyme's New Vic Theatre is to receive £175,000 from Arts Council England's Government-funded Capital Investment Programme.

The money will help the theatre make significant reductions in energy and carbon usage, as well as ongoing running costs.





# WORLD CLASS ENTERTAINMENT

ATG  
TICKETS

## Regent Theatre



Exploring life, clay,  
and...everything!

### Keith Brymer Jones Live

Sun 2 Jun



The biggest live investigation  
into the paranormal

### Uncanny: I Know What I Saw

Wed 3 Jul



Michael Flatley's  
**Lord of the Dance –  
A Lifetime of  
Standing Ovals**

Fri 6 - Sun 8 Sep



Awake your deepest fantasies

### Dreamboys

Thu 6 Jun



Pretty romantic, Pretty magical

### Pretty Woman The Musical

Mon 15 – Sat 20 Jul



The journey has only  
just begun

### Tim Peake – The Quest To Explore Space

Wed 11 Sep

## Victoria Hall



World-renowned singer,  
songwriter and guitarist

### Richard Thompson

Sat 1 Jun



Set The Controls Tour

### Nick Mason's Saucerful of Secrets

Tue 11 Jun



Live Stand Up tour

### Ed Gamble: Hot Diggity Dog

Thu 6 Jun



Live on the Big Screen

### Euros 2024 – England vs Serbia

Sun 16 Jun

A portrait of comedian Seann Walsh, a man with curly brown hair and a light beard, wearing a black t-shirt, looking directly at the camera against a grey background.

# FROM STAND-UP TO SHAKESPEARE

**Comedian Seann Walsh talks about starring in a  
Cornish-themed version of Shakespeare's Twelfth Night...**



## Seann Walsh plays Malvolio in a new Cornish-themed production of Twelfth Night at Stafford's Gatehouse Theatre this month and next. Although it will be the award-winning comic's first-ever experience of performing Shakespeare, his switch from stand-up comedy to taking to the stage in a play by the Bard isn't as unlikely a move as you might think - as he explains to What's On...

It's been an interesting few years for stand-up comedian Seann Walsh, and 2024 is proving to be no exception, as he embarks on what appears to be quite a dramatic (pun sort-of intended) career shift into theatre.

The London-born, Brighton-raised comic might have appeared in sitcoms and even a comedy sci-fi movie, but stage acting is very much a new venture. So for his debut he's chosen the work of a little-known playwright: William Shakespeare...

Seann is playing Malvolio in *Twelfth Night: A Cornish Tale*, this summer's Stafford Shakespeare production at the town's Gatehouse Theatre. A new take on the Bard's classic comedy, the show also stars TV regulars Natalie Anderson and Molly Windsor as Olivia and Viola respectively.

The friendly comedian cheerfully acknowledges that the thought of him in a Shakespeare play might be a bit of a leap for audiences familiar with the shambolic style of his stand-up performances.

"It feels like Stephen Fry might be doing a gig in Butlins," he laughs, but is clearly taking the challenge seriously, having conquered some initial misgivings.

"When the idea first came about, I was extremely apprehensive and immediately thought, no, I can't do this," he admits. "But everyone I spoke to said 'go for it' and what a fantastic character Malvolio was. A lot of people said how well suited I would be to playing him, too. I wasn't aware of any of this at the time, so I had a change of heart and suddenly I desperately wanted to do it."

While he "completely understands" how unlikely the move might seem to the layman who only knows him as a stand-up comic, Seann is quick to point out that he's been performing for nearly 20 years.

"I've had regular parts in sitcoms, made my own things, done live read-throughs in front of audiences... so to me it's just 'what I do'. I think it's stranger for other people than it is for me."

Malvolio is a comedic character, of course, with director Sean Turner claiming Walsh's "singular comic talents are perfectly suited to the role". And the Gatehouse Theatre's

general manager, Gary Stevens, thinks he's perfect for the part: "I can't wait to see his natural humour mixed in with Shakespeare's comedy writing. There are going to be laughs galore, that's for sure."

For his part, Seann says he can't wait to play the "legendary comic character in arguably Shakespeare's funniest play" - especially as the more he's thought and read about it, the more it all makes sense.

"I would be lying if I said it wasn't daunting, but the thing is - and I'm just quoting other people here, but they're right - Shakespeare is not to be read, it's to be seen and to be performed. I thought there was going to be an entire process where I had to translate Shakespeare and deal with it as if I was taking on a different language, but that isn't the case. Once you say these things out loud, they completely make sense - the meaning is there in this beautiful wording. It's an absolute joy to speak and get your tongue around."

Although this version of *Twelfth Night* has a Cornish theme, the West Country accent is one thing the comic has creatively managed to avoid.

"Malvolio wasn't brought up there, let me tell you that!" he cackles. "I've done some deep, deep character research, and you'll find that Malvolio was actually brought up on the outskirts of Brighton, which is a fantastic coincidence!"

We both laugh at the idea that that's what swung the audition for him. He then reveals a pessimistic side when it comes to performing in front of others - even the stand-up gigs he's been doing since 2006.

"I've not had many auditions throughout my career - because I'm primarily a stand-up comedian - but I never turn up with the mindset that I'm going to get it. But I also don't turn up to any stand-up comedy gig like I'm going to have a wonderful time - I think everything's going to be an absolute disaster and it's up to me to try and overcome that. My life in many areas has proven that."

Seann also takes umbrage at the notion that he's considered to be something of a rock & roll comedian.

"It's certainly not something that was on my radar. When I was in my 20s, I talked about alcohol, nights out and hangovers, but I was only commentating on what most people in their 20s were doing. I've certainly never called myself a rock & roll comedian. I don't see myself like that, and I've *never* seen myself like that. I think it's because I wore a leather jacket and had long hair. I'm much more of a performer now anyway."

And a regular one at that, judging by how busy he's been in recent years. He's been touring ever since the end of lockdown, written and performed new shows at the Edinburgh Festival and beyond, and co-hosted regular podcasts with Paul McCaffrey and Jack Dee. Later this year he will return to the stage to play Yvan in a new touring production of award-winning comedy *Art*, written by Yasmina Reza and directed by Iqbal Khan.

Acting is clearly something he's really embracing, not least because it offers the chance to work as part of an ensemble. Despite having namechecked a number of friends in the comedy world, he instantly mocks my suggestion that there's camaraderie to be found in the stand-up profession too. "Is there?" he questions. "I'd love to find it!"

"I'll end up talking in cliches, but they're cliches for a reason. Stand-up is a wonderful thing, and one of the things that's wonderful about it is that you can do it alone - everything you do is up to you. The other side of that coin is that acting is gonna be great fun because we're all going to be doing what we can, and bringing what we can to the table, to make fantastic versions of these plays. I'm really looking forward to that. I've been on my own for years."

.....

**Twelfth Night: A Cornish Tale runs at the Gatehouse Theatre, Stafford, from Friday 21 June to Sunday 7 July.**  
**Art visits the Belgrade Theatre, Coventry, from Tuesday 15 to Saturday 19 October**



# ENTERTAINMENT

## CANNOCK CHASE

at the PRINCE OF WALES THEATRE

### JUNE

#### LIPSTICK ON YOUR COLLAR

Fri 14 June • 7.30pm • £26.00



#### WHAT'S LOVE GOT TO DO WITH IT?

Thurs 20 June • 7.30pm • £28.00



#### AMERICAN FOUR TOPS

Fri 21 June • 7.30pm • £27.00



#### DON'T STOP BELIEVIN'

Sat 22 June • 7.30pm • £28.50



### JULY

#### THE GLAM ROCK SHOW — GET IT ON

Fri 12 July • 7.30pm • £28.50

#### 90s LIVE

Fri 19 July • 7.30pm • £30.00



#### THE GREATEST STAR — BARBARA STREISAND TRIBUTE SHOW

Sat 27 July • 7.30pm • £25.00



### SEPTEMBER

#### LIONEL- THE MUSIC OF LIONEL RICHIE

Sat 7 September • 7.30pm • £27.00



#### RACHEL TUCKER

Wed 25 September • 7.30pm • £25.00



#### BIG GIRLS DON'T CRY

Fri 27 September • 7.30pm • £29.50



Inspiring  
healthy  
lifestyles



Box Office  
**01543 578 762**  
tickets.princeofwales.live



Brewhouse Arts Centre  
Union Street,  
Burton upon Trent  
DE14 1AA

BOOK ONLINE AT  
www.brewhouse.co.uk

Box Office & Information: 01283 508100



1 June, 2pm  
**Comedy  
Club  
4 Kids**  
Tickets: £10,  
Group of 4 £36



18 June, 2pm  
**Neil Sands:  
Thanks for  
the Memories**  
Tickets: £15



6 June, 7.30pm  
**Sam  
Sweeney  
Band**  
Tickets: £20



25 - 29 June, 7.30pm,  
& 2.30pm Sat matinee  
**Little Theatre  
Company:  
Shakespeare  
in Love**  
Tickets: £14-15



14 & 15 June, 7pm  
**Cabaret  
Theatre  
School: Back  
in Business**  
Tickets: £16



22 June, 7pm  
**Stephanie  
Parrott:  
La Fille Mal  
Gardée**  
Tickets: £12



Brewhouse  
Arts Centre



@brewhousecentre



Brewhouse Arts



@brewhouseartscentre



East  
Staffordshire  
Council

## EX CATHEDRA

JEFFREY SKIDMORE ARTISTIC DIRECTOR



## SUMMER MUSIC BY CANDLELIGHT

12-25 JUNE 2024

Unwind with an evening  
of enchanting music  
by candlelight.

Hereford Cathedral

St Peter's Church,  
Wolverhampton

St Chad's Church,  
Shrewsbury

St Paul's Church,  
Birmingham

St Martin-in-the-Fields,  
London

“a beautiful evening -  
just magical”

Audience member



Book now at  
www.excathedra.co.uk



ARTS COUNCIL  
ENGLAND



Birmingham  
City Council



Classical music from across the region...



## Ex Cathedra: Summer Music By Candlelight

St Peter's Collegiate Church, Wolverhampton, Thurs 13 June; St Chad's Church, Shrewsbury, Fri 14 June; St Paul's Church, Birmingham, Tues 18 June

Jeffrey Skidmore once again picks up the baton to conduct Birmingham's highly rated early music ensemble, on this occasion in a concert that Ex Cathedra confidently predict will see people heading for home singing of

summertime. The programmes for these annual get-togethers, presented by candlelight as dusk falls, move seamlessly from seasonal favourites to popular gems and accessible new music.

## An Evening With Anna Lapwood

Birmingham Town Hall, Thurs 20 June

With more than one million followers on social media, it's fair to say that Anna Lapwood is bringing the magic of the organ to the masses. Hailed by Gramophone as 'the dream ambassador for classical music', Anna is here performing a mix of her favourite traditional classical and contemporary music. Featured works include Hans Zimmer's *Interstellar*, The Da Vinci Code and *Inception*, Philip Glass' *Mad Rush*, Alan Menken's *Hunchback Of Notre Dame* and Claude Debussy's *Clair de lune*.



## Shrewsbury Festival Chorus & Sinfonia: The Dream Of Gerontius

Shrewsbury Abbey, Sat 29 June

Shrewsbury Cantata Choir and Shrewsbury Choral here come together - as Shrewsbury Festival Chorus - with Shrewsbury Sinfonia to perform Edward Elgar's *The Dream Of Gerontius*. Premiered at Birmingham Town Hall in 1900 - and widely considered to be the Worcestershire-born composer's finest choral masterpiece - the work is based on the same-named 1865 poem by John Henry Newman and recounts the journey of a pious man's soul after death. The performance is conducted by Cantata Musical Director Anthony Coupe.

## Madam Butterfly With CBSO & Kazuki Yamada

Symphony Hall, Birmingham, Sat 29 June

The City of Birmingham Symphony Orchestra's (CBSO) chief conductor & artistic advisor, Kazuki Yamada, is the man at the helm for this sure-to-be-impressive performance of a composition close to his heart.



Telling the story of a geisha girl who marries an American naval officer, only to find that he soon returns home and marries another, Puccini's *Madame Butterfly* has become one of the most popular operas of all time... The CBSO is joined for the concert performance by highly rated Japanese soprano Maki Mori (pictured).

## Stafford Sinfonia

Rising Brook Community Church, Stafford, Sat 22 June; Eccleshall, Holy Trinity Church, Eccleshall, Stafford, Sun 30 June

"Our orchestra is comprised of talented musicians from across the Midlands," explains the Stafford Sinfonia website, "and our concerts are a great way to experience the beauty of classical music. We believe in making music accessible to everyone and strive to ensure that our performances are enjoyable for all. "We hope you will join us at one of our concerts soon..."

A couple of opportunities for music lovers to do just that are available this very month, with the orchestra first performing on the 22nd, at Rising Brook Community Church, and then visiting Holy Trinity Church with this last-day-of-June offering. The concert programme features Emilie Mayer's *Faust Overture*, Grieg's *Holberg Suite* and Beethoven's fifth symphony.

## North Staffordshire Symphony Orchestra

St. John Fisher Catholic College, Newcastle-under-Lyme, Sat 22 June

North Staffordshire Symphony Orchestra here marks its 120th birthday with one of four major symphony concerts it will be presenting during 2024. The programme for the evening features Bruckner's *Overture in G minor*, Bruch's *Violin Concerto* and Brahms' fourth symphony.



**Plus 12 Dance Bands** 🌸

♣️ Ladysmith Black Mambazo ♣️ Elkie Brooks  
 ♣️ Gangstagrass ♣️ Mary Black  
 ♣️ Eric Bibb ♣️ Ward Thomas  
 ♣️ Jacqui McShee's Pentangle  
 ♣️ Beth Nielsen Chapman  
 ♣️ Mànran ♣️ Mary Gauthier  
 ♣️ The Longest Johns  
 ♣️ Peatbog Faeries ♣️ El Pony Pisador  
 ♣️ The Sentimentals & friends  
 ♣️ The Wandering Hearts  
 ♣️ Kathryn Tickell & The Darkening  
 ♣️ Le Vent du Nord ♣️ Dream in Colors  
 ♣️ The Celtic Social Club ♣️ Bella Hardy  
 ♣️ London Afrobeat Collective  
 ♣️ The Pleasures ♣️ Suntou Susso Band  
 ♣️ HEISK ♣️ Ranagri ♣️ The Hello Darlins  
 ♣️ Joshua Burnell Band ♣️ The Magpies  
 ♣️ NATI ♣️ Sidiki Jobarteh Trio  
 ♣️ The Hunch ♣️ Rosie Hood Band  
 ♣️ James Delarre & Saul Rose  
 ♣️ Lady Nade ♣️ Joli Blon  
 ♣️ Mazula ♣️ Winter Wilson  
 ♣️ Suntou Susso (solo)  
 ♣️ Anthony John Clarke  
 ♣️ The Lost Notes ♣️ The 309s  
 ♣️ Roswell ♣️ Patakas  
 ♣️ Al O'Kane ♣️ Dan the Hat

★ Ceilidhs  
 ★ Workshops  
 ★ Morris & dance teams  
 ★ Singarounds & sessions  
 ★ Craft fair  
 ★ Food village  
 ★ Camping & glamping  
 ★ Real ale, wine & cocktail bars

refohkus  
 Youth Festival  
 P@ndemonium!  
 Children's Festival

**Day & weekend tickets**

[shrewsburyfolkfestival.co.uk](http://shrewsburyfolkfestival.co.uk)

# festival at the edge

19-21 July 2024

Hopton Court, Cleobury Mortimer, Kidderminster DY14 0EF

The longest running international storytelling festival in England

Immerse yourself in the ancient art of storytelling.

Be prepared to have your spine tingled, your jaw dropped, your senses awakened! Suspend your disbelief and savour this delightful artform with stories for all ages.

We have an amazing line up of artists including...

- Aisla Dixon • Ana Maria Lines • Andy Harrop Smith
- Ciderhouse Rebellion with Jesse Summerhayes • Dan Walsh • David Hughes
- Dr Bramwell and Eliza Skelton • Len Cabral • Linda Moylen • Mark Borthwick
- Mossy Christian and Megan Wisdom • Rapsquillion • Sahand Sahebdivani
- Sarah Liisa Wilkinson • Shonaleigh • Suzanne and Jake Thomas
- Tim Ralphs • Time Bandits • and more to be announced (see website).

• Dedicated children's programme and circus activities  
 • Exciting storytelling & music workshops, Tai Chi / QiGong, stories around the fire and much more.

*Stories in your heart and songs in your head. Listen to them, tell them, sing them, and join in this fabulous experience.*

For more information:  
[www.festivalattheedge.org](http://www.festivalattheedge.org)  
 email: [info@festivalattheedge.org](mailto:info@festivalattheedge.org)  
 tel: 07544 044 126

**fate**  
taking storytelling to the edge





**B:Music**

# Bat for Lashes

18 June | Town Hall

[bmusic.co.uk](http://bmusic.co.uk) | 0121 780 3333

3 BRIT Awards nominations | 3 Mercury Prize nominations | 2 Ivor Novello wins  
 Music & soundtrack writing for 'The Twilight Saga' & 'The Hunger Games'

# B:Music

Town Hall & Symphony Hall



Live music from across the region...

## Charm Of Finches

The Hive, Shrewsbury, Sun 9 June

Darkly bewitching folk pop, boasting seamless blood harmonies that 'traverse melancholy and wonder in equal measure', is the stock-in-trade of Melbourne sisters Mabel and Ivy Windred-Wornes. With a propensity for writing haunting tunes about emotive subjects such as love and grief, the Aussie duo visit Shrewsbury this month in support of their fourth studio album, *Marlinchen In The Snow*.

The siblings are supported on the night by Canadian singer-songwriter Mia Kelly, whose debut record, *Garden Through The War*, was nominated for album of the year at the 2023 Folk Music Awards.



## Nathaniel Rateliff & The Night Sweats

Wulfrun Hall at The Halls Wolverhampton, Sun 30 June

Nathaniel Rateliff may have caused something of a stir with his introspective, early-career, folk-based albums, but it was following the formation of high-energy band The Night Sweats that he really began to make a splash.

Since their debut offering nine years ago, the boys have taken their winning blend of folk, Americana, R&B and soul to bold new heights, their thought-provoking songs about the pleasures and pains of life all being greatly enhanced by the welcome addition of Nathaniel's whiskey-soaked vocal.



## The Charlatans & Johnny Marr

Cannock Chase Forest, Staffordshire, Fri 28 June

This is one of three late-June Forest Live concerts in Cannock Chase Forest and brings together two hugely respected names on the UK music scene...

Midlands-formed indie stalwarts The

Charlatans are celebrating their 35th anniversary this year. They're joined in the woodland by venerable musician & singer-songwriter Johnny Marr, who's still going strong 30-plus years on from his days as guitarist & co-songwriter in The Smiths. The Charlatans and Johnny are being joined in Cannock Chase Forest this month by Anne-Marie, who's in concert there the night before, and Olly Murs (the night after).

## Skids

The Robin, Bilston, Sat 29 June

Green Day and Manic Street Preachers are among the bands whose influences include Skids, the legendary Scottish punk rockers who rose to stardom in the late 1970s and scored a still-loved hit with 1979 single *Into The Valley*.

Following an initial five years together, Skids went their separate ways for the next quarter century, re-forming in 2007 to celebrate their 30th anniversary. Another lengthy hiatus then followed, before the landmark of their 40th birthday once again brought them back together - at which point they even released a new album; their first since 1981!

## Cara Luft

Berwick House, Shrewsbury, Fri 14 June

Founding member of Canadian folk trio The Wailin' Jennys, Cara Luft's solo sound has been moulded by such diverse influences as 1980s pop music, folk music, church music and, er, Led Zeppelin!

Presenting what she once described as "rockin' folk for the discerning listener", the 50-year-old's natural warmth and delicious sense of humour ensure that an evening in her company offers much, much more than some spellbindingly good musicianship.

## Wakefire: Lady Maisery, Jimmy Aldridge & Sid Goldsmith

Newhampton Arts Centre, Wolverhampton, Sat 1 June

Lady Maisery, Jimmy Aldridge and Sid Goldsmith describe their new show as an essential incantation to the summertime and all that it holds. Following on from celebration-of-winter tour *Awake Arise*, the talented five-piece are here marking the seasons of spring and summer in song. Along the way, they're promising to serve up an experience that calls to mind 'morris, mayday, migration and magic, countryside hares and city foxes, ritual, rave and cider with Rosie, class struggles, cuckoo calls, beaches and barbecues'....

In short, it promises to be quite an evening!







# NON-STOP FUN

Two days of fab food and festival frolics in Shrewsbury's Quarry Park





**The award-winning Shrewsbury Food Festival is back late this month, promising two days of non-stop fun for family and friends. From chef demos and workshops, through to live music and entertainment for younger visitors, there's no shortage of things to sink your teeth into. What's On recently caught up with Beth Heath, the founder of Shropshire Festivals, which organises Shrewsbury Food Festival, to find out more...**

**This will be the 11th Shrewsbury Food Festival, Beth. Tell us about that lightbulb moment which planted the seed for the first event...**

Shrewsbury is a beautiful, thriving town, bursting with brilliant chefs, restaurants and foodies. I felt it was missing a big event that celebrated all those things. I had spent years as the operational director at Ludlow Food Festival and felt ready to launch my own festival, which the people of North Shropshire were crying out for.

**And how would you say the festival has evolved since then?**

The first year I hoped for 3,000 visitors but had 10,000. Now we attract over 25,000 people annually! In the last decade it's grown in reputation, size and offering. We have more interactive, hands-on activities, like our chef school, kids' cookery school, and our field-to-fork area, which allows us to give the whole picture of the food sector with hands-on experiences around sustainability and farming.

The festival has expanded its scope - we now have home & garden stalls and a bigger cultural offering with more bands and local performance groups. And lots more businesses want to partner with us - whether they want to hold a party in the middle of our festival or sponsor an area to boost their brand awareness. It's all about championing local businesses.

**How would you describe the visitor experience?**

At the heart of any Shropshire Festivals event is providing non-stop fun. Something every first-time visitor says is that it's so much bigger than they expected. This isn't a farmers' market - it's a collection of 200 independent businesses, music stages, chef demonstrations, chef schools, a whole field of free kids' activities, and surprises around every corner. There's something for everyone, whether you want to shop, relax with a beer in front of the stage, eat great food, or have a family day out. You are guaranteed a day of memory making and good times!

**What's new for 2024?**

There are lots of new exhibitors and chefs joining us this year, along with the festival favourites. We're changing up the kids' cook-along tent to a wider range of dishes and more places. We have a new layout this year, which will

enrich our visitors' experience. Families will be excited to hear our kids' area is even bigger this year, and everything is free to take part in.

There will be a special celebration of Town Crier Martin Wood's 40-year anniversary. And we'll be collaborating with Harper Adams' food department to expand our food education in the field-to-fork area. It's an exciting year for us as we launch two sister businesses. We are aiming to open the Quarry Kitchen in time for the food festival. We've been redeveloping the café at the swimming baths to give the Quarry the café it so desperately deserves and needs! We've also just taken over the Shropshire Ice Cream Company, so we are able to provide festival-goers with proper, quality ice cream that's free from additives and not pumped full of air, like in cheaper alternatives. Make sure you cool down with a scoop at the festival!

**How important is it to mix it up and keep it fresh each year?**

After 11 years, our visitors know to expect a quality offering. We'd never lose their favourite areas, like the chef demos and live music stage, but there has to be fresh ideas every year to keep it interesting. The best ideas come from chatting to all the cool and interesting people, producers and chefs who come to the festival.

**What's your favourite part of the festival?**

Amongst the chaos of running a large event like the Shrewsbury Food Festival, I always make sure I take a moment on the hill to stop and watch the sea of happy faces, eating, drinking, dancing and having fun. It makes the hard work worth it. And as people leave, we get comments like "That was amazing, thank you!" I never get tired of hearing that. It makes Team Pink feel like we're part of something bigger than our small, family-run business, and it gives us immense pride to bring it to life each year.

**...and the most stressful part of the event?**

Worrying about rain! Thankfully, for the food festival weekend, it's always sunny - but we still fear the rain coming, even though we have lots of cover.

**Is there a celebrity chef who you would love to have at the festival?**

Shrewsbury Food Festival is all about championing local, so we always want the very best chefs from the local scene. They

support our events, use local ingredients, run amazing local venues, and provide awesome demos - they're celebrities in our eyes!

**Do you have a festival highlight from the past 11 years?**

Standing with my husband and two children (aged nine and 13), who have worked all day surrounded by the biggest support network you can imagine, taking in what we have achieved. This is a true family-run business, and having our family and friends there every year in their pink t-shirts makes me feel so proud of how far we have come - and that they've made it possible!

There have been so many moments where we've managed to secure getting something unique in the Quarry, from Highland cattle to a Spitfire, along with over 203,000 people over the past 10 years. Just wow!

**If you were allocated 15 minutes to spend £25 at the festival, where would you head?**

To Shrewsbury Gin for a G&T, to Wild Street Kitchen for a venison burger, and finish off with something sweet from the Shropshire Ice Cream Company!

**Shropshire Festivals has received many accolades over the years, but how did it feel when you were recently crowned Tourism Event/Festival of the Year 2024?**

I was a mixture of shocked and proud. It was that 'penny drop' moment - the hard work of the team has been recognised and has paid off. It's also recognising that we're more than a food festival, and we do so much for our community as well.

**And where would you like to see the festival in the next 11 years?**

We will be happy if the Shrewsbury Food Festival can continue to thrive through some very difficult years in the events industry - it's so important that people keep supporting local events. And during the next 11 years we'll be celebrating some big milestones for our other flagship events: Shropshire Petal Fields, Shropshire Oktoberfest and Shropshire Business Festival. And I have a hunch there will be a few more events added to that list in the next decade as well!

.....

**Shrewsbury Food Festival takes place at the town's Quarry Park on Saturday 29 & Sunday 30 June**



# WOLVERHAMPTON WHAT'S ON AT NAC

Newhampton Arts Centre

SUMMER  
2024



## CLUB ORIGAMI

Immersive dance show inviting families to create, imagine, and explore.

SAT 1 JUNE 11AM & 2PM FROM £6.50



## LIVE AND PICKING

Showcasing the best young bands in the area

FRI 14TH JUNE 7.30PM - £5



## WAKEFIRE

Folk music with Lady Maisery, Jimmy Aldridge & Sid Goldsmith

SAT 1ST JUNE 7.30PM - £18



## COMMUNITY MUSIC FESTIVAL

This 1-day festival returns to the New Horizons stage with 8 of the most exciting bands from across the West Midlands.

SAT 13TH JULY 1.30PM - FROM £5



## STORY BAZAAR

A storytelling Evening with Len Cabral

THU 18TH JULY - £8



## CAMRA BEER FESTIVAL

CAMRA returns for 2024's summer beer and cider festival - More details coming soon.

THU 25 - SAT 27TH JULY



## PAINT THE DAY 2024

Create a masterpiece in 24 hours for Wolverhampton's Paint the Day challenge. More details coming soon.



## MEGSON

With heavenly vocals, lush harmonies, and driving guitars.

SAT 14TH SEP 8PM - FROM £16

NEWHAMPTONARTS.CO.UK 01902 572 090

NEWHAMPTON ARTS CENTRE, DUNKLEY ST  
WOLVERHAMPTON, WV1 4AN

# JAZZ AT NAC BLOCK PARTY

Saturday  
8th June  
at 2pm

In the New Horizons  
Stage tent at Newhampton  
Arts Centre



Featuring

## RBC Afro-Cuban Jazz Orchestra

LIVE DJ  
Stewart Kendrick

+ food, drink & festival vibes

FREE Admission

£5 ticket to be purchased (redeemable at the bar)

BOOK NOW:

NAC

In association with  
Jazz at Wolverhampton

ARTS COUNCIL  
ENGLAND

NEWHAMPTON ARTS CENTRE, DUNKLEY STREET, WOLVERHAMPTON, WV1 4AN  
WEB: WWW.NEWHAMPTONARTS.CO.UK PHONE: 01902 572 090

NAC  
Newhampton Arts Centre

In association with  
Jazz at Wolverhampton

ARTS COUNCIL  
ENGLAND

# IVO NEAME'S DODEKA

FEAT. WOLVERHAMPTON, DUDLEY AND SANDWELL MUSIC SERVICES

SAT 29TH JUNE  
7.30PM £17.50

WOLVERHAMPTON ARTS CENTRE  
JAZZ AT NAC



Celebrated Phronesis pianist-composer Ivo Neame and his ingenious 12-piece band arrive at NAC for a rare gig, joined by promising teenage instrumentalists from across the Black Country for the first part of the show.

BOOK NOW: Tel: 01902 572090 Web: newhamptonarts.co.uk  
Newhampton Arts Centre, Dunkley Street, Wolverhampton, WV1 4AN



## Festivals coming to the region in June...

### Nocturne Live

Blenheim Palace, Oxfordshire,  
Thurs 13 - Sun 16 June

Nocturne Live is a series of concerts which sees a fantastic line-up of artists performing against the spectacular backdrop of Blenheim Palace's Great Court.

Why not make the most of your visit and spend the day at the stunning venue before the concert begins? With an Annual Pass, you can enjoy everything that the palace, park & gardens has on offer, before enjoying an incredible evening of music.

**2024 line-up includes:** Crowded House, Turin Brakes, Sheryl Crow, Chaka Khan, Sister Sledge, Soft Cell (pictured), Heather Small, Sugababes and Melanie C.



### Download Festival

Donington Park, Derby, Fri 14 - Sun 16 June

With top billing consistently taken by some of the biggest names in rock and metal, it's not hard to see why Download is one of the most popular and well-attended festivals in the country.

Conceived as a follow-up to the Monsters Of Rock Festival, Download partly owes its name

to the pioneering way in which it uses technology to connect with audiences and build a community.

**2024 line-up includes:** Queens Of The Stone Age, Fall Out Boy (pictured), Avenged Sevenfold, Royal Blood, The Offspring, Limp Bizkit, Machine Head, The Used, Electric Callboy, Pantera, Black Stone Cherry, Sum 41, Enter Shikari, Corey Taylor and Billy Talent

### Upton Jazz

various venues in Upton-upon-Severn,  
Worcestershire, Fri 28 - Sun 30 June

Registered charity Upton Jazz Association has a couple of aims. One is to provide and encourage jazz music by inviting high-quality, award-winning and international talent to Upton. Its second aim is to encourage local and talented young people to explore the music and develop their skills and confidence in performance.

All profits from the sale of tickets are used to support the aims of the charity.

**2024 line-up includes:** Panama Quartet, Debbie Arthur's Quartet, Malvern Jazz Jam, Alan Barnes with John Hallam, Tom Kincaid, Nick Milward and Tom Hil, Hanley School Jazz Band, Amy Roberts Quintet (pictured) and Hotsy Totsy.



### Forest Live

Cannock Chase Forest, Thurs 27 - Sat 29 June

Forest Live is a major live-music series held annually in forests around the UK. Forestry England use the money the concerts raise to run important conservation projects, keep growing trees, and maintain beautiful natural areas for everyone to enjoy.

Last year they planted some 7.4 million trees, cared for the nation's 1,500 woods and forests sustainably and welcomed a staggering 291 million visitors.

**2024 line-up:** Olly Murs, Anne-Marie (pictured), The Charlatans and Johnny Marr.

### Beardy Folk Festival

Hopton Court, Cleobury Mortimer, Shropshire,  
Thurs 13 - Sun 16 June

Beardy Folk Festival is a beautifully crafted midsummer weekend boasting a programme of folk, roots and acoustic music.

There are plenty of workshops to sample too, including group singing, French dancing, ceilidh, yoga, morris dancing, spoken word, comedy, storytelling, woodland craft making and circus skills.

**2024 line-up includes:** Kate Rusby, Mad Dog Mcrea, The Magic Numbers, Blackbeard's Tea Party, 3 Daft Monkeys, The Deep Blue (pictured), Michele Stodart, An Audience With Bob Harris, Martin Stephenson & The Daintees and Blair Dunlop.





11 DAYS OF MUSIC,  
PERFORMANCE  
AND LITERATURE

Folk bands in the historic cathedral, book readings from top authors, outdoor plays, classical concerts popping up in churches, free fireworks and more.

For 11 days in July, Lichfield Festival brings music, performance, comedy and dance to venues across the city. Experience performances from world-class, award-winning artists and discover new talent in our diverse programme.

01543 306271  
[lichfieldfestival.org](http://lichfieldfestival.org)

Scan for more





## Comedy previews from across the region...

## Sally-Anne Hayward

Stourbridge Town Hall, Sat 15 June

If you're a Sarah Millican, Russell Howard, Russell Kane, Hal Cruttenden or Suzi Ruffell fan and have attended some of their shows, there's every chance that, prior to the main event, you will have had your laughter muscles nicely lubricated for you by Sally-Anne Hayward.

A real comedian's comedian, Sally-Anne's ever-so-nice persona conceals a caustic wit, cutting cynicism and generally bitchier side that serves her well as she takes a tongue-in-cheek look at the world around her. Her latest stand-up offering is *Egg Shortage*, a show in which she recounts 'hilarious tales of dating apps, fragile neighbours, and trying to hold in farts on a yoga retreat'.



## Viggo Venn

Theatre Severn, Shrewsbury, Wed 26 June

Viggo Venn hit the big time last summer when he became the 2023 winner of ITV's *Britain's Got Talent*, since which time he's been basking in the glory of finally achieving his long-desired transformation from Norwegian clown to British comedian. The BGT judges were certainly effusive in their praise for the talented 35-year-old, with Bruno Toniolo hailing him one of the most memorable characters since Mr Bean and Simon Cowell declaring his act to be like nothing he'd ever seen before. Viggo visits Shrewsbury this month as part of his first-ever national tour.



## Troy Hawke

Birmingham Town Hall, Sat 29 June

Erudite and home-schooled 1930s throwback Troy Hawke lists his hobbies as playing scrabble, conspiracy theories and calling Manchester City's Erling Haaland "a tremendous Nordic meat shield". The foppish Errol Flynn-lookalike (Troy, that is, not Erling) - as played by character stand-up Milo McCabe - had been out and about on the comedy circuit for a good few years before finally hitting the online jackpot and going viral on TikTok. Troy is visiting the Midlands this month with *The Greeters Guild*, a show in which he 'examines his unlikely genesis and explores exactly why a well-dressed man simply being nice to people has caused such a kerfuffle'. Expect an evening of splendidly incongruous, occasionally brain-addling, delivered-with-warmth comedy.



## Ruby Wax

Warwick Arts Centre, Coventry, Sat 29 June

American comedian Ruby Wax here presents what has been described as her rawest, darkest and funniest offering yet. "The original idea behind this show [titled *I'm Not As Well As I Thought I Was*] was based on the extreme journeys that I wanted to take in order to find an antidote to living a frazzled life," says Ruby. "Along the way, I wanted to find meaning, peace, happiness - the stuff we're all chasing. However, after some transcendent experiences, I ended up in a mental institution... Obviously, I didn't find what I was looking for..."



Rhod's best-loved gags include: "In the Bible, God made it rain for 40 days and 40 nights. That's a pretty good summer for Wales... That's a hosepipe ban waiting to happen." And "A spa hotel? It's like a normal hotel, only in reception there's a picture of a pebble."

## Catherine Bohart

The Glee Club, Birmingham, Sun 9 June;  
Belgrade Theatre, Coventry, Wed 26 June

'The OCD, bisexual offspring of a Catholic deacon', Catherine Bohart's natural enthusiasm ensures excellent rapport with her audience, for whom the Irish comedian seems to have a genuine affection.

Her jokes include: "Lesbian sex is like cricket: it goes on forever and there's a lot of men watching it at home, alone, on the internet."



## Rhod Gilbert

Regent Theatre, Stoke-on-Trent, Fri 7 June

Welsh funnyman Rhod Gilbert has acquired a huge and still-growing following thanks to a high-energy brand of grumpiness that marks him out as one of the top comedians of his generation.

He's returning to the Midlands this month with *Rhod Gilbert And The Giant Grapefruit*, a show in which he discusses his recent battle against stage four head and neck cancer.



# THE ROOM WHERE IT HAPPENS...

**Birmingham Hippodrome is this month welcoming blockbuster musical Hamilton for the summer season...**





When multi-award-winning musical Hamilton opened in the West End, it was the hottest ticket in town. Created by Lin-Manuel Miranda, the show - which tells the story of American founding father Alexander Hamilton through a mix of musical styles including hip-hop, rap, blues and jazz - had been a smash hit on Broadway and was the musical everyone was talking about.

Now Hamilton is on tour across the UK, coming to Birmingham Hippodrome this summer - and the buzz continues. For its two lead actors, Shaq Taylor as Hamilton and Sam Oladeinde as his friend and then nemesis, Aaron Burr, that fever pitch is both exciting and a little daunting.

"It's equally as thrilling as it is terrifying," says Sam, who understudied a host of lead parts in the West End production before taking on the role of Burr for the tour. "I think there is a huge amount of pressure and anticipation that comes with being part of this thing which everyone has heard of called Hamilton. But also I think, because the piece simply is incredible, very quickly that terror dies down, and it's just pure excitement and joy because the show carries everybody through; it really does. It's incredibly special."

Both men knew of the musical from its early days in the US and were keen to be part of its story.

"I've been a fan of Hamilton from when it first came out," says Shaq, "and from then on, I've been completely immersed in the whole world that is Hamilton. Now, to be able to be a part of that world is very scary because there's a lot to live up to. A lot of great artists have paved the way before me, and now to put my own stamp on this machine is amazing. So it's both very daunting and joyful at the same time."

London-born Shaq has a host of theatre credits to his name, including the Beast in Disney's Beauty And The Beast and Javert in Les Misérables. One of the benefits of touring is that it offers actors the chance to really dig into a role.

"That is the luxury of doing it so many different times," Shaq explains. "You get the chance to make so many choices and explore different nuances and play different elements of the character."

"They are very complex characters. I like how instinctive Hamilton is, how everything he does and says comes from his heart and he means it. It's always from a place of 'I feel this way, I'm going to say it this way and

everyone else is going to hear me.' From the way he has grown up as a young man, I feel like that has conditioned him to have this bravado, this 'me against the world' stance, and I feel he never loses that throughout this piece."

But, Shaq adds, Hamilton also has his flaws: "He is someone who definitely flies too close to the sun. There are moments in the piece where I catch myself, as Shaq, saying 'Just think about that situation a bit more and choose a different route because it would be better for yourself and those around you.' But unfortunately that's not how the story goes."

For Sam, who has recently appeared as vocalist Zalon Thompson in the Amy Winehouse film Back To Black, the chance to play Aaron Burr on tour was an opportunity not to be missed.

"I understudied several different roles in the West End, but I never went on for Burr, so it felt like the journey wasn't quite complete. So I feel like we are ending the journey, doing all of the tracks that I've learned and doing it in such a celebratory way, taking it to the audiences and breathing perhaps a different life into the show."

"The joy of doing the show eight times a week is that you fill out Aaron and he becomes an entire human being. And just like I am different Monday to Saturday, so Aaron Burr is different Monday to Saturday. It's really interesting when people come to the show more than once and say 'I saw a couple of different things today, and that was really exciting.' I think I've been able to delve deeper into the role, and I hope that means that audiences have been able to take even more from the story."

So why do the guys think Hamilton has been such a runaway success?

"I think the show is a building with many, many doors," explains Sam, "and absolutely everyone on this planet can find a door they like [through which] to enter the piece. People love the show for so many different things. You might love the hip-hop beat, you might love the lyricism, you might fall in love with the love story, you might fall in love with the politics."

"The show has every element of every type of story in it, but it's done so well that you fall in love with the show for one reason, and then you get to witness the joy of everything else. Every single element of the show is a strength - the choreography, the direction, the music, the band, the performances on stage, the sound, the lighting - the show has

won record numbers of awards in the UK, in America, around the world, and that's for a reason."

Shaq believes its story, in which a nascent nation takes on the weight of the British Empire and wins, resonates in its David & Goliath struggle.

"There's a strong togetherness that everyone can relate to in some sort of way, whether it's in their local community or fighting for something that they believe in. It may not be as big as this, but there's an undeniable force of togetherness when people fight for something they believe in."

Before taking on the role, Shaq learned a good deal more about the historical figure of Hamilton and his era.

"It's good to know the basics so that you can immerse yourself in the world of Alexander Hamilton. Ron Chernow's Alexander Hamilton, the book that the musical is based off, is so detailed. It goes through the emotions of Hamilton from a young age. It holds so much information that never made it into the musical, but it's good to know those parts of his life to connect the dots and create nuances within our piece."

Sam, too, spent time learning more about the real-life characters, reading biographies of both Hamilton and Burr - and making some research visits.

"I used to work as a lawyer in New York, so the last time I was there, I went and visited some of the venues that we find ourselves in in the show. Then just doing a bit of a deep dive into the history of the show itself was fascinating, as well as trying to understand all of the musical references."

"Hamilton and Burr are written so well and are polar opposites. I think that Burr feels a sense of jealousy quickly and doesn't necessarily understand that his success doesn't negate others' success, and the other way round. But I also think he is a very intelligent and kind and considerate person, so I try and play Aaron in a way that makes the audience feel that they *are* Aaron in those situations. I think it's much easier to think of yourself as Aaron, who is an ordinary person, who is smart but a little bit flawed, as opposed to this unique, headstrong, bright Hamilton. He is the exception to the rule - which is why the musical is Hamilton!"

.....  
**Hamilton shows at Birmingham Hippodrome from Tuesday 25 June to Saturday 31 August**





## The Wizard Of Oz

Birmingham Hippodrome, Tues 11 - Sun 16 June; Wolverhampton Grand Theatre, Tues 30 July - Sun 4 August

Craig Revel Horwood (Hippodrome) and The Vivienne (Grand Theatre) star as the Wicked Witch of the West alongside Aston Merrygold as the Tin Man in this classic story from the imagination of L Frank Baum.

A marvellous mix of magic, mayhem and munchkins, the terrific tale tells the story of Kansas resident Dorothy Gale and her unexpected trip over the rainbow to the colourful land of Oz.

Once there - and accompanied by a literally brainless scarecrow, a tin

man who's missing a heart and a cowardly lion in urgent need of some courage - she determines to travel along the Yellow Brick Road, visit the Emerald City, and ask the Wonderful Wizard of Oz to help her find her way back home to Kansas...

Only trouble is, the aforementioned Wicked Witch of the West has other, far more sinister plans for her...

Featuring the iconic original score from the Oscar-winning MGM film - including Follow The Yellow Brick Road, We're Off To See The Wizard, and of course Over The Rainbow - this hit show visits the Midlands direct from the London Palladium and includes additional songs by Andrew Lloyd Webber and Tim Rice.

## Frankie Goes To Bollywood

Wolverhampton Grand Theatre, Tues 11 - Sat 15 June; Belgrade Theatre, Coventry, Tues 2 - Sat 6 July

Frankie never wanted to be a star; she just wanted a family. But after a chance encounter with an up-and-coming director, she finds herself transported to Bollywood...

Described as a breathtakingly colourful journey of romance, sweeping songs and vibrant dance, Frankie Goes To

Bollywood has been inspired by real stories of British women who've been 'caught in the spotlight of the biggest film industry in the world'. The show is a Rifco Theatre Company, Watford Palace Theatre and HOME Manchester co-production.



## The 39 Steps

The Alexandra, Birmingham, Tues 4 - Sat 8 June

Anybody who remembers the various film versions of classic John Buchan spy thriller The 39 Steps would be hard-pressed to call any of them 'humorous'. So it's a bit weird, to say the least, to imagine an adaptation of the story that majors in belly laughs. Nonetheless, that's exactly what's being served up here, in a much-loved show that's been doing the rounds for many a year.

So why not catch up with handsome hero Richard Hannay as he battles to remain impressively stiff-upper-lipped in the face of dastardly murders and life-threatening encounters with double-crossing secret agents.

Four fearless actors take on 139 roles in a 100-minute show that offers plenty of fun.







Sun 2 Jun



Tones

Thu 6 -  
Fri 7 Jun



Tue 11 -  
Sun 16 Jun



Windrush -  
The Journey

Thu 13 -  
Sat 15 Jun



British Black Ballet -  
Island Movements

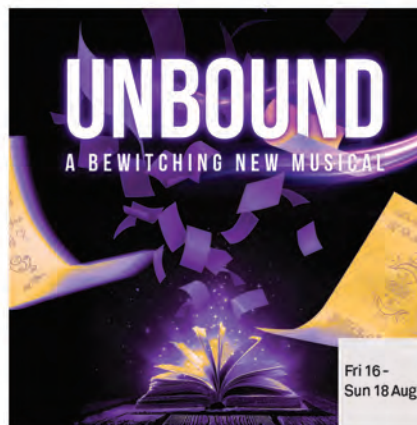
Sat 22 Jun



Tue 25 Jun -  
Sat 31 Aug



Thu 11 -  
Sat 13 Jul



UNBOUND  
A BEWITCHING NEW MUSICAL

Fri 16 -  
Sun 18 Aug

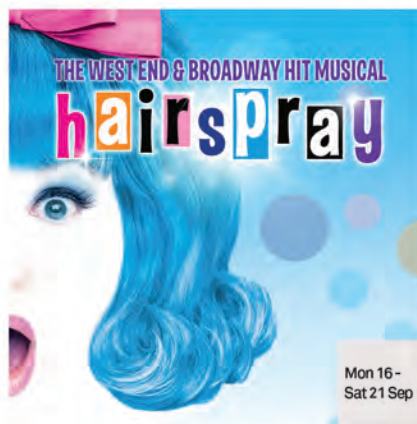


WINNER! BEST NEW MUSICAL  
WHATSONSTAGE AWARDS 2023

Tue 3 -  
Sat 7 Sep



Tue 10 -  
Sat 14 Sep



THE WEST END & BROADWAY HIT MUSICAL  
hairspray

Mon 16 -  
Sat 21 Sep



Sat 21 Sep





## The Mousetrap

Theatre Severn, Shrewsbury, Mon 3 - Sat 8 June; Wolverhampton Grand Theatre, Tues 25 - Sat 29 June

Not only has everybody heard of Agatha Christie's *The Mousetrap*, everybody's seen the show as well - haven't they?... Okay, maybe not, but as the production recently celebrated its 70th anniversary, it's fair to say its capacity to put bums on seats is absolutely beyond question. Not surprisingly the world's longest-running show, its touring version is now making a welcome return to the Midlands. *EastEnders'* Todd Carty top-bills in Shrewsbury, and is then joined in Wolverhampton by *Only Fools And Horses* favourite Gwyneth Strong.

## Windrush: The Journey

Patrick Studio, Birmingham Hippodrome, Thurs 13 - Sat 15 June

With a well-deserved reputation for championing diverse talent in opera, Pegasus turn their attention to the journey of *Windrush*, showcasing a tapestry of music and storytelling while at the same time celebrating three Black classical composers: Chevalier de Saint Georges, Richard Thompson and Des Oliver... A free exhibition, featuring photographs, music and local *Windrush* testimony, will be on display at the Hippodrome during the week of the show.

## Rush

The Rep, Birmingham, Tues 25 - Sat 29 June

Pegasus Opera Company's production at the Patrick Studio (see above) isn't the only opportunity for Midlands theatregoers to immerse themselves in the story of the *Windrush* generation this month... Subtitled *A Joyous Jamaican Journey*, *Rush* is written and narrated by John Simmit and features ska, rock steady, calypso, gospel, lovers rock, dancehall and Reggae music, all played live by the JA Reggae Band.

## Shakespeare In Love

Brewhouse Arts Centre, Burton upon Trent, Tues 25 - Sat 29 June

The Burton-based Little Theatre Company here present a stage version of the Marc Norman & Tom Stoppard-scribed Oscar-winning film of the same name. The story finds the usually brilliant bard of Stratford struggling with writer's block. Meanwhile, Viola De Lesseps - desperate to be an actor even though women are

forbidden to be on stage - disguises herself as a boy and auditions for Will's new play. When the two meet by chance, the encounter becomes the inspiration for one of the greatest love stories ever told...

## Austen's Women: Lady Susan

Theatre Severn, Shrewsbury, Wed 19 June

Tudor queen. Shell-shocked soldier. Hollywood icon... Dyad Productions' Rebecca Vaughan portrays a dazzlingly diverse array of characters in her critically acclaimed solo shows. With previous theatrical offerings having included *Elizabeth*, *Female Gothic* and *A Room Of One's Own*, Rebecca now returns with a brand-new show about *Lady Susan Vernon*, the coquettish, black-widow protagonist of an early novella by Jane Austen, believed to have been written in 1794 but not published until 1871.



## The Massive Tragedy Of Madame Bovary

Lichfield Garrick, Mon 17 & Tues 18 June

Vermin, visual absurdity, wild animals and a nun are brought together in Ha Hum Ah and Minack Theatre's version of Gustave Flaubert's *Madame Bovary*. Described by its publicity as irreverent, irrepressible and irresistible, the production sees four actors battling 'hilarious mishaps and misbehaving props to tell the (massively) tragic story' of a woman who's desperately in need of a little fun in her life.

## Oddsocks: Julius Caesar

Tamworth Castle, Sun 9 June; Belgrade Theatre, Coventry, Mon 17 - Wed 19 June; Avoncroft Museum, Bromsgrove, Wed 26 June; Bowring Park, Telford, Sun 7 July; Compton Verney, Warwickshire, Thurs 12 July; Victoria Gardens, Tewkesbury, Sun 14 July; Brueton Park, Solihull, Tues 13 August

When Roman emperor Caesar is assassinated by a group of prominent senators, one of his staunchest supporters, Mark Antony, manages not only to turn the crowd against the conspirators but also to defeat them in battle... But let's avoid getting too bogged down in the whys and wherefores of Shakespeare's extremely serious tale of conspiracy and bloody murder - given that it's here being presented by zany funsters Oddsocks! The ever-entertaining band of theatricals are promising their audiences thrills and spills aplenty, including the tearing of togas, the swishing of swords, some splendidly preposterous puppetry and the biggest battle scene ever created by five actors. In short, it's time to brace yourself for the kind of laughs you have no right to expect in a production of *Julius Caesar*...





# What will you see next?

DIRECT FROM LONDON'S WEST END

SWEET  
**CAROLINE**  
NEIL DIAMOND  
THE ULTIMATE TRIBUTE



WED 24 JUL '24  
SWEET CAROLINE

WOLVERHAMPTON GRAND THEATRE PRESENTS



TUE 16 - SAT 20 JUL '24  
I LOVE YOU, YOU'RE PERFECT,  
NOW CHANGE



**101**  
**DALMATIANS**  
THE MUSICAL

TUE 20 - SAT 24 AUG '24  
101 DALMATIANS THE MUSICAL

LOVE & TINA IN ASSOCIATION WITH PAUL ROBERTS PRODUCTIONS PRESENTS  
**WHAT'S LOVE GOT  
TO DO WITH IT?**  
THE ULTIMATE TRIBUTE TO TINA TURNER



THU 29 AUG '24  
WHAT'S LOVE GOT  
TO DO WITH IT?





**oddsocks**

'TOGA-LLY' HILARIOUS, FUN FOR ALL OF THE FAMILY!

# JULIUS CAESAR



**TAMWORTH CASTLE GROUNDS**

Staffordshire

9 June

[tamworthartsandevents.co.uk](http://tamworthartsandevents.co.uk)

01827 709618

**BELGRADE THEATRE**

Coventry

17-19 June

[belgrade.co.uk](http://belgrade.co.uk)

024 7655 3055

**AVONCROFT MUSEUM**

Bromsgrove

26 June

[oddsocks.co.uk](http://oddsocks.co.uk)

0333 666 3366

**BOWRING PARK**

Telford

7 July

[telfordtheatre.com](http://telfordtheatre.com)

01952 382382

**COMPTON VERNEY**

Warwickshire

12 July

[oddsocks.co.uk](http://oddsocks.co.uk)

0333 666 3366

**VICTORIA GARDENS**

Tewkesbury

14 July

[rosetheatre.org](http://rosetheatre.org)

01684 295074

**BRUETON PARK**

Solihull

13 August

[thecoretheatresolihull.co.uk](http://thecoretheatresolihull.co.uk)

0121 704 6962

## NEW VIC

A thrilling ghost story from one of Britain's most loved authors

CHARLES DICKENS'

# THE HAUNTING

BY HUGH JANES

**SHOWING UNTIL SAT 15 JUNE**

**Box Office 01782 717962**

**[newvictheatre.org.uk](http://newvictheatre.org.uk)**



Image by musecreativecomms.co.uk



## Theatre previews from around the region



### The Syndicate

Theatre Severn, Shrewsbury, Tues 18 - Sat 22 June; The Alexandra, Birmingham, Tues 25 - Sat 29 June

With their jobs and livelihoods under threat, five supermarket workers have a stroke of luck when their lottery syndicate numbers come in. But will a share of the jackpot make their dreams come true - or their nightmares a reality?... This stage adaptation of the popular Kay Mellor-written television series is being directed by the late playwright's daughter, the actress Gaynor Faye.

"Mum's shoes are big ones to fill," says Gaynor, "but I understand what her vision was for this production because I had been by her side from the very beginning. I'm excited for everyone to see it."

The show stars two familiar faces from the world of television soap operas: Brooke Vincent (Sophie Webster in Coronation Street) and Samantha Giles (Emmerdale's Bernice Blackstock).

### Twelfth Night: A Cornish Tale

Stafford Gatehouse Theatre, Fri 21 June - Sun 7 July

Comedian Seann Walsh takes on the coveted role of Malvolio in this Stafford Festival Shakespeare production, the second to be performed in the Gatehouse theatre rather than outdoors in the grounds of the town's castle.

As with many Shakespeare comedies, Twelfth Night is based on a case of mistaken identity, with Viola disguising herself as a boy and causing all manner of awkward romantic shenanigans. However, the play's continuing popularity can mainly be attributed to its hilarious (well, by Shakespeare's standards anyway) comic sub-plot, in which the merciless Sir Toby Belch and his foolish companion, Sir Andrew Aguecheek, seek to humiliate the pompous Malvolio (and achieve their aim in fine style)...

As the show's subtitle makes clear, this particular version of Twelfth Night comes complete with a Cornish theme. Natalie Anderson and the Bafta-winning Molly Windsor also star.

### Yes, We're Related

Old Joint Stock Theatre, Birmingham, Thurs 6 & Fri 7 June

According to its publicity, audience members should get ready to laugh, cry and 'eat trifle' when they take their seat for Florence Lacey-Evans' 'nutty new comedy'.

Showing in Birmingham prior to a run at the Edinburgh Fringe, the play finds Sara, who's in denial about the death of her mother, being visited by her estranged older sister, Saskia. Events then take a turn for the worse as a result of a secret being revealed, one which sees the sisters' relationship going from bad to absolutely catastrophic...



### Kyoto

Swan Theatre, Stratford-upon-Avon, Tues 18 June - Sat 13 July

Written by Joe Murphy and Joe Robertson, Kyoto is being produced by the Royal Shakespeare Company in collaboration with Good Chance - of which the aforementioned Joes are founders and co-artistic directors. The organisation started life in the Calais 'Jungle' refugee camp in the mid-2010s, where thousands of people were waiting for their 'good chance' to reach the UK. When the Joes visited the camp, they decided to build a dome theatre there, so that people of all nationalities could come together to share stories, music and art. Having since enjoyed a major critical success



with a play about the refugee experience (The Jungle), Murphy and Robertson have now turned their attention to another highly topical subject: climate change...

Described as a fast-paced political thriller, their new play takes audiences into the heart of the historic 1997 climate summit, which took place in the Japanese city of Kyoto (hence the title).

With time running out, the world's nations scramble to agree the first-ever legally binding emissions targets. They're desperate to get the deal signed, sealed and delivered - but American oil lobbyist and master strategist Don Pearlman has other ideas...

### Party Games!

Malvern Theatres, Tues 25 - Sat 29 June

With a general election on the not-too-distant horizon, what better time to check out a play about the chaos of government and the state of politics in the UK?

It's the year 2026, and John Waggner, the newly elected leader of the centrist and hastily formed One Nation Party, presides over a hung parliament, a discontented electorate and a workforce of striking cheese makers.

He and his power-hungry MPs must cling onto authority through whatever shaky means possible. Can one man, a Svengali spin doctor and some dodgy data unite the country? And what role can his wife, the King and a large spider play in keeping the lights on? This acerbic new comedy stars Matthew Cottle, Debra Stephenson and Ryan Early.



RSC

STRATFORD-UPON-AVON  
18 JUNE - 13 JULY 2024



A CO-PRODUCTION WITH GOOD CHANCE

# KYOTO

BY JOE MURPHY AND JOE ROBERTSON  
DIRECTED BY STEPHEN DALDREY AND JUSTIN MARTIN  
A GOOD CHANCE COMMISSION

BOOK NOW  
[rsc.org.uk](https://rsc.org.uk)

TikTok

£10  
TICKETS  
FOR  
14-25s



Supported using public funding by  
ARTS COUNCIL  
ENGLAND

THE OLD JOINT STOCK PRESENTS



**FIRST DATE**  
A COMEDY MUSICAL

BOOK BY AUSTIN WINSBERG  
MUSIC AND LYRICS BY ALAN ZACHARY  
AND MICHAEL WEINER  
DIRECTED BY JAMES EDGE

**7TH - 25TH AUGUST 2024**  
OLD JOINT STOCK THEATRE, BIRMINGHAM | [OLDJOINTSTOCK.CO.UK](https://oldjointstock.co.uk)  
BOX OFFICE ENQUIRIES: 0121 200 1892

FIRST DATE is presented by arrangement with Concord Theatricals LTD. [www.concordtheatricals.co.uk](https://www.concordtheatricals.co.uk)

**NEW VIC**  
education

**NEW VIC**

**SUMMER HOLIDAY  
PROJECTS 2024**

Join us this summer for our fantastic holiday projects, from crafts and drama for younger children to A Play in a Week for older children.

*The Real Secret Garden*

Tue 6 - Wed 7 August  
Ages 5-9 £50



*Keeping the Garden's Secrets*

Mon 29 July - Fri 2 August  
Ages 10-15 £120



To find out more information email [lparry@newvictheatre.org.uk](mailto:lparry@newvictheatre.org.uk)  
To book, visit [www.newvictheatre.org.uk](https://www.newvictheatre.org.uk) or call the  
Box Office on 01782 717962



## Theatre for younger audiences



## In The Night Garden Live!

Belgrade Theatre, Coventry, Fri 21 & Sat 22 June; Theatre Severn, Shrewsbury, Wed 4 & Fri 5 September

If your little ones are big fans of the much-loved CBeebies television series, they're certain to adore this live version as well. And it's not only the kids who're in love with the stage shows; according to audience surveys and parents' reviews, nine out of 10 adults consider In The Night Garden Live to be a five-star theatrical experience.

The show lasts for 55 interval-free minutes, sees Igglepiggle looking for his friends in the Night Garden (by following their funny sounds), and features a very special visit from 'the amazing flying Pinky Ponk'.

## Zog And The Flying Doctors

Crewe Lyceum Theatre, Fri 14 - Sat 16 June; William Aston Hall, Wrexham, Sat 22 - Sun 23 June

Freckle Productions' hugely popular stage version of the much-loved Julia Donaldson & Axel Scheffler story finds accident-prone dragon Zog providing an air-ambulance service with the assistance of his 'flying doctor' crew - namely, Princess Pearl and Sir Gadabout. But Pearl's uncle, the king, doesn't believe that princesses should be doctors, so before too long she finds herself locked up in the castle and once again forced to wear a crown and a 'silly frilly dress'. Needless to say, help is soon at hand...



## Dragons & Mythical Beasts Live

Warwick Arts Centre, Coventry, Sat 1 & Sun 2 June

If you caught and enjoyed Dinosaur World Live when it toured to the region, then Dragons & Mythical Beasts Live should also float your boat, as it's produced by the very same creative team. An interactive show for all the family to enjoy, the production boasts a cast of 'magnificent monsters and terrifying beasts'. These include the colossal Stone Troll, the mysterious Indrik and Japanese Baku, the Tooth Fairy (who's 'not as sweet as

you'd think'), an adorable unicorn and a majestic griffin. Oh, and there's a dragon, too - but the producers strongly advise that you avoid at all costs waking it up...



## Charlie Cooke's Favourite Book

Swan Theatre, Worcester, Tues 11 & Wed 12 June; Palace Theatre, Redditch, Tues 16 & Wed 17 July; Theatre Severn, Shrewsbury, Fri 27 - Sun 29 September

Given the success of so many other stage adaptations of Julia Donaldson & Axel Scheffler's hugely popular stories (see, for example, Zog And The Flying Doctors elsewhere on this page), it's a real no-brainer to mount a live version of Charlie Cook's Favourite Book.

Presented via the ever-popular combination of clever puppetry and enchanting songs, the show follows Charlie's attempts to get his sister to read.

Charlie himself loves reading. For him, there's nothing better than settling down to enjoy a favourite book about a pirate... who also has a favourite book... about Goldilocks... who also has a favourite book...



about a knight... who also has a favourite book... You get the idea?...

Created for children aged between three and eight, the show has a running time of one hour.

## PSYCHEdelight: Mohand & Peter

Midlands Arts Centre, Birmingham, Sat 15 & Sun 16 June

Mohand Hasb Alrosol Abdalrahman and Peter Pearson visit Birmingham with this critically acclaimed play, a family-friendly work of physical theatre which celebrates the country and culture of Sudan, the home of refugee Mohand.

"Every day for the past five years, I witnessed how much my cast miss their homes," says Sophie Bertrand Besse, whose participatory theatre company, PSYCHEdelight, is producing the show. "I saw pictures of beautiful lakes, mountains and ancient buildings; videos of family gatherings, birthdays and silly cats. I Facetimed brothers, sisters, but also nieces and nephews - those kids that we spoil at weekends but that the people I work with have never held in their arms because they are not allowed to go back. Not for a wedding, not for a funeral, never. Their country is not just a war zone or a Taliban nest, it's their homes. With Mohand and Peter, we aim to celebrate them."





# EASY PEASY

**Staffordshire's New Vic Theatre is this month presenting  
a brand-new circus-fairytale adaptation of  
Hans Christian Andersen's The Princess And The Pea...**





**Staffordshire's New Vic Theatre has joined forces with Upswing contemporary circus company and London's Unicorn Theatre to present an innovative stage version of Hans Christian Andersen's The Princess And The Pea. The play promises to be a circus spectacle that provides fun for all ages - and features a huge pile of mattresses! What's On spoke to New Vic Artistic Director Theresa Heskins, who has adapted and co-directed the show, to find out more...**

**Rehearsals are up and running for The Princess And The Pea at London's Unicorn Theatre, before it transfers to the New Vic on Wednesday 19 June. What's behind the decision to create this show, Theresa?**

It was the artistic director here at the Unicorn, actually, who asked me and Upswing's Vicki Dela Amedume to think about a version of The Princess And The Pea, Hans Christian Andersen's short story. Vicki's a circus director and I love comedy, so immediately we thought we wanted to do something that's a piece of circus slapstick; really funny, really full of circus and energy, really engaging, and aimed at a very wide audience, from very little ones right up to adults who like a laugh - and who doesn't?

**What's your history in terms of working with Upswing and the Unicorn?**

It's our first time working with the Unicorn. They're the country's leading theatre for children and young people, and the New Vic's programme of work for children and young people is really significant and important to us - and to hundreds of thousands of young people in the area - so it's wonderful working with them.

Upswing we've been working with for about 12 years, bringing circus to the New Vic and to New Vic audiences, most recently with Astley's Astounding Adventures, which was incredibly popular and breathtaking and wonderful. The New Vic's actually engaged in a partnership with Upswing to bring circus to the Potteries, and that means creating shows, circus performance, community events, education and training.

**Astley's Astounding Adventures was a big hit - is there pressure to follow on from last year's triumph?**

There always is when you do something that's been successful. Our last Hans Christian Andersen was a version of The Snow Queen, at Christmas a few years ago. That was really popular, and it won the UK Theatre Award for Best Show for Children & Young People. We've got pressure on all sides, for our track record with Hans Christian Andersen and with Astley's Astounding Adventures, and all sorts of other things.

When you're making work for young people, I think that's a huge responsibility too. You want the whole family to come and have a wonderful time, and you're making an impact that a child's probably going to remember for

the rest of their lives. We do remember those early theatre experiences more than any others.

**Why do you think circus has been such a big hit in Stoke?**

We are quite unique, I think. Because the inventor of the modern circus, Phillip Astley, came from Newcastle-under-Lyme, it's in our bones. He's our Shakespeare, really. Circus has a special importance in our area.

You can go to the circus in any country and understand it. It's a kind of international artform that goes beyond language and crosses all age ranges.

The Princess And The Pea actually has no words in it, so it's as accessible as possible to as wide an audience as possible, in that true circus form.

**What makes Hans Christian Andersen's stories work so well when adapted for the stage?**

There's something very strong about his concepts - the mattress tower is a really strong image. Thinking about The Snow Queen, the sense of all that ice and snow and frost is very evocative. The Little Mermaid is one of his, and that sense of the world under the sea makes such a brilliant theatrical environment. I suppose they've all also got quite a lot of action, and really enticing stories that are quite poignant and quite funny at the same time.

**How do you make sure that your shows have a broad appeal?**

We sort of always make them with the family in mind, because usually the way young people are coming to the theatre is within quite a wide family group - often a group with three or four generations coming along together. Everybody primarily wants the children to enjoy it; they want to make sure that they're having a lovely time, but we want them *all* to enjoy it.

I think fundamentally it comes down to making sure that the theatre-making is very sophisticated. There's nothing simple about the approach we take. The soundtrack is incredibly complicated - there's this raft of really detailed sound effects that need a lot of skill to deliver. The circus performers are doing very complicated skills that they're learning from the ground up in some instances. Everything about it - the design and lighting and everything - is very

sophisticated, but the storytelling is fast and energetic and full of action. I think that's what keeps young people engaged. Slapstick humour of the Laurel & Hardy type has huge appeal across the generations.

**Is it a modern interpretation of the story?**

It's a bit of a remix, but we're not setting it in modern times - it's set in fairytale land. It's interesting - the original story is one paragraph long. It's an elevator pitch rather than a story!

The story we have in mind - the princess is trying to get a good night's sleep and is so sensitive that she can't sleep, and there's a pea under the bed - that's all it is.

We've had a brilliant experience here at the Unicorn, where for six weeks before rehearsal started, every Saturday a group of young people and their families came in, and we worked with them to get a sense of what the story might be from their point of view; what music they like, what makes them laugh... One of the things we found all of them talked about, the children *and* the parents, was the difficulty of getting to sleep at night even without a pea under the bed. It feels as though it's a very important part of every parent and child's life - the bedtime stories or the bedtime songs.

**What are you looking forward to most about the production?**

So much! I'm particularly looking forward to seeing the audience. We had a small group of young people in on Saturday that we've been working with, who saw some of it, had a sneak preview and told us what they thought. I suppose the thing that's been really interesting is that, in drawings and in storybooks, a mattress tower with a person sleeping on the top of it is a really easy thing. When you try to build a tower of 20 mattresses and put a performer on top of it, it's very different!

If they're covered in slippery fabrics, the mattresses fall off, taking the performer with them. How do you get up a mattress tower? Do you jump up, do you climb up, what do you do to get up there? And how do we keep it still? It's quite an engineering miracle that had to be created.

.....  
**The Princess And The Pea shows at New Vic Theatre, Newcastle-under-Lyme, from Wednesday 19 until Saturday 29 June**



**BEYOND** THE STARRY NIGHT

# BEYOND *Van Gogh*

The Immersive Experience



## **BIRMINGHAM**

NEC - BIRMINGHAM

**NOW ON SALE**

**LIMITED RUN FROM 1 AUGUST**

**BOOK NOW:** [www.quaytickets.com](http://www.quaytickets.com)



annerin productions



Light entertainment from around the region



## Voices Of Evil

Old Joint Stock Theatre, Birmingham,  
Sat 29 - Sun 30 June

Self-described 'poof prince of puppets' Lachlan Werner is here joined for an evening of laughter and chaos by a green-faced witch named Brew. The witch is a puppet brought to life by Lachlan via the nowadays woefully undervalued art of ventriloquism. The show's storyline sees Brew deciding to sacrifice Lachlan - to help with his self-esteem - only to find that the endeavour inadvertently releases a sinister entity with an unbridled lust for destruction... A debut show from Lachlan, Voices Of Evil should tick plenty of boxes for anybody who likes their comedy delivered with a substantial - but in no way traumatising - side-order of horror, gore and ritualistic blood sacrifice...

## The Horne Section's Hit Show

Warwick Arts Centre, Coventry, Tues 18 June;  
Symphony Hall, Birmingham, Wed 11 September

A six-headed comedy band comprising five talented musicians and one non-musical stand-up, The Horne Section have been blowing their own trumpet to excellent effect for well over a decade now. Led by comedian (and creator of Bafta-winning television series Taskmaster) Alex Horne, and specialising in spoof and comedy songs, the boys have plenty of TV appearances to their name and also boast a chart-topping podcast. The fellas visit Warwick Arts Centre this month with a show that blends 'comedy, songs, enthusiastic dancing and a lot of mucking about'.



## Mrs Kapoor's Daughter's Wedding 2 Mauritius

The Alexandra, Birmingham, Sun 23 June

Mrs Kapoor's Daughter's Wedding scored a big hit when it toured to the Midlands, and there's every chance that this sequel - featuring the same winning blend of relatable comedy and Bollywood-style glamour - will be accompanied by a similar cascade of well-deserved plaudits when it stops off in Birmingham this month. The show's storyline is wafer-thin, but where the production really scores is with its high-

energy feelgood factor, imaginatively blending dancing and singing to create a party atmosphere that's clearly enjoyed by audiences and performers alike.

## Between The Covers Live

Birmingham Town Hall, Tues 4 June

This coming together of celebrity book worms sees actors Kacey Ainsworth and Stephen Mangan, comedian Jo Brand and bestselling author Joseph O'Connor waxing lyrical about some of their favourite reads. The show is based on the popular same-named BBC television series hosted by Sara Cox.

## Uncanny: I Know What I Saw

Patrick Studio, Birmingham Hippodrome, Sun 2 June; Regent Theatre, Stoke-on-Trent, Wed 3 July

Danny Robins, the creative force behind spooky podcast The Battersea Poltergeist and spiningtingling stage production 2:22 - A Ghost Story, here makes a welcome return with a chilling showcase of real-life stories of the supernatural. Brought to life through 'thrilling theatrical invention in a mix of projection, sound and spellbinding storytelling', the terrifying tales relate to very modern hauntings. Danny and the team will not only be recounting the strange encounters but also debating what they think actually happened in each case.



## La Voix

Crewe Lyceum Theatre, Thurs 27 June

One-time Britain's Got Talent semi-finalist La Voix has been playing the cabaret circuit for all she's worth these last few years, picking up plaudits - and devoted fans - like they're going out of fashion.

As her stage name suggests, she's an impressive vocalist, but she's also a talented impersonator and bitingly funny comedian. Past routines have seen her explaining that the only difference between performing as Shirley Bassey and Tina Turner is that, when she's impersonating Tina, she leaves the coat hanger in her dress and holds a football between her legs!

## Cirque: The Greatest Show

Theatre Severn, Shrewsbury, Mon 24 & Tues 25 June; Wolverhampton Grand Theatre, Thurs 4 July; Symphony Hall, Birmingham, Thurs 27 July; Belgrade Theatre, Coventry, Fri 13 September

Musical theatre and jaw-dropping circus combine in this intriguing touring show.

The production sees stars of the West End performing alongside 'amazing aerialists, incredible contortionists and fabulous fire jugglers' as they undertake 'thrilling feats of agility and flair'... Cirque is certainly an interesting concept, and it's to be hoped that the performers really embrace the challenge of seamlessly combining two such hugely popular art forms.





# BIRMINGHAM ROYAL BALLET

Director Carlos Acosta

Sir Frederick Ashton's

## La Fille mal gardée

25 – 28 September

**H** BIRMINGHAM  
HIPPODROME

[brb.org.uk/Fille](http://brb.org.uk/Fille)

Don't miss Birmingham Royal Ballet at the Museum  
this June. Visit [brb.org.uk/bmag](http://brb.org.uk/bmag) to find out more.

 Birmingham  
City Council

 ARTS COUNCIL  
ENGLAND



## Dance previews from across the region

## Ballet Black

The Rep, Birmingham, Thurs 13 & Fri 14 June

Award-winning Ballet Black comprises British and international dancers of black and Asian descent and takes an impressively daring approach to its work. Under the guidance of Artistic Director Cassa Pancho, the company is here making a welcome return to the Rep to perform a mouthwatering double bill...

Taking the umbrella title of *Heroes*, the show includes award-winning choreographer Mthuthuzeli November's *The Waiting Game* - a contemplation on the purpose of life, infused with a dynamic soundtrack featuring the voices of Ballet Black artists. Accompanying Mthuthuzeli's creation is a celebratory and original piece by Franco-British artist and Scottish Ballet choreographer-in-residence Sophie Laplane. Created especially for Ballet Black, the new work, titled *If At First*, explores the complexity of humanity, heroism and self-acceptance... *Heroes* has a running time of 95 minutes, including an interval.



## Black British Ballet: Island Movements

Patrick Studio, Birmingham Hippodrome, Sat 22 June

Driven by a pulsating soundtrack of reggae, calypso and contemporary black British music, this 30-minute show explores the impact of the Windrush generation's experiences on their families, communities and society.

The production is presented as part of a project celebrating and sharing the hidden history of black pioneers in British ballet.

A 45-minute Q&A session will take place after the show.

## Ballet Cymru: Romeo A Juliet

New Vic Theatre, Newcastle-under-Lyme, Mon 10 June; The Roses, Tewkesbury, Fri 28 June; Lichfield Cathedral, Thurs 11 July

The proudly Welsh and impressively creative Ballet Cymru has garnered a reputation for presenting productions which are innovative, challenging and original. Touring to a host of venues throughout the UK on an annual basis, the company is here making a welcome return to the Potteries with its energetic adaptation of *Romeo & Juliet*, a show which earned plenty of praise the last time it visited the New Vic Theatre.

## KVN Dance Company: Coppelia

Albany Theatre, Coventry, Thurs 20 June

Eccentric toy maker Dr Coppélius' lifesize clockwork doll, Coppelia, causes quite a stir - not only in the heart of the red-blooded Franz but also in the mind of his jealous fiancée, Swanilda, who foolishly mistakes Coppélius' creation for a flesh-and-blood rival...

KVN Dance Company fuse classical ballet with contemporary dance and hip-hop to present a show that brings together Leo Delibes' dazzling score - remixed by Richard Berg - with some truly impressive choreography. The production runs for just short of two hours and includes an interval.



## Echoes: Mi Flamenco

Theatre Severn, Shrewsbury, Fri 21 June

Filmic imagery, music to stir the soul and extraordinarily emotive flamenco dancing is the winning combination of ingredients with which Mi Flamenco has cooked up this eagerly anticipated feast of entertainment. "Our inspiration comes from how flamenco speaks to us," explains the company. "We are constantly evolving to find ways of expressing that voice to our audiences; to intrigue and inspire."

## Nadiya & Kai: Behind The Magic

Malvern Theatres, Thurs 13 June; Symphony Hall, Birmingham, Mon 24 June

"I can't wait for everyone to see our new show," says Ukrainian dancer Nadiya Bychkova in talking about this latest on-stage team-up with her real-life partner and fellow *Strictly* star Kai Widdington. "It's so exciting to be able to throw a lifetime of my thoughts, visions and dreams into *Behind The Magic*, and to create something unique and inspiring with the most talented and incredible people."

Featuring 'fabulous outfits, wonderful music and, of course, sensational dancing', the production invites its audience behind the scenes to witness 'how the magic comes together'.

"Starring in *Once Upon A Time*, our first headline tour, was the realisation of a lifelong dream for both Nadiya and I, a real career highlight," says Kai. "Now we get the chance to do it all over again this summer with our brand-new show!"





## Film highlights in June...



### Inside Out 2 CERT PG (100 mins)

With the voices of **Amy Poehler, Phyllis Smith, Lewis Black, Tony Hale, Liza Lapira, Maya Hawke** Directed by **Kelsey Mann**

Disney and Pixar's first Inside Out film proved to be an unexpectedly huge hit, so a sequel was of course an absolute no-brainer.

And speaking of brains, that's exactly where this second film yet again takes its audience; into the mind of newly minted teenager Riley. The visit there coincides with a profoundly significant happening - headquarters is undergoing a sudden demolition, to make room for something entirely unexpected: new Emotions! Joy, Sadness, Anger, Fear and Disgust, who've long been running a successful operation by all accounts, aren't sure how to feel when Anxiety shows up. And it looks like she's not alone...

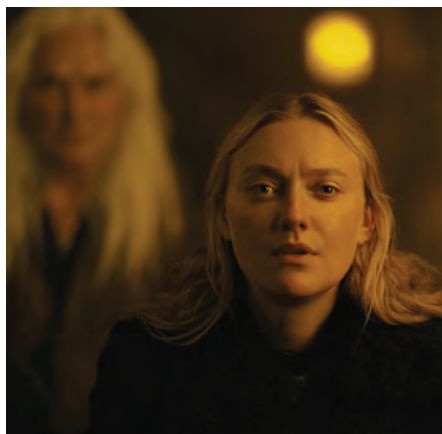
**Released Fri 14 June**

### The Watched CERT tbc (102 mins)

Starring **Dakota Fanning, Georgina Campbell, Olwen Fouère, Siobhan Hewlett, Hannah Howland, Alistair Brammer**  
Directed by **Ishana Shyamalan**

When young artist Mina gets stranded in an expansive, untouched forest in western Ireland, she unknowingly becomes trapped alongside three strangers who are watched and stalked by mysterious creatures every night... Having scored a significant hit as director with last year's *Knock At The Cabin*, M Night Shyamalan now looks set to enjoy further success - on this occasion as co-producer - with this spine-tingling adaptation of AM Shine's supernatural horror novel. The film sees Night Shyamalan's daughter, Ishana, taking the directorial reins for the very first time.

**Released Fri 7 June**



### The Bikeriders CERT 15 (116 mins)

Starring **Jodie Comer, Austin Butler, Tom Hardy, Michael Shannon, Mike Faist, Boyd Holbrook** Directed by **Jeff Nichols**

Jodie Comer yet again displays her star quality in this critically acclaimed biker movie. She's joined by Austin Butler, whose impressive performance offers further evidence - were any to be needed - that he's got plenty more in his acting locker than his often-spellbinding impersonation of Elvis from a couple of years back.

Capturing a rebellious time in America, when the culture and people were changing at

seemingly breakneck speed, *The Bikeriders* sees a strong-willed Kathy (Comer) finding herself inextricably drawn to Benny (Butler), the newest member of The Vandals, a Midwestern motorcycle club led by the enigmatic Johnny (Tom Hardy, in excellent form).

Much like the country around it, the club begins to evolve. As it transforms from a gathering place for local outsiders into a dangerous and violent underworld, Benny finds himself forced to choose between Kathy and his loyalty to The Vandals...

**Released Fri 21 June**



## Kinds Of Kindness CERT tbc (164 mins)

Starring **Emma Stone, Jesse Plemons, Willem Dafoe, Margaret Qualley, Hong Chau, Joe Alwyn** Directed by **Yorgos Lanthimos**

"It's a contemporary film, set in the US," director Yorgos Lanthimos explained to the Guardian, in talking about his latest movie, Kinds Of Kindness. "Three different stories, with four or five actors who play one part in each story, so they all play three different parts. It was almost like making three films, really."

Following on from *The Favourite* and *Poor Things*, Yorgos once again teams up with Emma Stone, calling to mind other well-established director-actor partnerships such as Scorsese and De Niro, Tarantino and Samuel L Jackson. This latest collaboration is an epic (at nearly three hours in length) triptych fable, following a man without choice who tries to take control of his own life; a policeman who is alarmed that his wife, who was missing-at-sea, has returned and seems a different person; and a woman determined to find a specific someone with a special ability, who is destined to become a prodigious spiritual leader... The film has met with a mixed reception from the critics. That said, there does seem to be a general consensus of opinion about one thing: even if *Kinds Of Kindness* is an off-kilter affair unlikely to be to everybody's taste, it certainly makes for an absorbing watch.

**Released Fri 28 June**



## A Quiet Place: Day One

CERT 15 (100 mins)

Starring **Lupita Nyong'o, Joseph Quinn, Djimon Hounsou, Alex Wolff, Maliike Jubal, Thea Butler** Directed by **Michael Sarnoski**

The sightless aliens with supersharp hearing and an insatiable lust for blood are back for a third movie. This one's a prequel bereft of A-listers, but don't let that worry you - if the first two films in the franchise are anything to go by, another nailbitingly tense cinematic experience awaits.

Whereas the previous movies were set in remote areas, this one features the city streets of Brooklyn in New York as its backdrop. And being a prequel, it concerns

itself with what happened to civilisation *before* the start of the original film, which dedicated fans of the franchise will recall kicked off on 'Day 89'. Plenty of scope there, then, to tell the gripping tale of why Earth went silent after alien invasion..

"The biggest thing for me was that the first two films very much circle around a family and these people that have established relationships," director Michael Sarnoski told Entertainment Weekly. "I wanted to explore a little more of what it would look like for strangers to have to go through the end of the world together."

**Released Fri 28 June**



## Horizon: An American Saga - Chapter 1

CERT tbc (181 mins)

Starring **Kevin Costner, Dale Dickey, Jena Malone, Sienna Miller, Sam Worthington, Michael Angarano** Directed by **Kevin Costner**

Having won a best director Oscar for 1990's *Dancing With Wolves* - and then watched on as the next film he helmed, *The Postman*, accumulated scorn and derision rather than plaudits and glittering prizes - Kevin Costner here takes the directorial chair for only the fourth time in his filmmaking career.

A multi-faceted chronicle, *Horizon: An American Saga* spans the four years of the Civil War and promises to take audiences on an emotional journey across a country in brutal conflict with itself.

Chapter two is being released later in the summer, with chapter three currently in the works and a fourth film scheduled to follow.

**Released Fri 28 June**







Image © Claudette Johnson / photo: Andy Keate

# DOWN TO A FINE ART

A jewel in the crown of the Midlands art scene,  
Birmingham's Barber Institute reopens its doors this month...





## Birmingham's Barber Institute of Fine Arts reopens late June after almost nine months of building improvement works. This year's highly anticipated exhibitions include a first solo show in the Midlands from Turner Prize nominee Claudette Johnson, botanical drawings from the Victoria & Albert Museum in London, and a fresh look at Pre-Raphaelite paintings that's not to be sniffed at...

The Barber, situated in the green, airy surroundings of Birmingham University, has been closed for building improvement work for almost nine months. Its return has been highly anticipated by regular visitors, who will be looking forward to seeing beloved works from the collection again when the gallery reopens on Saturday 22 June.

The collection contains works by masters ranging from Botticelli to Rubens, and from the Pre-Raphaelites to the Impressionists, as well as esteemed 20th century artists.

"We've always been regarded as a small art gallery with a collection that punches far above its weight," says Andrew Davies, communications & marketing manager at the Barber. "It's like a mini National Gallery."

One of the interesting things about the Barber's permanent collection is its examples of unusual works by well-known masters. The two Rubens masterpieces, for instance, are not epic scenes of Biblical stories or classical history. Instead, there's a tranquil landscape of the artist's estate in Belgium, and an unassuming yet masterful portrait of a monk lost in his devotions.

The gallery will this year host exciting exhibitions of botanical illustrations from the V&A and well-loved Pre-Raphaelite works explored in a new way. There will also be a celebration of contemporary Turner Prize nominee Claudette Johnson.

The Johnson exhibition was confirmed by the Barber's current director, Professor Jennifer Powell, before the artist's shortlisting for the Turner Prize. Her work often takes the human figure as its subject, and in particular explores the experience of Black women, including herself. Entitled *Darker Than Blue*, the exhibition includes a loan from Coventry's Herbert Art Gallery and brand-new works created with the Barber show in mind. *Darker Than Blue* is Johnson's first solo show in the Midlands. Having studied fine art at Wolverhampton School of Art (now part of Wolverhampton University), she was a key member of the Blk Art Group, and her work will be exhibited at the Turner Prize show at Tate Britain in September, immediately after being on display at the Barber.

"It's wonderful that Claudette has been nominated and recognised for her incredible work," says Professor Powell. "It is really powerful, with striking and confident line work - and her figures always hold your gaze."

Opening along with the wider gallery this month, Johnson's exhibition is a fitting celebration to mark the completion of the

Barber's first phase of scheduled redevelopments.

The main change to the venue that regular visitors might notice is the complete redevelopment of the Lady Barber exhibition gallery, named after the venue's founder. The exhibition space, originally a painting store and technicians' workshop, has been taken back to the bare bricks and rebuilt. Not originally created for use as a gallery, the room now contains state-of-the-art lighting and air-conditioning systems, as is appropriate for a gallery that frequently houses priceless works.

The conversion of this space in a Grade-1 listed building has been handled with care, creating an unmistakably modern gallery that is also in keeping with the four main historic picture galleries.

Another thing eagle-eyed visitors might notice is a change to the way Renaissance paintings and sculptures are exhibited in the Green Gallery. Previously displayed chronologically, the Barber has been working for over a year with Chloe Church, National Gallery Curatorial Trainee, who developed an alternative way of looking at the paintings.

The Green Gallery will now group works by theme within the broad chronological pattern, with bay sections devoted to shared subjects such as devotional works, portraiture, the influence of ancient Greece and Rome, and Venetian art. The re-grouping gives context to different works, and the opportunity to explain why those subjects were repeatedly chosen.

The second phase of redevelopment will begin in early 2025, so art fans in the Midlands are encouraged to make the most of the Barber's exciting programme before the next wave of building improvement begins.

The focus of the redevelopment will swap from improving the gallery spaces to enhancing the visitor experience, and retrofitting a ventilation system into the Barber's elegant concert hall.

The original 1930s Art-Deco concert hall is situated in the middle of the building, without external ventilation, so the building works will include a new system which extracts 'used' air from the hall and pumps in fresh air.

A frequent problem when working in historic buildings is the need to make sure they are accessible to as many people as possible. As a 1930s building, with steps up to the main entrance, the Barber can prove hard to navigate for some. There is step-free rear access, but the works scheduled for 2025 will

create an easier journey into the building for visitors with additional mobility needs.

Before the final stage of redevelopment begins, the Barber's 2024 programme has much to offer. Lunchtime gallery talks, open to everyone, will begin again - the first being an introduction to Claudette Johnson's exhibition on Wednesday 26 June. There's also a programme for younger audiences, including a family festival in August, upholding Lady Barber's mission to promote 'the study and encouragement of art and music'.

Other exhibitions include *The Hidden Lives Of Plants*, a selection of visually lovely botanical watercolours, drawings and prints from London's V&A Museum, and *Women In Power*, assembled from the Barber's extensive coin collection.

Autumn's exhibition, *Scent And The Art Of The Pre-Raphaelites*, meanwhile, will explore largely forgotten ideas about smell in the 19th and early 20th century. Apparently, there was actually a belief in Victorian times that you could smell a rainbow - it smelt like spring flowers and meadows. One of the paintings to be lent to the show by Birmingham Museum & Art Gallery - *The Blind Girl*, by Millais - depicts two young girls breathing in the scent of the rainbow.

The exhibition is going to be a multi-sensory experience, complete with concealed machines pumping spritzes of scent in the gallery at the press of a button.

And this isn't the only multi-sensory installation in the upcoming season either - as Professor Powell explains: "In Claudette's show there will be a sound installation by Trevor Mathison, who's a contemporary sound artist. Trevor has created a soundscape that combines aspects of the Barber experience - the echoes and sounds of the galleries - with the sound of Claudette working in the studio.

"It's the first time that Claudette and Trevor have ever worked together as well, and it's the first time that Claudette has had this sound aspect in an exhibition.

"We can't wait to welcome visitors back to the Barber and to our exhibitions."

.....

**The Barber Institute of Fine Arts reopens on Saturday 22 June, along with the exhibitions Claudette Johnson: *Darker Than Blue* and *The Hidden Lives Of Plants*. *Scent And The Art Of The Pre-Raphaelites* opens on Friday 11 October**



THE  
**BARBER**  
INSTITUTE OF  
FINE ARTS

UNIVERSITY OF  
BIRMINGHAM

**Claudette  
Johnson**  
Darker Than Blue

22 June - 15 September 2024

**FREE  
ADMISSION** Barber.org.uk  
Visit by train:  
University station

© Claudette Johnson / The Courtauld. Photo: David Barber.

© Victoria and Albert Museum, London

**The Hidden  
Lives of  
Plants** **ALSO  
SHOWING**

BOTANICAL ILLUSTRATIONS  
FROM THE V&A

22 June - 10 November 2024

Developed in collaboration with the V&A

**V&A**

THE COVENTRY MUSIC MUSEUM  
http://www.covmm.co.uk

**Our town**

OUR NEW EXHIBITION

"A TRIBUTE TO  
THIS TOWN  
THROUGH  
THE EYES OF A  
SUPPORTING ARTIST"  
INCLUDES MEMORABILIA AND  
COSTUMES FROM THE SHOW

**ALSO  
THE**

"STILL WORKING FOR THE RAT  
RACE RODDY RADIATION WALL"

**KIDS GO  
FREE**

With thanks to

PLUS OUR NEW  
TERRY HALL TRIBUTE

RIDE IN THE ACTUAL  
GHOST TOWN CAR

EMAIL: TENCTON@HOTMAIL.COM OR CALL 07971171441  
THE COVENTRY MUSIC MUSEUM, THE 2-TONE VILLAGE, UNIT 3, RD 74-80 WALSGRAVE RD, COVENTRY, CV2 4ED

**What's On**  
MEDIA GROUP

**STAY IN  
THE LOOP!**

SIGN UP TO OUR FORTNIGHTLY  
E-NEWSLETTER TO RECEIVE THE  
**LATEST ENTERTAINMENT NEWS**  
FROM ACROSS THE REGION -  
AS WELL AS **COMPETITIONS**  
AND **OFFERS** FOR THEATRES,  
GIGS, DINING OUT AND MORE...

**SIMPLY SCAN THE QR TO SIGN UP TODAY**



## Visual Arts previews from around the region

**Acts Of Creation: On Art And Motherhood**

Midlands Arts Centre (MAC), Birmingham, Sat 22 June - Sun 29 September

A Hayward Gallery Touring exhibition that 'plunges into the joys and heartaches, mess, myths and mishaps of motherhood', Act Of Creation features more than 100 artworks - 'from the feminist avant-garde to the present day'.

The exhibition explores the lived experience of being a mum, offering a 'complex account' that engages with contemporary concerns about gender, caregiving and reproductive rights.

**Collecting Coventry**

Herbert Art Gallery &amp; Museum, Coventry, until Sun 27 April 2025

Seventy-five years of collecting is being celebrated in this brand-new and long-running exhibition.

Featuring a selection of objects dating from the founding of the Herbert Art Gallery in 1949 through to the present day, the show is being presented across four of the Herbert's rooms.

Featured objects and curiosities include a 4.5 billion-year-old meteorite, a Covid testing kit, LS Lowry's famous painting of Ebbw Vale and a number of items being displayed for the very first time.

**Summer Exhibition**

Warwick Arts Centre, Coventry, until Sun 23 June

Coventry's Warwick Arts Centre is hosting three concurrent exhibitions this month... Bologna-based Rwandan artist Francis Offman's Economics Of Painting showcases canvases that tell stories of friendship, conversation and travel... Swiss creative Nicole Bachmann's There Are Tides In The Body is a new film commission. Set across two locations in Kent and Spon End in Coventry, the film considers the body as a site of knowledge by using movement and voice to 'embody vocabulary' and create new meaning... Completing the trio of exhibitions, Activate/Assemble/Amplify contemplates the creative future of Coventry's children and young people. Sharing artworks and performances made throughout the year as part of youth and schools projects, the exhibition explores the participants' vision for themselves and their city.

**Jaskirt Dhaliwal-Boora**

Ikon Gallery, Birmingham, Wed 12 - Sun 23 June

This collaboration between Ikon and local mental-health consortium Living Well features photographs taken by Birmingham-born artist Jaskirt Dhaliwal-Boora.

Jaskirt has been working with local communities, taking photographic portraits against the backdrop of the city's green spaces, and exploring the benefits of nature in terms of people's health. After its stay at Ikon, the exhibition heads to the city's Selly Oak district, where it will be showcased at the Living Well Consortium and Birmingham Mind venue Grounded - a community-focused wellbeing cafe & hub.

**Abbey Road Music Photography Awards**

Symphony Hall, Birmingham, until Fri 14 June

Symphony Hall's collaboration with the iconic Abbey Road Studios continues this month.

Abbey Road is, of course, the London-located purpose-built recording studio made famous by its association with The Beatles.

For the past three years, the studio has run the Music Photography Awards. The initiative is designed to champion emerging and undiscovered young photographers, and to celebrate 'the unforgettable, unique and unsung musical moments' from the previous 12 months.

As part of the collaboration, Symphony Hall is hosting a month-long exhibition of work by the 2023 Music Photography Awards nominees and winners.

Across nine categories, including 'Live', 'Icon', 'Undiscovered' and 'Hip Hop 50', the exhibition offers a unique opportunity to view the photographs in a distinctive setting.

A series of masterclasses and panel talks - led by local, established music photographers and Music Photography Awards alumni - also runs across the month, in addition to special performances by emerging Birmingham-based musicians.



Image: Harry Styles by Anthony Pham (Music Moment of the Year award winner, 2023)



---

# TITANIC

—EXHIBITION—

# BIRMINGHAM



BOOK NOW:

[WWW.TITANICBIRMINGHAM.CO.UK](http://WWW.TITANICBIRMINGHAM.CO.UK)

JULY 27 - AUG 25  
2024



**nec**  
birmingham



## Events previews from around the region

**BBC Good Food Show Summer** NEC, Birmingham, Thurs 13 - Sun 16 June

Boasting tasty food, mouthwatering recipes, and in-the-kitchen entertainment served up by some of the nation's most celebrated chefs, the summer edition of the BBC Good Food Show makes a welcome return mid-month.

TV chefs including Michel Roux (pictured), James Martin and Nadiya Hussain will be

sharing their culinary skills and cooking live on stage.

The show's ever-popular shopping village returns too, providing visitors with plenty of opportunity to 'taste, try and buy' a wide range of delicious produce from an impressive selection of food & drink suppliers.

**Weston Park Air Show International**

Weston Park, Shropshire, Fri 14 - Sun 16 June

Model and full-sized aircraft taking to the skies, off-road and circuit model-car racing, model boats and helicopters, trade stands, food & drink stalls and a craft fair all feature among the attractions at this three-day show. Youngsters are catered for too, courtesy of a funfair, and there's live music to enjoy in the evenings.

Pyrotechnics, gliders and fireworks light up the sky on the Saturday night.

**Warwickshire Game & Country Fair**

Wroxall Park, nr Warwick, Sat 22 & Sun 23 June

Set within the surroundings of Wroxall Park, Warwickshire Game & Country Fair returns this month.

Visitors can enjoy a mixture of main-arena attractions running throughout the day - including falconry and scurry driving - alongside a host of smaller country sports arenas and workshops.

The show's World of Dogs attraction features a variety of dog displays, the Shooting Village provides visitors with the opportunity to have a go at clay shooting, and the Craft Village offers a wide variety of items to buy. The fair's popular Chainsaw Carving Area is back too, featuring daily 30-minute speed carves during which all chainsaw carvers race against the clock to produce a carving that is then sold at auction.

**BBC Gardeners' World Live** NEC, Birmingham, Thurs 13 - Sun 16 June

Green-fingered visitors to BBC Gardeners' World Live will, as usual, find plenty to delight them.

As well as taking ideas and inspiration from the show gardens and displays, attendees can also pick up tips and tricks from TV gardeners including Monty Don, Frances Tophill and Adam Frost.

Meanwhile, the Floral Marquee and Plant

Village will boast a vast array of top-quality nurseries from which to make purchases for your next gardening project.


And if all that gardening leaves you peckish, be sure to check out the neighbouring BBC Good Food Show Summer (see above), entry to which is included with all tickets to Gardeners' World Live.



A decorative border surrounds the central text. On the left, there is a vertical arrangement of various flowers, including daisies and purple blossoms, with green foliage. On the right, there is a vertical arrangement of fresh fruit, including strawberries, raspberries, blackberries, and macarons. At the top, there is a horizontal arrangement of fruit and flowers. At the bottom, there is a horizontal arrangement of fruit and flowers.

Two shows, one ticket, a great day out!

**BBC**  
**Gardeners' World** **Live**  
&  
**goodFOOD**  
**SHOW SUMMER**

Shows sponsored by:  **LEXUS**

**13-16 June 2024 | NEC Birmingham**



**BOOK  
NOW**

**Save 15%\* on standard tickets when you quote WHAT15 by 6 June**  
**[bbcgardenersworldlive.com](https://bbcgardenersworldlive.com) | [goodfoodshow.com](https://goodfoodshow.com)**

\*Valid on adult/Over 65s standard entry tickets only. Not valid on VIP, 2-day tickets, added extras, or with any other offer. Offer ends 23:59pm on 6 June 2024. £3.95 transaction fee per advance order. Not all experts appear on all days, see website for details. Details correct at time of print. The Gardeners' World logo is a trademark of the BBC. © BBC. The Good Food trade mark is used under license from Immediate Media Company London Limited. Organised and presented by River Street Events at Immediate Media.



## Events previews from around the region



### The World of Park & Leisure Homes Show

NAEC Stoneleigh, Warwickshire, Fri 28 - Sun 30 June

As the biggest event of its kind in the UK, The World of Park & Leisure Homes Show provides a fantastic opportunity to discover and consider a leisure lifestyle. Visitors can view more than 50 state-of-the-art leisure lodges and residential park

homes, check out the latest designs and innovations, and discover affordable luxury. There's also the chance to pick up some expert advice and find out more from people already enjoying the leisure lifestyle.

### RAF Cosford Air Show

RAF Museum Midlands, Cosford, Sun 9 June

The RAF Cosford Air Show returns this month with an action-packed flying display that features powerful demonstrations of modern military aircraft from the Royal Air Force and international military partners. Participants include F35 Lightning from 617 Sqn, the RAF Typhoon Display Team and the ever-popular Red Arrows.

On-the-ground entertainment comes in the form of, among other attractions, static displays of aircraft, a Vintage Village with reenactors, and STEM hangars offering family-friendly interactive activities.



### Classic & Vintage Commercial Show

British Motor Museum, Gaydon, Warwickshire, Sat 8 & Sun 9 June

Take a nostalgic trip back in time by checking out hundreds of pre-2003 commercial vehicles at British Motor Museum this month. The display features Morris Minor and Ford Transit vans, familiar marques of the 1950s and 60s - including Fodens, ERFs, AECs and Leylands - and Volvos and Scania's, which took over the roads of Britain from the 1970s onwards.

Visitors can also take advantage of a large autojumble and, within the museum, cast their eye over two model shows.



### Step Back To The 1940s

Severn Valley Railway, Bewdley, Nr Kidderminster, Sat 29 & Sun 30 June and Sat 6 & Sun 7 July

A taste of all things vintage comes to the Severn Valley Railway this month, as the 16-mile line and all of its stations host a festival of 1940s-themed fun.

Taking place across two weekends, the event features an array of attractions and entertainment, including 1940s singers and dancers, a wartime wedding, and jitterbug sessions. There's even the chance to hear a rousing speech by Winston Churchill!

Vintage traders will be selling their wares at the Engine House at Highley, with a flypast from the Lancaster Bomber on the Sunday of both weekends. New for 2024 is the chance to meet Herr Flick, Helga and Lieutenant Gruber from the much-loved BBC TV series 'Allo 'Allo!.

Big Band shows take place at Kidderminster station on the Saturday evening of both weekends.



THE COUNTRYSIDE COMES TO LIFE AT...

# WARWICKSHIRE GAME & COUNTRY FAIR

Saturday & Sunday

June 22nd & 23rd • 10am-6pm



Living  
Heritage  
Events

Bringing back the good times...



it's a really  
**GOOD  
DAY OUT**  
for the Family and  
Countryman



ALL DAY ARENA ENTERTAINMENT • WORLD OF DOGS  
FALCONRY & FISHING • SHOOTING VILLAGE • FAMILY ENTERTAINMENT  
CRAFT VILLAGE • FOOD SHOW & LOTS OF COUNTRY SPORTS TO TRY



**Come and  
visit us ...**

at this stunning venue for  
an action packed event

Adults: £18.00 Over 65s: £17.00 Children: £6.00

BOOK YOUR TICKETS ONLINE NOW

[www.livingheritagecountryshows.com/tickets](http://www.livingheritagecountryshows.com/tickets)

WROXALL PARK, WROXALL, NEAR WARWICK CV35 7NB

Tel 01283 820548

[www.livingheritageevents.co.uk](http://www.livingheritageevents.co.uk)

Step back to the  
**1940s**

SATURDAY 29 &  
SUNDAY 30 JUNE,  
SATURDAY 6 &  
SUNDAY 7 JULY

**THE  
BIG BAND  
SHOW**  
A festival of 1940s  
music each  
Saturday night!

SEVERN VALLEY  
RAILWAY

PRE-BOOK TICKETS AND  
SAVE AT [SVR.CO.UK](http://SVR.CO.UK)

**ROYAL THREE  
COUNTIES SHOW**  
in partnership with  
**HOWDEN**  
14-16 JUNE 2024

OUTDOOR FAMILY ACTIVITIES  
FOOD & DRINK  
FESTIVAL  
LIVE ARENA DISPLAYS  
OVER 6000  
ANIMALS TO SEE  
KIDS GO FREE!

GREAT CELEBRITY  
LINE UP INCLUDING  
MATT BAKER MBE (SAT)  
KALEB COOPER (SUN)

**A BUMPER CROP OF FARMING, FOOD & FAMILY FUN**  
For Worcestershire, Herefordshire, Gloucestershire and beyond

**BOOK NOW**  
[royalthreecounties.co.uk](http://royalthreecounties.co.uk) 0344 338 5400  
Advance tickets: Adults £23\* | Under 16s free  
Three Counties Showground, Malvern, WR13 6NW  
\* + £0.85 ticketing fee per ticket

@3CountiesShows  
f i o



## Events previews from around the region



### Royal Three Counties Show

Three Counties Showground, Malvern, Fri 14 - Sun 16 June

Hailed as one of the UK's biggest celebrations of the great British countryside, the Royal Three Counties Show offers a long weekend of animal encounters, interesting displays and expert agricultural insights. Special guests at this year's get-together include Bake Off winner Matty Edgell, pop star-turned-farmer JB Gill, Countryfile's Matt

Baker and Clarkson's Farm's Kaleb Cooper. Other highlights include The Future of Farming Zone - hosting a line-up of informative talks and Q&A sessions - the Food & Drink Theatre, the Equine Village, the Countryside Arena and Adventure Avenue.

### Potfest By The Lake

Compton Verney, Warwickshire, Fri 21 - Sun 23 June

An artisan ceramics market showcasing the work of 80 of the UK's finest ceramics makers, Potfest returns to Compton Verney for a fourth year and has become a highlight in every potter's calendar. Work by local and continental makers also features.



### Comic Con Midlands

Telford International Centre, Shropshire, Sat 15 & Sun 16 June

Celebrating all things pop culture, Comic Con Midlands heads to Telford this month. Numerous familiar faces from movies, TV, streaming, gaming, anime and sports entertainment will be in attendance, including Lucy Lawless, Jodie Whittaker and Alyssa Mialno.

The show also features: unique props and set builds; cosplayers strutting their stuff on stage; retro and modern gaming areas; and trader and artist zones.

### Adventure Bike Rider Festival 2024

Ragley Hall, Warwickshire, Fri 28 - Sun 30 June

Back for its fifth year, this popular event brings together the adventure motorcycling community for three action-packed days. The festival features 40km of exclusive on-site trails, guest speakers across four stages, the world's biggest motorcycle manufacturers and over 130 exhibitors.

Away from the biking, attractions include more than 20 live bands and over 50 food vendors.



### Cheltenham Science Festival

Montpellier Gardens, Cheltenham, Tues 4 - Sun 9 June

Cheltenham Science Festival makes a welcome return this month, providing a platform for scientists, futurologists and thought-leaders to help make sense of the world around us. Visitors are guaranteed a creatively curated programme to spark their curiosity, with lots of free family activities available to enjoy

alongside a range of ticketed events. Highlights include FameLab - the largest public-facing science communication competition and training programme in the world - and Voicebox - a visually striking, Instagrammable space presenting free events for young talent.





Shropshire Horticultural Society  
Charity Number: 501564



# Shrewsbury Flower Show

Friday 9th and Saturday 10th August 2024

SO MUCH MORE THAN A FLOWER SHOW

FRIDAY 9TH & SATURDAY 10TH  
AUGUST 2024

TICKETS ON SALE NOW

FREE ENTRY FOR KIDS 15 AND UNDER WHEN  
ACCOMPANYING A PAYING ADULT



For further information call 01743 234050 [www.shrewsburyflowershow.org.uk](http://www.shrewsburyflowershow.org.uk)



*Your week-  
by-week  
listings guide*  
**June 2024**

# thelist



Lea Salonga at Wolverhampton Grand Theatre - Fri 21 June

Music | Comedy | Theatre | Dance | Events | Visual Arts | and more!

## What's On

Sat 1 - Sun 9 June



Ed Gamble - Victoria Hall,  
Stoke-on-Trent

**Thurs 6 June**

Mon 10 - Sun 16 June



Jarrod Dickenson - Morris Hall,  
Shrewsbury

**Sun 16 June**

Mon 17 - Sun 23 June



Circus Raj - Ludlow Assembly  
Rooms, South Shropshire

**Sun 23 June**

Mon 24 - Sun 30 June



Budapest Café Orchestra -  
Theatre Severn, Shrewsbury

**Thurs 27 June**



## VISUAL ARTS IN THE MIDLANDS

### Barber Institute of Fine Arts

**CLAUDETTE JOHNSON: DARKER THAN BLUE** The Turner Prize nominee's first solo exhibition in the Midlands, including several new works, Sat 22 June - Sun 15 Sept

**WOMEN IN POWER: COINS FROM THE BARBER COLLECTION** Spanning nearly 2,000 years and more than 2,500 miles, the exhibition explores historical women who have appeared on coins, Sat 22 June - Sun 26 Jan 2025

### THE HIDDEN LIVES OF PLANTS

Exhibition of botanical illustrations, on tour from London's Victoria & Albert Museum, marking the first project in a new annual exhibition partnership, Sat 22 June - Mon 10 Nov

### Birmingham Museum & Art Gallery

**VICTORIAN RADICALS** Exhibition presenting works by 19th-century artists, designers & makers, from the Pre-Raphaelites to the arts & crafts movement, until Thurs 31 Oct

### New Art Gallery, Walsall

#### THE WORLD THAT BELONGS TO US

Featuring works by intergenerational artists from the South Asian diasporas of the UK, US and Canada, the exhibition explores community, belonging, migrant storytelling and queer world-making, until Sun 9 June

**...AS WE GATHERED ON THE SHARDS OF A FALLEN MIRROR BALL** Exhibition of new work by Sophia-Layla Afsar (based in Karachi, Pakistan) and Alex Billingham (based in the West Midlands) which follows on from the artists' back-to-back residences in Karachi and Walsall, until Sun 7 July

**THE MAGIC MONEY TREE** 'Epic piece of protest art' in which documentary photographer Kirsty Mackay, working collaboratively with groups and individuals across England, explores the impact of the cost-of-living crisis, until Sun 28 July

### The Potteries Museum & Art Gallery, Stoke-on-Trent

**WILD WOODS** An interactive journey through a year in the life of a woodland. For all ages, until Sun 3 Nov

### Wolverhampton Art Gallery

**VIRASAT: BRITISH SOUTH ASIAN HERITAGE, CULTURE AND EXPERIENCE FROM 1950 - 2000** Virāsāt, meaning legacy or inheritance in Hindi, delves into the heritage of British South Asian migration, diasporic culture and lived experience, until

Sun 16 June

**ZIDANE: A 21ST CENTURY PORTRAIT** A film by contemporary artists Douglas Gordon and Philippe Parreno, capturing French superstar-footballer Zinedine Zidane from multiple angles and in real time over the course of a single match, Sat 29 June - Sun 20 Oct

**POP THROUGH A QUEER LENS** An exhibition co-produced by members of Wolverhampton's LGBTQIA+ community, presenting new ways of understanding some of the Gallery's best-loved artworks, until Sun 3 Nov

### Shrewsbury Museum & Art Gallery

**STORY TIME TRAIL: THE WORLD OF PETER RABBIT** Immersive exhibition for children aged six and younger. Crawl under the garden gate and hide in a watering can, 'just like Peter Rabbit!', until Sun 30 June

**THE AUSTIN VARIATIONS** Exhibition from contemporary artist Vicky Roden exploring how human remains are displayed in museum collections, and the alternative stories they could tell, until Sun 30 June

**MARTIN WOOD, TOWN CRIER** A celebration of the world's tallest, and the UK's second-longest-serving town crier, Sat 1 - Sun 23 June

### Elsewhere:

**THE HIVE LEGACY: CONNECTING COMMUNITIES CREATIVELY** Unique heritage exhibition - designed by The Hive's Young Curators team, until Tues 18 June, The Hive, Shrewsbury

**VANESSA CUTLER: JOURNEYS AND HORIZONS** Exhibition of Cutler's glassmaking - inspired by the sky, the sea and the horizon - which employs both digital technology and traditional casting processes, until Sun 23 June, Stourbridge Glass Museum

**STAFFORDSHIRE SOCIETY OF ARTISTS** Exhibition celebrating the society's 90th year, including textiles, ceramics, assemblages, oil paintings and acrylic paintings, along with watercolours and sculpture, until Thurs 27 June, Weston Park, Staffordshire

**INSPIRED BY NATURE** Exhibition celebrating the power, beauty and influence of nature, featuring work by John Nash and Mary Grierson, until Thurs 31 Oct, Dudmaston, Shropshire

**BEAR STEPS GALLERY: SOLO EXHIBITION** Featuring works by Gill Stokes, Sun 23 June - Sat 6 July, Bear Steps Gallery, Shrewsbury



Jools Holland - Wolverhampton Grand Theatre

## Gigs

**RIDING THE LOW + JOSEPH HOOLIGAN + WILF SPIV** Sat 1 June, Hare & Hounds, Birmingham

**JAY SEAN + VÉYAH + KAYAM** Sat 1 June, O2 Institute, Birmingham

**THE ROSADOCS** Sat 1 June, O2 Institute, Birmingham

**YES** Sat 1 June, Symphony Hall, B'ham

**VOX POCKETS** Sat 1 June, The Rhodehouse, Sutton Coldfield

**THE COVER DUCKS** Sat 1 June, 45Live, Kidderminster

**ARRIVAL - THE HITS OF ABBA** Sat 1 June, Walsall Arena & Arts Centre

**BORN IN THE 80S** Sat 1 June, The River Rooms, Stourbridge

**ARCTIC NUMPTIES** Sat 1 June, The Robin, Bilston

**EDGAR MACIAS QUINTET** Sat 1 June, Katie Fitzgerald's, Stourbridge

**OTIS GIBBS** Sat 1 June, Birchmeadow Centre, Broseley, Shropshire

**LADY MAISERY, JIMMY ALDRIDGE & SID GOLDSMITH** Sat 1 June, Newhampton Arts Centre, Wolverhampton

**ROCKY OSTRICH + MATCHFIXING** Sat 1 June, The Sugarmill, Stoke-on-Trent

**WHITESNAKES JOURNEY** Sat 1 June, Eleven, Stoke-on-Trent

**RICHARD THOMPSON** Sat 1 June, Victoria Hall, Stoke-on-Trent

**ALFIE BOE** Sat 1 June, Regent Theatre, Stoke-on-Trent

**R CAJUN AND THE ZYDECO BROTHERS** Sat 1 June, Foxlowe Arts Centre, Leek, Staffs

**EMILIO SANTORO AS ELVIS** Sat 1 June, Stafford Gatehouse Theatre

**SHOWADDYWADDY** Sat 1 June, The Prince Of Wales Theatre, Cannock

**GLORY DAYS - BRUCE SPRINGSTEEN TRIBUTE** Sat 1 June, The Station, Cannock

**JIMMY ATE WORLD + WARNING + THE BLINK 182 SHOW** Sat 1 June, The Hub at St Mary's, Lichfield

**THE DOLLY SHOW** Sat 1 June, The Buttermarket, Shrewsbury

**SONS OF YODA** Sat 1 June, Albert's Shed, Southwater, Telford

**STEREOSONICS** Sat 1 June, Theatre On The Steps, Bridgnorth, South Shropshire

**GUNS FOR GIRLS + FACE OF A STRANGER + DESIRE LINES** Sat 1 June, Percy's Cafe Bar, Whitchurch, North Shropshire

**NIGHT THIEVES + CRYSTALLINE** Sun 2 June, Devil's Dog, Birmingham

**UUHAI** Sun 2 June, Castle & Falcon, B'ham

**WOLVES IN ALCATRAZ + THIS ELEGANT CHAOS +**

**FOULPLAY** Sun 2 June, Subside Bar, Digbeth, Birmingham

**DANNI NICHOLLS** Sun 2 June, The Kitchen Garden, Birmingham

**THE BLUEJAYS** Sun 2 June, The Robin, Bilston

**REBECCA FERGUSON + TOM SEALS + ELOISE VIOLA** Sun 2 June, The Civic at The Halls Wolverhampton

**TAYLOR SWIFT TRIBUTE** Sun 2 June, The Quarter at Pot Bank, Stoke-on-Trent

**THE WEST COAST EAGLES** Sun 2 June, The Station, Cannock

**THE MAGIC OF MOTOWN** Sun 2 June, Lichfield Garrick

**LUKE CONCANNON AND STEPHANIE HOLLENBERG** Sun 2 June, The Hive, Shrewsbury

**ALYSSA BONAGURA** Mon 3 June, Hare & Hounds, Birmingham

**SINATRA: RAW** Mon 3 June, New Vic Theatre, Newcastle-under-Lyme

**JAMES CHADWICK DUO** Mon 3 June, Ludlow Assembly Rooms, South Shropshire

**JOEL HOEKSTRA & BRANDON GIBBS** Tues 4 June, The Station, Cannock

**SWIM DEEP + PRIMA QUEEN** Wed 5 June, Hare & Hounds, B'ham

**FUSION** Wed 5 June, Hare & Hounds, B'ham

**BXRRELL** Wed 5 June, KK's Steel Mill, Wolverhampton

**STATUS QUO + LAURENCE**



**JONES** Wed 5 June, The Civic at The Halls Wolverhampton

**CLAIRE MARTIN & RAY GELATO** Wed 5 June, Lichfield Garrick

**CHRIS DISTEFANO** Thurs 6 June, O2 Institute, Birmingham

**RED + LANSDOWNE** Thurs 6 June, O2 Academy, Birmingham

**SPIERS AND BODEN** Thurs 6 June, Midlands Arts Centre (mac), Birmingham

**SAM SWEENEY BAND** Thurs 6 June, Brewhouse Arts Centre, Burton upon Trent

**IT'S A BEAUTIFUL NOISE - NEIL DIAMOND TRIBUTE** Thurs 6 June, Crewe Lyceum

**THE ROCKETMAN - ELTON JOHN TRIBUTE** Thurs 6 June, Aston Hall, Wrexham

**MILES HUNT** Fri 7 June, Hare & Hounds, B'ham

**COUNTRY FEST** Fri 7 June, O2 Institute, Birmingham

**ONLY THE POETS** Fri 7 June, O2 Academy, Birmingham

**PALUCH X SŁOŃ** Fri 7 June, Castle & Falcon, Birmingham

**SPANGLED** Fri 7 June, Dead Wax, Digbeth, Birmingham

**BLACK CILICE + ABDUCTION + SANGUINE RELIC** Fri 7 June, The Flapper, Birmingham

**CHARLIE PYNE QUARTET** Fri 7 June, 1000 Trades, Birmingham

**MASCA** Fri 7 June, The Victoria, Birmingham

**COLLABRO** Fri 7 June, Symphony Hall, B'ham

**FANNA-FI-ALLAH SUFI QAWWALI** Fri 7 June, Birmingham Town Hall

**THE SMASHING PUMPKINS + WEEZER** Fri 7 June, Utilita Arena Birmingham

**MR APOLLO + SMALL CHANGES** Fri 7 June, Tower Of Song, B'ham

**ULTIMATE RNB** Fri 7 June, The Rhodehouse, Sutton Coldfield

**THE SMITHS LTD** Fri 7 June, The River Rooms, Stourbridge

**ELO AGAIN** Fri 7 June, The Robin, Bilston

**RANAGRI** Fri 7 June, Katie Fitzgerald's, Stourbridge

**THE KITCHEN COLLECTIVE + THE DAISYCHAIN + HOWLING WOLVES** Fri 7 June, Newhampton Arts Centre, Wolverhampton

**JOOLS HOLLAND & HIS RHYTHM & BLUES ORCHESTRA** Fri 7 June, Wolverhampton Grand Theatre

**THE KILLERS COLLECTIVE** Fri 7 June, Eleven, Stoke-on-Trent

**GRANNY'S ATTIC** Fri 7 June, Fenton Town Hall, Stoke-on-Trent

**THE HOT RED CHILLI PEPPERS** Fri 7 June, Tamworth Assembly Rooms

**THE ULTIMATE CLASSIC ROCKSHOW** Fri 7 June, The Prince Of Wales Theatre, Cannock

**SUPALUNG** Fri 7 June, Morris Hall, Shrewsbury

**LONDON CALLING - TRIBUTE TO THE CLASH** Fri 7 June, The Buttermarket, Shrewsbury

**CANTALOOP** Fri 7 June, Albert's Shed, Southwater, Telford

**INTO THE SHADOWS** Fri 7 June, Theatre On The Steps, Bridgnorth

**FIRELIGHT TRIO** Fri 7 June, Hermon Arts, Oswestry, North Shropshire

**THE ROUGH KUTZ** Fri 7 June, Percy's Cafe Bar, Whitchurch, North Shropshire

**DARREN WHARTON'S RENEGADE** Sat 8 June, O2 Institute, B'ham

**ROSA CAELUM** Sat 8 June, O2 Institute, Birmingham

**THE SOUTHMARTINS** Sat 8 June, O2 Academy, Birmingham

**BHANGRA SYMPHONICA** Sat 8 June, Birmingham Town Hall

**BRITPOP CLASSICAL** Sat 8 June, Symphony Hall, Birmingham

**PET SHOP BOYS** Sat 8 June, Utilita Arena Birmingham

**DAN WHITEHOUSE WITH**

**GUSTAF LJUNGGREN** Sat 8 June, Midlands Arts Centre (mac), B'ham

**NU-CASTLE** Sat 8 June, The Robin, Bilston

**TOBY JEPSON + PETE K MALLY** Sat 8 June, KK Steel Mill, W'hampton

**RBC AFRO-CUBAN JAZZ ORCHESTRA** Sat 8 June, Newhampton Arts Centre, Wolverhampton

**DISCO INFERNO** Sat 8 June, Wolverhampton Grand Theatre

**BON GIOVI** Sat 8 June, Eleven, Stoke-on-Trent

**INTO THE GROOVE - MADONNA TRIBUTE** Sat 8 June, Tamworth Assembly Rooms

**ELVIS TRIBUTE - KARL MEMPHIS** Sat 8 June, Two Gates Club, Tamworth

**RIO GOLD** Sat 8 June, The Station, Cannock

**NORTHERN LIVE** Sat 8 June, Lichfield Garrick

**HUW WARREN** Sat 8 June, The Hive, Shrewsbury

**MR BLACK** Sat 8 June, Albert's Shed, Southwater, Telford

**PARLOUR CREEPERS + GLASS ATLAS** Sat 8 June, Percy's Cafe Bar, Whitchurch, North Shropshire

**THE CARPENTERS STORY** Sat 8 June, Crewe Lyceum

**THIRTY SECONDS TO MARS** Sun 9 June, Utilita Arena B'ham

**NOT RADIOHEAD + ALANISH** Sun 9 June, The Robin, Bilston

**IAN PARKER BAND** Sun 9 June, Katie Fitzgerald's, Stourbridge

**DEMON** Sun 9 June, Foxlowe Arts Centre, Leek, Staffs

**BYE BYE BABY - MUSIC OF FRANKIE VALLI** Sun 9 June, Lichfield Garrick

**SARAH RICHES - HOPELESSLY DEVOTED TO OLIVIA** Sun 9 June, The Hub at St Mary's, Lichfield

**CHARM OF FINCHES + MIA KELLY** Sun 9 June, The Hive, Shrewsbury

**AND FINALLY... PHIL COLLINS** Sun 9 June, Crewe Lyceum

## Classical Music

### EMMA GIBBINS ORGAN RECITAL

Programme includes works by Young, J.S. Bach, Wammes & more... Sat 1 June, St Laurence's Church, Ludlow, South Shropshire

### PICCADILLY SINFONIETTA: VIVALDI'S FOUR SEASONS BY CANDLELIGHT

Programme also includes works by Mozart & Vaughan Williams, Sat 1 June, Shrewsbury Abbey

### NATIONAL OPEN YOUTH ORCHESTRA

Programme includes works by Meredith, Vivaldi, Nyman & more... Sun 2 June, Birmingham Town Hall

### BIRMINGHAM PHILHARMONIC ORCHESTRA: GAELIC VISIONS

Featuring Michael Lloyd (conductor). Programme includes works by MacCunn, Arnold, Stanford & Beach, Sun 2 June, Royal Birmingham Conservatoire

**AT THE MOVIES!** Featuring Paul Carr (organ). Programme includes works by R Strauss, J Williams, H Zimmer, Beethoven & more... Sun 2 June, Holy Trinity Church, Wordsley

### A CELEBRATION OF ARIAS & SONGS

Featuring post-graduate students from the Royal Northern College of Music. Programme includes works by R Strauss, Berlin, Novello & more... Sun 2 June, St Alkmunds Church, Shrewsbury

### THOMAS TROTTER ORGAN CONCERT

Also featuring Simon Gledhill. Programme includes works by Schubert, Rutter, Benjamin & Moszkowski, Mon 3 June, Birmingham Town Hall

### LUNCHTIME CONCERT

Featuring Ranco Liu (percussion), Tues 4 June, St Alkmunds Church, Shrewsbury

### CBSO: VESPERS OF THE BLESSED EARTH

Featuring Ludovic Morlot (conductor), CBSO Chorus & University of Birmingham Voices. Programme includes works by John Luther Adams & Sibelius, Thurs 6 June, Symphony Hall, Birmingham

### DAVID SAINT ORGAN RECITAL

Programme includes works by J.S. Bach, C. V. Stanford, Franck & Monnikendam, Thurs 6 June, St Chad's Cathedral, Birmingham

### CBSO CENTRE STAGE: NORDIC TO NEW WORLD

Featuring the Career Accelerator String Fellows. Programme includes works by the Danish String Quartet, Pereira & Price, Fri 7 June, CBSO Centre, Birmingham

### LUDLOW CHORAL SOCIETY

Featuring Nicola Starkie (conductor), Carrie-Ann Williams (soprano), Samantha Lewis (mezzo soprano), Joseph Buckmaster (tenor) & Piran Legg (bass). Programme comprises Rossini's La Petite Messe Solonnelle, Sat 8 June, St Laurence's Church, Ludlow, South Shropshire

## Comedy

**BRENNAN REECE, DAVE LONGLEY, ROBERT WHITE & RAJ POOJARA** Sat 1 June, The Glee Club, Birmingham

**ED GAMBLE** Sat 1 June, The Alexandra, Birmingham

**MARK THOMAS** Sat 1 June, Midlands Arts Centre (mac), Birmingham

**COMEDY CLUB 4 KIDS** Sat 1 June, Brewhouse Arts Centre, Burton upon Trent

**BARRY DODDS, ROGER MONKHOUSE, BRENNAN REECE & COMIC TBC** Sat 1 June, Lichfield Garrick

**FIN TAYLOR** Sat 1 June, Theatre Severn, Shrewsbury

**KANE BROWN** Sun 2 June, The Glee Club, Birmingham

**BRIAN CONLEY** Sun 2 June, The Alexandra, Birmingham

**BRIAN BUTTERFIELD** Wed 5 June, Birmingham Town Hall

**ED GAMBLE** Thurs 6 June, Victoria Hall, Stoke-on-Trent



**SCOTT BENNETT, CHRISTIAN REILLY, BEN HARRINGTON & DAVE TWENTYMAN**

Thurs 6 June, Foxlowe Arts Centre, Leek, Staffs

**JAKE LAMBERT, TROY ORCHARD, JACOB NUSSEY, DAN SMITH** Thurs 6 June, Stourbridge Town Hall

**CHRIS FORBES, DARREN HARRIOTT, BAS RAHMAN, FINLAY CHRISTIE & COMIC TBC** Fri 7 June, The Glee Club, B'ham

**RHOD GILBERT** Fri 7 June, Regent Theatre, Stoke-on-Trent

**CLINTON BAPTISTE** Fri 7 June, Crewe Lyceum

**PAUL SMITH** Fri 7 June, Aston Hall, Wrexham

**CHRIS FORBES, DARREN HARRIOTT, FINLAY CHRISTIE & COMIC TBC** Sat 8 June, The Glee Club, Birmingham

**DARREN HARRIOTT, JO ENRIGHT, PETE TECKMAN & JAMES COOK** Sat 8 June, Molineux Stadium, Wolverhampton

**JIMMY CARR** Sat 8 June, Aston Hall, Wrexham

**TOMMY SANDHU** Sun 9 June, The Glee Club, Birmingham

**CATHERINE BOHART** Sun 9 June, The Glee Club, Birmingham

**JULES O'BRIAN, IGNACIO LOPEZ, PHIL CHAPMAN & SULLY O'SULLIVAN** Sun 9 June, Theatre Severn, Shrewsbury



## Theatre

**COME FROM AWAY** Olivier & Tony award-winning musical telling the real-life story of the 7,000 air passengers from all over the world who were grounded in Canada during the wake of 9/11, until Sat 1 June, Birmingham Hippodrome

**THE BUDDHA OF SUBURBIA** Emma Rice stage adaptation of Hanif Kureishi's exploration of family, friends, sex, theatre and belonging, until Sat 1 June, Swan Theatre, Stratford-upon-Avon

**CHARLES DICKENS' THE HAUNTING** Ghost story inspired by Dickens' writing, until Sat 15 June, New Vic Theatre, Newcastle-under-Lyme

**ENGLISH** European premiere of Sanaz Toossi's Pulitzer Prize-winning play, set in a classroom in Iran where four adult students grapple with the challenge of learning English, until Sat 29 June, The Other Place, Stratford-upon-Avon

**OLIVER!** Get Your Wiggle On present an amateur version of Lionel Bart's award-winning musical, Fri 31 May - Sun 2 June, Theatre Severn, Shrewsbury

**AS YOU LIKE IT** Blue Duck Theatre Company presents its version of Shakespeare's tale of romance and mistaken identity, Sat 1 June, Midlands Arts Centre (mac), B'ham

**THE MOUSETRAP** Todd Carty stars in Agatha Christie's world-famous murder-mystery, Mon 3 - Sat 8 June, Theatre Severn, Shrewsbury

**LEGALLY BLONDE THE MUSICAL** HQPA present an amateur version of the much-loved romantic comedy, Tues 4 - Thurs 6 June, Theatre Severn, Shrewsbury

**THE 39 STEPS** Smash-hit comedy recreating John Buchan's classic spy thriller, Tues 4 - Sat 8 June, The Alexandra, Birmingham

**WISE WOMEN** Midlands-based Calathea Arts tell the stories of Margo and Margaret, two women treading the same path 375 years apart, Wed 5 June, Old Joint Stock Theatre, Birmingham

**SHREK THE MUSICAL** Trinity Players present an amateur version of the smash-hit Dreamworks film, Wed 5 - Sat 8 June, Sutton Coldfield Town Hall

**THE MERRY WIVES OF WINDSOR** Richard Goulding and Samantha Spiro star in a new production of Shakespeare's tale of mischief and double dealing, Wed 5 June - Sat 7 Sept, Royal Shakespeare Theatre, Stratford-upon-Avon

**TONES: A HIP HOP OPERA** Join Jerome, aka The Professor, as he navigates his way through Black British culture, class and belonging on a path to self-discovery, Thurs 6 - Fri 7 June,

Patrick Studio, Birmingham Hippodrome

**YES, WE'RE RELATED** Florence Lacey-Evans' 'nutty new comedy', focusing on sibling grief and chaos, Thurs 6 - Fri 7 June, Old Joint Stock Theatre, Birmingham

**MAYBE DICK** John Hower's one-man parody, based on Herman Melville's classic novel, Fri 7 June, Foxlowe Arts Centre, Leek, Staffordshire

**BABSOLUTELY FABULOUS!** Grusha's Theatre Company present a production concerning three controversial Black Country women and their mission to tell their stories. The play is written by former Birmingham Poet Laureate Adrian Johnson, Fri 7 June, Thimblewell Library, Smethwick

**SIX CHICK FLICKS** Smash-hit comedy which parodies a selection of popular chick flicks in a 'hysterical, fast-paced show', Fri 7 - Sat 8 June, Theatre Severn, Shrewsbury

**JULIUS CAESAR 2024** One of the most famous political coups in history gets the Oddsocks treatment, Sun 9 June, Tamworth Castle Grounds

## Kid's Theatre

**MADAGASCAR THE MUSICAL** CBBC star Karim Zeroual stars as King Julien in an adventure musical based on the hit DreamWorks film, Thurs 30 May - Sun 2 June, Wolverhampton Grand Theatre

**CLUB ORIGAMI** Dance, fashion and live music combine with the magic of origami as audiences embark on 'an inspiring adventure in a land made purely of paper and play', Sat 1 June, Newhampton Arts Centre, Wolverhampton

**OUT OF THE HAT** Long Nose Puppets present a show for younger audiences that tells a story of friendship and the true magic of nature, Sun 2 June, The Hub at St Mary's, Lichfield

## Light Entertainment

**CIRCUS VEGAS** All-new show featuring Wheel of Death & Globe of Speed alongside high-wire and hair-hanging acts. Acrobatic displays from Ukraine's Didyk Troupe and Tanzania's Bellagio Warriors also feature - as does Edy the Clown, until Sun 2 June, NEC, Birmingham

**BOTTOMS UP: BURLESQUE & CABARET** Enjoy sultry striptease, witty wisecracks and saucy songs as the creme de la creme of the cabaret world take to the stage to surprise and delight, Sat 1 June, Old Joint

Stock Theatre, Birmingham

**UNCANNY: I KNOW WHAT I SAW** Danny Robins hosts a live investigation into the paranormal, Sun 2 June, Birmingham Hippodrome

**KEITH BRYMER JONES LIVE** An evening with the renowned British designer and Great Pottery Thrown Down judge, Sun 2 June, Regent Theatre, Stoke-on-Trent

**BETWEEN THE COVERS LIVE** Live version of the nation's favourite TV book club, featuring Kacey Ainsworth, Jo Brand, Stephen Mangan and bestselling author Joseph O'Connor, Tues 4 June, Birmingham Town Hall

**AN EVENING WITH PSYCHIC MEDIUM CRAIG MORRIS** Tues 4 June, Prince of Wales Theatre, Cannock

**CLAIRE MARTIN & RAY GELATO'S 'A SWINGING AFFAIR'** An exploration of the Great American Songbook and its swinging duets, Wed 5 June, Lichfield Garrick

**DREAMBOYS** An immersive and seductive dance show strictly for audiences aged 18-plus, Thurs 6 June, Regent Theatre, Stoke-on-Trent

**MUSICALS BY CANDLELIGHT** Collection of musical theatre classics from productions including Rent, Avenue Q, Bonnie & Clyde and Little Shop Of Horrors... Sat 8 - Sun 9 June, Old Joint Stock Theatre, Birmingham

**AN EVENING WITH JOHN LYDON** Join the former Sex Pistols frontman as he talks about his unique and extraordinary career, Sun 9 June, Birmingham Town Hall

**THE D-DAY DARLINGS - 80TH ANNIVERSARY TOUR** Featuring new arrangements of songs from the era, slick choreography and special guest performances, Sun 9 June, Tamworth Assembly Rooms

## Talks & Spoken Word

**EMMA KENNY - THE SERIAL KILLER NEXT DOOR** One of the UK's most notable psychological therapists and crime commentators, Emma here reveals what creates a serial killer, Tues 4 June, Lichfield Garrick

**AN AUDIENCE WITH JOHN SERGEANT** Fri 7 June, Ludlow Assembly Rooms, South Shropshire

## Events

**JURASSIC GARDENS** Learn fascinating facts about dinosaurs, and snap a memorable photo, until Sun 2 June, Birmingham Botanical Gardens

**MADE IN THE BLACK COUNTRY** Celebrate Black Country people and

products, until Sun 2 June, Black Country Living Museum, Dudley

**CHARACTER WEEK** Meet your favourite kids' characters across the half-term holiday, until Sun 2 June, West Midlands Safari Park, Bewdley, Nr Kidderminster

**UK GAMES EXPO** Featuring hundreds of exhibitors showing, demonstrating and selling tabletop games of all types, until Sun 2 June, NEC, Birmingham

**MIDLANDS AIR FESTIVAL** Featuring over 100 hot-air balloons, until Sun 2 June, Ragley Hall, Warwickshire

**VICTORIAN FOOD WEEK** Watch cooking demonstrations in a special show, make sweets with the Blists Hill residents and taste samples of some 'more unusual' Victorian dishes, until Sun 2 June, Blists Hill Victorian Town, Ironbridge, Shropshire

**OH CRUMBS!** Celebrate all things biscuits, creating your own biscuit using air dry clay, until Sun 2 June, Coalport China Museum, Ironbridge, Shropshire

**MAY HALF TERM** Learn more about the incredible world of butterflies and bees, until Sun 2 June, Chirk Castle, Wrexham

**BRICK OCEAN AT THE ENGINE HOUSE** Go under the sea and discover ocean-themed brick model installations, until Sun 2 June, Severn Valley Railway, Bewdley, Nr Kidderminster

**MEDIEVAL MAYHEM** Medieval fun for all the family, until Sun 2 June, Tamworth Castle

**GIANT TOP TRUMPS TRAIL** From the most endangered species to the most elusive, explore and collect the highest-ranking cards to become the ultimate Top Trumps champion, until Sun 9 June, Twycross Zoo, Atherstone

**KNITTED BLOSSOM AND POETRY TRAIL** Admire the blossom in the gardens and the knitted blossom displays produced by talented volunteers and local craft groups, until Sun 9 June, Wightwick Manor, Wolverhampton

**THE WORLD OF PETER RABBIT - STORY TIME TRAIL** Take advantage of photo opportunities and sample a selection of fun activities as you immerse yourself in the world of Peter Rabbit, until Sun 30 June, Shrewsbury Museum & Art Gallery

**LEGO® NINJAGO®** Find your dragon power, until Sun 30 June, Legoland Discovery Centre, Birmingham

**SEAHORSE HOTEL** Check out the new seahorse area, until Sun 30 June, National SEA LIFE Centre, B'ham

**BOOTS & CATS FAMILY RAVE** A multi-generational, multi-sensory, electronic dance party, Sat 1 June, Ludlow Assembly Rooms, South Shropshire

**SHREWSBURY MODEL RAILWAY SHOW**



# Saturday 1 - Sunday 9 June

**2024 Hobbyists, families and enthusiasts** come together to celebrate the magic of model trains, Sat 1 June, St Mary's Church, Shrewsbury

**LDN WRESTLING** Featuring international wrestlers, Sat 1 June, Dudley Town Hall

**VANLIFE FESTIVAL** A festival for free spirits who enjoy vanlife and the great outdoors, Sat 1 - Sun 2 June, West Mid Showground, Shrewsbury

**ICE AGE MADNESS WITH NIGEL MARVEN** Q&A sessions with Discovery Channel's Nigel Marven, Sat 1 - Sun 2 June, Hoo Zoo & Dinosaur World, Telford

**SANDWELL CHILDREN'S FESTIVAL** This year's theme is 'wild-hood', inspiring young minds to roam free and imaginations to soar, Sat 1 - Sun 2 June, Sandwell Valley Visitor Centre, West Bromwich

**WEDDING OPEN DAY** Check out the picturesque wedding venue and all it has to offer, Sun 2 June, Trentham Estate, Staffordshire

**MAC'S ARTS MARKET** Featuring a range of stalls with a broad selection of quality handmade products, Sun 2 June, Midlands Arts Centre (mac), Birmingham

**BRITISH OPEN SQUASH CHAMPIONSHIP 2024** One of the most prestigious and historic tournaments in professional squash returns to Birmingham, Sun 2 - Sun 9 June, The Rep, Birmingham

**VICTORIAN PRINTERS EXPERIENCE DAY** Learn the art of printmaking as you design and typeset your very own poster, Wed 5 June, Blists Hill Victorian Town, Ironbridge

**BIRMINGHAM DESIGN FESTIVAL** A celebration of the local, national and international design industry, Thurs 6 - Sat 8 June, various venues across Birmingham

**TALKING TALES** Develop skills in the art of oral storytelling, Fri 7 June, Shrewsbury Museum & Art Gallery

**WOLVERHAMPTON PRIDE 2024** Celebrating the local LGBTQIA+ community, Sat 8 June, Wolverhampton City Centre

**D-DAY PARTY IN THE PARK** Featuring themed family entertainment throughout the day, Sat 8 June, Jubilee Park, Whitchurch, North Shropshire

**WELLINGTON MIDSUMMER FAYRE** Featuring stalls, performers and a costumed procession, Sat 8 June, Wellington, Shropshire

**GARDENS CINEMA: BARBIE** An outdoor screening of Barbie, set against the stunning backdrop of the Botanical Gardens, Sat 8 June, Birmingham Botanical Gardens

**ALL DAY CHAMPIONSHIP BOXING** A night of top-quality boxing presented by Doran Boxing Promotions, Sat 8

June, The Buttermarket, Shrewsbury

**THEATRE TOUR** A behind-the-scenes venue tour with knowledgeable guides, Sat 8 June, The Old Rep, Birmingham

**AI FUTURES: EXTREME ROBOTICS** Join researchers from the University of Birmingham's Extreme Robotics Lab for a family-friendly venture into the world of advanced robotics and AI, Sat 8 June, The Exchange: 3 Centenary Square, Birmingham

**FAMILY HERITAGE TOURS** An interactive exploration of The Exchange, Sat 8 June, The Exchange: 3 Centenary Square, Birmingham

**D-DAY 80TH ANNIVERSARY TEA PARTY** Enjoy an afternoon tea and be transported back to the 1940s with live music, Sat 8 June, Wem Town Hall, North Shropshire

**#BINGOHUN** The biggest, booziest bingo night is back with a bang, Sat 8 June, The Hub at St Mary's, Lichfield

**FAMILY FESTIVAL** Featuring live music, food & drinks traders and children's entertainment, Sat 8 - Sun 9 June, Uttoxeter Racecourse, Staffordshire

**DINO FUN WEEKEND** Dinosaur-themed weekend featuring shows, face painting, rides and stalls, Sat 8 - Sun 9 June, Trentham Estate, Staffordshire

**BLISTS HILL DOG SHOW** Featuring an agility course and a barking contest, with certificates for all participants and prizes for winners, Sat 8 - Sun 9 June, Blists Hill Victorian Town, Ironbridge, Shropshire

**BRITISH WILD FOOD FESTIVAL** Two-day festival dedicated to nature and wild food, Sat 8 - Sun 9 June, Hawkstone Park & Follies, Shropshire

**HEY DUGGEE VISIT** Take a heritage train ride out into the countryside to see Duggee, who will be appearing at regular intervals throughout the day at the Engine House Visitor Centre, Highley, Sat 8 - Sun 9 June, Severn Valley Railway, Bewdley, Nr Kidderminster

**A TASTE OF WESTON** Seasonal weekend full of delicious food & drink at one of the country's most exclusive country homes, Sat 8 - Sun 9 June, Weston Park, Shropshire

**BELLE VUE ARTS FESTIVAL** Inspiring week of arts events for the local community, Sat 8 - Sun 23 June, Belle Vue, Shrewsbury

**ANIMAL ENCOUNTERS** See and learn about a fascinating range of exotic animals, Sun 9 June, Eastnor Castle, Herefordshire

**ANTIQUES AND COLLECTORS FAIR** Filled with traders from across the UK selling a wide range of items from yesteryear, Sun 9 June, Himley Hall, Dudley

**OPEN FARM SUNDAY** Displays of farm machinery, animals and crops, Sun 9



RAF Cosford Air Show - Albrighton

June, Ragley Hall, Warwickshire

**SUPERHERO 5K FUN RUN AND FUN DAY**

Raising funds for Dudley NHS

Group's children's appeal, Sun 9 June, Himley Hall, Dudley

**RAF COSFORD AIR SHOW** A full day of

family fun and aircraft displays, Sun 9 June, RAF Cosford, Albrighton

**BREATHE WRESTLING** Two hours of high-flying, hard-hitting, heart-stopping action, Sun 9 June, The Buttermarket, Shrewsbury

This amateur production is presented by Music Theatre International  
All authorised performance materials are also supplied by MTI [www.mtiinc.com](http://www.mtiinc.com)

**SO TC** Shrewsbury Musical Theatre Co.

# Beautiful

## The Carole King Musical

**FEATURING THE HIT SONGS**

Happy Days Are Here Again, Will You Still Love Me Tomorrow, Up On The Roof, On Broadway, The Locomotion, One Fine Day, You've Lost That Loving Feeling, Chains, We Gotta Get Out of This Place, You've Got A Friend, (You Make Me Feel) Like A Natural Woman, I Feel The Earth Move and more...

**Thurs 13 - Sat 15 June**  
Theatre Severn, Shrewsbury  
Booking now at [theatresevern.co.uk](http://theatresevern.co.uk)



**SHREWSBURY  
FOOD  
FESTIVAL**

**29 & 30  
JUNE  
2024**

**SHREWSBURY  
QUARRY  
PARK**

**200+  
FOOD  
DRINK &  
HOMEWARE  
EXHIBITORS**

**CHEF  
SCHOOL**

**LIVE  
MUSIC  
STAGE**

**CHEF  
TALKS  
& DEMOS**

**FREE  
KIDS  
ACTIVITIES**

**...and loads  
more!**

**Get  
your  
tickets**

**SCAN ME**

**shrewsburyfoodfestival.co.uk**

**STOKE  
Rep Players**

**SAND  
CASTLES**

**A COMEDY  
BY BOB LARBEBY**

Based on an idea by Trish Larbey  
*From the writer of The Good Life*

**11 ~ 15 June 2024**

7:30pm Nightly & 2:30pm Saturday Matinee

Tickets £14-50 | Saturday Matinée £11-50  
Student/Children Concessions £10-50

**01782 209784 or  
TicketSource.co.uk**

**More info at StokeRepPlayers.co.uk**

This amateur production of 'Sand Castles' is presented by  
arrangement with Concord Theatricals Ltd on behalf of  
Samuel French Ltd [www.concordtheatricals.co.uk](http://www.concordtheatricals.co.uk)

**Stoke Repertory Theatre**  
Leek Road | Stoke-on-Trent | ST4 2TR

**TALKS  
COMEDY  
DANCE  
CARNIVAL**

**Ludlow  
Fringe  
Festival**

**KIDS  
EVENTS  
MUSIC  
THEATRE**

**13 - 23 JUNE 2024**

**LUDLOW ASSEMBLY ROOMS**

**56 whatsonlive.co.uk**



### Gigs

**DANNY MELLIN** Mon 10 June, Hare & Hounds, Birmingham

**RAQUEL RODRIGUEZ + GARETH DONKIN** Tues 11 June, Hare & Hounds, Birmingham

**ASTREL K + HOOPLA BLUE** Tues 11 June, Hare & Hounds, Birmingham

**KEBU** Tues 11 June, Castle & Falcon, Birmingham

**CHARM OF FINCHES + MIA KELLY** Tues 11 June, The Kitchen Garden, Birmingham

**RICHARD HAWLEY** Tues 11 June, The Wulfrun at The Halls, Wolverhampton

**NICK MASON'S SAUCERFUL OF SECRETS** Tues 11 June, Victoria Hall, Stoke-on-Trent

**ELLE LIMBEAR** Wed 12 June, Hare & Hounds, Birmingham

**DOJA CAT + HEMLOCKE SPRINGS** Wed 12 June, Resorts World Arena, Birmingham

**JAMES + RAZORLIGHT** Wed 12 June, Utilita Arena Birmingham

**KEITH JAMES - THE MUSIC OF CAT STEVENS** Wed 12 June, Newhampton Arts Centre, Wolverhampton

**JAMES SAYER AND HIS BAND** Wed 12 June, Morris Hall, Shrewsbury

**WHITNEY - QUEEN OF THE NIGHT** Wed 12 June, Crewe Lyceum

**VINCE STAPLES** Thurs 13 June, O2 Institute, Birmingham

**CARA LUFT** Thurs 13 June, The Kitchen Garden, Birmingham

**THE SEARCHERS** Thurs 13 June, Dudley Town Hall

**FASTLOVE - THE GEORGE MICHAEL TRIBUTE** Thurs 13 June, Octagon, Stoke-on-Trent

**HARRY STYLES TRIBUTE** Thurs 13 June, Tamworth Assembly Rooms

**THE MCCARTNEY SONGBOOK** Thurs 13 June, Lichfield Garrick

**LAUREL CANYON** Thurs

13 June, Ludlow Assembly Rooms, South Shropshire

**ALEXANDER STEWART** Fri 14 June, O2 Academy, Birmingham

**SHALAMAR** Fri 14 June, Symphony Hall, B'ham

**DESPERADO - EAGLES TRIBUTE** Fri 14 June, Stourbridge Town Hall

**1000 VOLTS OF HOLT** Fri 14 June, Dudley Town Hall

**HIGHWAY** Fri 14 June, The River Rooms, Stourbridge

**TOO MUCH TOO YOUNG** Fri 14 June, The Robin, Bilston

**BASEMENT ORPHANS + BUCKET BRIGADE + LUCIETH + EXORCISM + BOOTLACE** Fri 14 June, Newhampton Arts Centre, Wolverhampton

**TWIN LIZZY** Fri 14 June, Eleven, Stoke-on-Trent

**A BAND CALLED MALICE** Fri 14 June, Foxlowe Arts Centre, Leek, Staffs

**THE BON JOVI EXPERIENCE** Fri 14 June, Lichfield Garrick

**DON'T STOP QUEEN NOW** Fri 14 June, The Buttermarket, Shrewsbury

**DEFINITELY GALLAGHER** Fri 14 June, The Buttermarket, Shrewsbury

**TV SMITH** Fri 14 June, Albert's Shed, Shrewsbury

**SOLAR MOHICANS** Fri 14 June, Albert's Shed, Southwater, Telford

**A HEAD FULL OF COLDPLAY** Fri 14 June, Theatre On The Steps, Bridgnorth, South Shropshire

**ANNETTE GREGORY** Fri 14 June, Ludlow Assembly Rooms, South Shropshire

**CLASSICS UNPLUGGED** Fri 14 June, Methodist Church, Ludlow, South Shropshire

**TRUE ORDER** Sat 15 June, Hare & Hounds, Birmingham

**PORKPIE** Sat 15 June, O2 Academy, B'ham

**ENJOY THE SILENCE** Sat 15 June, Castle & Falcon, Birmingham

**AN AUDIENCE WITH HIGHGATE GOSPEL CHOIR** Sat 15 June, Birmingham Town Hall

**THE FATHER TEDS** Sat 15 June, The Rhodehouse, Sutton Coldfield

**THE UPBEAT BEATLES** Sat 15 June, Walsall Arena & Arts Centre

**SHOWADDYWADDY** Sat 15 June, Brierley Hill Civic, Dudley

**ABSOLUTE BENSON** Sat 15 June, Halesowen Town Hall

**MAET LIVE AND THE NEVER NEVERLAND EXPRESS** Sat 15 June, The River Rooms, Stourbridge

**CHIC TO CHIC** Sat 15 June, The Robin, Bilston

**PINK PLAYED BY VICKY JACKSON** Sat 15 June, Eleven, Stoke-on-Trent

**SIGNING OFF - UB40 TRIBUTE** Sat 15 June, The Station, Cannock

**AMINGTON BRASS BAND** Sat 15 June, The Hub at St Mary's, Lichfield

**CELINE - MY HEART WILL GO ON** Sat 15 June, Theatre Severn, Shrewsbury

**SOLAR MOHICANS** Sat 15 June, Albert's Shed, Shrewsbury

**HEAD HONCHOS** Sat 15 June, Albert's Shed, Southwater, Telford

**MANOS PUESTAS** Sat 15 June, Ludlow Brewery, South Shropshire

**ALFIE BOE** Sun 16 June, Symphony Hall, B'ham

**FLASH - TRIBUTE TO QUEEN** Sun 16 June, The Robin, Bilston

**SWINGING AT THE COTTON CLUB** Sun 16 June, Lichfield Garrick

**OLD TIME SAILORS** Sun 16 June, Theatre Severn, Shrewsbury

**JARROD DICKENSON** Sun 16 June, Morris Hall, Shrewsbury



### Classical Music

**VOCAL MUSIC FOR SUMMER** Featuring Will Smith (tenor) & Simon Bate, Tues 11 June, St Alkmunds Church, Shrewsbury

**EX CATHEDRA: SUMMER MUSIC BY CANDLELIGHT** Featuring Jeffrey Skidmore (conductor). Programme includes choral classics, a sprinkle of surprises, and some fun, Wed 12 June, Hereford Cathedral

**EX CATHEDRA: SUMMER MUSIC BY CANDLELIGHT** Featuring Jeffrey Skidmore (conductor). Programme includes works by Benjamin Britten, Charles Villiers Stanford & Liz Dilot Johnson, Thurs 13 June, St Peter's Collegiate Church, Wolverhampton

**CSO: BARBER & RACHMANINOFF** Featuring Kevin John Edusei (conductor) & Alisa Weilerstein (cello). Programme includes works by Dvořák, Barber & Rachmaninoff, Thurs 13 June, Symphony Hall, Birmingham

**EPIC BRASS** Featuring the Tredegar Town Band, Ian Porthouse, Josh Geddes, Alan Gifford (conductors), Dewi Griffiths (cornet) & Siôn Jones (euphonium). Programme includes works by Holst, E Ball, Curnow & Boëllmann, Thurs 13 June, The Bradshaw Hall, Royal Birmingham Conservatoire

**EX CATHEDRA: SUMMER MUSIC BY CANDLELIGHT** Featuring Jeffrey Skidmore (conductor). Programme includes works by Benjamin Britten, Charles Villiers Stanford & Liz Dilot Johnson, Fri 14 June, St Chad's Church, Shrewsbury

**CLASSICS UNPLUGGED** Featuring Jon Pickard (guitar). Programme comprises a fun, nostalgic selection of iconic hit songs, Fri 14 June, Ludlow Methodist Church, South Shropshire

**VIVALDI'S FOUR SEASONS BY CANDLELIGHT** Featuring the Piccadilly Sinfonietta, Katie Stillman (violin) & Warren Mailley-Smith (piano). Programme also includes Chopin's Piano Concerto No.1 in E Minor, Sat 15 June, Birmingham Cathedral

**LUDLOW FRINGE: JANE HUGHES & LUDLOW MALE VOICE CHOIR** Featuring Jane Hughes (piano). Programme includes classical and popular music, with songs from musicals, Sat 15 June, Ludlow Methodist Church, South Shropshire

**TIM SAGAR ORGAN CONCERT** Programme includes works by Guilman, Buxtehude, Baldwin, J.S. Bach & more... Sat 15 June, Victoria Hall, Stoke-on-Trent

**AN EVENING WITH THE STARS** Featuring Cory Brass Band and Charlie Green (soloist), Sat 15 June,

Dudley Town Hall

**MUCH WENLOCK MALE VOICE CHOIR** Featuring Piran Legg, Sat 15 June, Shrewsbury Abbey

**SUMMER FESTIVAL ORCHESTRA** Featuring Daniele Rosina (conductor) & Jessie Lewis (violin). Programme includes the world premiere of Oliver Beck's Heroica alongside works by Bruch & Shostakovich, Sun 16 June, Elgar Concert Hall, Bramall Music Building, University of Birmingham

### Comedy

**DEE ALLUM** Thurs 13 June, The Hub at St Mary's, Lichfield

**TROY HAWKE** Thurs 13 June, Crewe Lyceum

**CLINTON BAPTISTE** Fri 14 June, Birmingham Town Hall

**GARETH MUTCH, KEITH FARNAN, ALLYSON JUNE SMITH, MAD RON & MATT STELLINGWERF** Fri 14 June, The Glee Club, Birmingham

**MORGAN REES & SHARON WANJOHI** Fri 14 June, The Glee Club, B'ham

**TOM STADE, ROB MULHOLLAND, JONNY PELHAM & WAYNE BEESE** Fri 14 June, Castle & Falcon, Birmingham

**COMEDY IN THE MET** Fri 14 June, Stafford Gatehouse Theatre

**HARRIET DYER** Fri 14 June, Ludlow Brewery, South Shropshire



**GARETH MUTCH, KEITH FARNAN, ALLYSON JUNE SMITH & SAANIYA ABBAS** Sat 15 June, The Glee Club, Birmingham

**TOM STADE, ROB MULHOLLAND, JONNY PELHAM & WAYNE BEESE** Sat 15 June, Katie Fitzgerald's, Stourbridge

**SALLY-ANNE HAYWARD** Sat 15 June, Stourbridge Town Hall

**EMMANUEL SONUBI** Sun 16 June, The Glee Club, Birmingham

**SAANIYA ABBAS** Sun 16 June, The Glee Club, Birmingham

**WAYNE BEESE** Sun 16 June, Katie Fitzgerald's, Stourbridge

### Theatre

**CHARLIE AND THE CHOCOLATE FACTORY THE MUSICAL** BMOS presents an amateur version of the hit musical based on Roald Dahl's much-loved children's book, Tues 11 - Sat 15 June, The Alexandra, Birmingham





*Frankie Goes To Bollywood - Wolverhampton Grand Theatre*

**SAND CASTLES** Stoke Rep Players present an amateur production of Bob Larby's comic play concerning a group of beach-hut owners and their interaction with other beachgoers... Tues 11 - Sat 15 June, Stoke Repertory Theatre, Stoke-on-Trent

**FRANKIE GOES TO BOLLYWOOD** New musical inspired by real stories of British women who have been caught in the spotlight of the biggest film industry in the world, Tues 11 - Sat 15 June, Wolverhampton Grand Theatre

**THE WIZARD OF OZ** Craig Revel Horwood stars as the Wicked Witch of the West alongside Aston Merrygold as the Tin Man in a spectacular new production based on the much-loved classic, Tues 11 - Sun 16 June, Birmingham Hippodrome

**ALICE IN WONDERLAND** Amateur production presented by St Dominic's Grammar School, Wed 12 June, Arena Theatre, W'hampton

**TWELFTH NIGHT** Amateur version presented by Abbey Foregate Drama Group, Wed 12 - Sat 15 June, Shrewsbury United Reformed Church

**MUCH ADO ABOUT NOTHING** Royal Birmingham Conservatoire students present an outdoor performance of Shakespeare's romantic comedy, Wed 12 - Sun 26 June, Lightwoods Park & House, Sandwell

**WET FEET** A poignant comedy about two lives that collide in the most unlikely of places. Note that this show contains themes of a sexual nature and audience members must be aged 16+, Thurs 13 - Fri 14 June, Old Joint Stock Theatre, Birmingham

**WINDRUSH - THE JOURNEY** Pegasus Opera Company fuse music and storytelling to celebrate Black classical composers, past, present and future... Thurs 13 - Sat 15 June, Patrick Studio, Birmingham Hippodrome

**BEAUTIFUL: THE CAROLE KING MUSICAL**

Shrewsbury Musical Theatre Company tell the inspiring true story of an ordinary girl with extraordinary talent, Thurs 13 - Sat 15 June, Theatre Severn, Shrewsbury

**BEAUTY AND THE BEAST JR** Amateur version of the Disney classic, Thurs 13 - Sat 15 June, Walsall Arena

**ROMEO & JULIET** Flabbergast Theatre fuse physicality, clowning, verse, music and storytelling to present Shakespeare's tragic tale of forbidden love, Thurs 13 - Sun 23 June, Ludlow Castle, South Shropshire

**BABSOLUTELY FABULOUS!** Grusha's Theatre Company present a production concerning three controversial Black Country women and their mission to tell their stories. The play is written by former Birmingham Poet Laureate Adrian Johnson, Fri 14 June, Arena Theatre, Wolverhampton

**SUPERNATURAL SHROPSHIRE** Shropshire Drama Company present a new work of theatre which is set in a local pub and tells stories of ghosts, evil witches and even the devil himself, Fri 14 June, The Loft at The Old Post Office, Shrewsbury

**SEEN A** 'funny, honest and vibrant celebration of diverse voices, exploring unique perspectives on the world we live in'. Created and produced by leading artists with Pentabus Theatre, Fri 14 - Sat 15 June, Ludlow Assembly Rooms, South Shropshire

**KING LEAR** A 'compelling' new production in which director Vyacheslav Yehorov draws on the parallels between Ukrainian refugees in the small town of Uzhhorod in the west of the country, and the themes of Shakespeare's famous tragedy, Fri 14 - Sat 15 June, The Other Place, Stratford-upon-Avon

**ANTONY & CLEOPATRA** Stage Five Theatre tell a memorable story of

passion, jealousy, war and death, Fri 14 - Sun 16 June, Theatre Severn, Shrewsbury

**SUPERNATURAL SHROPSHIRE** Shropshire Drama Company present a new work of theatre which is set in a local pub and tells stories of ghosts, evil witches and even the devil himself, Sat 15 June, The Belfry Theatre, Wellington, Shropshire

**THE MAGIC FLUTE** New opera company Wild Arts present Mozart's surreal tale of magic and romance, Sat 15 June, Lichfield Garrick

**I FOUND MY HORN** Jonathan Guy Lewis' one-man show, which places the transformative power of music centre stage, Sat 15 June, Ludlow Assembly Rooms, South Shropshire

## Kid's Theatre

**ZOG AND THE FLYING DOCTORS** Freckle Productions present a roar-some stage version of Julia Donaldson & Axel Scheffler's much-loved book, Fri 14 - Sun 16 June, Crewe Lyceum Theatre

**DINO INVASION** Fun-filled interactive family show using animatronics to showcase life in the prehistoric era, Sat 15 June, Festival Drayton, Market Drayton, North Shropshire

**PSYCHEDELIGHT: MOHAND AND PETER** Humour and visual poetry combine in a family-friendly show celebrating Sudan and the magic of friendship across cultures, Sat 15 - Sun 16 June, Midlands Arts Centre (mac), Birmingham

**IS THAT A YETI, HETTY?** Crow's Nest Theatre present a live-illustrated storytelling show, performed at a window. A free drop-in event for families, Sat 15 - Sun 16 June, Midlands Arts Centre (mac), B'ham

## Dance

**JOSS ARNOTT DANCE: EMERGENCE TRIPLE BILL 2024** Programme includes choreographed works by Noa Zuk, Miguel Altunaga and Joss Arnett, Thurs 13 June, Arena Theatre, Wolverhampton

**JAZZ CO.** Featuring a whole new body of work crafted by leading choreographers, Thurs 13 June, Theatre Severn, Shrewsbury

## Light Entertainment

**DISNEY IN CONCERT: THE SOUND OF MAGIC** A symphonic celebration in which the renowned Novello Orchestra bring to life soundtracks and characters from the Walt Disney Animation Studios, Tues 11 June,

Symphony Hall, Birmingham

**MAGICIAN TWINPOSSIBLE** An evening of comedy magic pieces and theatrical illusions set to music, Wed 12 June, Old Joint Stock Theatre, Birmingham

**AN EVENING WITH TREVOR & GARY** That'll Be The Day's Trevor Payne & Gary Anderson take to the road to share 40 years of history through music, stories and laughter, Wed 12 June, Lichfield Garrick

**PUNT AND DENNIS: WE ARE NOT A ROBOT** Hugh Dennis and Steve Punt, back on tour for the first time in 10 years, Wed 12 June, Birmingham Town Hall

**ALL THE LOVERS: A NIGHT OF LIVE QUEER MUSIC & DANCING** An evening of live music and dance celebrating favourite independent queer music artists from across the UK - including Pink Suits, Mickey Callisto and Spit XL... Wed 12 June, Jennifer Blackwell Performance Space, Symphony Hall, Birmingham

**LIPSTICK ON YOUR COLLAR** Featuring back-to-back hits from the 1950s and 60s, Fri 14 June, Prince of Wales Theatre, Cannock

**BEYOND THE BARRICADE** Concert-style show featuring the best of musical theatre from Broadway and the West End, Fri 14 June, Tamworth Assembly Rooms

**MAGICIAN TWINPOSSIBLE** An evening of comedy magic pieces and theatrical illusions set to music, Sat 15 June, Ludlow Assembly Rooms, South Shropshire

**A NIGHT AT THE WEST END - FOR THE SHREWSBURY ARK** An evening of hits from stage and screen, headlined by West End stars Chris and Lucy Key. Jessie Hart and Erica Ann Deakin also feature. All proceeds go to Shrewsbury Ark day centre for the homeless, Sat 15 June, The Blackburn Theatre, Prestfelde School, Shrewsbury

**THE RISE** Students from JAGS Dance Academy present a variety showcase featuring dance, singing and drama, Sat 15 - Sun 16 June, Regent Theatre, Stoke-on-Trent

**SCOTTISH FALSETTO SOCK PUPPET THEATRE - POST OFFICE SCANDAL; THE MUSICAL** Hour-long show featuring songs, sketches, socks and violence, telling 'the true story of the Post Office scandal and much more', Sun 16 June, Oscars, Ludlow Assembly Rooms, South Shropshire

**KS CHITHRA: REWIND UK TOUR 2024** A soul-stirring performance paying homage to Chithra's timeless classics and new musical masterpieces. Featuring a 14-piece live orchestra and singers Madhu Balakrishnan, Nishad and Anamika, Sun 16 June, Birmingham Town Hall



## Talks & Spoken Word

**ALLIE BAILEY: RUNNING WON'T SAVE YOU** Join the ultrarunner and coach for a frank, shocking and at times darkly funny account of what it was like to be a functioning alcoholic and depressive, Mon 10 June, Theatre Severn, Shrewsbury

**MATT RENDELL'S INSIDE STORIES OF THE TOUR DE FRANCE** Join the ITV commentator as he shares stories from his 25 years covering the world's most prestigious cycling race, Tues 11 June, Newhampton Arts Centre, Wolverhampton

**POETRY SLAM** Popular contest in which brave bards take to the stage to compete for points that lead to prizes, Fri 14 June, Oscars, Ludlow Assembly Rooms, South Shropshire

## Events

**WILD ABOUT INSECTS** Explore the meadows and discover a wealth of insect life, Mon 10 June, Shropshire Hills Discovery Centre, Craven Arms, South Shropshire

**SHROPSHIRE SINGS** Bringing together children from a number of Shropshire primary schools to sing as one huge choir, Mon 10 - Wed 12 June, West Mid Showground, Shrewsbury

**A TASTE OF MID-SUMMER** Seasonally inspired tasting menu showcasing the best of Goldstone terroir, Thurs 13 June, Goldstone Hall Hotel and Gardens, Shropshire

**BBC GARDENERS' WORLD LIVE** Featuring presenters and top experts, show gardens and a floral marquee, Thurs 13 - Sun 16 June, NEC, B'ham

**BBC GOOD FOOD SHOW SUMMER** Featuring chefs and experts sharing their culinary skills and cooking live on stage, Thurs 13 - Sun 16 June, NEC, Birmingham

**LUDLOW FRINGE FESTIVAL** Another year of Shakespeare, comedy, dance, theatre, workshops, carnival and more, Thurs 13 - Sun 23 June, various locations, Ludlow, South Shropshire

**ADVENTURE CINEMA** Outdoor cinema screenings in the estate's walled garden, Fri 14 - Sun 16 June, Shugborough Estate, Staffordshire

**WESTON PARK AIR SHOW INTERNATIONAL** Back for its 27th year, attracting visitors and pilots from all the over the world, Fri 14 - Sun 16 June, Weston Park, Shropshire

**STICKY CARPET 1980S NIGHT** Back to the 1980s with DJ Lee Jennings, Sat 15 June, Ludlow Assembly Rooms, South Shropshire

**WESTON PARK FIREWORK & AERIAL**

**PYRO SPECTACULAR** Featuring the Aerosparx Display Team, who combine formation aerobatics with night-time pyrotechnics, Sat 15 June, Weston Park, Shropshire

**SCOTT MILLS GOES POP RACENIGHT** An evening of jump racing followed by a DJ set from Scott Mills and special guest Gareth Gates, Sat 15 June, Uttoxeter Racecourse, Staffordshire

**BONGO'S BINGO COUNTRY SPECIAL** The original bingo rave sensation, Sat 15 June, The Buttermarket, Shrewsbury

**MIXED TRACTION & REAL ALE FESTIVAL** Serving up to 20 real ales alongside a busy service of steam and diesel trains, Sat 15 - Sun 16 June, Severn Valley Railway, Bewdley, Nr Kidderminster

**COMIC CON MIDLANDS 2024** Special event for fans of movies, TV, streaming, gaming, anime and sports entertainment, Sat 15 - Sun 16 June, Telford International Centre, Shrops

**FAMILY FESTIVAL** Featuring live music, food & drinks traders and children's entertainment, Sat 15 - Sun 16 June, Wolverhampton Racecourse

**BLISTS HILL SPORTS WEEKEND** Demonstrate your sporting prowess in numerous games, including a sack race and an egg & spoon race, Sat 15 - Sun 16 June, Blists Hill Victorian Town, Ironbridge, Shropshire

**ANIMECON UK** A showcase of the best in Asian pop culture, Sat 15 - Sun 16 June, NEC, Birmingham

**NATIONAL CYCLING SHOW** Popular show bringing together industry experts to educate, inspire and motivate, Sat 15 - Sun 16 June, NEC, Birmingham

**EUROS 2024: ENGLAND V SERBIA** Live on the big screen, Sun 16 June, Victoria Hall, Stoke-on-Trent

**FATHER'S DAY LUNCH** Treat Dad and your loved ones to a premium Sunday lunch, Sun 16 June, Severn Valley Railway, Bewdley, Nr Kidderminster

**EUROS: ENGLAND V SERBIA** Live on the giant screen, Sun 16 June, The Buttermarket, Shrewsbury

## Festivals

**NOCTURNE LIVE AT BLENHEIM PALACE** Line-up includes Crowded House, Turin Brakes, Sheryl Crow, Wed 12 - Sun 16 June, Blenheim Palace, Oxfordshire

**BEARDY FOLK FESTIVAL** Line-up includes Blair Dunlop, Kate Rusby, Mad Dog Mcree, Thurs 13 - Sun 16 June, Hopton Court, Cleobury Mortimer, Shropshire

**DOWNLOAD FESTIVAL** Line-up includes Queens Of The Stone Age, Fall Out Boy, Avenged Sevenfold, Fri 14 - Sun 16 June, Donington Park, Derby



## Beautiful: The Carole King Musical

Theatre Severn, Shrewsbury, Thurs 13 - Sat 15 June

Presented by Shrewsbury Musical Theatre Company, Beautiful pays tribute to the life and music of legendary singer-songwriter Carole King.

Featured numbers include You Make Me Feel Like A Natural Woman, Take Good Care Of My Baby, You've Got A Friend, So Far Away, It Might As Well Rain Until September, Up On The Roof and Locomotion.







*Bat For Lashes - Birmingham Town Hall*

## Gigs

**MARTIN THOMAS AND ROSIE GREEN** Mon 17 June, Ludlow Assembly Rooms, South Shropshire

**CRYPTA** Tues 18 June, The Asylum, B'ham

**BAT FOR LASHES** Tues 18 June, Birmingham Town Hall

**NICK MASON'S SAUCERFUL OF SECRETS** Tues 18 June, Symphony Hall, B'ham

**RUMOURS OF FLEETWOOD MAC** Tues 18 June, Wolverhampton Grand Theatre

**GIRLS ALOUD** Tues 18 - Thurs 20 June, Resorts World Arena, B'ham

**PATRI LINEALS + THE SKUM** Wed 19 June, The Sunflower Lounge, Birmingham

**BIG TIME RUSH** Wed 19 June, O2 Academy, Birmingham

**DEBORAH ROSE** Wed 19 June, Ludlow Assembly Rooms, South Shropshire

**PRESS GANGERS + THE LOWER DECKERS** Wed 19 June, Ludlow Brewery, South Shropshire

**LOUIS DUNFORD** Thurs 20 June, Hare & Hounds, Birmingham

**LIMEHOUSE LIZZY** Thurs 20 June, Foxlowe Arts Centre, Leek, Staffs

**WHAT'S LOVE GOT TO DO WITH IT? - TINA TURNER TRIBUTE** Thurs 20 June, The Prince Of Wales Theatre, Cannock

**THE UPBEAT BEATLES** Thurs 20 June, Lichfield Garrick

**THE REMI HARRIS HOT CLUB TRIO** Thurs 20 June, Ludlow Brewery, South Shropshire

**LUKE COMBS UK** Thurs 20 June, Crewe Lyceum

**LIZZIE AND THE BANSHEES** Fri 21 June, Castle & Falcon, Birmingham

**THIRD CULTURE COLLECTIVE X ASHNA** Fri 21 June, Mama Roux's, Birmingham

**THE ROLLING CLONES** Fri 21 June, Sutton Coldfield Town Hall

**ERASURED** Fri 21 June, The Rhodhouse, Sutton Coldfield

**THE ONE LOVE** Fri 21 June, The River Rooms, Stourbridge

**DEFINITELY MIGHTBE + ADORED** Fri 21 June, The Robin, Bilston

**THE NINETYTEN** Fri 21 June, KK Steel Mill, Wolverhampton

**SACK SABBATH** Fri 21 June, Eleven, Stoke-on-Trent

**AMERICAN FOUR TOPS** Fri 21 June, The Prince Of Wales Theatre, Cannock

**AUDIORAGE + NIRVARNA** Fri 21 June, The Station, Cannock

**I'M EVERY WHITNEY** Fri 21 June, The Buttermarket, Shrewsbury

**GREY WOLF** Fri 21 June, Ludlow Assembly Rooms, South Shropshire

**TROY REDFERN** Sat 22 June, The Asylum, Birmingham

**KINGS OF LEON + THE VACCINES** Sat 22 June, Utilita Arena B'ham

**ALL 4 INDIE VS BRITPOP UNITED** Sat 22 June, The Rhodhouse, Sutton Coldfield

**MICHAEL JACKSON THE LEGACY - STARRING CJ** Sat 22 June, Brierley Hill Civic, Dudley

**THE DECADES BAND** Sat 22 June, The River Rooms, Stourbridge

**SOUL'D OUT UK** Sat 22 June, The Robin, Bilston

**THE MAGIC OF MOTOWN** Sat 22 June, Wolverhampton Grand Theatre

**ULTIMATE COLDPLAY** Sat 22 June, Eleven, Stoke-on-Trent

**ELIZA CARTHY** Sat 22 June, New Vic Theatre, Newcastle-under-Lyme

**DON'T STOP BELIEVIN'** Sat 22 June, The Prince Of Wales Theatre, Cannock

**ULTIMATE LEPPARD** Sat 22 June, The Station, Cannock

**2 RUDE** Sat 22 June, The Hub at St Mary's, Lichfield

**SHROPSHIRE SKA FEST WITH THE SUPERSKAS** Sat 22 June, The Buttermarket, Shrewsbury

**GEOFF ROBB** Sat 22 June, Ludlow Assembly Rooms, South Shropshire

**IAN STONE** Sat 22 June, Oscar's, Ludlow, South Shropshire

## Classical Music

**THOMAS TROTTER ORGAN CONCERT**

Mon 17 June, Birmingham Town Hall

**EX CATHEDRA: SUMMER MUSIC BY**

**CANDLELIGHT** Featuring Jeffrey Skidmore (conductor). Programme includes works by Benjamin Britten, Charles Villiers Stanford & Liz Dilot Johnson, Tues 18 June, St Paul's Church, Jewellery Quarter, B'ham

**GALA ORGAN CONCERT** Featuring Peter Dyke (organ). Programme includes works by J.S. Bach, Hollins, S.S.Wesley & more... Tues 18 June, Hereford Cathedral

**SHREWSBURY SCHOOL ENSEMBLES** Tues 18 June, St Alkmunds Church, Shrewsbury

**LUDLOW FRINGE: GEORGE CAIRD OBOE QUARTET** Featuring Simon Blendis (violin), Douglas Paterson (viola) & Jane Salmon (cello). Programme includes works by Mozart, Britten, Moeran & Beethoven, Wed 19 June, Ludlow Assembly Rooms, South Shropshire

**CBSO: MENDELSSOHN'S ITALIAN SYMPHONY** Featuring Olari Elts (conductor) & Ariel Lanyi (piano). Programme includes works by Farrenc, Mozart, Schubert & Mendelssohn, Wed 19 June, Symphony Hall, Birmingham

**AN EVENING WITH ANNA LAPWOOD** Featuring Anna Lapwood (organ). Programme includes works by H Zimmer, Glass, Menken, Debussy, Rani & O Belli, Thurs 20 June, Birmingham Town Hall

**STAFFORD SINFONIA: OUT OF THE DARKNESS** Featuring Jack Lovell-Huckle (music director) & Bocheng Wang (piano). Programme includes works by Mayer, Greig & Beethoven, Sat 22 June, Rising Brook Community Church, Staffordshire

**KEELE CHAPEL SINGERS: SUMMER CONCERT** Featuring Peter de Cruz (conductor) & David Ballantyne (piano). Programme includes sacred and secular music, Sat 22 June, Keele University Chapel, Staffs

**NORTH STAFFORDSHIRE SYMPHONY ORCHESTRA: SUMMER CONCERT** Featuring Juan Ortuño (conductor) & Sophie Rosa (soloist). Programme includes works by Bruckner, Bruch & Brahms, Sat 22 June, St. John Fisher Catholic College, Newcastle-under-Lyme, Staffordshire

**BIRMINGHAM CONTEMPORARY MUSIC GROUP: NOH REIMAGINED** Featuring BCMG musicians exploring traditional Japanese Noh Theatre. Programme includes new works by Ben Nobuto & Hollie Harding, plus works by Toshio Hosokawa & Misato Mochizuki, Sun 23 June, CBSO Centre, Birmingham

## Comedy

**JUSTIN MOORHOUSE, ESHAAN AKBAR & CONNOR BURNS** Wed 19 June, Morris Hall, Shrewsbury

**COMEDY CAROUSEL WITH ANDY ROBINSON, CONNOR BURNS & STEVE WILLIAMS** Thurs 20 June, The Glee Club, Birmingham

**JOE MCTERNAN** Thurs 20 June, The Glee Club, Birmingham

**RICH HALL** Thurs 20 June, New Vic Theatre, Newcastle-under-Lyme



**STEVE BUGEJA** Fri 21 June, The Glee Club, Birmingham

**ALFIE MOORE** Fri 21 June, New Vic Theatre, Newcastle-under-Lyme

**DREW TAYLOR** Fri 21 June, Ludlow Assembly Rooms, South Shropshire



**JOE MCTERNAN, ABIGOLIAH SCHAMAUN, CONNOR BURNS & STEVE WILLIAMS** Fri 21 - Sat 22 June, The Glee Club, Birmingham

**BILAL ZAFAR** Sat 22 June, The Glee Club, Birmingham

**TONY HAWKS** Sat 22 June, Ludlow Assembly Rooms, South Shropshire

**IAN STONE** Sat 22 June, Oscar's, Ludlow, South Shropshire

**HARUN MASHO'D** Sat 22 June, Oscar's, Ludlow, South Shropshire

## Theatre

**THE MASSIVE TRAGEDY OF MADAME BOVARY** Ha Hum Ah Productions and the Minack Theatre offer a fresh take on Gustave Flaubert's complex novel. Note that the production contains strong language and mature themes, Mon 17 - Tues 18 June, Lichfield Garrick

**THE GOOD LIFE** The Nonentities Society present a stage version of the much-loved 1970s TV sitcom, Mon 17 - Sat 22 June, The Rose Theatre, Kidderminster

**THE TROUBLE WITH TEENS** Drama Tees present a brand-new devised tale about school life at its worst, Tues 18 - Wed 19 June, Lichfield Garrick

**SIX** Award-winning musical in which



the wives of Henry VIII take to the mic to tell their tales, remixing 500 years of historical heartbreak into an 80-minute celebration of 21st-century girl power, Tues 18 - Sat 22 June, Birmingham Hippodrome

**THE SYNDICATE** Kay Mellor comedy-drama following the change in fortune of five supermarket employees. Samantha Giles (Emmerdale) and Brooke Vincent (Coronation Street) star. Gaynor Faye directs, Tues 18 - Sat 22 June, Theatre Severn, Shrewsbury

**KYOTO** Fast-paced political thriller which places audiences right at the heart of the historic 1997 Kyoto climate summit, Tues 18 June - Sat 13 July, Swan Theatre, Stratford-upon-Avon

**AUSTEN'S WOMEN: LADY SUSAN** Rebecca Vaughan's latest one-woman show, based on Jane Austen's 1794 novella, Wed 19 June, Theatre Severn, Shrewsbury

**BEAUTY AND THE BEAST** Chapterhouse Theatre Company's brand-new version of the classic fairytale, performed outdoors, Wed 19 June, Powis Castle and Gardens, Welshpool, Powys

**TRUNCBULL** Central Youth Theatre present a new play that provides a fresh perspective on the classic Roald Dahl story Matilda, Wed 19 - Fri 21 June, Newhampton Arts Centre, Wolverhampton

**PIRATES OF THE STOUR** Side by Side Theatre Company fuse drama, music and dance in a seafaring adventure, Wed 19 - Sat 22 June, Stourbridge Town Hall

**SHAKESPEARE IN THE PARK: THE COMEDY OF ERRORS** Wed 19 - Sat 22 June, Maple Hayes Hall, Lichfield

**THE PRINCESS AND THE PEA** Acrobatics, clowning and fairytale adventures combine in a 'funny and playful remix' of Hans Christian Andersen's classic story, Wed 19 - Sat 29 June, New Vic Theatre, Newcastle-under-Lyme

**RHYMES AGAINST HUMANITY** Improvised musical, totally ad-libbed with prompts from the audience, Thurs 20 June, Old Joint Stock Theatre, Birmingham

**AGGIE** One-woman show based on the autobiography of Dame Agnes Hunt, the co-founder of Gobowen's Orthopaedic Hospital and Derwen College, Thurs 20 June, Studio Two, Ludlow Assembly Rooms, South Shropshire

**THE STRANGE CASE OF DR JEKYLL AND MR HYDE** Mark Stratford's one-man show brings Robert Louis Stevenson's gothic tale to life using storytelling and 'powerful character creation', Thurs 20 June, Oscars, Ludlow Assembly Rooms, South Shropshire

**THE ADDAMS FAMILY** St Dominic's Grammar School presents an amateur version of the kooky musical, Thurs 20 - Fri 21 June, Arena Theatre, Wolverhampton

**QUEEN LEAR** Royal Birmingham Conservatoire present Shakespeare's timeless story of pride, cruelty, power and love, Thurs 20 - Sat 22 June, The Crescent Theatre, Birmingham

**THE VICAR OF DIBLEY** Mow Cop Players present an amateur stage version of the much-loved TV series, Thurs 20 - Sat 22 June, Mitchell Arts Centre, Hanley, Stoke-on-Trent

**SUPERNATURAL SHROPSHIRE** Shropshire Drama Company present a new work of theatre which is set in a local pub and tells stories of ghosts, evil witches and even the devil himself, Fri 21 June, Montgomery Town Hall, Powys

**SEVEN AGES** Kepow Theatre Company fuse comedy, drama and pathos in a production exploring life and meaning, Fri 21 June, Glasshouse Arts Centre, Stourbridge

**MACREADY! DICKENS' THEATRICAL FRIEND** A 'compelling' show telling the story of the great Victorian actor-manager Macready - the man to whom Charles Dickens dedicated Nicholas Nickleby, Fri 21 June, Oscars, Ludlow Assembly Rooms, South Shropshire

**TWELFTH NIGHT: A CORNISH TALE** Seann Walsh, Natalie Anderson (Emmerdale/Fool Me Once) & BAFTA winner Molly Windsor (Traces) star in a new production of Shakespeare's much-loved comedy, Fri 21 June - Sun 7 July, Stafford Gatehouse Theatre

**LA FILLE MAL GARDÉE** A ballet pantomime fusing clog dancing, humour and chickens... Sat 22 June, The Brewhouse Arts Centre, Burton upon Trent

**SUPERNATURAL SHROPSHIRE** Shropshire Drama Company present a new work of theatre which is set in a local pub and tells stories of ghosts, evil witches and even the devil himself, Sat 22 June, Wem Town Hall, North Shropshire

**BEAUTY AND THE BEAST** Chapterhouse Theatre Company's brand-new stage version of the classic fairytale, performed outdoors, Sat 22 June, National Trust Erdigg Hall, Nr Wrexham

**WISE WOMEN** Midlands-based Calathea Arts tell the stories of Margo and Margaret, two women treading the same path 375 years apart, Sat 22 June, outdoor performance at St Leonard's Churchyard, Corve Street, Ludlow, South Shropshire

**JUDY & LIZA MUSICAL** The turbulent tale of two of Hollywood's biggest stars - Judy Garland and her daughter, Liza Minnelli - set against

the backdrop of their infamous 1964 London Palladium concert, Sat 22 June, Theatre Severn, Shrewsbury

**THE SAILING ACADEMY** An interactive show in which children are players in the plot. A sister production to the theatre's summer show, Twelfth Night: A Cornish Tale, Sat 22 June - Sun 7 July, Stafford Gatehouse Theatre

**MRS KAPOOR'S DAUGHTER'S WEDDING 2 MAURITIUS** A British Asian comedy featuring singing, dancing and dhol... Sun 23 June, The Alexandra, Birmingham

## Kids Theatre

**LAIKA THE SPACE DOG** Lori Hopkins' story for children about an ordinary dog who went on an extraordinary journey into space, Sat 22 June, Wednesbury Library

**A DRAGON'S TALE** Theatrix Arts fuse puppetry, music and sound effects to tell a magical story based on the legend of the Lambton Worm. Suitable for children aged four-plus, Sat 22 June, Ludlow Assembly Rooms, South Shropshire

## Dance

**ECHOES - MI FLAMENCO** An evocative multimedia production featuring engaging filmic imagery, flamenco dance, music and vocals, Fri 21 June, Theatre Severn, Shrewsbury

**BLACK BRITISH BALLET: ISLAND MOVEMENTS** Epic tale of a Windrush family that focuses on the story of a young soldier in World War Two, Sat 22 June, Birmingham Hippodrome

## Light Entertainment

**THANKS FOR THE MEMORIES** Neil Sands' brand-new matinee show, packed with musical memories from the 'fabulous 40s' through to the 'sensational 70s', Tues 18 June, The Brewhouse Arts Centre, Burton upon Trent

**CLOSURE?** One-act comedy performance lecture following Lydia De La Murrá on a journey of self-discovery, Wed 19 June, Old Joint Stock Theatre, Birmingham

**JAMES B PARTRIDGE: PRIMARY SCHOOL ASSEMBLY BANGERS LIVE** Join singing teacher and TV regular James for an evening of pure nostalgia as he takes audiences back in time via some joyous singalong tunes from primary-school days, Thurs 20 June, Stafford Gatehouse Theatre

**JOHN FINNEMORE, AMONG OTHER** The writer and star of BBC Radio Four's

Cabin Pressure presents an evening of sketches and monologues from the past nine series of his popular sketch show, Thurs 20 June, Ludlow Assembly Rooms, South Shropshire

**KATHERINE AND PIERRE: A KATY PERRY DRAG MUSICAL** Lip-sync, mime, acrobatics and choreography come together in TalkSmall's genre-defying production 'that plays out the highs and lows of a relationship in a way you've never seen before', Fri 21 June, Old Joint Stock Theatre, Birmingham

**LEA SALONGA - STAGE, SCREEN & EVERYTHING IN BETWEEN** Featuring stage & screen classics from Lea's best-known roles in Miss Saigon, Les Misérables, Aladdin, Mulan and more... Fri 21 June, Wolverhampton Grand Theatre



**THE D-DAY DARLINGS - 80TH ANNIVERSARY TOUR** Featuring new arrangements of songs from the era, slick choreography and special guest performances, Fri 21 June, Halesowen Town Hall

**RAT PACK LIVE** Featuring all-time favourites including New York, New York, That's Amore, My Way, Mr Bojangles and That's Life, Fri 21 June, Lichfield Garrick

**G4 20TH ANNIVERSARY** Sat 22 June, Walsall Arena

**SAMARPAN MAHOTSAV: A CELEBRATION OF INDIAN CLASSICAL DANCE AND LIVE MUSIC** Curated by Jaivant Patel Company and featuring performances by British South Asian artists and musicians, Sat 22 June, Arena Theatre, Wolverhampton

**UK PROMS IN THE PARK** Featuring the UK Proms Orchestra and special guests, Sat 22 June, Attingham Park, Shrewsbury

**CIRCUS RAJ** 'Awe-inspiring' show featuring a cast of aerialists, acrobats, musicians, slack-rope walkers, dancers and puppeteers, Sat 23 June, Ludlow Assembly Rooms, South Shropshire

**G4 20TH ANNIVERSARY** Sun 23 June, Theatre Severn, Shrewsbury

**THE REAL KEN DODD, THE MAN I LOVED** Exclusive documentary film revealing the private man behind the comic genius, Sun 23 June, Theatre Severn, Shrewsbury



### Talks & Spoken Word

**JAN RAVENS IN CONVERSATION** Alistair McGowan chats to the female impressionist about the importance of satire... Mon 17 June, Ludlow Assembly Rooms, South Shropshire

**AN EVENING WITH SIR GEOFF HURST** Friend and agent Terry Baker interviews England's 1966 World Cup hero, Wed 19 June, Lichfield Garrick

**ARE YOU SITTING COMFORTABLY?** Broadcasters Charlotte Green and Garry Richardson 'share hilarious stories taking you behind the scenes of the wonderful world of radio', Fri 21 June, Ludlow Assembly Rooms, South Shropshire

**GABY ROSLIN IN CONVERSATION** Alistair McGowan chats to the BBC presenter about her career and her new book, Spread The Joy, Fri 21 June, Ludlow Assembly Rooms, South Shropshire

**JO BRAND IN CONVERSATION** Alistair McGowan chats to the comedian about her incredible career, Sat 22 June, Ludlow Assembly Rooms, South Shropshire

**TALES FOR A MIDSUMMER** Join professional storyteller Maria Credali for an evening of folklore and fairytale for adult audiences, Mon 24 June, Tamworth Assembly Rooms

**BEASTS OF THE BATTLEFIELD: ANIMAL IMAGERY IN THE STAFFORDSHIRE HOARD** A talk with Charlotte Bull & friends, Wed 26 June, Bilston Town Hall

**ON THE EDGE** Poetry from Moorlanders Pamela Brough and Roger Elkin, and Cheshire's Joy Winkler, Wed 26 June, Foxlowe Arts Centre, Leek, Staffs

### Events

**ZOO HISTORY & TECTON WALK & TALK** Discover Dudley Zoo & Castle's rich history through this unique guided tour, which will focus on the zoo's early years and the construction of its 12 listed Tecton buildings, Wed 19 June, Dudley Zoo & Castle

**EUROS: ENGLAND V DENMARK** Live on the giant screen, Thurs 20 June, The Buttermarket, Shrewsbury

**FASHION THROUGH THE AGES** Exploration of the history of fashion via displays and a catwalk show, Fri 21 - Sat 22 June, Enginuity, Ironbridge, Shropshire

**SOUL REVOLUTION FESTIVAL** Combining holistic health, world music and self-expression, Fri 21 - Sun 23 June, Weston Park, Shropshire

**BIRTHDAY BBQ AND NATURE FUN DAY** Celebrating 10 years of running the centre as a local charity, Sat 22 June, Shropshire Hills Discovery Centre, Craven Arms, South Shropshire

**DENNY VS CASH** A night of championship boxing, Sat 22 June, Resorts World Arena, Birmingham

**DISCOS FOR GROWN UPS** Playing 1970s disco, 80s pop and 90s dancefloor classics, Sat 22 June, Dudley Town Hall

**ORIENTAL EXPRESS** A Chinese-inspired dining experience on the Severn Valley Railway, Sat 22 June, Severn Valley Railway, Bewdley, Nr Kidderminster

**SUMMERTIME SANTA** See Santa as he visits his furry and feathered friends whilst enjoying a bit of a summer break, Sat 22 June, Hoo Zoo & Dinosaur World, Telford

**HUG: FOXLOWE'S GREEN ARTS FESTIVAL** The fourth HuG Green Arts Festival, organised jointly with Moorlands Climate Action, Sat 22 June, Foxlowe

Arts Centre, Leek

**GIN TRAINS** Gin-tasting session combined with a leisurely ride along the railway, Sat 22 - Sun 23 June, Severn Valley Railway, Bewdley, Nr Kidderminster

**CIRCUS RAJ** Presenting the best of India's performers, Sun 23 June, Ludlow Assembly Rooms, South Shropshire

**CLASSIC TRANSPORT DAY** Travel back in time to enjoy the sights and sounds of classic cars, lorries, buses, motorcycles, traction engines and Land Rovers, Sun 23 June, Telford Steam Railway, Shropshire

**KNOTTY HERITAGE TRAIN** Enjoy a unique heritage train ride through the Staffordshire countryside, Sun 23 June, Foxfield Railway, Staffordshire

### Festivals

**PARKLANDS FESTIVAL** Multi-genre festival including house, drum and bass, techo and more - with more than 60 acts programmed over the weekend, Sat 22 - Sun 23 June, Telford Town Park QEII Arena, Shropshire



*Free Event*

Hosted By 

Talks & Workshops - Kids Area (The Kin Tent) - Cacao Bar - Yoga - Water Therapy - Healing - Card Readings - Jewellery - Crystals - Witchy Wares - Meditation - Food - Massage - Aromatherapy - Plus much more!!

**Saturday 27th July - 10am - 4.30pm**  
**In the Quarry, Shrewsbury**

[www.mamascottagemushrooms.org](http://www.mamascottagemushrooms.org)

The most established Holistic Health and Wellbeing event in Shropshire hosted by  
**Mama's Cottage Mushrooms**





Budapest Café Orchestra - Theatre Severn, Shrewsbury

## Gigs

**ORA COGAN + MICHAEL B. THOMAS** Mon 24 June, Hare & Hounds, Birmingham

**TMDISTANT + YAOUNDEBOXINGCLUB** Tues 25 June, The Sunflower Lounge, Birmingham

**UNDEROATH** Tues 25 June, O2 Institute, Birmingham

**GLADYS KNIGHT** Tues 25 June, Symphony Hall, Birmingham

**KIM GORDON** Wed 26 June, O2 Institute, Birmingham

**SOUL TRAIN** Wed 26 June, Tamworth Assembly Rooms

**UB40 - THE LEGACY** Wed 26 June, Lichfield Garrick

**AYNSLEY LISTER** Thurs 27 June, Hare & Hounds, Birmingham

**BUDAPEST CAFÉ ORCHESTRA** Thurs 27 June, Theatre Severn, Shrewsbury

**THE SIMON & GARFUNKEL STORY** Thurs 27 June, Theatre Severn, Shrewsbury

**TONY MC MANUS AND JULIA TOASPERN** Thurs 27 June, Ludlow

Assembly Rooms, South Shropshire

**BLOC PARTY** Fri 28 June, O2 Institute, B'ham

**MATTHEW HALSALL** Fri 28 June, The Crossing, Digbeth, Birmingham

**TROYE SIVAN + JODIE HARSH** Fri 28 June, Utilita Arena B'ham

**SUPERSONIC QUEEN** Fri 28 June, The Rhodehouse, Sutton Coldfield

**ULTIMATE MADNEZZ** Fri 28 June, 45Live, Kidderminster

**JERSEY BEATS - OH WHAT A NITE!** Fri 28 June, Brierley Hill Civic, Dudley

**BACK 2 THE OLDSKOOL** Fri 28 June, The River Rooms, Stourbridge

**SANCTUM SANCTORIUM** Fri 28 June, The Robin, Bilston

**THE SMYTHS** Fri 28 June, The Sugarmill, Stoke-on-Trent

**ULTIMATE NIGHT AT THE DISCO** Fri 28 June, Eleven, Stoke-on-Trent

**ROY ORBISON PROJECT** Fri 28 June, Two Gates Club, Tamworth

**AIRTIGHT 80S** Fri 28 June, The Station, Cannock

**GROUP LISTENING + BAZMATRON** Fri 28 June, Unitarian Church, Shrewsbury

**NIRVANAH** Fri 28 June, The Buttermarket, Shrewsbury

**PARTY101** Sat 29 June, O2 Academy, B'ham

**ICONIC 80S V 90S** Sat 29 June, The River Rooms, Stourbridge

**SKIDS** Sat 29 June, The Robin, Bilston

**ROVING CROWS** Sat 29 June, Katie Fitzgerald's, Stourbridge

**IVO NEAME'S DODEKA** Sat 29 June, Newhampton Arts Centre, W'hampton

**AMY'S WINEHOUSE & THE EMPTY CELLARS BAND** Sat 29 June, Eleven, Stoke-on-Trent

**SANCTUM SANCTORIUM** Sat 29 June, Foxlowe Arts Centre, Leek, Staffs

**TALON** Sat 29 June, Tamworth Assembly Rooms

**FLEETWOOD MAD** Sat 29 June, The Station, Cannock

**CHAKA - THE MUSIC OF CHAKA KHAN** Sat 29 June, Theatre Severn, Shrewsbury

**MOSTLY AUTUMN** Sun 30 June, The Robin, Bilston

**NATHANIEL RATELIFF AND THE NIGHT SWEATS** Sun 30 June, The Wulfrun at The Halls, Wolverhampton

**TEN** Sun 30 June, Eleven, Stoke-on-Trent

**A COUNTRY NIGHT IN NASHVILLE** Sun 30 June, The Buttermarket, Shrewsbury

## Classical Music

**VICTOR MASLOV PIANO RECITAL** Programme includes works by Haydn, Janacek & Rachmaninov, Tues 25 June, St Alkmunds Church, Shrewsbury

**PAUL CARR ORGAN CONCERT** Programme includes works by J.S. Bach, Handel, Gárdonyi, Saint-Saëns & more... Sat 29 June, St Benedict's Church, Wombourne

**CBSO: MADAM BUTTERFLY** Featuring Kazuki Yamada (conductor), Thomas Henderson (director), Maki Mori (Cio-Cio San), Pene Pati (Pinkerton) Christopher Purves (Sharpless) & the CBSO Chorus. Programme comprises Puccini's Madam Butterfly, Sat 29 June, Symphony Hall, Birmingham

**KEELE BACH CHOIR: RACHMANINOFF'S ALL-NIGHT VIGIL** Programme comprises Rachmaninoff's Vespers, Sat 29 June, Keele University Chapel, Staffordshire

**SHREWSBURY FESTIVAL CHORUS - ELGAR: THE DREAM OF GERONTIUS** Featuring Kate Trethewey, Will Smith, Peter Edge (soloists) & Anthony Coupe (conductor), Sat 29 June, Shrewsbury Abbey

**STAFFORD SINFONIA: SUMMER SYMPHONY CONCERT** Featuring Jack Lovell-Huckle (music director). Programme includes works by Mayer, Greig & Beethoven, Sun 30 June, Holy Trinity Church, Eccleshall, Staffordshire

**MARCHES CHOIR: BIZET'S CARMEN** Directed by Alistair Auld, Sun 30 June, Walcot Hall, Lydbury North, Shropshire

**PICTURES AT AN EXHIBITION** Featuring Nikita Luknov (piano) & Jeremy Lund (commentary). Programme comprises works by Mussorgsky, Sun 30 June, St Alkmunds Church, Shrewsbury

## Comedy

**VIGGO VENN** Wed 26 June, Theatre Severn, Shrewsbury

**ANGELOS EPITHEMIU** Thurs 27 June, Foxlowe Arts Centre, Leek, Staffs

**GAVIN WEBSTER, ELF LYONS, DAVE FULTON, BRUCE DEVLIN & MAGS MCHUGH** Fri 28 June, The Glee Club, Birmingham

**PAUL SMITH** Fri 28 June, Regent Theatre, Stoke-on-Trent

**KIRI PRITCHARD MACLEAN & COMICS TBC** Fri 28 June, Katie Fitzgerald's, Stourbridge

**TROY HAWKE** Sat 29 June, Birmingham Town Hall

**GAVIN WEBSTER, ELF LYONS, DAVE**

**FULTON & BRUCE DEVLIN** Sat 29 June, The Glee Club, Birmingham

**JIMMY CARR** Sat 29 June, Stourbridge Town Hall

**ADAM BEARDSMORE, JULES O'BRIAN, RICHARD DADD, MASAI GRAHAM, RACHEL BAKER, MATT BRAGG & TAL DAVIES** Sun 30 June, The Glee Club, Birmingham

## Theatre

**THE SYNDICATE** Kay Mellor comedy-drama following the change in fortune of five supermarket employees. Samantha Giles (Emmerdale) and Brooke Vincent (Coronation Street) star. Gaynor Faye directs, Tues 25 - Sat 29 June, The Alexandra, Birmingham

**CALAMITY JANE** Amateur version of the famous Wild West musical, Tues 25 - Sat 29 June, Sutton Coldfield Town Hall

**THE MOUSETRAP** Todd Carty and Gwyneth Strong star in Agatha Christie's world-famous murder mystery, Tues 25 - Sat 29 June, Wolverhampton Grand Theatre

**SHAKESPEARE IN LOVE** Little Theatre Company present an amateur stage version of the Marc Norman & Tom Stoppard-written Oscar-winning film, Tues 25 - Sat 29 June, The Brewhouse Arts Centre, Burton upon Trent

**HAMILTON** Lin-Manuel Miranda's multi-award-winning musical tells the story of America's Founding Father, Alexander Hamilton, Tues 25 June - Sat 31 Aug, Birmingham Hippodrome

**THE WAITING ROOM** Moon Kim's 'eccentric and surreal piece' uses 'physicality, dreamy words and a strange song about watermelons' to explore relationships and attachment, Wed 26 June, Old Joint Stock Theatre, Birmingham

**AN EXPERIMENT WITH AN AIR PUMP**

Studio 61 present an amateur version of Shelagh Stephenson's play, which is set in a house in Newcastle-upon-Tyne and flits between 1799 and 1999, Wed 26 - Fri 28 June, Newhampton Arts Centre, Wolverhampton

**MADE IN DAGENHAM THE MUSICAL** Five Towns Theatre present an amateur stage version of the film of the same name, telling the story of the famous 1968 strike at the Ford Dagenham car plant which saw female workers walk out in protest against sexual discrimination, Wed 26 - Sat 29 June, Stoke Repertory Theatre

**THE IMPORTANCE OF BEING... EARNEST?** Say It Again, Sorry? present an unpredictable twist on Oscar Wilde's comedy classic, Thurs 27 - Sat 29 June, Lichfield Garrick



Ten - Eleven, Stoke-on-Trent



# forest live

CANNOCK CHASE FOREST

Staffordshire

**ANNE-MARIE**

Thursday 27 June

**THE CHARLATANS  
+ JOHNNY MARR**

With special guest **Gaz Coombes**

Friday 28 June

**OLLY MURS**

Support from **Daniel Bedingfield**

Saturday 29 June

**forestlive.com**

Buying tickets from Forestry  
England helps to grow and  
protect our nation's forests.

We plant over  
**7 million**  
trees  
in England  
each year



Forestry England

In partnership with:

**LIVE NATION**

**CUFFE & TAYLOR**



**BUGSY MALONE** Kidderminster Operatic & Dramatic Youth Section present an amateur stage version of Alan Parker's hit film, Thurs 27 - Sat 29 June, The Rose Theatre, Kidderminster

**GUYS AND DOLLS** Seasons Theatre Company present an amateur version of Frank Loesser's musical fable of Broadway, Thurs 27 - Sat 29 June, Prince of Wales Theatre, Cannock

**THE SOUND OF MUSIC** Ludwig Theatre Arts Adult & Youth Company present an amateur version of Rodgers & Hammerstein's much-loved musical, Thurs 27 - Sat 29 June, Ludlow Assembly Rooms, South Shropshire

**ROMEO AND JULIET** Illyria presents an outdoor staging of the world's greatest love story, Fri 28 June, Winterbourne House & Garden, University of Birmingham

**MATILDA JR.** All Round Theatre School (A.R.T.S) present an amateur production based on Roald Dahl's much-loved children's book, Sun 30 June, Tamworth Assembly Rooms

## Dance

**NADIYA AND KAI: BEHIND THE MAGIC** Brand-new show in which the Strictly couple invite audiences into their world, sharing their personal journeys through the world of dance, Mon 24 June, Symphony Hall, Birmingham

## Light Entertainment

**CIRQUE: THE GREATEST SHOW** Variety spectacular combining West End and Broadway hits with aerialists, contortionists, fire jugglers and feats of agility and flair, Mon 24 - Tues 25 June, Theatre Severn, Shrewsbury

**LA VOIX - THE RED AMBITION TOUR** Music and comedy combine as 'Britain's funniest red head' returns to the stage with a brand-new show, Thurs 27 June, Crewe Lyceum Theatre

**SING SING SING** Tenth anniversary concert by Little Voices Choir & friends, Thurs 27 - Sat 29 June, Festival Drayton, Market Drayton, North Shropshire

**LOVE HURTS** Brand-new show featuring a 'powerhouse cast' of singers, dancers and live band, Fri 28 June, Theatre Severn, Shrewsbury

**A MUSICAL VOYAGE WITH BILLY SPAKEMON** Charity event in aid of Brain Tumour Research and featuring Lutley Community Voices, Sat 29 June, Halesowen Town Hall

**LOOKING FOR ME FRIEND: THE MUSIC OF VICTORIA WOOD** Whistle-stop tour through some of Victoria Wood's

best-loved songs, Sat 29 June, Thimblemill Library, Smethwick

**BEYOND BROADWAY** Featuring hits from West End and Broadway musicals, with guest performances by West End stars, Sun 30 June, The Alexandra, Birmingham

**G4 20TH ANNIVERSARY** Sun 30 June, Victoria Hall, Stoke-on-Trent

## Talks & Spoken Word

**TALES FOR A MIDSUMMER** Join professional storyteller Maria Credali for an evening of folklore and fairytale for adult audiences, Mon 24 June, Tamworth Assembly Rooms

**BEASTS OF THE BATTLEFIELD: ANIMAL IMAGERY IN THE STAFFORDSHIRE HOARD** A talk with Charlotte Bull & friends, Wed 26 June, Bilston Town Hall

**ON THE EDGE** Poetry from Moorlanders Pamela Brough and Roger Elkin, and Cheshire's Joy Winkler, Wed 26 June, Foxlowe Arts Centre, Leek, Staffs

## Events

**EUROS: ENGLAND V SLOVENIA** Live on the giant screen, Tues 25 June, The Buttermarket, Shrewsbury

**SUMMER CANVAS PAINTING WORKSHOP** Join artist Jenni Stone for this relaxing painting & prosecco evening, Wed 26 June, The Hub at St Mary's, Lichfield

**UNDER 5S TEDDY BEARS PICNIC PARTY** The annual under-fives day is back with plenty of family entertainment, Wed 26 - Thurs 27 June, Dudley Zoo & Castle

**VICTORIAN BLACKSMITH EXPERIENCE DAY** Pull on some gloves, pick up a hammer and feel the heat of the furnace, Thurs 27 - Fri 28 June, Blists Hill Victorian Town, Ironbridge

**UNDER 5S DAY** Featuring the famous Himley beach and visits from Bluey and Bingo, Fri 28 June, Himley Hall, Dudley

**SILENT DISCO** Dance the night away against the backdrop of the legendary Spitfire, Fri 28 June, The Potteries Museum & Art Gallery, Stoke-on-Trent

**LOVE CHEESE LIVE** One of the UK's largest cheese, food and drink festivals, Fri 28 - Sat 29 June, Staffordshire County Showground, Stafford

**ECCLESHALL FESTIVAL & STREET MARKET** A day of fun, food and entertainment for the whole family, Sat 29 June, Eccleshall, Stafford

**KEELE DAY 2024** A 'free and fun-filled day out' for all the family as part of Keele University's 75th anniversary



Hamilton - Birmingham Hippodrome

celebrations, Sat 29 June, Keele University campus, Staffordshire

**1960S EVENING** Enjoy 1960s music, see vintage vehicles, check out 60s fashion trends, and dance the night away with some of the decade's most famous characters, Sat 29 June, Black Country Living Museum, Dudley

**NETBALL SUPER LEAGUE GRAND FINAL 2024** The top four teams from the UK's elite domestic netball competition come together for one final day to decide the placings for the season, Sat 29 June, Resorts World Arena, Birmingham

**SUMMER FOOD FAIR** Featuring food from small businesses across Wrexham and surrounding areas, Sat 29 June, Alyn Waters Country Park, Wrexham

**BIRMINGHAM RUM FESTIVAL A** celebration of the finest rums from around the world, Sat 29 June, The Cuban Embassy, Moseley, B'ham

**TAKE OFF FLIGHT BUSKING** Find out which wing shape keeps your paper plane in the air the longest, and which files the furthest, Sat 29 June, Thinktank Birmingham Science Museum

**STEP BACK TO THE 1940S BIG BAND SATURDAY NIGHT SHOW** Hosted by the 20-piece Kalamazoo Dance Band alongside special guests, Sat 29 June, Severn Valley Railway, Bewdley, Nr Kidderminster

**STEAMPUNK WEEKEND** Featuring elaborate costumes on parade, traders selling accessories and clothing, live entertainment and fascinating exhibits, Sat 29 - Sun 30 June, Blists Hill Victorian Town, Ironbridge

**STEP BACK TO THE 1940S** Step back in time as you travel by heritage steam train to each station, Sat 29 - Sun 30 June, Severn Valley Railway, Bewdley, Nr Kidderminster

**ARMED FORCES WEEKEND** Marking Armed Forces Day with a range of interactive family activities, Sat 29 -

Sun 30 June, National Memorial Arboretum, Staffordshire

**SHREWSBURY FOOD FESTIVAL 2024** Bringing together independent food producers, quality street-food vendors, top chefs, local brewers, and distillers, Sat 29 - Sun 30 June, The Quarry Park, Shrewsbury



**SANDWELL COURTYARD FAIR** Meet the local makers, sellers and crafts people of Sandwell, Sat 29 - Sun 30 June, Sandwell Valley Visitor Centre, West Bromwich

**DUCK HERDING** Duck-herding displays, complete with audience participation, Sun 30 June, Eastnor Caste, Herefordshire

**THE BET365 SUMMER CUP 2024** Day of live horse racing, plus plenty of entertainment to keep the kids busy, Sun 30 June, Uttoxeter Racecourse, Staffordshire

**ARMED FORCES DAY 2024** A day dedicated to those serving in the Armed Forces, Sun 30 June, Himley Hall, Dudley

**SUPERHERO FAMILY FUN DAY** Action-packed day of superhero-themed activities, Sun 30 June, Wolverhampton Racecourse

## Festivals

**UPTON JAZZ FESTIVAL** Line-up includes Panama Quartet, Dave Bronwing's Jazzcats, ArtDeco Hot Jazz Orchestra, Fri 28 - Sun 30 June, various venues in Upton-upon-Severn, Worcestershire



## Competitions

## WIN! with What's On...

Enter now at [whatsonlive.co.uk](http://whatsonlive.co.uk) to be in with a chance of bagging one of these fabulous prizes!



### Win! A family ticket to see Peppa Pig's Fun Day Out!

Packed full of singing and dancing (and muddy puddles!), Peppa Pig's Fun Day Out guarantees giggles and snorts for all Peppa fans - *and* provides a perfect introduction to theatre for your little ones. We have a family ticket (4 tickets) to give away for this oinktastic stage show when it stops off at The Alexandra, Birmingham, on Wednesday 31 July.

**Competition closes Friday 19 July**



### Win! Two adult weekend camping tickets to this summer's Shrewsbury Folk Festival!

Shrewsbury Folk Festival returns late summer (West Mid Showground, Friday 23 - Monday 26 August) with four days of folk, Americana, blues and world music.

We are offering one reader the chance to win two adult weekend camping tickets for this year's get-together.

**Competition closes Monday 5 August**



### Win! Two tickets to see Girls Aloud in concert!

Celebrating 22 years since their Popstars: The Rivals win, Girls Aloud have come together for a huge arena tour. The eagerly anticipated shows will feature all of the band's greatest hits, including the chart-topping Sound Of The Underground, The Promise and I'll Stand By You... We have two tickets to give away to see the girls perform at Birmingham's Resorts World Arena on Thursday 20 June.

**Competition closes Friday 14 June**



### Win! Two tickets to see 101 Dalmatians: The Musical!

Telling the story of fashionista Cruella de Vil's wicked attempts to swipe all the Dalmatian puppies in town and create a fabulous fur coat for herself, this hit musical visits the region direct from London's West End and stars Kym Marsh as Cruella.

We have two tickets to give away for the show when it stops off at The Alexandra, Birmingham, on Tuesday 2 July.

**Competition closes Friday 21 June**

For your chance to WIN! with What's On, visit:  
**[whatsonlive.co.uk](http://whatsonlive.co.uk)**



# LIVE EVENTS IN SHREWSBURY

JUNE/JULY/AUG 2024

## THE BUTTERMARKE SHREWSBURY



**LONDON CALLING**  
play  
**THE CLASH**  
'GIVE 'EM ENOUGH ROPE'  
45th Anniversary Tour

**FRI 7 JUNE**

THE DEFINITIVE TRIBUTE TO  
**QUEEN**

★★★★★  
"ATMOSPHERE WAS EXPLOSIVE!"  
JAM SERVICES  
Official Queen Biographer

★★★★★  
"SOUNDS JUST LIKE FREDDIE!"  
ADAM LAURENT  
Queen & Adam Lambert

WHY RE-JAUNTING THE UK BY STORM  
DON'T STOP  
**QUEEN**  
NOW

**FRI 14 JUNE**

**I'M EVERY WHITNEY**  
STARRING KIESHIA CHUN & HER MILLION DOLLAR LIVE BAND

★★★★★  
"OUTSTANDING"  
"PERFECT VOCALS"

**FRI 21 JUNE**

**SKA**  
Outdoor Festival  
LIVE ON STAGE!  
**THE SUPERSKAS**

**SAT 22 JUNE**

**NIRVANAH**

**FRI 28 JUNE**

*A Country Night in*  
**NASHVILLE**  
STARRING DOMINIC WALPIN & THE HURRICANES

**SUN 30 JUNE**

THE UK'S No.1 TRIBUTE TO THE ARCTIC MONKEYS  
**ANTARCTIC MONKEYS**

**FRI 5 JULY**

**The Jam**

**FRIDAY 12 JULY**

**FRIDAY 19 JULY**  
**THE RONALDOS**  
SUMMER FIESTA

**THE DEVOUT**  
**FRI 19 JULY**

GREATEST HITS SHOW  
**DEPECHE MODE**  
Europe's Leading Depeche Mode Tribute Band

**TRIBUTE**

**STEVE HUGHES**

**SAT 20 JULY**

**FRIDAY 26 JULY**  
**JUST RADIOHEAD**

THE UK'S DEFINITIVE TRIBUTE TO RADIOHEAD

BRAND NEW FOR 2024  
**MORGAN WALLEN**  
SUN 28 JULY

TRIBUTE UK

Entertainment or Death Tour 2024  
**MOTLEY CRUE**  
KISS THE SEX MACHINE GUNS

**2 AUG**

OUTSTANDING  
**DESPERADOS**  
FRIDAY 9 AUGUST  
CELEBRATING THE MUSIC & LEGACY OF THE EAGLES

THE ULTIMATE GIRLS NIGHT OUT  
**FORBIDDEN PLEASURE**  
THE MALE REVUE SHOW  
FRIDAY 16 AUGUST

**HARRY STYLES**  
THE OUTDOOR Party  
SAT 17 AUG

FEATURING A LIVE PERFORMANCE FROM 'HARRY STYLED'

**TOTAL REX**  
T-REX TRIBUTE  
SUN 18 AUG

CELEBRATING THE MUSIC OF AMY WINEHOUSE  
**AMY**  
a Tribute  
BACK TO BLACK TOUR  
FRI 23 AUG

**SUN 25 AUG**  
CELEBRATING THE MUSIC OF  
**KENNY ROGERS**  
STARRING PETER WHITE  
PLUS:  
RYAN EVANS TOM BYRNE

THE WORLD'S GREATEST CELEBRATION AND TRIBUTE TO THE LIFE & WORK OF NEIL DIAMOND.  
**Hello Again**  
THE NEIL DIAMOND SONGBOOK  
FRI 30 AUG

"A spellbinding recreation of a Neil Diamond Concert" - NOTTINGHAM POST  
"Absolutely mesmerising" - SAT TV

**FAULTY TOWERS**  
Original  
the Dining Experience  
SUN 08 SEPT  
SUN 10 NOV

IN THE NAME OF LOVE  
THE  
**DIANA ROSS**  
STORY  
12 SEPT

**MAGGIE MAY**  
THE ROD STEWART YEARS  
13 SEPT



THU 18 JULY, DOOR @ 5.30PM

THE MUSIC OF  
**HANS ZIMMER**  
vs  
**JOHN WILLIAMS**

HARRY POTTER • JURASSIC PARK • STAR WARS  
PIRATES OF THE CARIBBEAN • TOP GUN  
THE DARK KNIGHT RISES • BATMAN BEGINS  
GLADIATOR • SUPERMAN • INDIANA JONES  
THE LION KING • INTERSTELLAR • E.T.



SAT 20 JULY, DOOR @ 5.30PM

MINISTRY OF SOUND  
CLASSICAL

PLUS SPECIAL GUESTS  
SIGMA  
FREEMASONS (RUSSELL SMALL)

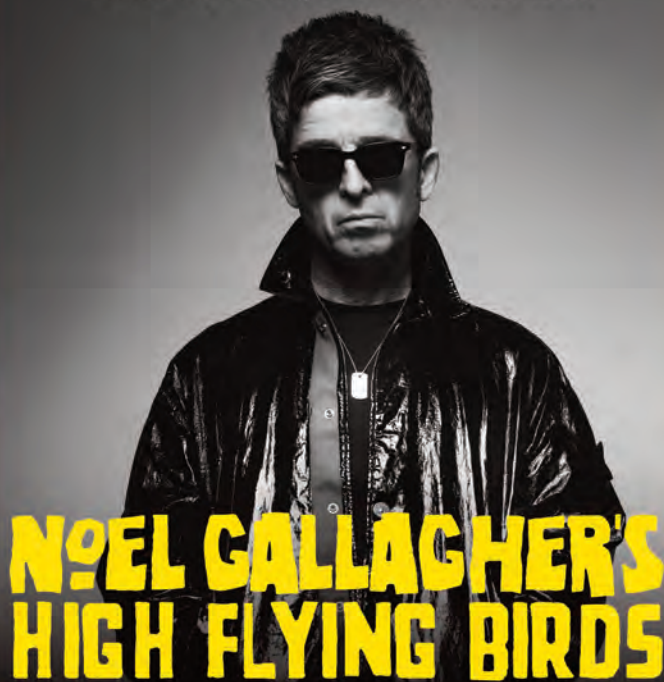


FRI 19 JULY, DOOR @ 5.30PM



PLUS SPECIAL GUESTS  
THE HOOSIERS  
ELVANA

SUN 21 JULY, DOOR @ 5.30PM



PLUS SPECIAL GUESTS  
JOHNNY MARR  
The WAEVE (Graham Coxon & Rose Elinor Dougall)

**WARWICK CASTLE**

[warwickcastlelive.co.uk](http://warwickcastlelive.co.uk)

